

**Legend**

	Cabinet and Verts		Copper Joint		Trough Duct Cable Tray		Signal Box		FTN Core Node		Screen Joint Routeworks		Manhole details: Cross-To be used Filled-In use Clear-Empty		Overbridge		Signal		Engineer's Line Reference		Crossing		Gas Line		HV Cable		LV Cable		Sewer		Telecoms		Water		Copper Blue Fibre Red Screen Green		Mast
	Cabinet with Regenerator and Verts		Fibre Joint		Electrical Control Room		Manhole		Core Node with GSM-R Colocated		Copper Joint Routeworks		Tunnel		Underbridge		Vehicle Access Point		Mile Post		Gantry		Gas		HV		LV		Sewer		Telecoms		Water		Copper Blue Fibre Red Screen Green		Mast
	Screening Conductor Joint with/without Earth		1985m Cable - Type Identified by FTN Code Status - as per Key Below		Manhole		Mid Length Sheath Gap Fibre		FTN Access Node		Cabinet Routeworks		Tunnel		Underbridge		Pedestrian Access Point		Platform		Gantry		Gas		HV		LV		Sewer		Telecoms		Water		Copper Blue Fibre Red Screen Green		Mast
<b>KEY</b>	Proposed Fibre & Civils Elements are shown in RED	All Existing Elements are shown in BLACK			Existing Fibre Cable		Existing Copper Cable		Existing Screen Cable		Manhole		Tunnel		Underbridge		Pedestrian Access Point		Platform		Gantry		Gas		HV		LV		Sewer		Telecoms		Water		Copper Blue Fibre Red Screen Green		Mast

**Notes**

AB1	17/01/2011	As-Built Drawing	EZ	BW	CT
A	13/08/2008	First Issue	MT	DH	SW
Rev	Date	Description of Revisions	Drawn	Chkd	Appr

Contractor(s)

Status: **As-Built**

Scale(s): NTS

ELR & Mileage: BML2 & BLP

Designed	Egle Zabolkiene	Sign.		Date	17/01/2011
Drawn	Egle Zabolkiene	Sign.		Date	17/01/2011
Checked	Ben Winter	Sign.		Date	20/01/2011
Approved	Chris Tappenden	Sign.		Date	21/01/2011

Project: **WP 17-02 As-Built**

Drawing Title: **Lymington (1123) to Brockenhurst SB (BROS)**

FTN/GSM-R Project  
Tournament House  
Paxford  
London  
W2 1HA

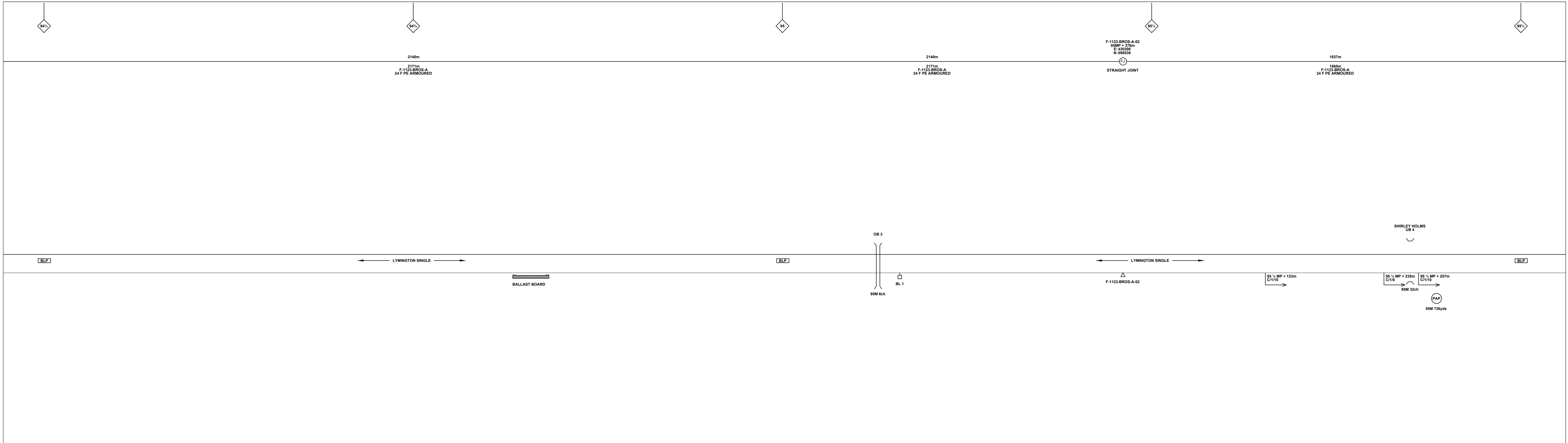
Alternative Reference: See Layout Tab A3 Sheets 3 and 4

Drawing Number: **NTPO\SLD\1123\BROS\AB1**

Sheet: **2 of 6**

Revision: **AB1**

Sheet Size 841x297



**Legend**

	Cabinet and Verts		Copper Joint		Trough Duct Cable Tray		Signal Box		FTN Core Node		Screen Joint Routeworks		Manhole details: Cross-To be used Filled-In use Clear-Empty		Overbridge		Signal		MLNT		Engineer's Line Reference				
	Cabinet with Regenerator and Verts		Fibre Joint		Electrical Control Room		Manhole		Core Node with GSM-R Colocated		Copper Joint Routeworks		Tunnel		Underbridge		VAP Access Point		Mile Post		Platform				
<b>KEY</b>	<b>Proposed Fibre &amp; Civils Elements are shown in RED</b>	<b>All Existing Elements are shown in BLACK</b>	<b>Existing Fibre Cable</b>	<b>Existing Copper Cable</b>	<b>Existing Screen Cable</b>		Mid Length Sheath Gap Fibre		FTN Access Node		Cabinet Routeworks		Sheath Gap Copper		Earth Farm		Buffer Stop		Telephone		Crossing				
	<b>Proposed Copper Elements are shown in BLUE</b>						Gantry		FTN Access Node with GSM-R Colocated		Cable Pull		Gas Line		HV Cable		LV Cable		Sewer		Telecoms		Water		Mast

Notes

AB1	17/01/2011	As-Built Drawing	EZ	BW	CT
A	13/08/2008	First Issue	MT	DH	SW
Rev	Date	Description of Revisions	Drawn	Chkd	Appr

Contractor(s)

Status: **As-Built**

Scale(s): NTS

ELR & Mileage: BML2 & BLP

Designed	Egle Zabolkiene	Sign.		Date	17/01/2011
Drawn	Egle Zabolkiene	Sign.		Date	17/01/2011
Checked	Ben Winter	Sign.		Date	20/01/2011
Approved	Chris Tappenden	Sign.		Date	21/01/2011

Project: **WP 17-02 As-Built**

Drawing Title: **Lymington (1123) to Brockenhurst SB (BROS)**

FTN/GSM-R Project  
Tournament House  
Paxford  
London  
W2 1HA

Alternative Reference: See Layout Tab A3 Sheets 5 and 6

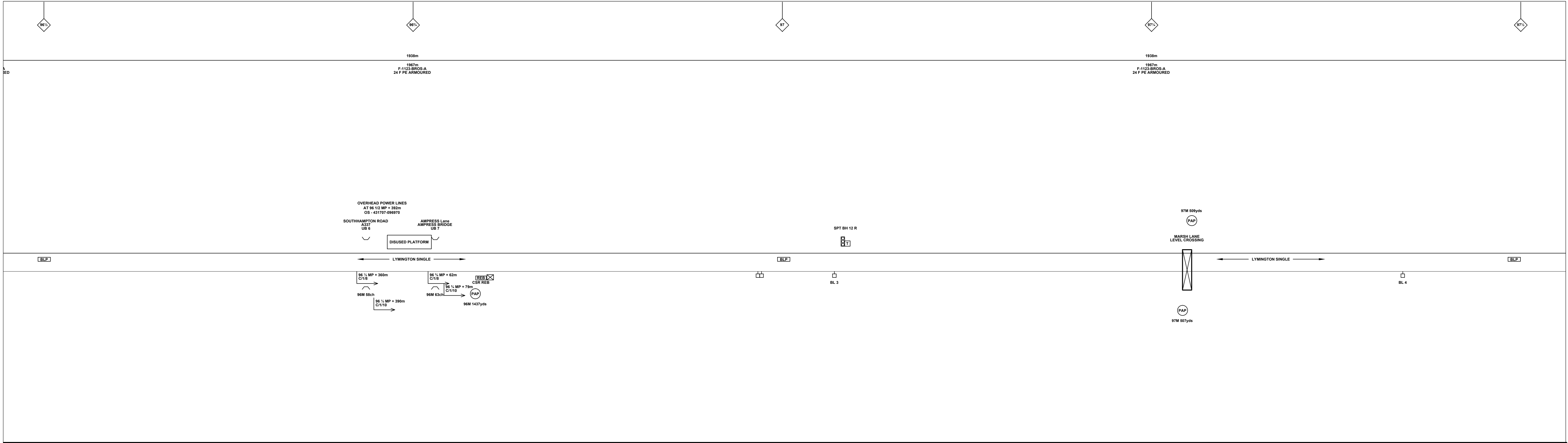
Drawing Number: **NTPO\SLD\1123\BROS\AB1**

Revision: **AB1**

Sheet: **3 of 6**

Sheet Size 841x297





**Legend**

	Cabinet and Verts		Copper Joint		Trough Duct Cable Tray		Signal Box		FTN Core Node		Screen Joint Routeworks		Manhole details: Cross-To be used Filled-In use Clear-Empty		Overbridge		Signal		MLNT		Engineer's Line Reference
	Cabinet with Regenerator and Verts		Fibre Joint		Electrical Control Room		Core Node with GSM-R Colocated		Copper Joint Routeworks		Mid Length Sheath Gap Fibre		Manhole		Underbridge		Vehicle Access Point		Mile Post		Platform
	Screening Conductor Joint with/without Earth		Cable - Type Identified by FTN Code Status - as per Key Below		Manhole		FTN Access Node		Cabinet Routeworks		Sheath Gap Fibre		Tunnel		Earth Farm		Pedestrian Access Point		Telephone		Crossing
	<b>KEY</b> Proposed Fibre & Civils Elements are shown in RED Proposed Copper Elements are shown in BLUE Proposed Screening Elements are shown in MAGENTA All Recoveries are shown in GREEN		All Existing Elements are shown in BLACK		Existing Fibre Cable		Existing Copper Cable		Existing Screen Cable		Gas Line		HV Cable		LV Cable		Sewer		Telecoms		Water

**Notes**

AB1	17/01/2011	As-Built Drawing	EZ	BW	CT
A	13/08/2008	First Issue	MT	DH	SW
Rev	Date	Description of Revisions	Drawn	Chkd	Appr

Contractor(s)

Status: **As-Built**

Scale(s): NTS

ELR & Mileage: BML2 & BLP

Designed	Egle Zabolkiene	Sign.		Date	17/01/2011
Drawn	Egle Zabolkiene	Sign.		Date	17/01/2011
Checked	Ben Winter	Sign.		Date	20/01/2011
Approved	Chris Tappenden	Sign.		Date	21/01/2011

Project: **WP 17-02 As-Built**

Drawing Title: **Lymington (1123) to Brockenhurst SB (BROS)**

FTN/GSM-R Project  
Tournament House  
Paxford  
London  
WC2 1HX

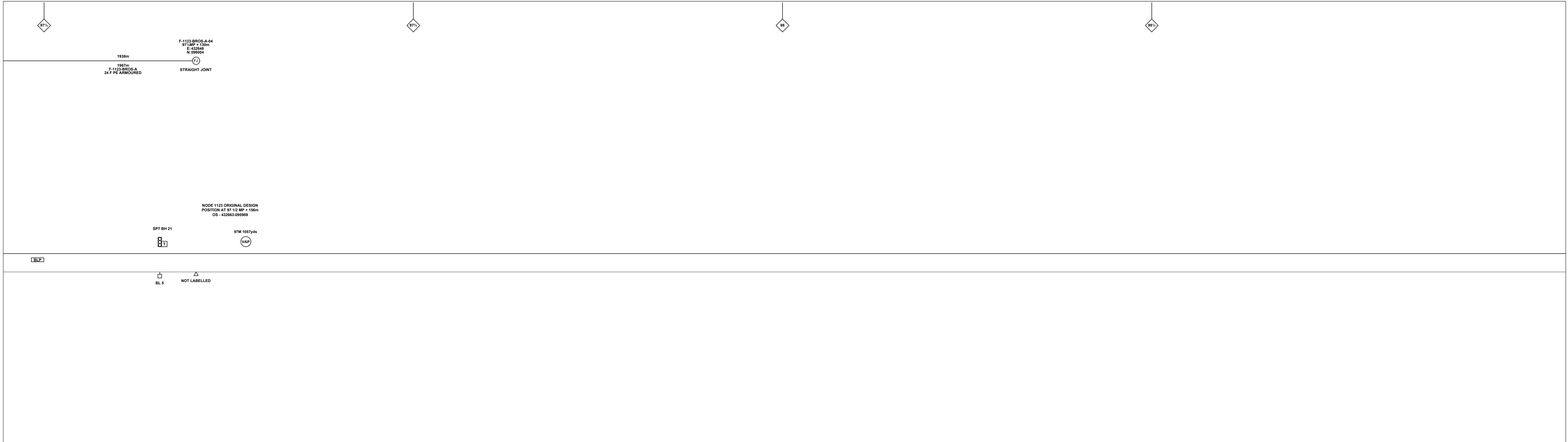
Alternative Reference: See Layout Tab A3 Sheets 9 and 10

Drawing Number: **NTPO\SLD\1123\BROS\AB1**

Sheet: **5 of 6**

Revision: **AB1**

Sheet Size 841x297



**Legend**

	Cabinet and Verts		Copper Joint		Trough Duct Cable Tray		Signal Box		FTN Core Node		Screen Joint Routeworks		Manhole details: Cross-To be used Filled-In use Clear-Empty		Overbridge		Signal		MLNT	Engineer's Line Reference		Crossing		GAS	Gas Line		HV	HV Cable		LV	LV Cable		SEW	Sewer		TEL	Telecoms		v	Water		Cable Pull		Mast
	Cabinet with Regenerator and Verts		Fibre Joint		Electrical Control Room		Manhole		Core Node with GSM-R Colocated		Copper Joint Routeworks		Tunnel		Underbridge		VAP	Vehicle Access Point		Mile Post		Gantry		Copper Blue Fibre		Screen Green		Fibre Red		Fibre Green		Platform		T	Telephone		Earth Farm		Buffer Stop		T	Telephone		Mast

**KEY**

Proposed Fibre & Civils Elements are shown in RED  
 Proposed Copper Elements are shown in BLUE  
 Proposed Screening Elements are shown in MAGENTA  
 All Recoveries are shown in GREEN

All Existing Elements are shown in BLACK  
 Existing Fibre Cable  
 Existing Copper Cable  
 Existing Screen Cable

Notes

AB1	17/01/2011	As-Built Drawing	EZ	BW	CT
A	13/08/2008	First Issue	MT	DH	SW
Rev	Date	Description of Revisions	Drawn	Chkd	Appr

Contractor(s)

Status: **As-Built**

Scale(s): NTS

ELR & Mileage: BML2 & BLP

Designed	Egle Zabolkiene	Sign.		Date	17/01/2011
Drawn	Egle Zabolkiene	Sign.		Date	17/01/2011
Checked	Ben Winter	Sign.		Date	20/01/2011
Approved	Chris Tappenden	Sign.		Date	21/01/2011
Project	WP 17-02 As-Built				
Drawing Title	Lymington (1123) to Brockenhurst SB (BROS)				

FTN/GSM-R Project  
 Tournament House  
 Paddington  
 London  
 W2 1HQ

Alternative Reference: See Layout Tab A3 Sheet 11

Drawing Number: NTPO\SLD\1123\BROS\AB1

Revision: AB1

Sheet: 6 of 6