

Andy Bone 22-10-12
 Andy Bone 22-10-12
 Dave Peakman 22-10-12
 Prakash Patel (CRE) 22-10-12

AS-BUILT

St. Denys (1130)
 Woolston Station (1131)

See Layout Tab A3 Sheets 1 and 2
 NTPO\SLD\1130\1131\001 1 3
 AB4

Legend

Cabinet and Verts	Copper Joint	Trough Duct Cable Tray	Signal Box	FTN Core Node	Screen Joint Routeworks	Manhole details: Cross-To be used Filled-In use Clear-Empty	Overbridge	Signal	MLNI	Engineer's Line Reference	Crossing	Gas Line
Cabinet with Regenerator and Verts	Fibre Joint	Cable - Type Identified by FTN Code Status - as per Key Below	Electrical Control Room	Core Node with GSM-R Colocated	Copper Joint Routeworks	Manhole	Underbridge	Vehicle Access Point	Mile Post	Gantry	HV Cable	HV Cable
KEY Proposed Fibre & Civils Elements are shown in RED Proposed Copper Elements are shown in BLUE Proposed Screening Elements are shown in MAGENTA All Recoveries are shown in GREEN	Screening Conductor Joint with/without Earth	Manhole	Mid Length Sheath Gap Fibre	FTN Access Node	Cabinet Routeworks	Sheath Gap Copper	Platform	Pedestrian Access Point	Telephone	Cable Pull	Sewer	Water
	Existing Fibre Cable	Existing Copper Cable	Existing Screen Cable	FTN Access Node with GSM-R Colocated	Fibre Joint Routeworks	Tunnel	Earth Farm	Buffer Stop	Mast			

Notes

A	08-01-2013	Amended by NWR to incorporate final Stage 2 detail	PT	PB	GH
AB4	22-10-12	Spur Cables Added to Drawing, AS-BUILT	AB	DP	PP
AB3	23/08/11	FJ 02 & 03 Amended, Electronic Signatures Added, AS-BUILT	AB	DP	PP
AB2	16/08/10	CCTV additional cable arrangements shown, AS-BUILT	AB	DP	PP
AB1	23/04/10	AS-BUILT Issue	AB	DP	PP
DA	16/09/08	1st Issue	JO	MT	SW
Rev	Date	Description of Revisions	Drawn	Chkd	Appr

Contractor(s)

As Built

ELR & Mileage
 BML1 & SDP1

Scale(s)
 NTS

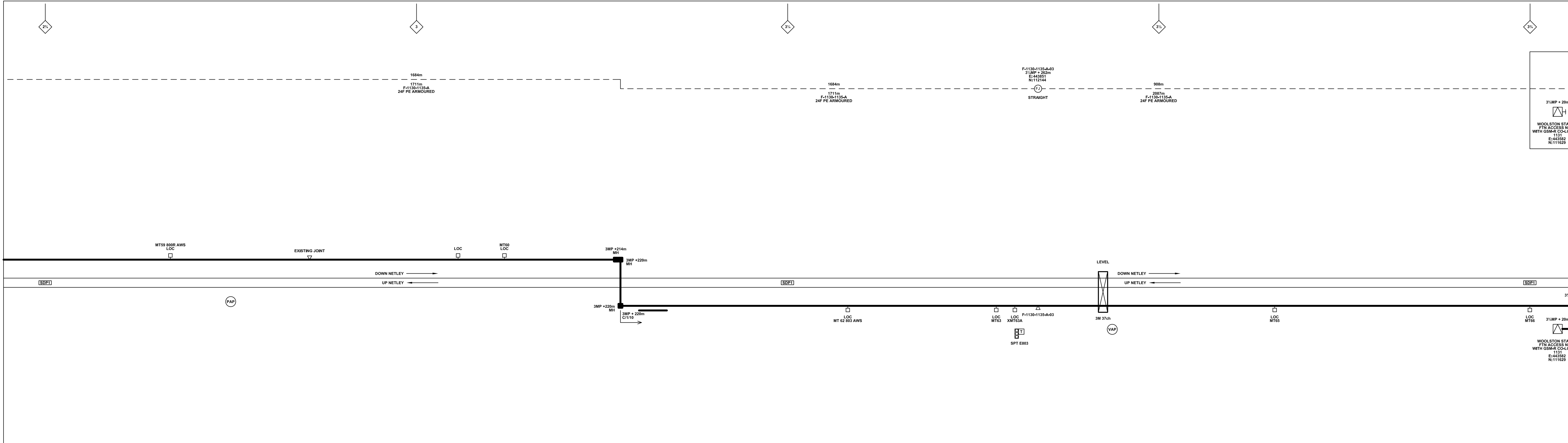
Designed	Andy Bone	Sign.	Date	23/08/2011
Drawn	Andy Bone	Sign.	Date	23/08/2011
Checked	Dave Peakman	Sign.	Date	23/08/2011
Approved	Prakash Patel (C.R.E)	Sign.	Date	23/08/2011
Project				
FTN/GSM-R Project Stage 2 As-Built				
Drawing Title				
St. Denys (1130) to Woolston Station (1131)				

Alternative Reference
 See Layout Tab A3 Sheets 1 and 2

Drawing Number
 NTPO\SLD\1130\1131\001

Sheet
 1 of 3

Revision
 A



Legend

Cabinet and Verts	Copper Joint	Trough Duct Cable Tray	Signal Box	FTN Core Node	Screen Joint Routeworks	Manhole	Overbridge	Signal	Engineer's Line Reference	Gas Line
Cabinet with Regenerator and Verts	Fibre Joint	Cable - Type Identified by FTN Code Status - as per Key Below	Electrical Control Room	Core Node with GSM-R Colocated	Copper Joint Routeworks	Mid Length Sheath Gap Fibre	Underbridge	Vehicle Access Point	Mile Post	HV Cable
KEY Proposed Fibre & Civils Elements are shown in RED Proposed Copper Elements are shown in BLUE Proposed Screening Elements are shown in MAGENTA All Recoveries are shown in GREEN	Screening Conductor Joint with/without Earth	Manhole	FTN Access Node	FTN Access Node with GSM-R Colocated	Cabinet Routeworks	Sheath Gap Copper	Tunnel	Pedestrian Access Point	Platform	LV Cable
					Fibre Joint Routeworks		Earth Farm	Buffer Stop	Telephone	Sewer
							Cable Pull	Mast		Telecoms

Notes

A	08-01-2013	Amended by NWR to incorporate final Stage 2 detail	PT	PB	GH
AB4	22-10-12	Spur Cables Added to Drawing, AS-BUILT	AB	DP	PP
AB3	23/08/11	FJ 02 & 03 Amended, Electronic Signatures Added, AS-BUILT	AB	DP	PP
AB2	16/08/10	CCTV additional cable arrangements shown, AS-BUILT	AB	DP	PP
AB1	23/04/10	AS-BUILT Issue	AB	DP	PP
DA	16/09/08	1st Issue	JO	MT	SW
Rev	Date	Description of Revisions	Drawn	Chkd	Appr

Contractor(s)

As Built

ELR & Mileage
BML1 & SDP1

Scale(s)
NTS

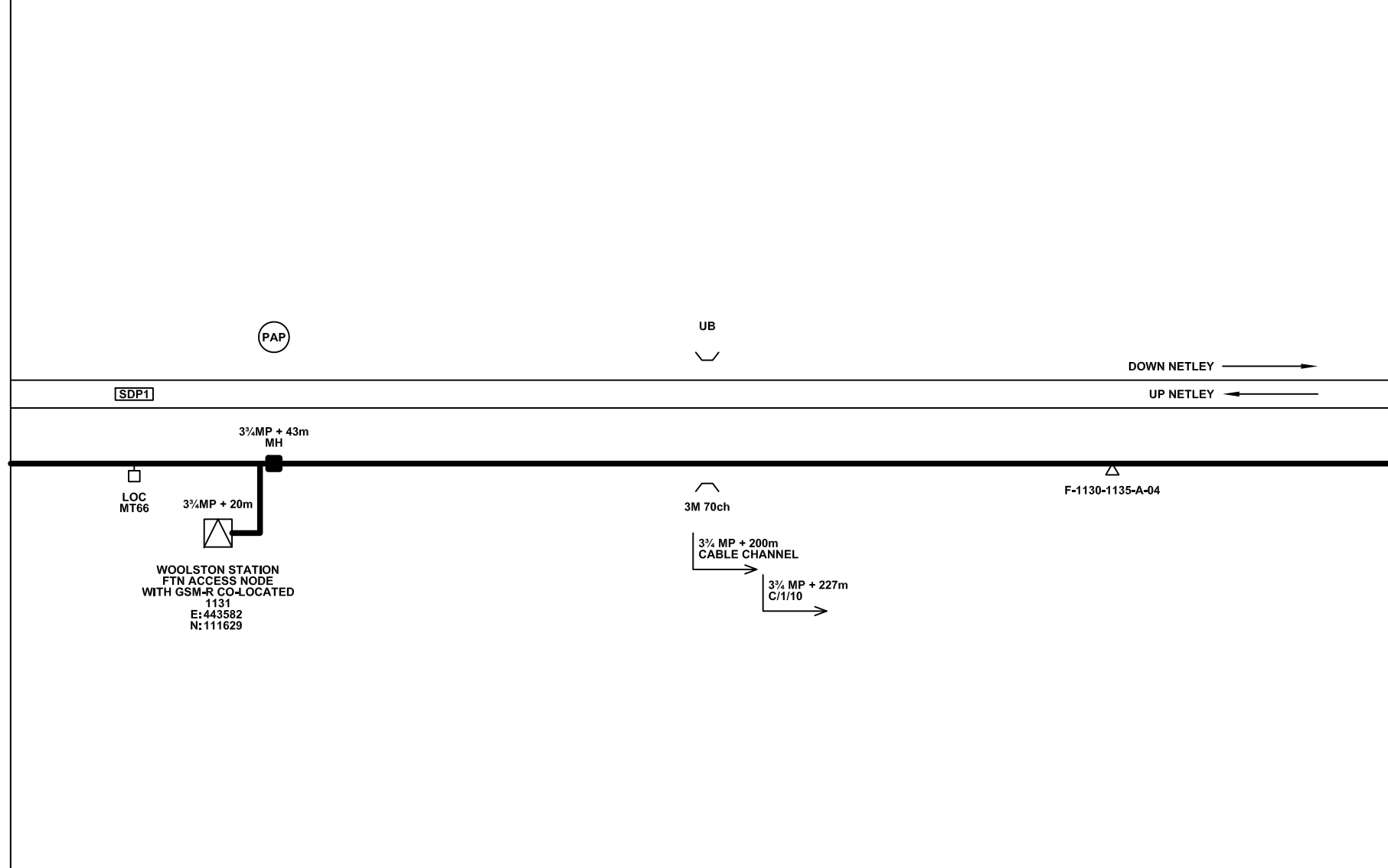
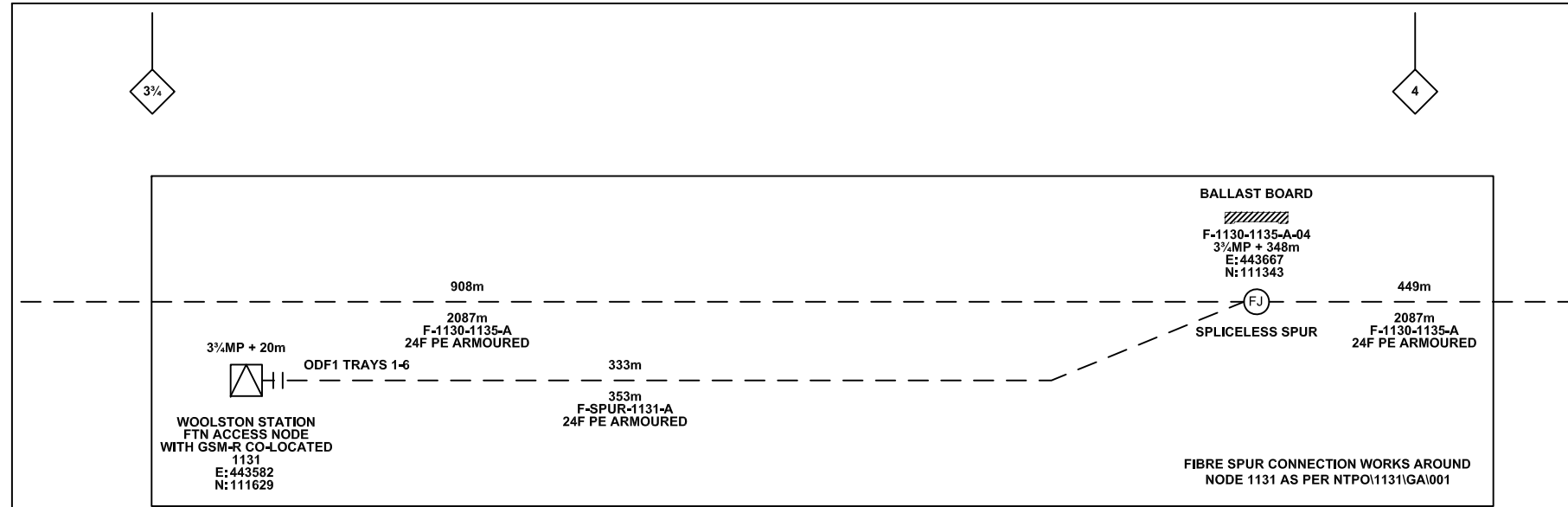
Designed	Andy Bone	Sign.	Date	23/08/2011
Drawn	Andy Bone	Sign.	Date	23/08/2011
Checked	Dave Peakman	Sign.	Date	23/08/2011
Approved	Prekash Patel (C.R.E)	Sign.	Date	23/08/2011
Project	FTN/GSM-R Project Stage 2 As-Built			
Drawing Title	St. Denys (1130) to Woolston Station (1131)			

Alternative Reference: See Layout Tab A3 Sheets 3 and 4

Sheet 2 of 3

Revision A

Drawing Number: NTP0\SLD\1130\1131\001



Legend

Cabinet and Verts	Copper Joint	Trough Duct Cable Tray	Signal Box	FTN Core Node	Screen Joint Routeworks	Manhole	Overbridge	Signal	Engineer's Line Reference	Crossing	Gas Line
Cabinet with Regenerator and Verts	Fibre Joint	Cable - Type Identified by FTN Code Status - as per Key Below	Electrical Control Room	Core Node with GSM-R Colocated	Copper Joint Routeworks	Manhole details: Cross-To be used Filled-In use Clear-Empty	Underbridge	Vehicle Access Point	Mile Post	Gantry	HV Cable
KEY Proposed Fibre & Civils Elements are shown in RED Proposed Copper Elements are shown in BLUE Proposed Screening Elements are shown in MAGENTA All Recoveries are shown in GREEN	Screening Conductor Joint with/without Earth	Existing Fibre Cable	Manhole	FTN Access Node	Cabinet Routeworks	Tunnel	Earth Farm	Pedestrian Access Point	Platform	Sewer	LV Cable
	Existing Copper Cable	Existing Screen Cable	Mid Length Sheath Gap Fibre	FTN Access Node with GSM-R Colocated	Fibre Joint Routeworks	Buffer Stop	Telephone	Copper Blue Fibre	Mast	Telecoms	Water

Notes

Rev	Date	Description of Revisions	Drawn	Chkd	Appr
A	08-01-2013	Amended by NWR to incorporate final Stage 2 detail	PT	PB	GH
AB4	22-10-12	Spur Cables Added to Drawing, AS-BUILT	AB	DP	PP
AB3	23/08/11	FJ 02 & 03 Amended, Electronic Signatures Added, AS-BUILT	AB	DP	PP
AB2	16/08/10	CCTV additional cable arrangements shown, AS-BUILT	AB	DP	PP
AB1	23/04/10	AS-BUILT Issue	AB	DP	PP
DA	16/09/08	1st Issue	JO	MT	SW

Contractor(s)

As Built

ELR & Mileage
BML1 & SDP1

Designed	Andy Bone	Sign.		Date	23/08/2011
Drawn	Andy Bone	Sign.		Date	23/08/2011
Checked	Dave Peakman	Sign.		Date	23/08/2011
Approved	Prekash Patel (C.R.E)	Sign.		Date	23/08/2011

Project

FTN/GSM-R Project
Stage 2 As-Built

Drawing Title

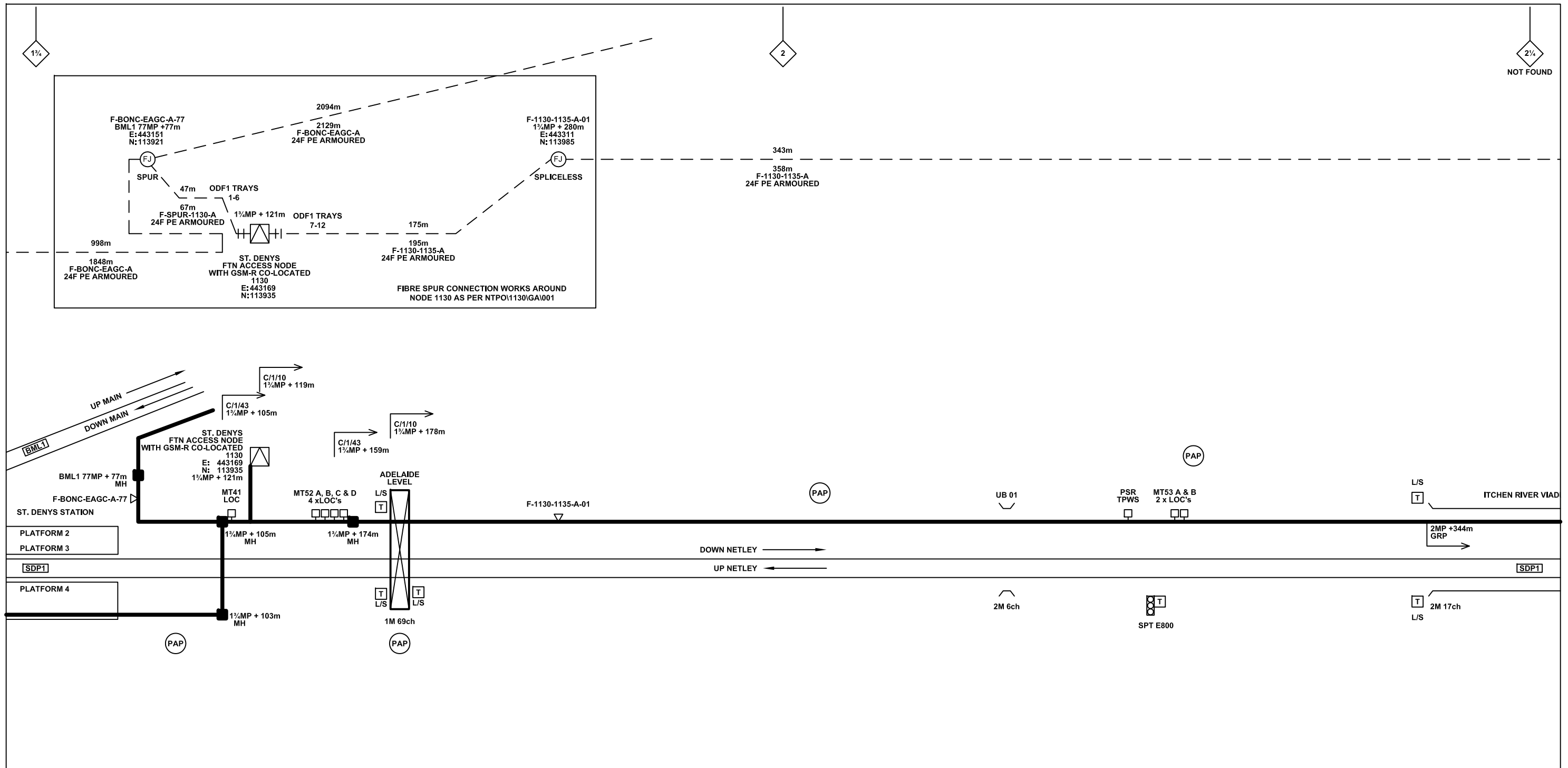
St. Denys (1130) to
Woolston Station (1131)

Alternative Reference

See Layout Tab A3 Sheet 5

Sheet 3 of 3

Revision A



Legend

	Cabinet and Verts		Copper Joint		Trough Duct Cable Tray		Signal Box		FTN Core Node		Screen Joint Routeworks		Overbridge		Signal		Engineer's Line Reference		Crossing		Gas Line
	Cabinet with Regenerator and Verts		Fibre Joint		Cable - Type Identified by FTN Code		Electrical Control Room		Core Node with GSM-R Colocated		Copper Joint Routeworks		Underbridge		Vehicle Access Point		Mile Post		Gantry		HV Cable
	KEY		Screening Conductor Joint with/without Earth		Manhole		Mid Length Sheath Gap Fibre		FTN Access Node		Cabinet Routeworks		Tunnel		Pedestrian Access Point		Platform		Sewer		LV Cable
Proposed Fibre & Civils Elements are shown in RED	Proposed Fibre & Civils Elements are shown in RED		Existing Fibre Cable		FTN Access Node with GSM-R Colocated		Sheath Gap Copper		Fibre Joint Routeworks		Earth Farm		Buffer Stop		Telephone		Cable Pull		Water		Mast

Notes

Rev	Date	Description of Revisions	Drawn	Chkd	Appr
A	08-01-2013	Amended by NWR to incorporate final Stage 2 detail	PT	PB	GH
AB4	22-10-12	Spur Cables Added to Drawing, AS-BUILT	AB	DP	PP
AB3	23/08/11	FJ 02 & 03 Amended, Electronic Signatures Added, AS-BUILT	AB	DP	PP
AB2	16/08/10	CCTV additional cable arrangements shown, AS-BUILT	AB	DP	PP
AB1	23/04/10	AS-BUILT Issue	AB	DP	PP
DA	16/09/08	1st Issue	JO	MT	SW

Contractor(s)

Status: **As Built**

Scale(s): NTS

ELR & Mileage: BML1 & SDP1

Designed	Andy Bone	Sign.	Date	23/08/2011
Drawn	Andy Bone	Sign.	Date	23/08/2011
Checked	Dave Peakman	Sign.	Date	23/08/2011
Approved	Prekash Patel (C.R.E)	Sign.	Date	23/08/2011
Project	FTN/GSM-R Project Stage 2 As-Built			
Drawing Title	St. Denys (1130) to Woolston Station (1131)			

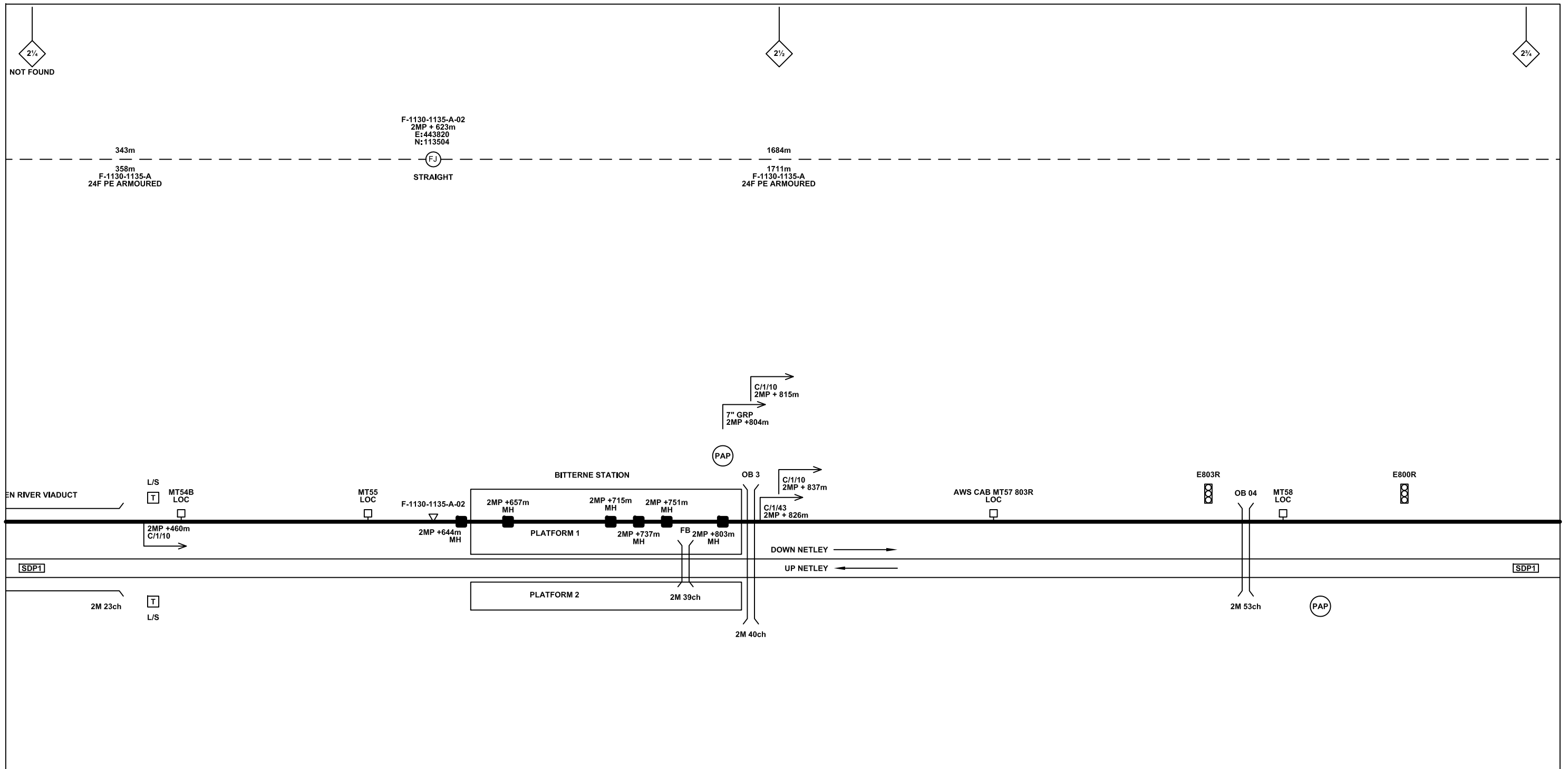
FTN/GSM-R Project
Tournament House
Paddington
London
W2 1HA

Alternative Reference: See Layout Tab 841 x 297 Sheet 1

Drawing Number: NTPO\SLD\1130\1131\001

Sheet: 1 of 5

Revision: A



Legend

	Cabinet and Verts		Copper Joint		Trough Duct Cable Tray		Signal Box		FTN Core Node		Screen Joint Routeworks		Overbridge		Signal		Engineer's Line Reference		Gas Line
	Cabinet with Regenerator and Verts		Fibre Joint		Cable - Type Identified by FTN Code		Electrical Control Room		Core Node with GSM-R Colocated		Copper Joint Routeworks		Underbridge		Vehicle Access Point		Mile Post		HV Cable
	KEY		Screening Conductor Joint with/without Earth		Manhole		Mid Length Sheath Gap Fibre		FTN Access Node		Cabinet Routeworks		Tunnel		Pedestrian Access Point		Platform		LV Cable
	Proposed Fibre & Civils Elements are shown in RED		All Existing Elements are shown in BLACK		Sheath Gap Copper		FTN Access Node with GSM-R Colocated		Fibre Joint Routeworks		Earth Farm		Buffer Stop		Cable Pull		Gantry		Sewer
	Proposed Copper Elements are shown in BLUE		Existing Fibre Cable		Status - as per Key Below		Water		Mast		Crossing		Gas		Mast		Sewer		Telecoms
	Proposed Screening Elements are shown in MAGENTA		Existing Copper Cable		Existing Screen Cable		Water												
	All Recoveries are shown in GREEN																		

Notes

Rev	Date	Description of Revisions	Drawn	Chkd	Appr
A	08-01-2013	Amended by NWR to incorporate final Stage 2 detail	PT	PB	GH
AB4	22-10-12	Spur Cables Added to Drawing, AS-BUILT	AB	DP	PP
AB3	23/08/11	FJ 02 & 03 Amended, Electronic Signatures Added, AS-BUILT	AB	DP	PP
AB2	16/08/10	CCTV additional cable arrangements shown, AS-BUILT	AB	DP	PP
AB1	23/04/10	AS-BUILT Issue	AB	DP	PP
DA	16/09/08	1st Issue	JO	MT	SW

Contractor(s)

Contractor: bam nuttall

Status: **As Built**

Scale(s): NTS

ELR & Mileage: BML1 & SDP1

Designed	Andy Bone	Sign.		Date	23/08/2011
Drawn	Andy Bone	Sign.		Date	23/08/2011
Checked	Dave Peakman	Sign.		Date	23/08/2011
Approved	Prekash Patel (C.R.E)	Sign.		Date	23/08/2011
Project	FTN/GSM-R Project Stage 2 As-Built				
Drawing Title	St. Denys (1130) to Woolston Station (1131)				

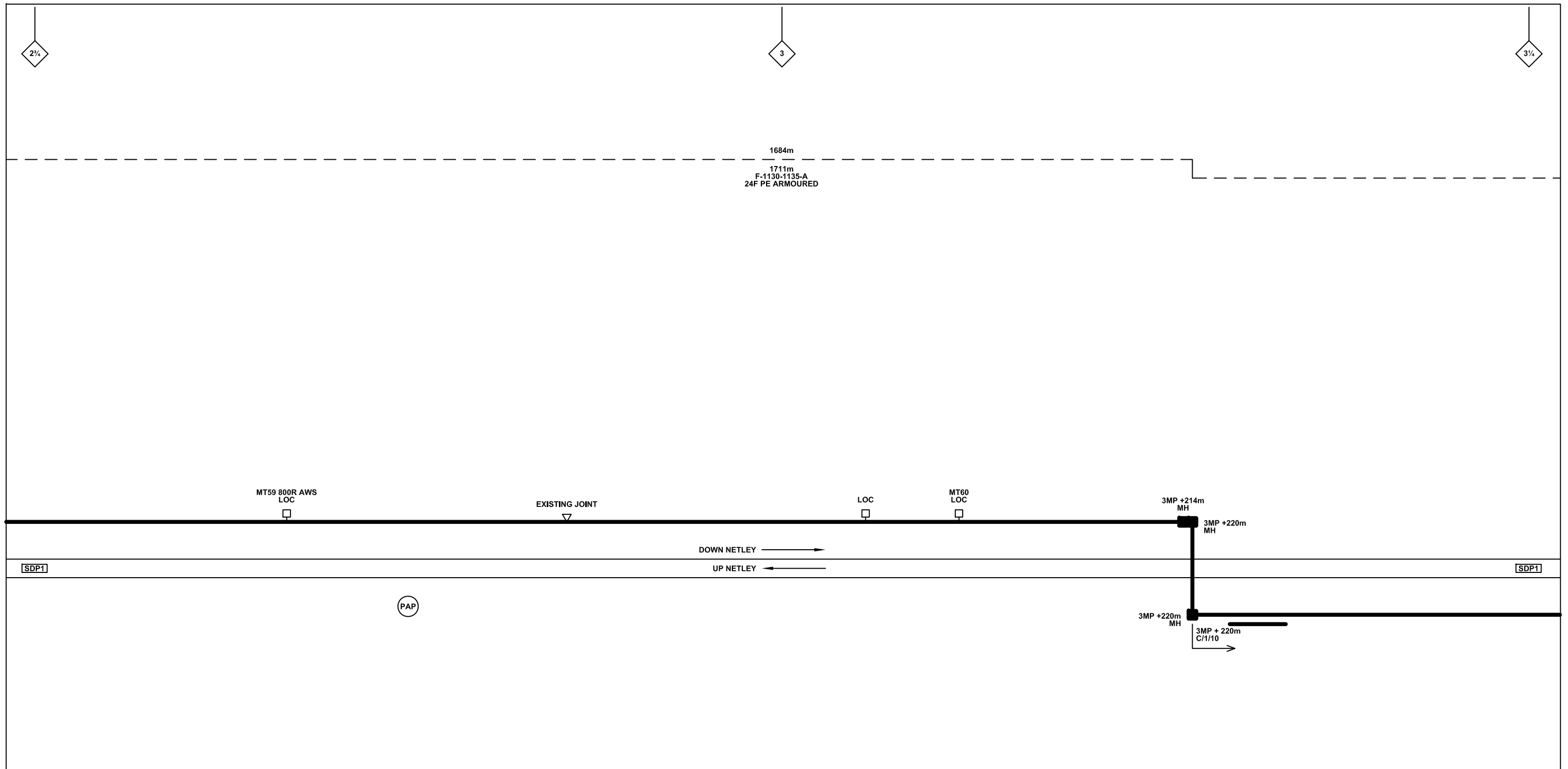
FTN/GSM-R Project
Tournament House
Paddington
London
W2 1HA

Alternative Reference: See Layout Tab 841 x 297 Sheet 1

Drawing Number: NTPO\SLD\1130\1131\001

Sheet: 2 of 5

Revision: A



Legend

Cabinet and Verts	Copper Joint	Trough Duct Cable Tray	Signal Box	FTN Core Node	Screen Joint Routeworks	Overbridge	Signal	Engineer's Line Reference	Crossing	Gas Line
Cabinet with Regenerator and Verts	Fibre Joint	Cable - Type Identified by FTN Code	Electrical Control Room	Core Node with GSM-R Colocated	Copper Joint Routeworks	Underbridge	Vehicle Access Point	Mile Post	HV Cable	LV Cable
KEY Proposed Fibre & Civils Elements are shown in RED Proposed Copper Elements are shown in BLUE Proposed Screening Elements are shown in MAGENTA All Recoveries are shown in GREEN	Screening Conductor Joint with/without Earth	Manhole	Mid Length Sheath Gap Fibre	FTN Access Node	Cabinet Routeworks	Tunnel	Pedestrian Access Point	Platform	Sewer	Telecoms
	Existing Fibre Cable	Sheath Gap Copper	FTN Access Node with GSM-R Colocated	Fibre Joint Routeworks	Earth Farm	Buffer Stop	Telephone	Gantry	Water	Mast
	Existing Copper Cable							Cable Pull		
	Existing Screen Cable									

Notes

Rev	Date	Description of Revisions	Drawn	Chkd	Appr
A	08-01-2013	Amended by NWR to incorporate final Stage 2 detail	PT	PB	GH
AB4	22-10-12	Spur Cables Added to Drawing, AS-BUILT	AB	DP	PP
AB3	23/08/11	FJ 02 & 03 Amended, Electronic Signatures Added, AS-BUILT	AB	DP	PP
AB2	16/08/10	CCTV additional cable arrangements shown, AS-BUILT	AB	DP	PP
AB1	23/04/10	AS-BUILT Issue	AB	DP	PP
DA	16/09/08	1st Issue	JO	MT	SW

Contractor(s)

bam nuttall

Status: **As Built**

Scale(s): **NTS**

ELR & Mileage: **BML1 & SDP1**

Designed	Andy Bone	Sign.		Date	23/08/2011
Drawn	Andy Bone	Sign.		Date	23/08/2011
Checked	Dave Peakman	Sign.		Date	23/08/2011
Approved	Prekash Patel (C.R.E)	Sign.		Date	23/08/2011
Project	FTN/GSM-R Project Stage 2 As-Built				
Drawing Title	St. Denys (1130) to Woolston Station (1131)				

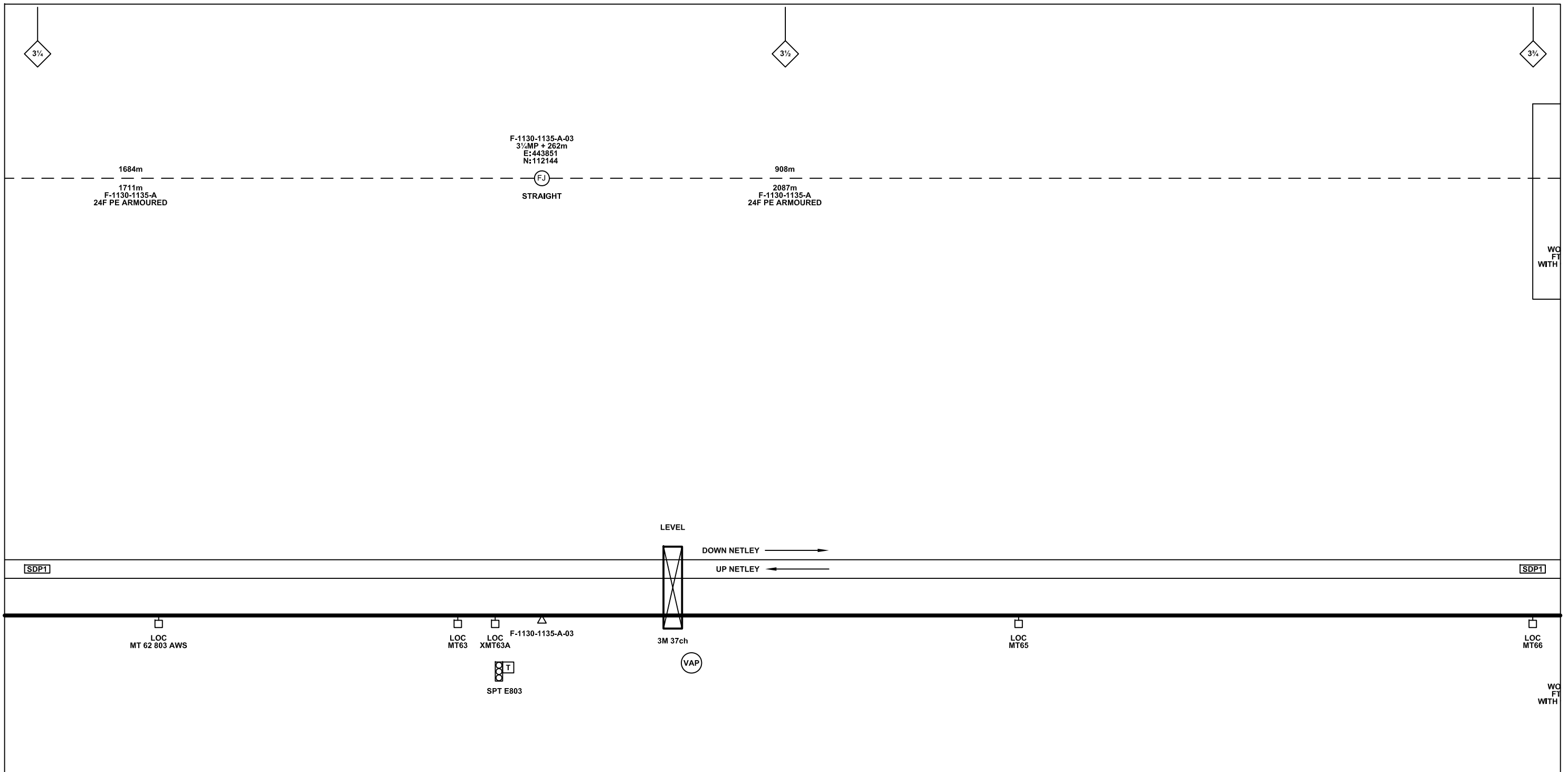
FTN/GSM-R Project
Tournament House
Paddington
London
W2 1HA

Alternative Reference: **See Layout Tab 841 x 297 Sheet 2**

Drawing Number: **NTPO\SLD\1130\1131\001**

Sheet: **3 of 5**

Revision: **A**



Legend

Cabinet and Verts	Copper Joint	Trough Duct Cable Tray	Signal Box	FTN Core Node	Screen Joint Routeworks	Overbridge	Signal	Engineer's Line Reference	Crossing	Gas Line
Cabinet with Regenerator and Verts	Fibre Joint	Cable - Type Identified by FTN Code	Electrical Control Room	Core Node with GSM-R Colocated	Copper Joint Routeworks	Underbridge	Vehicle Access Point	Mile Post	Gantry	HV Cable
KEY Proposed Fibre & Civils Elements are shown in RED Proposed Copper Elements are shown in BLUE Proposed Screening Elements are shown in MAGENTA All Recoveries are shown in GREEN	Screening Conductor Joint with/without Earth	Manhole	Mid Length Sheath Gap Fibre	FTN Access Node	Cabinet Routeworks	Tunnel	Pedestrian Access Point	Platform	Sewer	LV Cable
	Existing Fibre Cable	FTN Access Node with GSM-R Colocated	Sheath Gap Copper	Fibre Joint Routeworks	Earth Farm	Buffer Stop	Telephone	Cable Pull	Water	Mast

Rev	Date	Description of Revisions	Drawn	Chkd	Appr
A	08-01-2013	Amended by NWR to incorporate final Stage 2 detail	PT	PB	GH
AB4	22-10-12	Spur Cables Added to Drawing, AS-BUILT	AB	DP	PP
AB3	23/08/11	FJ 02 & 03 Amended, Electronic Signatures Added, AS-BUILT	AB	DP	PP
AB2	16/08/10	CCTV additional cable arrangements shown, AS-BUILT	AB	DP	PP
AB1	23/04/10	AS-BUILT Issue	AB	DP	PP
DA	16/09/08	1st Issue	JO	MT	SW

Contractor(s)

Status: **As Built**

Scale(s): NTS

ELR & Mileage: BML1 & SDP1

Designed	Andy Bone	Sign.	Date	23/08/2011
Drawn	Andy Bone	Sign.	Date	23/08/2011
Checked	Dave Peakman	Sign.	Date	23/08/2011
Approved	Prekash Patel (C.R.E)	Sign.	Date	23/08/2011
Project	FTN/GSM-R Project Stage 2 As-Built			
Drawing Title	St. Denys (1130) to Woolston Station (1131)			

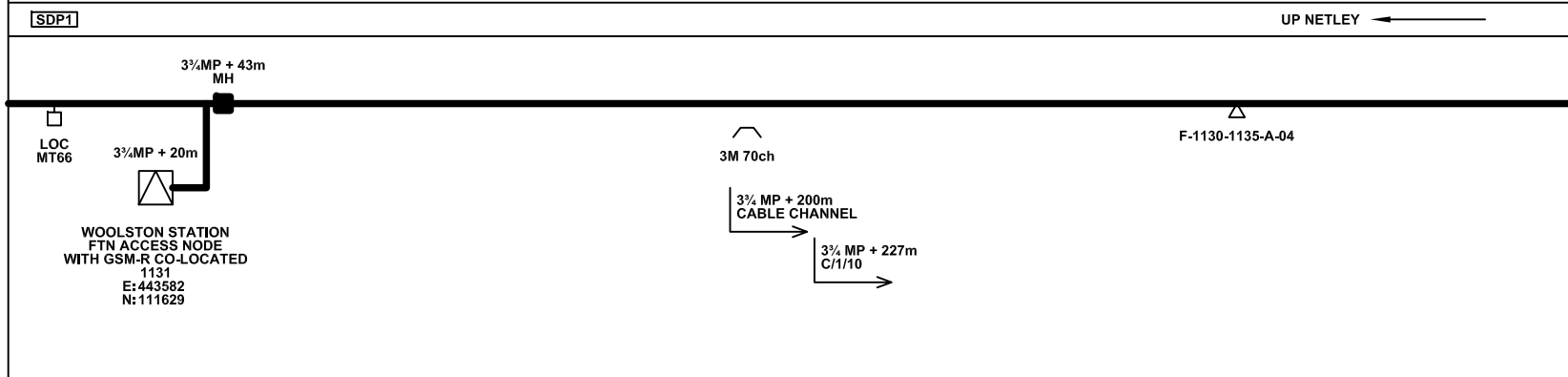
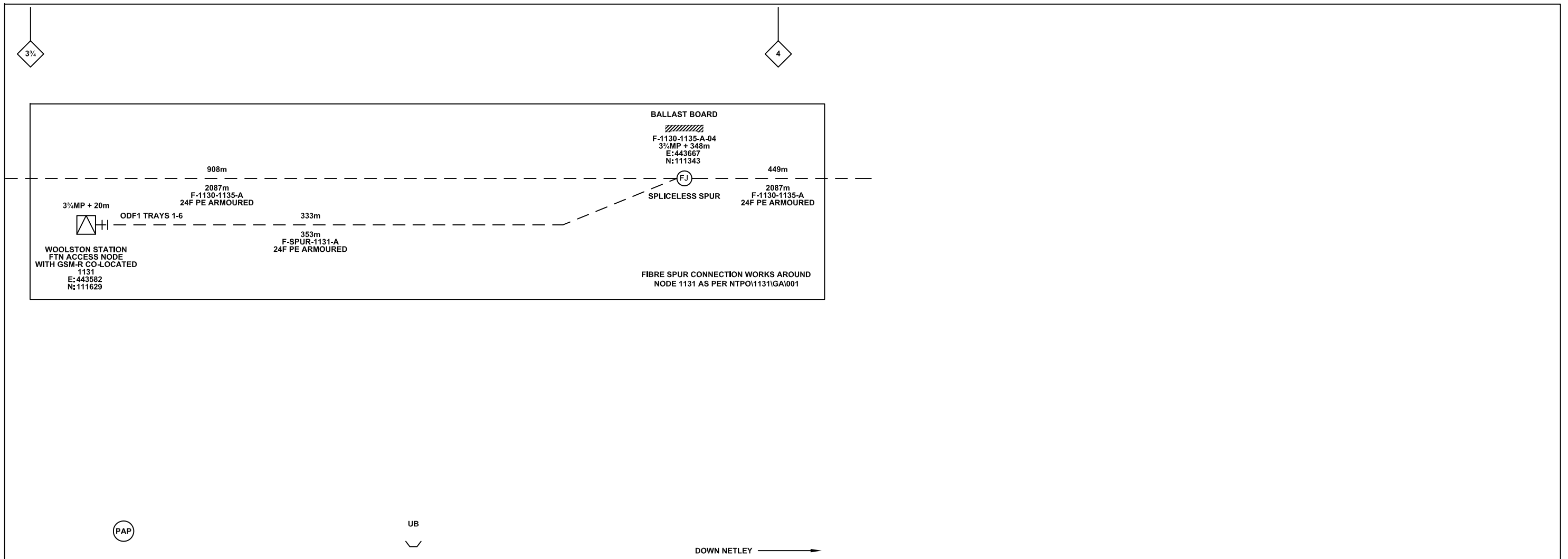
FTN/GSM-R Project
Tournament House
Paddington
London
W2 1HA

Alternative Reference: See Layout Tab 841 x 297 Sheet 2

Drawing Number: NTPO\SLD\1130\1131\001

Sheet: 4 of 5

Revision: A



Legend

Cabinet and Verts	Copper Joint	Trough Duct Cable Tray	Signal Box	FTN Core Node	Screen Joint Routeworks	Overbridge	Signal	Engineer's Line Reference	Crossing	GAS — GAS — Gas Line
Cabinet with Regenerator and Verts	Fibre Joint	Cable - Type Identified by FTN Code	Electrical Control Room	Core Node with GSM-R Colocated	Copper Joint Routeworks	Underbridge	VAP Vehicle Access Point	Mile Post	HV — HV — HV Cable	LV — LV — LV Cable
KEY Proposed Fibre & Civils Elements are shown in RED Proposed Copper Elements are shown in BLUE Proposed Screening Elements are shown in MAGENTA All Recoveries are shown in GREEN	Screening Conductor Joint with/without Earth	Status - as per Key Below	Manhole	FTN Access Node	Cabinet Routeworks	Manhole details: Cross-To be used Filled-In use Clear-Empty	PAP Pedestrian Access Point	Platform	SEW — SEW — Sewer	TEL — TEL — Telecoms
		Existing Fibre Cable	Mid Length Sheath Gap Fibre	FTN Access Node with GSM-R Colocated	Fibre Joint Routeworks	Tunnel	Earth Farm	Buffer Stop	W — W — Water	Mast
		Existing Copper Cable	Sheath Gap Copper					Telephone		
		Existing Screen Cable								

Notes

Rev	Date	Description of Revisions	Drawn	Chkd	Appr
A	08-01-2013	Amended by NWR to incorporate final Stage 2 detail	PT	PB	GH
AB4	22-10-12	Spur Cables Added to Drawing, AS-BUILT	AB	DP	PP
AB3	23/08/11	FJ 02 & 03 Amended, Electronic Signatures Added, AS-BUILT	AB	DP	PP
AB2	16/08/10	CCTV additional cable arrangements shown, AS-BUILT	AB	DP	PP
AB1	23/04/10	AS-BUILT Issue	AB	DP	PP
DA	16/09/08	1st Issue	JO	MT	SW

Contractor(s)

As Built

Scale(s) NTS

ELR & Mileage BML1 & SDP1

Designed	Andy Bone	Sign.	Date	23/08/2011
Drawn	Andy Bone	Sign.	Date	23/08/2011
Checked	Dave Peakman	Sign.	Date	23/08/2011
Approved	Prekash Patel (C.R.E)	Sign.	Date	23/08/2011
Project	FTN/GSM-R Project Stage 2 As-Built			
Drawing Title	St. Denys (1130) to Woolston Station (1131)			

FTN/GSM-R Project
Tournament House
Paddington
London
W2 1HA

Alternative Reference See Layout Tab 841 x 297 Sheet 3

Drawing Number NTPO\SLD\1130\1131\001

Sheet 5 of 5

Revision A