

Bill of Quantities			
7.359	Renumber Fibre Joint	each	3
7.373	Rename Cable (Fibre)	each	2

Legend

- Cabinet and Verts
- Cabinet with Regenerator and Verts
- Copper Joint
- Fibre Joint
- Screening Conductor Joint with/without Earth
- Trough Duct Cable Tray
- Signal Box
- Electrical Control Room
- Manhole
- Mid Length Sheath Gap Fibre
- Sheath Gap Copper
- FTN Core Node
- Core Node with GSM-R Colocated
- FTN Access Node
- FTN Access Node with GSM-R Colocated
- Screen Joint Routeworks
- Copper Joint Routeworks
- Cabinet Routeworks
- Fibre Joint Routeworks
- Manhole details: Cross - To be used, Filled - In use, Clear - Empty
- Tunnel
- Overbridge
- Underbridge
- Signal
- Vehicle Access Point
- Pedestrian Access Point
- Engineer's Line Reference
- Mile Post
- Platform
- Telephone
- Earth Farm
- Buffer Stop
- Crossing
- Gantry
- Cable Pull
- Copper Blue Fibre Red Screen Green
- AC Stanchion

KEY

- Proposed Fibre & Civils Elements are shown in RED
- Proposed Copper Elements are shown in BLUE
- Proposed Screening Elements are shown in MAGENTA
- All Recoveries are shown in GREEN
- All Existing Elements are shown in BLACK
- Existing Fibre Cable
- Existing Copper Cable
- Existing Screen Cable

Notes

B	30/11/10	Stage 2 Design - First Issue Redrafted from NTPOSLD24102411001A.dwg	AB	JW	CT
A	20/05/08	Final Issue	MT	DH	SW
DA	28/04/08	First Issue	MT	DH	SW
Rev	Date	Description of Revisions	Drawn	Chkd	Appr

ndcconsultants
Unit 4 Apex Park, Wainwright Road, Worcester, Worcestershire, WR4 9FN. Tel: 01905 756000

Design

Scale(s): ELR & Mileage
AAV

FTN / GSM-R Project Stage 2 Design

Bagshot Tunnel (2410) to Camberley Station (2411)

Designed: NDC Consultants
Drawn: Adam Bourne
Checked: Joe Winter
Approved: Chris Tappenden

Signatures and Dates: 30/11/10

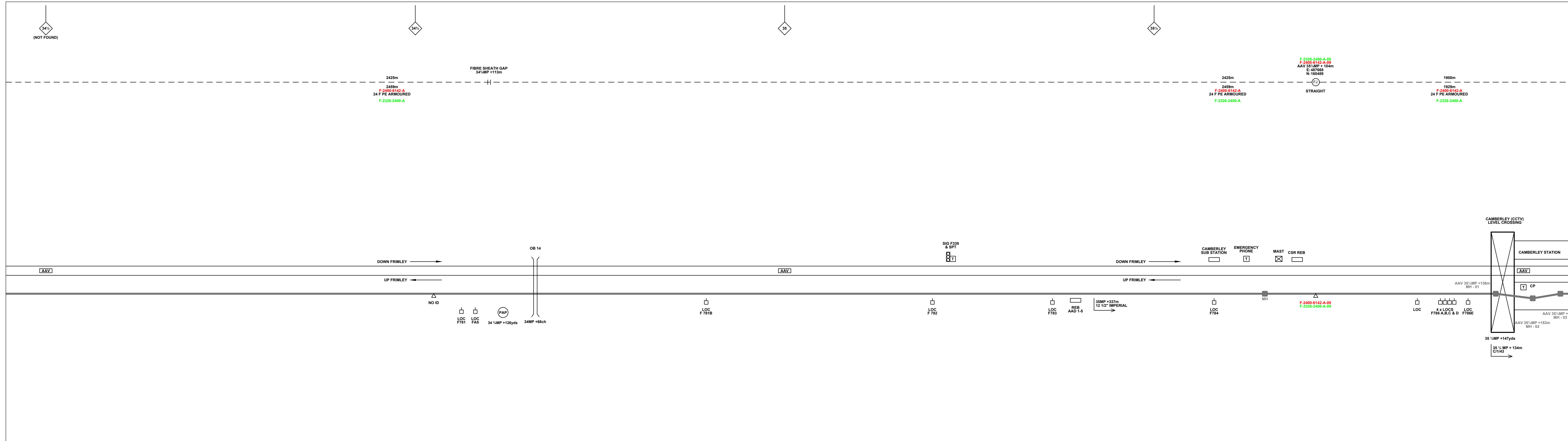
Network Rail

FTN/GSM-R Project
Tournament House
Paxington
London
W2 1HA

Alternative Reference: See Layout Tab A3 Sheets 1 and 2

Drawing Number: NTPOSLD\2410\2411\001

Sheet 1 of 4
Revision B



Legend

Cabinet and Verts	Copper Joint	Trough Duct Cable Tray	Signal Box	FTN Core Node	Screen Joint Routeworks	Manhole details: Cross - To be used, Filled - In use, Clear - Empty	Overbridge	Signal	MLNT	Engineer's Line Reference	Gas Line	HV Cable	LV Cable	Sewer	Telecoms	Water
Cabinet with Regenerator and Verts	Fibre Joint	Cable - Type Identified by FTN Code	Electrical Control Room	Core Node with GSM-R Colocated	Copper Joint Routeworks	Tunnel	Underbridge	Vehicle Access Point	Mile Post	Platform	Crossing	Gantry	Copper Blue Fibre	Red Fibre	Screen Green	AC Stanchion
Screening Conductor Joint with/without Earth	Manhole	Manhole Length Sheath Gap Fibre	Mid Length Sheath Gap Fibre	FTN Access Node	Cabinet Routeworks	Fibre Joint Routeworks	Earth Farm	Buffer Stop	Telephone	Cable Pull						

KEY

Proposed Fibre & Civils Elements are shown in RED
 Proposed Copper Elements are shown in BLUE
 Proposed Screening Elements are shown in MAGENTA
 All Recoveries are shown in GREEN

All Existing Elements are shown in BLACK
 Existing Fibre Cable
 Existing Copper Cable
 Existing Screen Cable

Notes

B	30/11/10	Stage 2 Design - First Issue Redrafted from NTPOSLD24102411001A.dwg	AB	JW	CT
A	20/05/08	Final Issue	MT	DH	SW
DA	28/04/08	First Issue	MT	DH	SW
Rev	Date	Description of Revisions	Drawn	Chkd	Appr

ndcconsultants
 Unit 4 Apex Park, Wainwright Road, Worcester, Worcestershire, WR4 9FN. Tel: 01905 756000

Design

Contractor(s): NTS
 Scale(s): AAV

Designed	NDC Consultants	Sign.	Date	30/11/10
Drawn	Adam Bourne	Sign.	Date	30/11/10
Checked	Joe Winter	Sign.	Date	30/11/10
Approved	Chris Tappenden	Sign.	Date	30/11/10

FTN / GSM-R Project Stage 2 Design

Bagshot Tunnel (2410) to Camberley Station (2411)

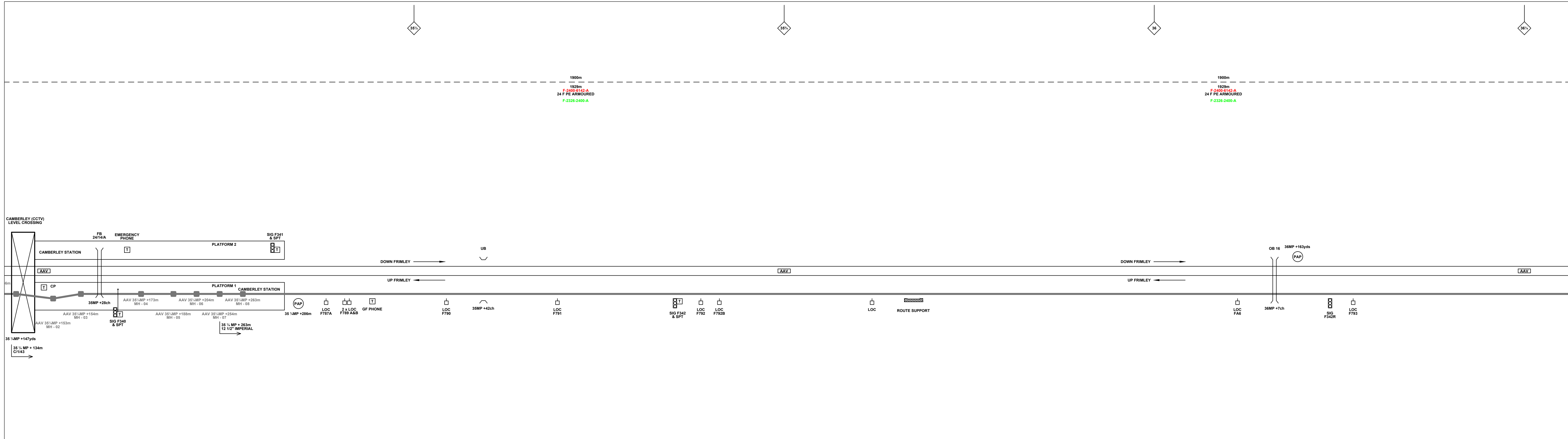
Network Rail

FTN/GSM-R Project
 Tournament House
 Passington
 London
 W2 1HA

Alternative Reference: See Layout Tab A3 Sheets 3 and 4

Drawing Number: NTPOSLD\2410\2411\001

Sheet 2 of 4
 Revision B



Legend

Cabinet and Verts	Copper Joint	Trough Duct Cable Tray	Signal Box	FTN Core Node	Screen Joint Routeworks	Manhole details: Cross-To be used	Overbridge	Signal	Engineer's Line Reference	Crossing	Gas Line
Cabinet with Regenerator and Verts	Fibre Joint	Cable - Type Identified by FTN Code	Electrical Control Room	Core Node with GSM-R Colocated	Copper Joint Routeworks	Manhole	Underbridge	Vehicle Access Point	Mile Post	Gantry	HV Cable
KEY	Screening Conductor Joint with/without Earth	Status - as per Key Below	Manhole	FTN Access Node	Cabinet Routeworks	Mid Length Sheath Gap Fibre	Tunnel	Pedestrian Access Point	Platform	Sewer	LV Cable
Proposed Fibre & Civils Elements are shown in RED	Existing Fibre Cable	Existing Copper Cable	Sheath Gap Copper	FTN Access Node with GSM-R Colocated	Fibre Joint Routeworks	Clear-Empty	Earth Farm	Buffer Stop	Telephone	Copper Blue Fibre Red Screen Green	AC Stanchion

Notes

Rev	Date	Description of Revisions	Drawn	Chkd	Appr
B	30/11/10	Stage 2 Design - First Issue Redrafted from NTP\SLD\2410\2411\001A.dwg	AB	JW	CT
A	20/05/08	Final Issue	MT	DH	SW
DA	28/04/08	First Issue	MT	DH	SW

ndcconsultants
Unit 4 Apex Park, Wainwright Road, Worcester, Worcestershire, WR4 9FN. Tel: 01905 756000

Design

Contractor(s): NTS
Scale(s): AAV

Designed	NDC Consultants	Sign.		Date	30/11/10
Drawn	Adam Bourne	Sign.		Date	30/11/10
Checked	Joe Winter	Sign.		Date	30/11/10
Approved	Chris Tappenden	Sign.		Date	30/11/10

FTN / GSM-R Project Stage 2 Design

Bagshot Tunnel (2410) to Camberley Station (2411)

Network Rail

FTN/GSM-R Project
Tournament House
Passington
London
W2 1HA

Alternative Reference: See Layout Tab A3 Sheets 5 and 6

Drawing Number: NTP\SLD\2410\2411\001

Sheet: 3 of 4
Revision: B



Legend

Cabinet and Verts	Copper Joint	Trough Duct Cable Tray	Signal Box	FTN Core Node	Screen Joint Routeworks	Manhole details: Cross - To be used, Filled - In use, Clear - Empty	Overbridge	Signal	Engineer's Line Reference
Cabinet with Regenerator and Verts	Fibre Joint	Cable - Type Identified by FTN Code Status - as per Key Below	Electrical Control Room	Core Node with GSM-R Colocated	Copper Joint Routeworks	Tunnel	Underbridge	Vehicle Access Point	Mile Post
KEY	Screening Conductor Joint with/without Earth	Existing Fibre Cable	Manhole	FTN Access Node	Cabinet Routeworks	Earth Farm	Gantry	Pedestrian Access Point	Platform
Proposed Fibre & Civils Elements are shown in RED	Existing Copper Cable	Existing Screen Cable	Mid Length Sheath Gap Fibre	FTN Access Node with GSM-R Colocated	Fibre Joint Routeworks	Buffer Stop	Cable Pull	Copper Blue Fibre Red Screen Green	Telephone
Proposed Copper Elements are shown in BLUE			Sheath Gap Copper					AC Stanchion	
Proposed Screening Elements are shown in MAGENTA									
All Recoveries are shown in GREEN									

Notes

B	30/11/10	Stage 2 Design - First Issue Redrafted from NTPOSLD24102411001A.dwg	AB	JW	CT
A	20/05/08	Final Issue	MT	DH	SW
DA	28/04/08	First Issue	MT	DH	SW
Rev	Date	Description of Revisions	Drawn	Chkd	Appr

Contractor(s)

Status: **Design**

Scale(s): NTS (Drawing), AAV (ELR & Mileage)

Designed	NDC Consultants	Sign.		Date	30/11/10
Drawn	Adam Bourne	Sign.		Date	30/11/10
Checked	Joe Winter	Sign.		Date	30/11/10
Approved	Chris Tappenden	Sign.		Date	30/11/10

FTN / GSM-R Project Stage 2 Design

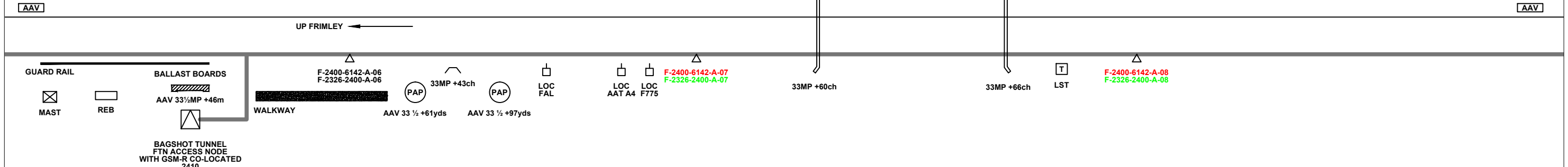
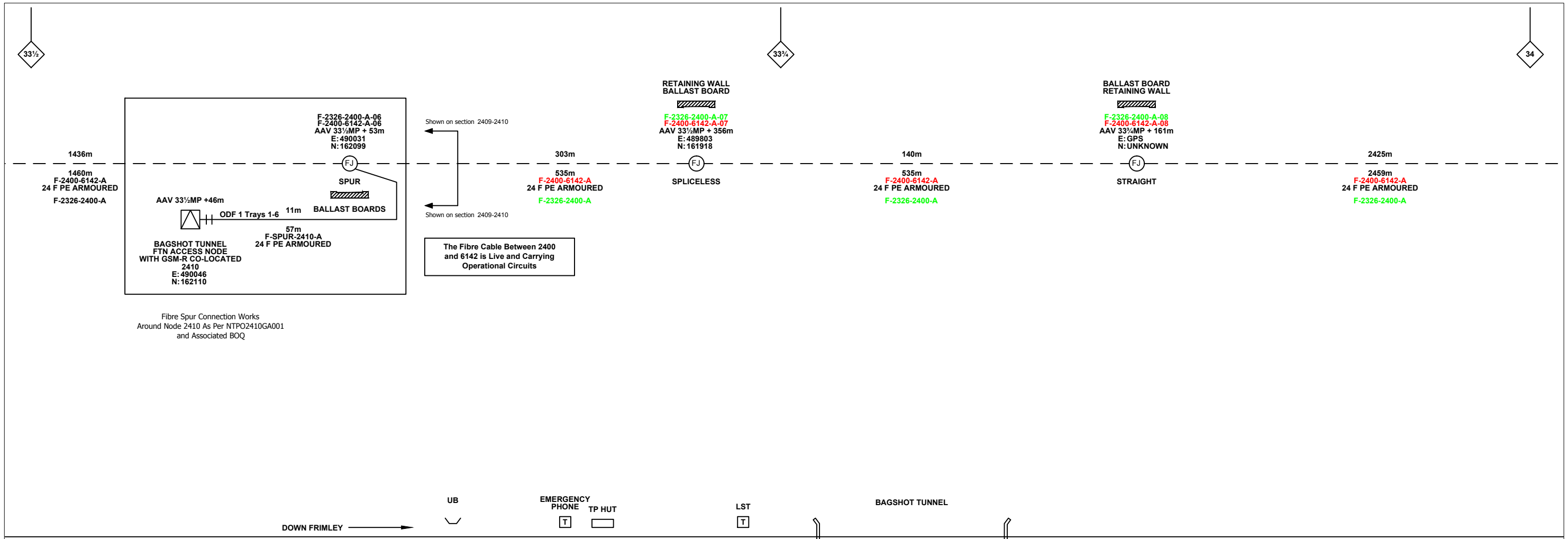
Drawing Title: **Bagshot Tunnel (2410) to Camberley Station (2411)**

Alternative Reference: See Layout Tab A3 Sheets 7 and 8

Drawing Number: NTPO\SLD\2410\2411\001

Sheet: 4 of 4

Revision: B



Bill of Quantities			
7.359	Renumber Fibre Joint	each	3
7.373	Rename Cable (Fibre)	each	2

Legend

- Cabinet and Verts (DC)
- Cabinet with Regenerator and Verts (DC)
- Copper Joint (CJ)
- Fibre Joint (FJ)
- Screening Conductor Joint with/without Earth (SJ)
- Trough Duct Cable Tray (SB)
- Signal Box (SB)
- Electrical Control Room (ECR)
- Manhole
- Mid Length Sheath Gap Fibre
- Sheath Gap Copper
- FTN Core Node
- Core Node with GSM-R Colocated
- FTN Access Node
- FTN Access Node with GSM-R Colocated
- Screen Joint Routeworks
- Copper Joint Routeworks
- Cabinet Routeworks
- Fibre Joint Routeworks
- Manhole details: Cross-To be used, Filled-In use, Clear-Empty
- Tunnel
- Overbridge
- Underbridge
- Signal
- Vehicle Access Point (VAP)
- Pedestrian Access Point (PAP)
- Earth Farm
- Buffer Stop
- Telephone (T)
- Engineer's Line Reference (MLN1)
- Mile Post
- Platform
- Crossing
- Gantry
- Gas Line (GAS)
- HV Cable (HV)
- LV Cable (LV)
- Sewer (SEW)
- Telecoms (TEL)
- Water (W)
- AC Stanchion

KEY

- Proposed Fibre & Civils Elements are shown in RED
- Proposed Copper Elements are shown in BLUE
- Proposed Screening Elements are shown in MAGENTA
- All Recoveries are shown in GREEN
- All Existing Elements are shown in BLACK
- Existing Fibre Cable
- Existing Copper Cable
- Existing Screen Cable

Notes

Rev	Date	Description of Revisions	Drawn	Chkd	Appr
B	30/11/10	Stage 2 Design - First Issue Redrafted from NTPOSLD24102411001A.dwg	AB	JW	CT
A	20/05/08	Final Issue	MT	DH	SW
DA	28/04/08	First Issue	MT	DH	SW

Contractor(s)

Unit 4 Apex Park, Wainwright Road, Worcester, Worcestershire, WR4 9FN. Tel: 01905 756000

Status: **Design**

Scale(s): NTS, AAV

Designed	NDC Consultants	Sign.	Date	30/11/10
Drawn	Adam Bourne	Sign.	Date	30/11/10
Checked	Joe Winter	Sign.	Date	30/11/10
Approved	Chris Tappenden	Sign.	Date	30/11/10
Project	FTN / GSM-R Project Stage 2 Design			
Drawing Title	Bagshot Tunnel (2410) to Camberley Station (2411)			

FTN/GSM-R Project
Tournament House
Faddington
London
W2 1HA

Alternative Reference: See Layout Tab 841 x 297 Sheet 1

Drawing Number: NTPO\SLD\2410\2411\001

Sheet: 1 of 7

Revision: B



Legend

Cabinet and Verts	Copper Joint	Trough Duct Cable Tray	Signal Box	FTN Core Node	Screen Joint Routeworks	Manhole details: Cross-To be used Filled-In use Clear-Empty	Overbridge	Signal	MLN1	Engineer's Line Reference	Crossing	GAS	GAS	Gas Line
Cabinet with Regenerator and Verts	Fibre Joint	Cable - Type Identified by FTN Code	Electrical Control Room	Core Node with GSM-R Colocated	Copper Joint Routeworks	Manhole	Underbridge	VAP	PAP	Vehicle Access Point	Gantry	HV	HV	HV Cable
KEY	Screening Conductor Joint with/without Earth	Status - as per Key Below	Mid Length Sheath Gap Fibre	FTN Access Node	Cabinet Routeworks	Sheath Gap Copper	Tunnel	Earth Farm	Buffer Stop	Platform	Mile Post	SEW	SEW	Sewer
Proposed Fibre & Civils Elements are shown in RED		All Existing Elements are shown in BLACK		FTN Access Node with GSM-R Colocated	Fibre Joint Routeworks		Cable Pull		Telephone	AC Stanchion	W	W	Water	
Proposed Copper Elements are shown in BLUE		Existing Fibre Cable									TEL	TEL	Telecoms	
Proposed Screening Elements are shown in MAGENTA		Existing Copper Cable									W	W	Water	
All Recoveries are shown in GREEN		Existing Screen Cable												

Notes

B	30/11/10	Stage 2 Design - First Issue Redrafted from NTPOSLD24102411001A.dwg	AB	JW	CT
A	20/05/08	Final Issue	MT	DH	SW
DA	28/04/08	First Issue	MT	DH	SW
Rev	Date	Description of Revisions	Drawn	Chkd	Appr

Contractor(s)

Unit 4 Apex Park, Wainwright Road, Worcester, Worcestershire, WR4 9FN. Tel: 01905 756000

Status: **Design**

Scale(s): NTS

ELR & Mileage: AAV

Designed	NDC Consultants	Sign.	Date	30/11/10
Drawn	Adam Bourne	Sign.	Date	30/11/10
Checked	Joe Winter	Sign.	Date	30/11/10
Approved	Chris Tappenden	Sign.	Date	30/11/10
Project	FTN / GSM-R Project Stage 2 Design			
Drawing Title	Bagshot Tunnel (2410) to Camberley Station (2411)			

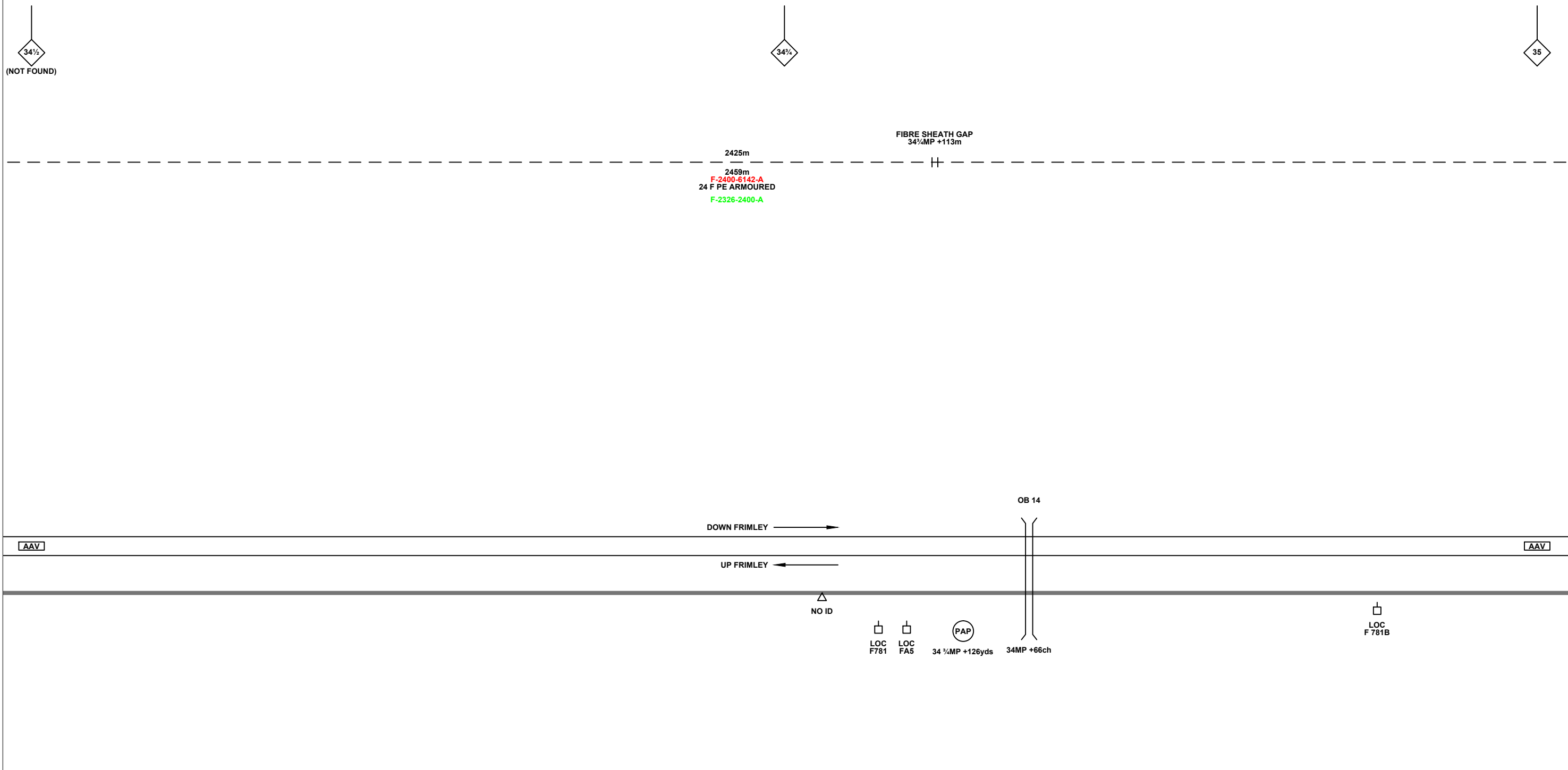
FTN/GSM-R Project
Tournament House
Paddington
London
W2 1HA

Alternative Reference: See Layout Tab 841 x 297 Sheet 1

Drawing Number: NTPO\SLD\2410\2411\001

Sheet: 2 of 7

Revision: B



Legend

Cabinet and Verts	Copper Joint	Trough Duct Cable Tray	Signal Box	FTN Core Node	Screen Joint Routeworks	Overbridge	Signal	Engineer's Line Reference	Crossing	Gas Line
Cabinet with Regenerator and Verts	Fibre Joint	Cable - Type Identified by FTN Code	Electrical Control Room	Core Node with GSM-R Colocated	Copper Joint Routeworks	Manhole	Vehicle Access Point	Mile Post	HV Cable	LV Cable
KEY	Screening Conductor Joint with/without Earth	Status - as per Key Below	Mid Length Sheath Gap Fibre	FTN Access Node	Cabinet Routeworks	Sheath Gap Copper	Pedestrian Access Point	Platform	Sewer	Telecoms
Proposed Fibre & Cables Elements are shown in RED		All Existing Elements are shown in BLACK	Tunnel	FTN Access Node with GSM-R Colocated	Fibre Joint Routeworks	Earth Farm	Buffer Stop	Telephone	Water	AC Stanchion
Proposed Copper Elements are shown in BLUE		Existing Fibre Cable	Manhole details: Cross-To be used Filled-In use Clear-Empty							
Proposed Screening Elements are shown in MAGENTA		Existing Copper Cable								
All Recoveries are shown in GREEN		Existing Screen Cable								

Notes

B	30/11/10	Stage 2 Design - First Issue Redrafted from NTPOSLD24102411001A.dwg	AB	JW	CT
A	20/05/08	Final Issue	MT	DH	SW
DA	28/04/08	First Issue	MT	DH	SW
Rev	Date	Description of Revisions	Drawn	Chkd	Appr

Contractor(s)

Unit 4 Apex Park, Wainwright Road, Worcester, Worcestershire, WR4 9FN. Tel: 01905 756000

Status: **Design**

Scale(s): NTS

ELR & Mileage: AAV

Designed	NDC Consultants	Sign.	Date	30/11/10
Drawn	Adam Bourne	Sign.	Date	30/11/10
Checked	Joe Winter	Sign.	Date	30/11/10
Approved	Chris Tappenden	Sign.	Date	30/11/10
Project	FTN / GSM-R Project Stage 2 Design			
Drawing Title	Bagshot Tunnel (2410) to Camberley Station (2411)			

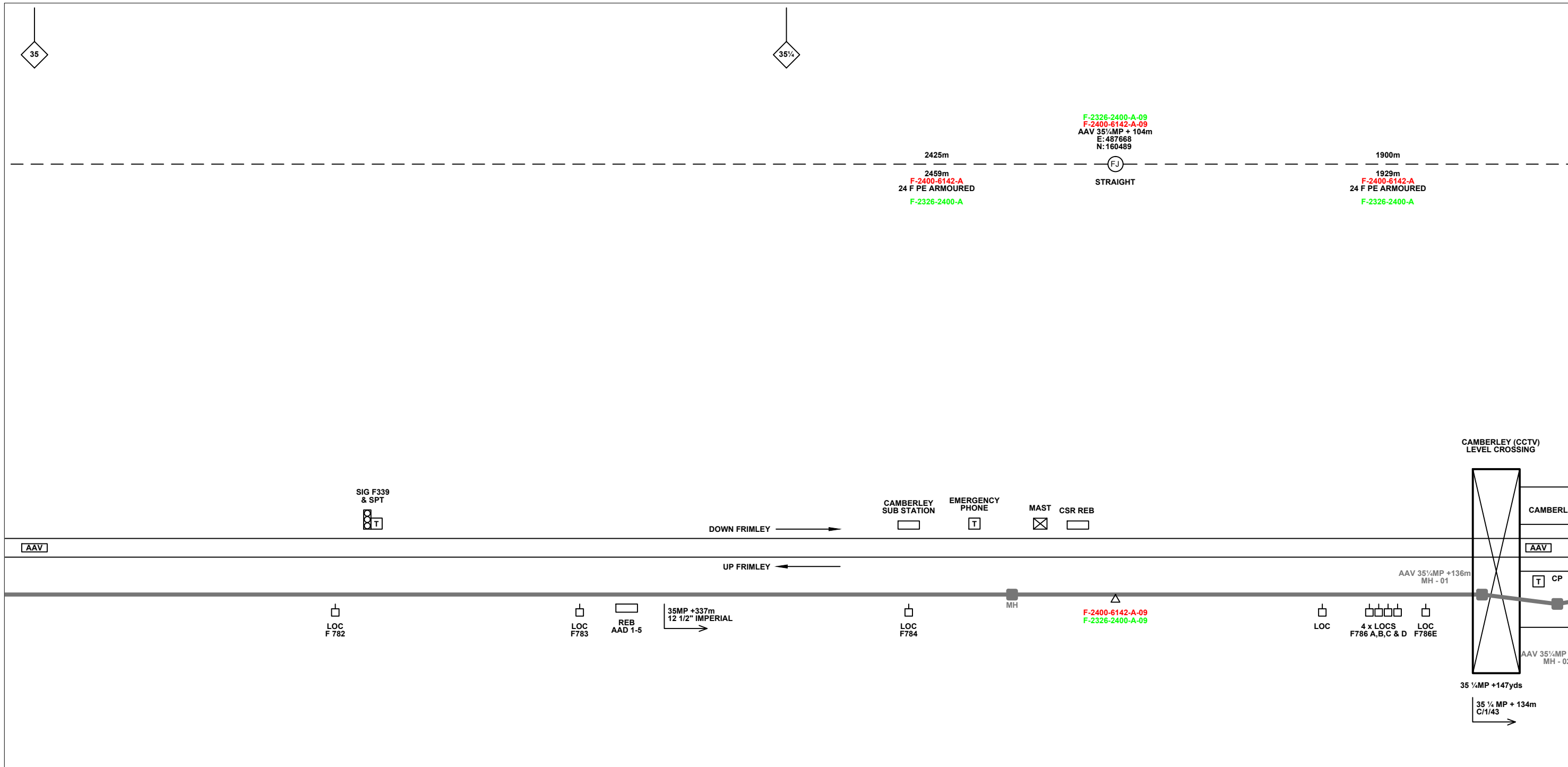
FTN/GSM-R Project
Tournament House
Paddington
London
W2 1HA

Alternative Reference: See Layout Tab 841 x 297 Sheet 2

Drawing Number: NTPO\SLD\2410\2411\001

Sheet: 3 of 7

Revision: B



Legend

Cabinet and Verts	Copper Joint	Trough Duct Cable Tray	Signal Box	FTN Core Node	Screen Joint Routeworks	Overbridge	Signal	Engineer's Line Reference	Crossing	Gas Line
Cabinet with Regenerator and Verts	Fibre Joint	Cable - Type Identified by FTN Code	Electrical Control Room	Core Node with GSM-R Colocated	Copper Joint Routeworks	Underbridge	Vehicle Access Point	Mile Post	HV Cable	HV Cable
KEY	Screening Conductor Joint with/without Earth	Status - as per Key Below	Manhole	FTN Access Node	Cabinet Routeworks	Manhole details: Cross-To be used Filled-In use Clear-Empty	Pedestrian Access Point	Platform	LV Cable	LV Cable
Proposed Fibre & Civils Elements are shown in RED	Existing Fibre Cable	Existing Copper Cable	Mid Length Sheath Gap Fibre	FTN Access Node with GSM-R Colocated	Fibre Joint Routeworks	Tunnel	Earth Farm	Buffer Stop	Sewer	Sewer
Proposed Copper Elements are shown in BLUE	Existing Screen Cable	Sheath Gap Copper	Sheath Gap Copper	FTN Core Node	Gantry	Manhole details: Cross-To be used Filled-In use Clear-Empty	Cable Pull	Telephone	Telecoms	Telecoms
Proposed Screening Elements are shown in MAGENTA									Water	Water
All Recoveries are shown in GREEN									AC Stanchion	AC Stanchion

Rev	Date	Description of Revisions	Drawn	Chkd	Appr
B	30/11/10	Stage 2 Design - First Issue Redrafted from NTPOSLD24102411001A.dwg	AB	JW	CT
A	20/05/08	Final Issue	MT	DH	SW
DA	28/04/08	First Issue	MT	DH	SW

Contractor(s)

Unit 4 Apex Park, Wainwright Road, Worcester, Worcestershire, WR4 9FN. Tel: 01905 756000

Status: **Design**

Scale(s): NTS, AAV

Designed	NDC Consultants	Sign.	Date	30/11/10
Drawn	Adam Bourne	Sign.	Date	30/11/10
Checked	Joe Winter	Sign.	Date	30/11/10
Approved	Chris Tappenden	Sign.	Date	30/11/10
Project	FTN / GSM-R Project Stage 2 Design			
Drawing Title	Bagshot Tunnel (2410) to Camberley Station (2411)			

FTN/GSM-R Project
Tournament House
Paddington
London
W2 1HA

Alternative Reference: See Layout Tab 841 x 297 Sheet 2

Drawing Number: NTPO\SLD\2410\2411\001

Sheet: 4 of 7

Revision: B

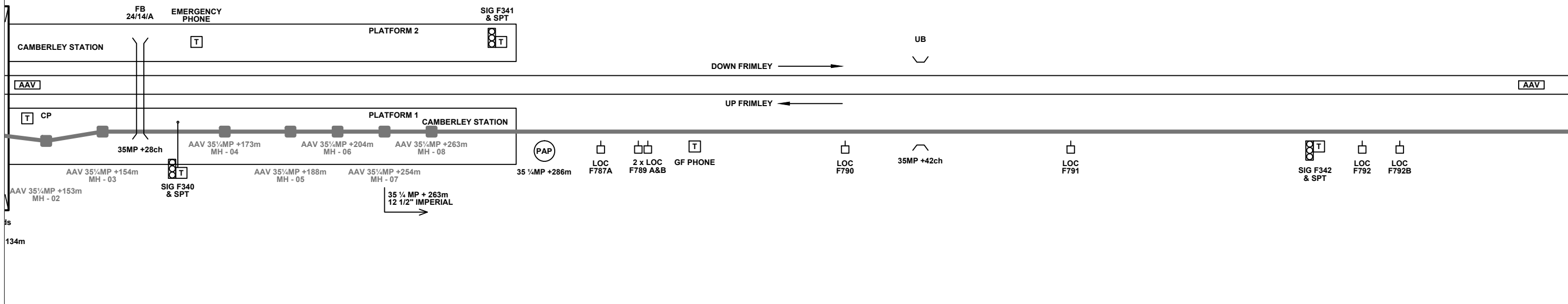
35%

35%

1900m

1929m
F-2400-5142-A
24 F PE ARMoured
F-2326-2400-A

CCTV) SING



Legend

Cabinet and Verts	Copper Joint	Trough Duct Cable Tray	Signal Box	FTN Core Node	Screen Joint Routeworks	Overbridge	Signal	Engineer's Line Reference	Crossing	GAS — GAS — Gas Line
Cabinet with Regenerator and Verts	Fibre Joint	Cable - Type Identified by FTN Code	Electrical Control Room	Core Node with GSM-R Colocated	Copper Joint Routeworks	Underbridge	Vehicle Access Point	Mile Post	HV — HV — HV Cable	LV — LV — LV Cable
KEY	Screening Conductor Joint with/without Earth	Status - as per Key Below	Manhole	FTN Access Node	Cabinet Routeworks	Manhole details: Cross-To be used, Filled-In use, Clear-Empty	Pedestrian Access Point	Platform	SEW — SEW — Sewer	TEL — TEL — Telecoms
Proposed Fibre & Civils Elements are shown in RED		All Existing Elements are shown in BLACK	Mid Length Sheath Gap Fibre	FTN Access Node with GSM-R Colocated	Fibre Joint Routeworks	Tunnel	Earth Farm	Buffer Stop	W — W — Water	AC Stanchion
Proposed Copper Elements are shown in BLUE		Existing Fibre Cable	Sheath Gap Copper						Cable Pull	Copper Blue Fibre Red Screen Green
Proposed Screening Elements are shown in MAGENTA		Existing Copper Cable								
All Recoveries are shown in GREEN		Existing Screen Cable								

Notes

Rev	Date	Description of Revisions	Drawn	Chkd	Appr
B	30/11/10	Stage 2 Design - First Issue Redrafted from NTPOSLD24102411001A.dwg	AB	JW	CT
A	20/05/08	Final Issue	MT	DH	SW
DA	28/04/08	First Issue	MT	DH	SW

Contractor(s)

Unit 4 Apex Park, Wainwright Road, Worcester, Worcestershire, WR4 9FN. Tel: 01905 756000

Status: **Design**

Scale(s): NTS

ELR & Mileage: AAV

Designed	NDC Consultants	Sign.	Date	30/11/10
Drawn	Adam Bourne	Sign.	Date	30/11/10
Checked	Joe Winter	Sign.	Date	30/11/10
Approved	Chris Tappenden	Sign.	Date	30/11/10
Project	FTN / GSM-R Project Stage 2 Design			
Drawing Title	Bagshot Tunnel (2410) to Camberley Station (2411)			

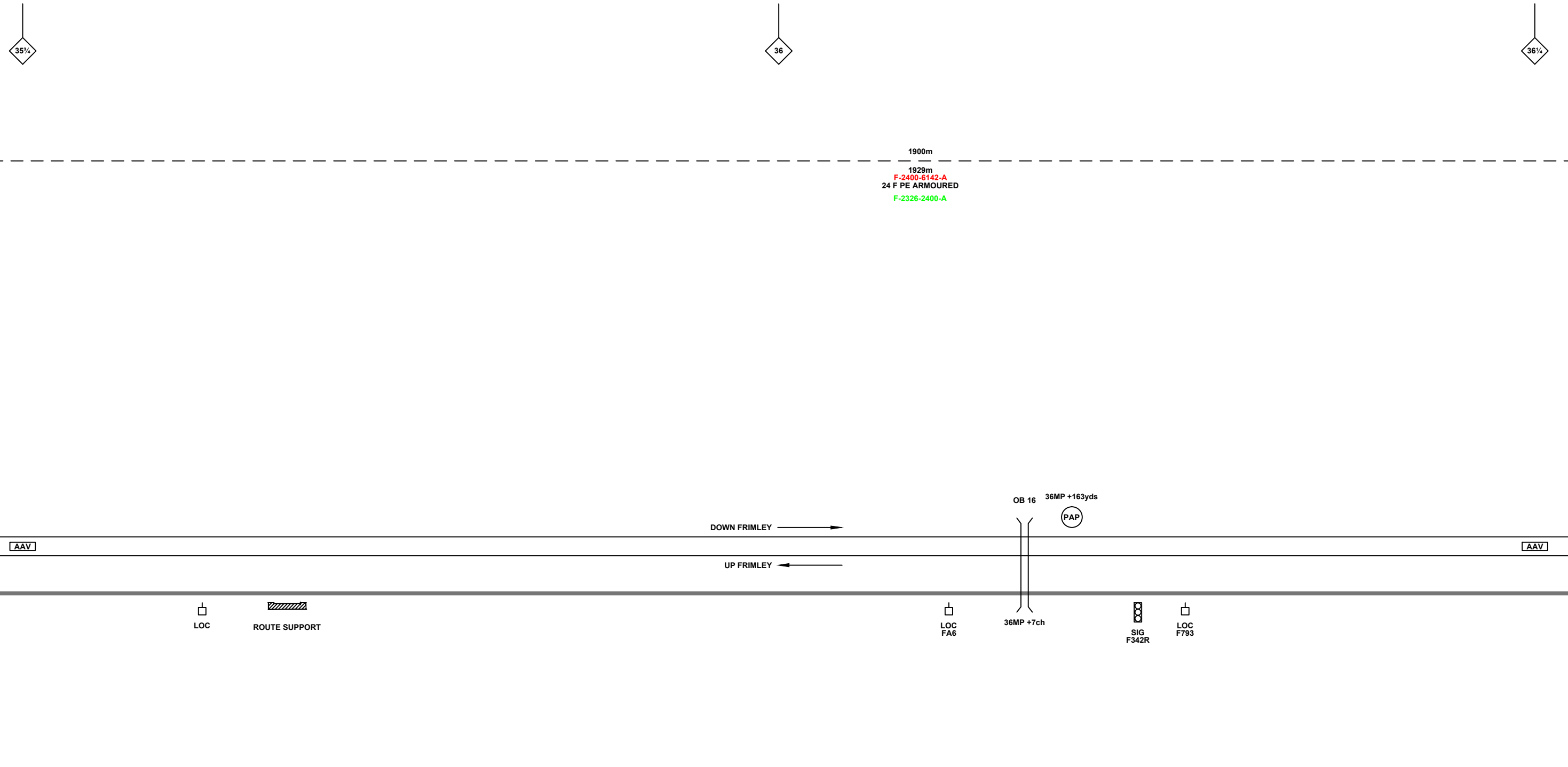
FTN/GSM-R Project
Tournament House
Paddington
London
W2 1HA

Alternative Reference: See Layout Tab 841 x 297 Sheet 3

Drawing Number: NTPO\SLD\2410\2411\001

Sheet: 5 of 7

Revision: B



Legend

Cabinet and Verts	Copper Joint	Trough Duct Cable Tray	Signal Box	FTN Core Node	Screen Joint Routeworks	Overbridge	Signal	Engineer's Line Reference	Crossing	GAS — GAS — Gas Line
Cabinet with Regenerator and Verts	Fibre Joint	Cable - Type Identified by FTN Code	Electrical Control Room	Core Node with GSM-R Colocated	Copper Joint Routeworks	Underbridge	Vehicle Access Point	Mile Post	Gantry	HV — HV — HV Cable
KEY	Screening Conductor Joint with/without Earth	Status - as per Key Below	Manhole	FTN Access Node	Cabinet Routeworks	Manhole details: Cross-To be used Filled-In use Clear-Empty	Pedestrian Access Point	Platform	SEW — SEW — Sewer	TEL — TEL — Telecoms
Proposed Fibre & Cables Elements are shown in RED		All Existing Elements are shown in BLACK	Mid Length Sheath Gap Fibre	FTN Access Node with GSM-R Colocated	Fibre Joint Routeworks	Tunnel	Earth Farm	Telephone	W — W — Water	AC Stanchion
Proposed Copper Elements are shown in BLUE		Existing Fibre Cable	Sheath Gap Copper				Buffer Stop		Cable Pull	Copper Blue Fibre Red Screen Green
Proposed Screening Elements are shown in MAGENTA		Existing Copper Cable								
All Recoveries are shown in GREEN		Existing Screen Cable								

Notes

B	30/11/10	Stage 2 Design - First Issue Redrafted from NTPOSLD24102411001A.dwg	AB	JW	CT
A	20/05/08	Final Issue	MT	DH	SW
DA	28/04/08	First Issue	MT	DH	SW
Rev	Date	Description of Revisions	Drawn	Chkd	Appr

Contractor(s)

Unit 4 Apex Park, Wainwright Road, Worcester, Worcestershire, WR4 9FN. Tel: 01905 756000

Status: **Design**

Scale(s): NTS

ELR & Mileage: AAV

Designed	NDC Consultants	Sign.	Date	30/11/10
Drawn	Adam Bourne	Sign.	Date	30/11/10
Checked	Joe Winter	Sign.	Date	30/11/10
Approved	Chris Tappenden	Sign.	Date	30/11/10
Project	FTN / GSM-R Project Stage 2 Design			
Drawing Title	Bagshot Tunnel (2410) to Camberley Station (2411)			

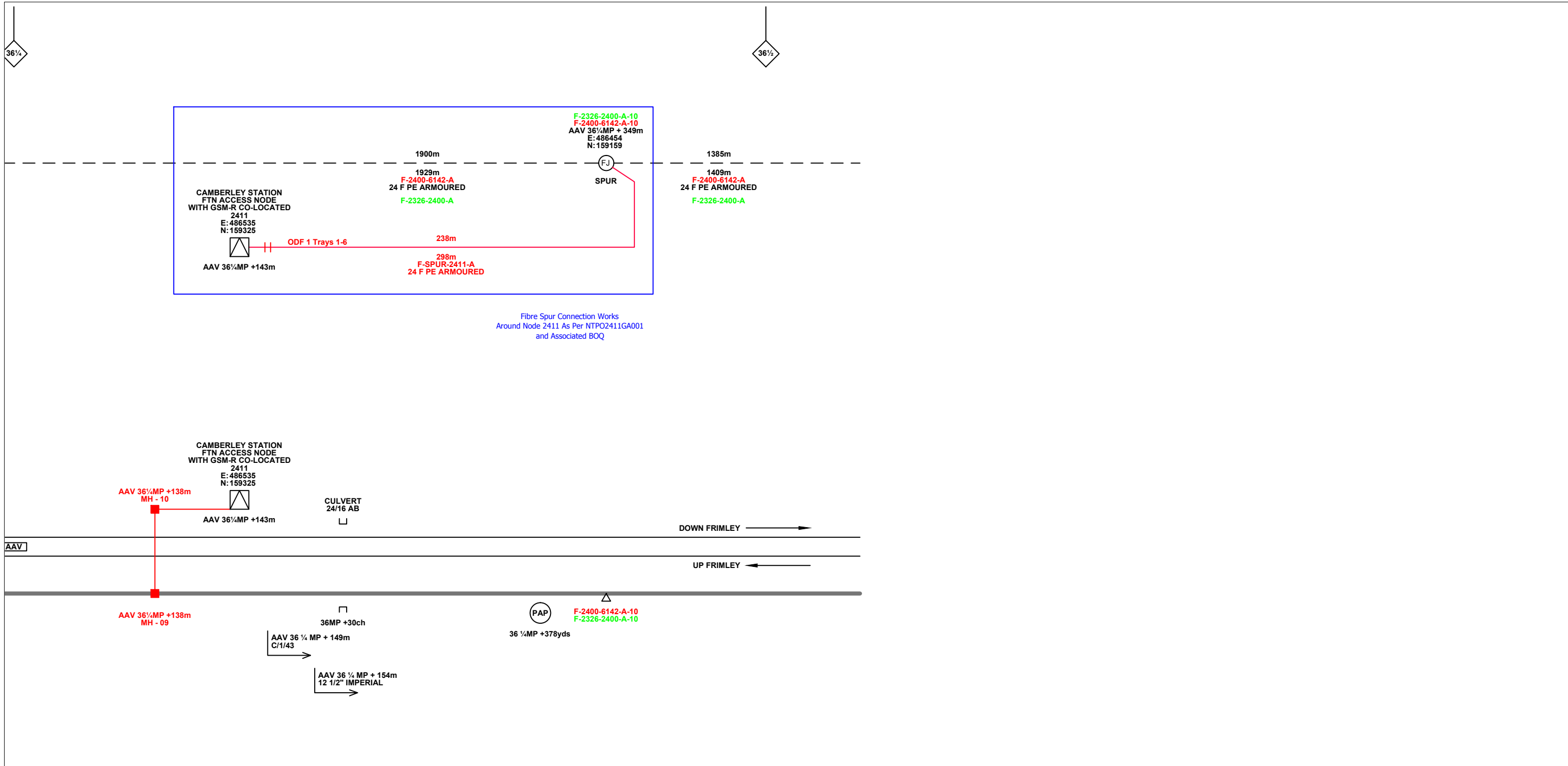
FTN/GSM-R Project
Tournament House
Paddington
London
W2 1HA

Alternative Reference: See Layout Tab 841 x 297 Sheet 3

Drawing Number: NTPO\SLD\2410\2411\001

Revision: **B**

Sheet 6 of 7



Legend

Cabinet and Verts	Copper Joint	Signal Box	FTN Core Node	Screen Joint Routeworks	Overbridge	Signal	Engineer's Line Reference	Crossing	GAS — GAS — Gas Line
Cabinet with Regenerator and Verts	Fibre Joint	Electrical Control Room	Core Node with GSM-R Colocated	Copper Joint Routeworks	Underbridge	Vehicle Access Point	Mile Post	Gantry	HV — HV — HV Cable
KEY	Screening Conductor Joint with/without Earth	Manhole	FTN Access Node	Cabinet Routeworks	Manhole details: Cross-To be used Filled-In use Clear-Empty	Pedestrian Access Point	Platform	SEW — SEW — Sewer	LV — LV — LV Cable
Proposed Fibre & Cables Elements are shown in RED		Mid Length Sheath Gap Fibre	FTN Access Node with GSM-R Colocated	Fibre Joint Routeworks	Tunnel	Earth Farm	Telephone	TEL — TEL — Telecoms	W — W — Water
Proposed Copper Elements are shown in BLUE		Sheath Gap Copper				Buffer Stop		Cable Pull	AC Stanchion
Proposed Screening Elements are shown in MAGENTA									
All Recoveries are shown in GREEN									

All Existing Elements are shown in BLACK

1988m Cable - Type Identified by FTN Code Status - as per Key Below

2034m F-DIDC-RGAC-A

Notes

B	30/11/10	Stage 2 Design - First Issue Redrafted from NTPOSLD24102411001A.dwg	AB	JW	CT
A	20/05/08	Final Issue	MT	DH	SW
DA	28/04/08	First Issue	MT	DH	SW
Rev	Date	Description of Revisions	Drawn	Chkd	Appr

Contractor(s)

ndcconsultants

Unit 4 Apex Park, Wainwright Road, Worcester, Worcestershire, WR4 9FN. Tel: 01905 756000

Status: **Design**

Scale(s): NTS, AAV

Designed	NDC Consultants	Sign.	Date	30/11/10
Drawn	Adam Bourne	Sign.	Date	30/11/10
Checked	Joe Winter	Sign.	Date	30/11/10
Approved	Chris Tappenden	Sign.	Date	30/11/10
Project	FTN / GSM-R Project Stage 2 Design			
Drawing Title	Bagshot Tunnel (2410) to Camberley Station (2411)			

Network Rail

FTN/GSM-R Project
Tournament House
Paddington
London
W2 1HA

Alternative Reference: See Layout Tab 841 x 297 Sheet 4

Drawing Number: NTPO\SLD\2410\2411\001

Sheet: 7 of 7

Revision: B