

Legend

	Cabinet and Verts		Copper Joint		Trough Duct Cable Tray		Signal Box		FTN Core Node		Screen Joint Routeworks		Manhole details: Cross-To be used Filled-In use Clear-Empty																
	Cabinet with Regenerator and Verts		Fibre Joint		Electrical Control Room		Manhole		Core Node with GSM-R Colocated		Copper Joint Routeworks		Tunnel																
KEY	Proposed Fibre & Civils Elements are shown in RED	Proposed Copper Elements are shown in BLUE	Proposed Screening Elements are shown in MAGENTA	All Existing Elements are shown in BLACK	Existing Fibre Cable	Existing Copper Cable	Existing Screen Cable	Manhole	FTN Access Node	FTN Access Node with GSM-R Colocated	Cabinet Routeworks	Fibre Joint Routeworks	Overbridge	Signal	Engineer's Line Reference	Mile Post	Platform	Telephone	Fence	Gas Line	HV Cable	LV Cable	Sewer	Telecoms	Water	Copper Blue	Fibre Red	Screen Green	AC Stanchion

Notes

B	23/11/10	Added All Terminations at Node 2300	JU	AC	CT
A	13/04/10	First Issue	AC	MC	CT
Rev	Date	Description of Revisions	Drawn	Chkd	Appr

Connector(s)

Status Design

Scale(s) ELR & Mileage NTS

Designed	Aimee Cater	Sign.		Date	13/04/10
Drawn	Aimee Cater	Sign.		Date	13/04/10
Checked	Matthew Cleaver	Sign.		Date	13/04/10
Approved	Chris Tappenden	Sign.		Date	13/04/10

Project FTN / GSM-R Project Guildford to Redhill

Drawing Title Effingham Junction (2300) to Horsley Station (2301)

Alternative Reference See Layout Tab A3 Sheets 1 and 2

Drawing Number NTPO\SLD\2300\2301\001

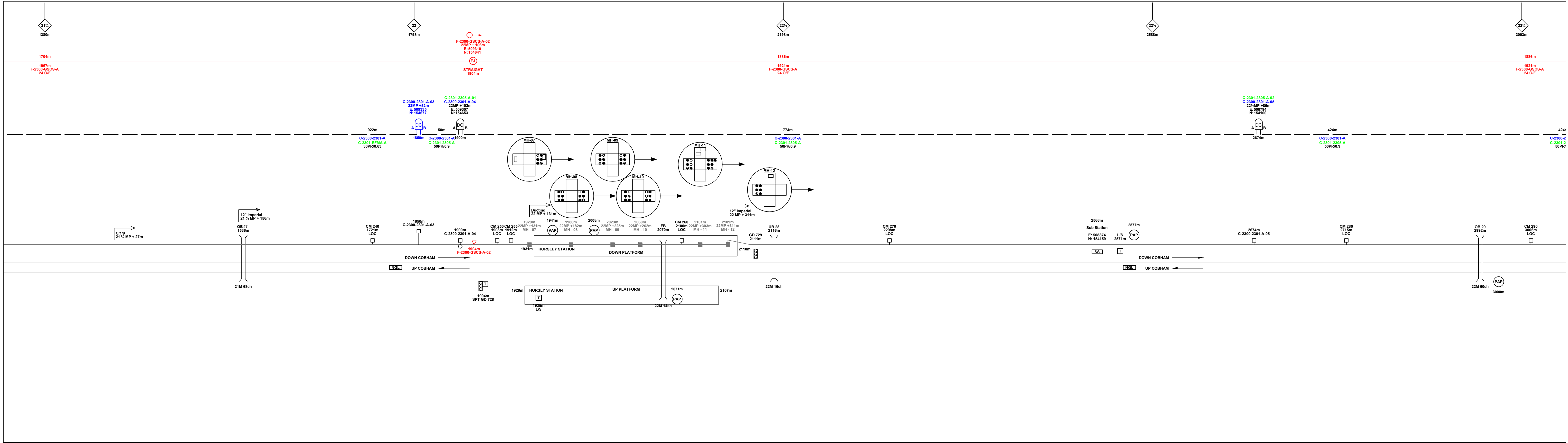
Sheet 1 of 4

Revision B

Network Rail

FTN/GSM-R Project
Tournament House
Paddington
London
W2 1HA

Sheet Size 841x297



Legend

- Cabinet and Verts:** DC B, DC A
- Cabinet with Regenerator and Verts:** DC B, DC A
- Copper Joint:** (CJ)
- Fibre Joint:** (FJ)
- Screening Conductor Joint with/without Earth:** (SJ)
- Cable - Type Identified by FTN Code:** 1988m, 2034m F-DIC-RGAC-A
- Manhole:** (M)
- Mid Length Sheath Gap Fibre:** (||)
- Sheath Gap Copper:** (||)
- Electrical Control Room:** (ECR)
- Manhole:** (M)
- FTN Access Node:** (AN)
- FTN Access Node with GSM-R Colocated:** (AN)
- FTN Core Node:** (CN)
- Core Node with GSM-R Colocated:** (CN)
- Screen Joint Routeworks:** (S)
- Copper Joint Routeworks:** (C)
- Cabinet Routeworks:** (R)
- Fibre Joint Routeworks:** (F)
- Manhole details:** Cross-To be used, Filled-In use, Clear-Empty
- Tunnel:** (T)
- Overbridge:** (O)
- Underbridge:** (U)
- Earth Farm:** (EF)
- Signal:** (S)
- Vehicle Access Point:** (VAP)
- Engineer's Line Reference:** (ELR)
- Mile Post:** (MP)
- Platform:** (P)
- Telephone:** (T)
- Buffer Stop:** (BS)
- Fence:** Gas Line, HV Cable, LV Cable, Sewer, Telecoms, Water
- Crossing:** (C)
- Gantry:** (G)
- Cable Pull:** (CP)
- AC Stanchion:** (AS)

KEY

- Proposed Fibre & Civils Elements are shown in RED
- Proposed Copper Elements are shown in BLUE
- Proposed Screening Elements are shown in MAGENTA
- All Recoveries are shown in GREEN
- All Existing Elements are shown in BLACK
- Existing Fibre Cable
- Existing Copper Cable
- Existing Screen Cable

Notes

B	23/11/10	Added All Terminations at Node 2300	JU	AC	CT
A	13/04/10	First Issue	AC	MC	CT
Rev	Date	Description of Revisions	Drawn	Chkd	Appr

Contractor(s)

Status

Design

ELR & Mileage
LEJ / NGL

Designed	Aimee Cater	Sign.	<i>Aimee</i>	Date	13/04/10
Drawn	Aimee Cater	Sign.	<i>Aimee</i>	Date	13/04/10
Checked	Matthew Cleaver	Sign.	<i>M Cleaver</i>	Date	13/04/10
Approved	Chris Tappenden	Sign.	<i>C Tappenden</i>	Date	13/04/10

Project

FTN / GSM-R Project
Guildford to Redhill

Drawing Title

Effingham Junction (2300)
to Horsley Station (2301)

Network Rail

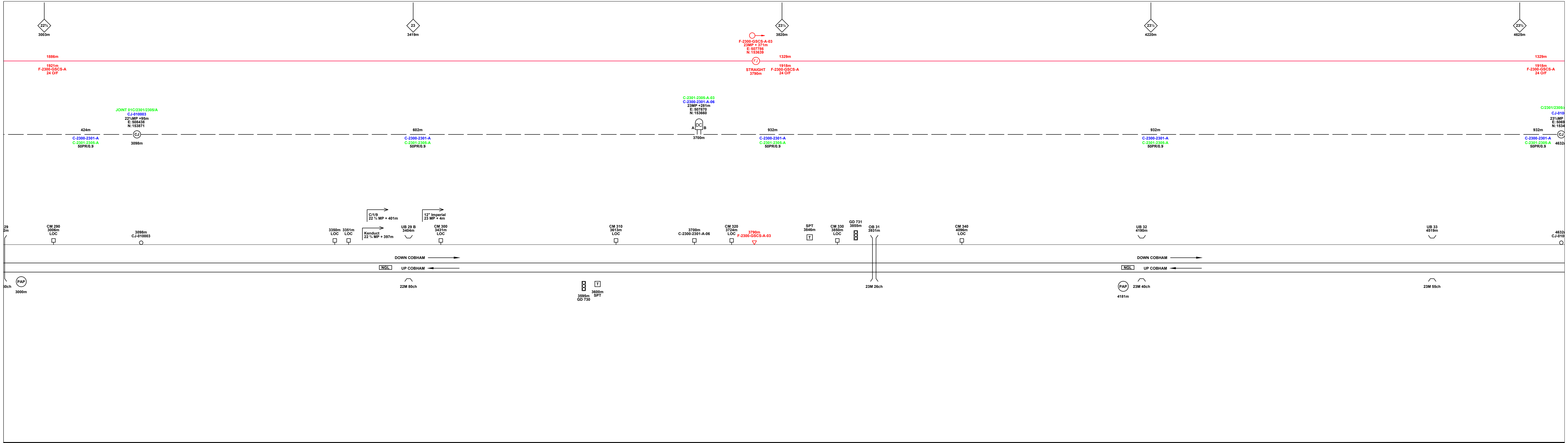
FTN/GSM-R Project
Tournament House
Paxford
Letchworth
WZ 1HA

Alternative Reference: See Layout Tab A3 Sheets 3 and 4

Drawing Number: NTPO\SLD\2300\2301\001

Sheet 2 of 4
Revision B

Sheet Size 841x297



Legend

Cabinet and Verts	Copper Joint	Trough Duct Cable Tray	Signal Box	FTN Core Node	Screen Joint Routeworks	Manhole	Overbridge	Signal	Engineer's Line Reference	Fence
Cabinet with Regenerator and Verts	Fibre Joint	Cable - Type Identified by FTN Code	Electrical Control Room	Core Node with GSM-R Colocated	Copper Joint Routeworks	Mid Length Sheath Gap Fibre	Underbridge	VAP Access Point	Mile Post	Gas Line
KEY	Screening Conductor Joint with/without Earth	Status - as per Key Below	Manhole	FTN Access Node	Cabinet Routeworks	Sheath Gap Copper	Tunnel	Pedestrian Access Point	Platform	HV Cable
Proposed Fibre & Civils Elements are shown in RED	Existing Fibre Cable	Existing Copper Cable	Manhole	FTN Access Node with GSM-R Colocated	Fibre Joint Routeworks	Manhole	Manhole details: Cross-To be used Filled-In use Clear-Empty	PAP Access Point	Telephone	LV Cable
Proposed Copper Elements are shown in BLUE	Existing Screen Cable	Manhole	Manhole	Manhole	Manhole	Manhole	Manhole	Manhole	Telephone	Sewer
Proposed Screening Elements are shown in MAGENTA	Manhole	Manhole	Manhole	Manhole	Manhole	Manhole	Manhole	Manhole	Telephone	Telecoms
All Recoveries are shown in GREEN	Manhole	Manhole	Manhole	Manhole	Manhole	Manhole	Manhole	Manhole	Telephone	Water

Notes

Contractor(s)

--

Status

Design

ELR & Mileage

LEJ / NGL

Designed	Aimee Cater	Sign.		Date	13/04/10
Drawn	Aimee Cater	Sign.		Date	13/04/10
Checked	Matthew Cleaver	Sign.		Date	13/04/10
Approved	Chris Tappenden	Sign.		Date	13/04/10

Project

FTN / GSM-R Project
Guildford to Redhill

Drawing Title

Effingham Junction (2300)
to Horsley Station (2301)

FTN/GSM-R Project
Tournament House
Paddington
London
W2 1HA

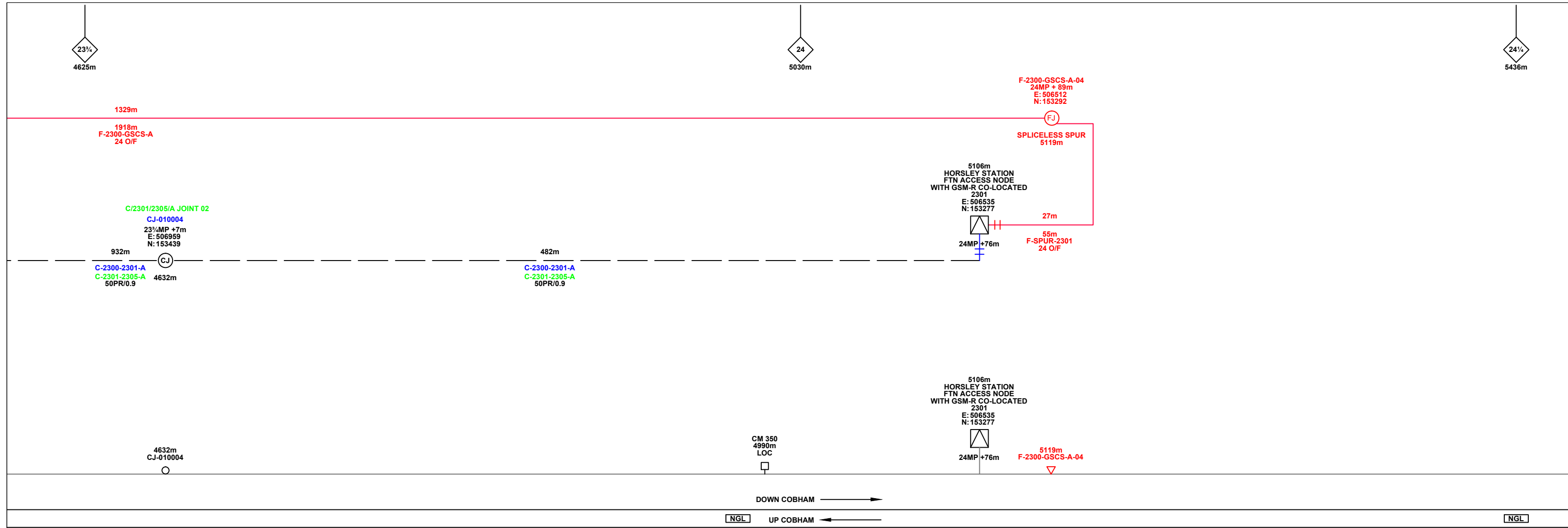
Alternative Reference: See Layout Tab A3 Sheets 5 and 6

Drawing Number: NTP0\SLD\2300\2301\001

Sheet 3 of 4

Revision B

Sheet Size 841x297



Legend

Cabinet and Verts	Copper Joint	Trough Duct Cable Tray	Signal Box	FTN Core Node	Screen Joint Routeworks	Manhole	Overbridge	Signal	Engineer's Line Reference	Fence
Cabinet with Regenerator and Verts	Fibre Joint	Cable - Type Identified by FTN Code	Electrical Control Room	Core Node with GSM-R Colocated	Copper Joint Routeworks	Mid Length Sheath Gap Fibre	Underbridge	VAP Access Point	Mile Post	Gas Line
KEY	Screening Conductor Joint with/without Earth	Status - as per Key Below	Manhole	FTN Access Node	Cabinet Routeworks	Sheath Gap Copper	Tunnel	PAP Pedestrian Access Point	Platform	HV Cable
Proposed Fibre & Civils Elements are shown in RED	F-DIDC-RGAC-A	Existing Fibre Cable	Manhole	FTN Access Node with GSM-R Colocated	Fibre Joint Routeworks	Earth Farm	Buffer Stop	Telephone	Cable Pull	LV Cable
Proposed Copper Elements are shown in BLUE	Existing Copper Cable	Existing Screen Cable	Manhole	Manhole	Manhole	Earth Farm	Buffer Stop	Telephone	Cable Pull	Sewer
Proposed Screening Elements are shown in MAGENTA	Existing Screen Cable	Existing Screen Cable	Manhole	Manhole	Manhole	Earth Farm	Buffer Stop	Telephone	Cable Pull	Telecoms
All Recoveries are shown in GREEN	Existing Screen Cable	Existing Screen Cable	Manhole	Manhole	Manhole	Earth Farm	Buffer Stop	Telephone	Cable Pull	Water

Notes

Rev	Date	Description of Revisions	Drawn	Chkd	Appr
B	23/11/10	Added All Terminations at Node 2300		JU	AC CT
A	13/04/10	First Issue		AC	MC CT

Contractor(s)

Status: **Design**

Scale(s): NTS

ELR & Mileage: LEJ / NGL

Designed	Aimee Cater	Sign.		Date	13/04/10
Drawn	Aimee Cater	Sign.		Date	13/04/10
Checked	Matthew Cleaver	Sign.		Date	13/04/10
Approved	Chris Tappenden	Sign.		Date	13/04/10

Project: FTN / GSM-R Project Guildford to Redhill

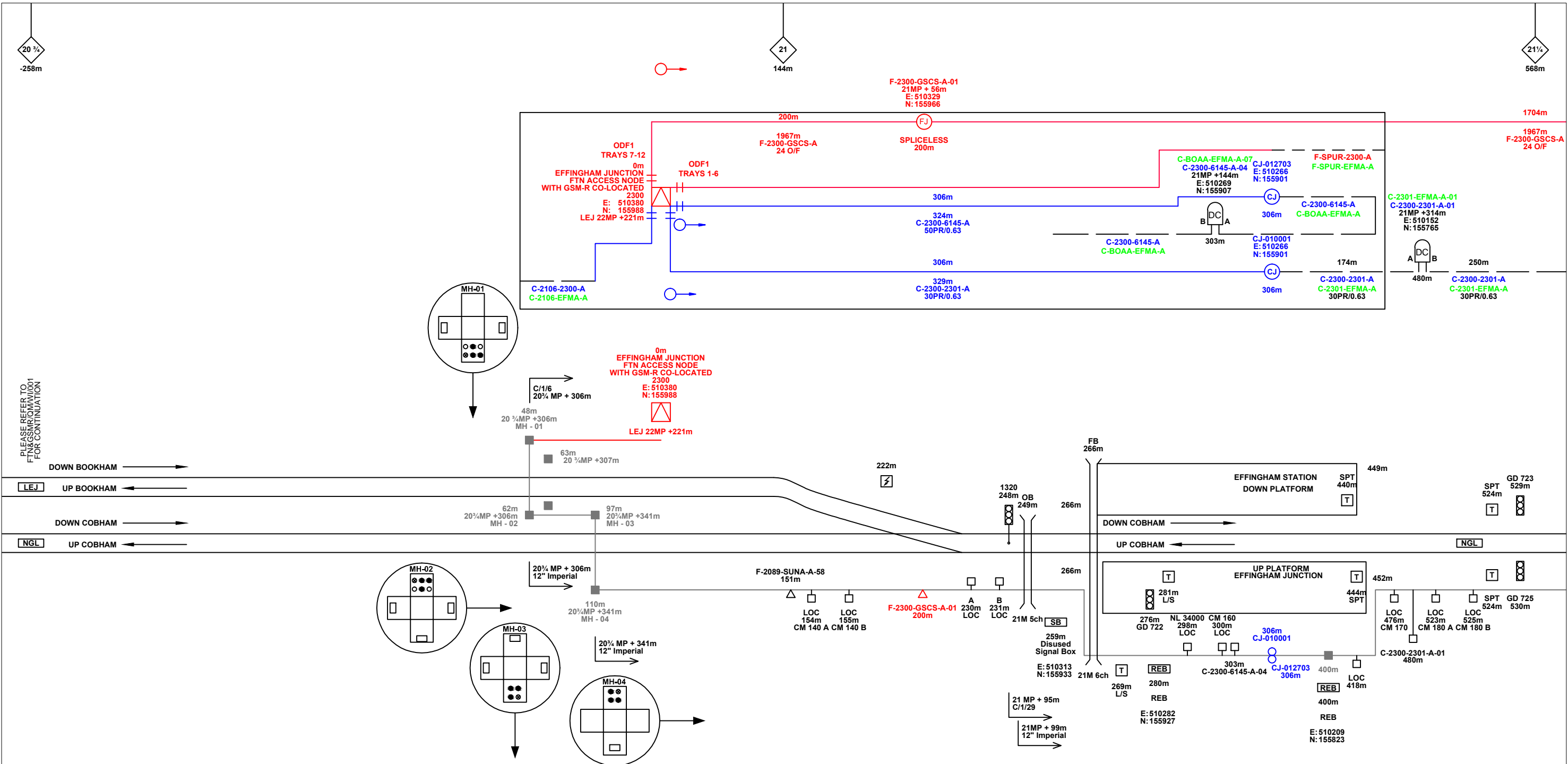
Drawing Title: Effingham Junction (2300) to Horsley Station (2301)

FTN/GSM-R Project
Tournament House
Paddington
W2 1HA

Alternative Reference: See Layout Tab A3 Sheet 7

Drawing Number: NTPO\SLD\2300\2301\001

Sheet: 4 of 4
Revision: B



Legend

	Cabinet and Verts		Copper Joint		Trough Duct Cable Tray		Signal Box		FTN Core Node		Screen Joint Routeworks		Overbridge		Signal		Engineer's Line Reference		Crossing		Gas Line
	Cabinet with Regenerator and Verts		Fibre Joint		Cable - Type Identified by FTN Code		Electrical Control Room		Core Node with GSM-R Colocated		Copper Joint Routeworks		Underbridge		Vehicle Access Point		Mile Post		Gantry		HV Cable
	Proposed Fibre & Civils Elements are shown in RED		Screening Conductor Joint with/without Earth		Manhole		Mid Length Sheath Gap Fibre		FTN Access Node		Cabinet Routeworks		Tunnel		Pedestrian Access Point		Platform		Sewer		LV Cable
	Proposed Copper Elements are shown in BLUE		Existing Fibre Cable		Manhole		Sheath Gap Copper		FTN Access Node with GSM-R Colocated		Fibre Joint Routeworks		Earth Farm		Buffer Stop		Telephone		Water		Copper Blue Fibre Red Screen Green
	Proposed Screening Elements are shown in MAGENTA		Existing Copper Cable		Manhole		Existing Screen Cable						AC Stanchion								
	All Recoveries are shown in GREEN																				

Notes

Rev	Date	Description of Revisions	Drawn	Chkd	Appr
B	23/11/10	Added All Terminations at Node 2300	JU	AC	CT
A	13/04/10	First Issue	AC	MC	CT

Contractor(s)

Status: **Design**

Scale(s): NTS

ELR & Mileage: LEJ / NGL

Designed	Aimee Cater	Sign.		Date	13/04/10
Drawn	Aimee Cater	Sign.		Date	13/04/10
Checked	Matthew Cleaver	Sign.		Date	13/04/10
Approved	Chris Tappenden	Sign.		Date	13/04/10

Project: **FTN / GSM-R Project Guildford to Redhill**

Drawing Title: **Effingham Junction (2300) to Horsley Station (2301)**

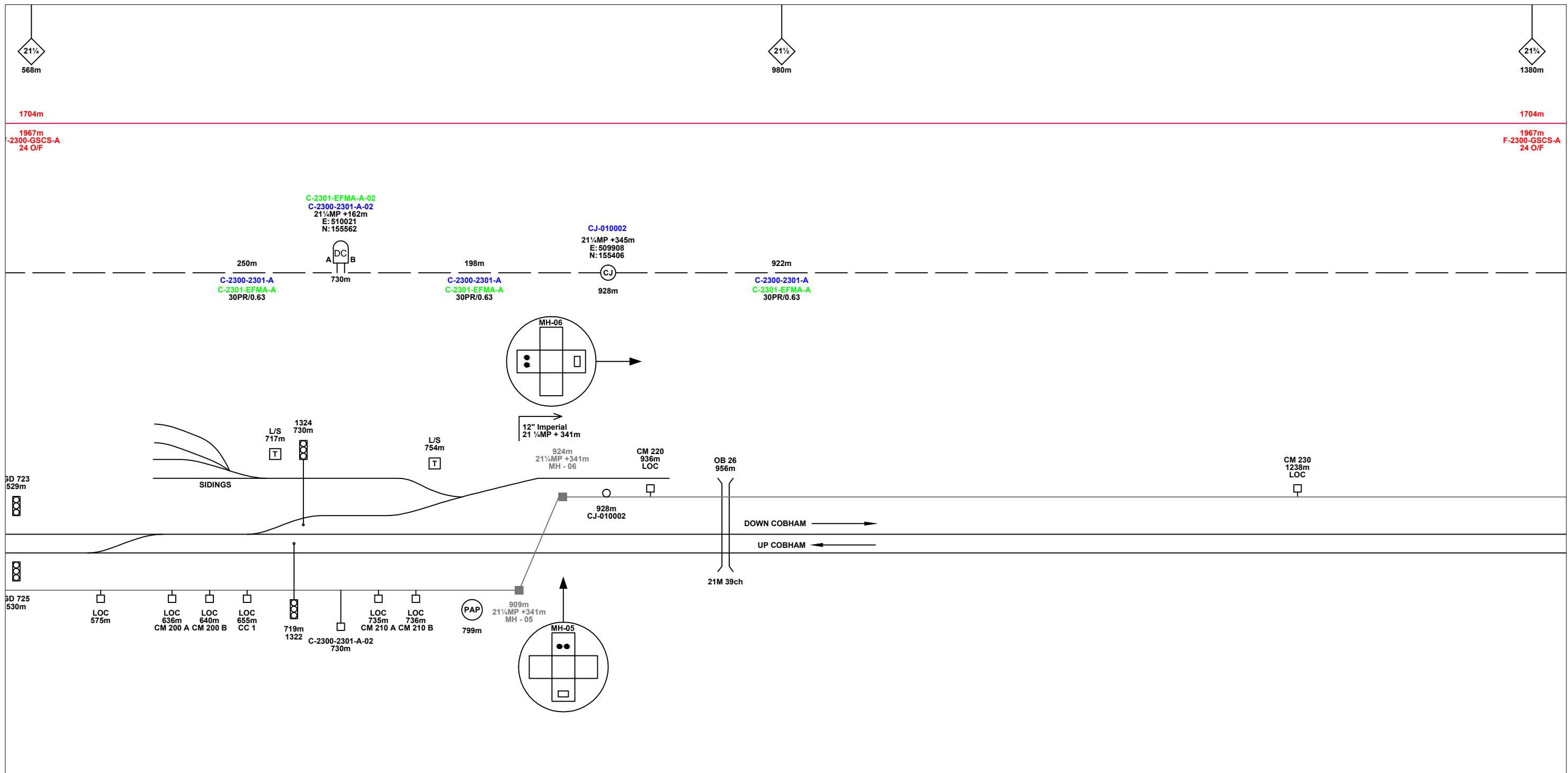
FTN/GSM-R Project
Tournament House
Paddington
London
W2 1HA

Alternative Reference: See Layout Tab 841 x 297 Sheet 1

Drawing Number: **NTPO\SLD\2300\2301\001**

Sheet: **1** of **7**

Revision: **B**



Legend

Cabinet and Verts	Copper Joint	Trough Duct Cable Tray	Signal Box	FTN Core Node	Screen Joint Routeworks	Overbridge	Signal	Engineer's Line Reference	Fence
Cabinet with Regenerator and Verts	Fibre Joint	Cable - Type Identified by FTN Code	Electrical Control Room	Core Node with GSM-R Colocated	Copper Joint Routeworks	Underbridge	Vehicle Access Point	Mile Post	Gas Line
Cabinet with Regenerator and Verts	Screening Conductor Joint with/without Earth	Manhole	Mid Length Sheath Gap Fibre	FTN Access Node	Cabinet Routeworks	Tunnel	Pedestrian Access Point	Platform	HV Cable
KEY		Status - as per Key Below	Sheath Gap Copper	FTN Access Node with GSM-R Colocated	Fibre Joint Routeworks	Earth Farm	Buffer Stop	Telephone	LV Cable
Proposed Fibre & Civils Elements are shown in RED		All Existing Elements are shown in BLACK							Sewer
Proposed Copper Elements are shown in BLUE		Existing Fibre Cable							Telecoms
Proposed Screening Elements are shown in MAGENTA		Existing Copper Cable							Water
All Recoveries are shown in GREEN		Existing Screen Cable							AC Stanchion

Notes

Rev	Date	Description of Revisions	Drawn	Chkd	Appr
B	23/11/10	Added All Terminations at Node 2300	JU	AC	CT
A	13/04/10	First Issue	AC	MC	CT

Contractor(s)

Status: **Design**

Scale(s): NTS

ELR & Mileage: LEJ / NGL

Designed	Aimee Cater	Sign.		Date	13/04/10
Drawn	Aimee Cater	Sign.		Date	13/04/10
Checked	Matthew Cleaver	Sign.		Date	13/04/10
Approved	Chris Tappenden	Sign.		Date	13/04/10
Project: FTN / GSM-R Project Guildford to Redhill					
Drawing Title: Effingham Junction (2300) to Horsley Station (2301)					

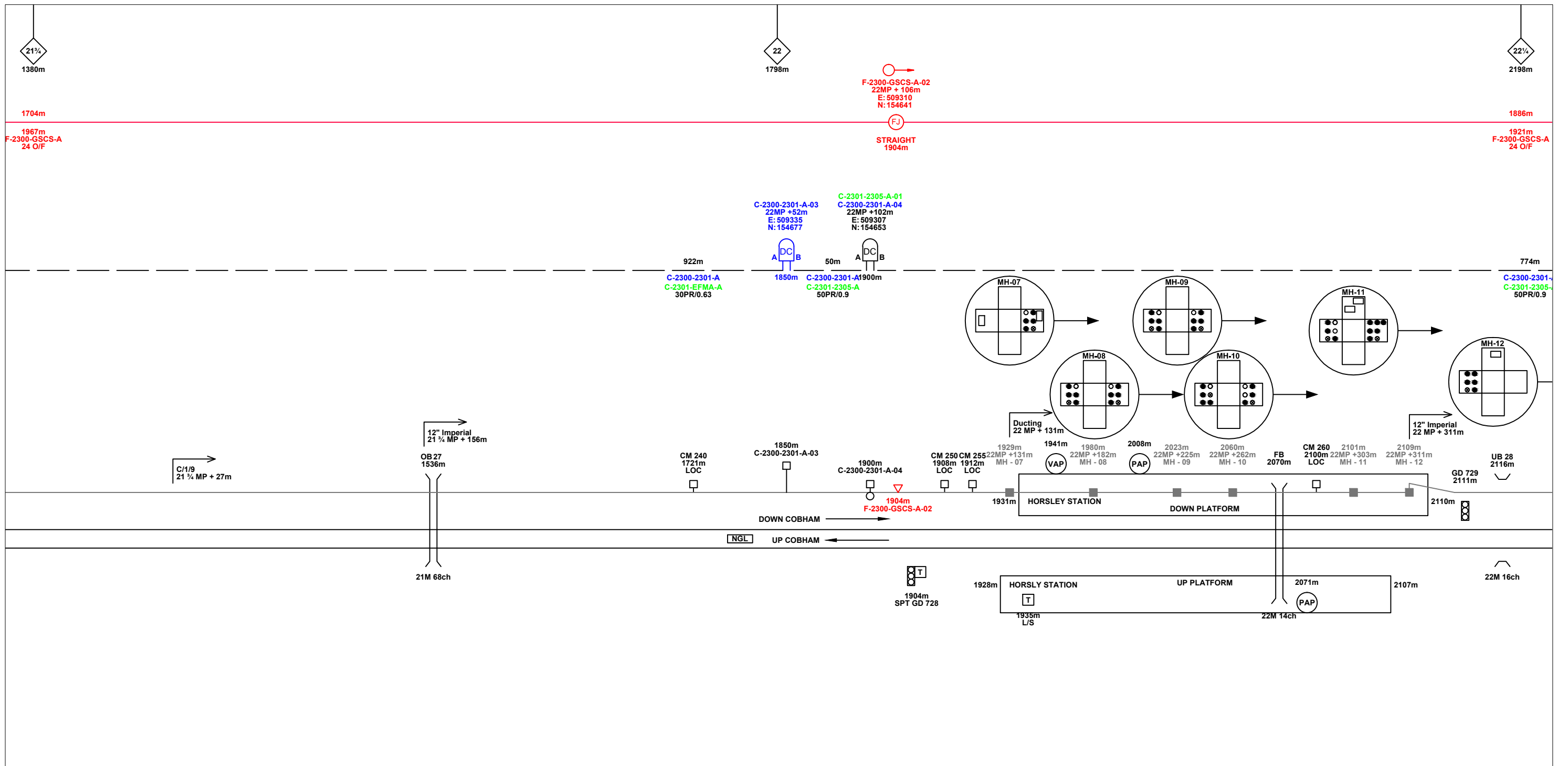
FTN/GSM-R Project
Tournament House
Paddington
London
W2 1HA

Alternative Reference: See Layout Tab 841 x 297 Sheet 1

Drawing Number: NTPO\SLD\2300\2301\001

Sheet: 2 of 7

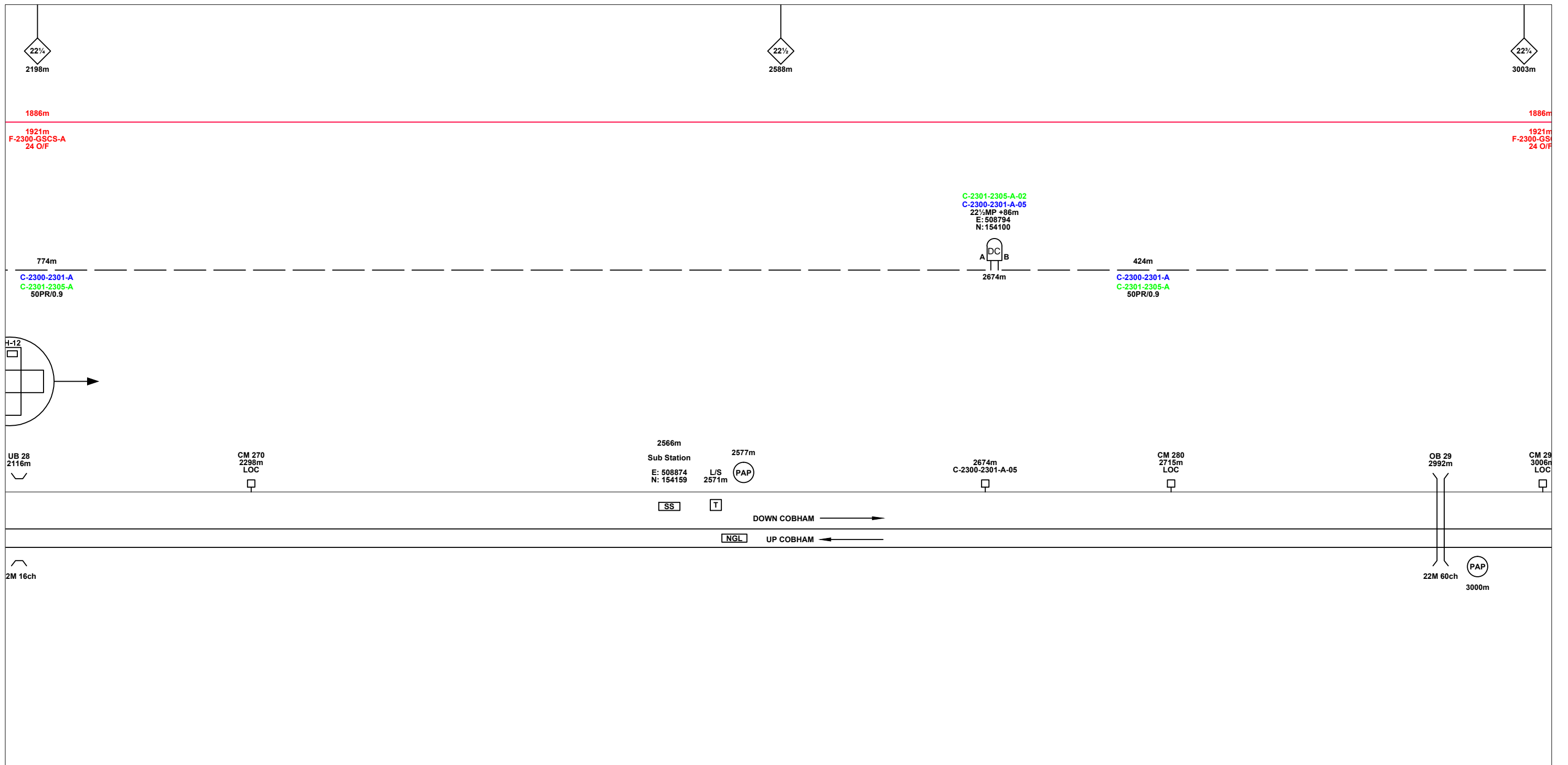
Revision: B



Legend

	Cabinet and Verts		Copper Joint		Trough Duct Cable Tray		Signal Box		FTN Core Node		Screen Joint Routeworks		Overbridge		Signal		Engineer's Line Reference		Fence
	Cabinet with Regenerator and Verts		Fibre Joint		Cable - Type Identified by FTN Code		Electrical Control Room		Core Node with GSM-R Colocated		Copper Joint Routeworks		Manhole details: Cross - To be used Filled - In use Clear - Empty		Vehicle Access Point		Mile Post		Crossing
	Screening Conductor Joint with/without Earth		Manhole		Status - as per Key Below		Mid Length Sheath Gap Fibre		FTN Access Node		Cabinet Routeworks		Underbridge		Pedestrian Access Point		Platform		Gantry
KEY	Proposed Fibre & Civils Elements are shown in RED	All Existing Elements are shown in BLACK			Existing Fibre Cable		Sheath Gap Copper		FTN Access Node with GSM-R Colocated		Fibre Joint Routeworks		Earth Farm		Buffer Stop		Telephone		Cable Pull
	Proposed Copper Elements are shown in BLUE		Existing Copper Cable		Existing Screen Cable								AC Stanchion						Gas Line
	Proposed Screening Elements are shown in MAGENTA																		HV Cable
	All Recoveries are shown in GREEN																		LV Cable
																			Sewer
																			Telecoms
																			Water

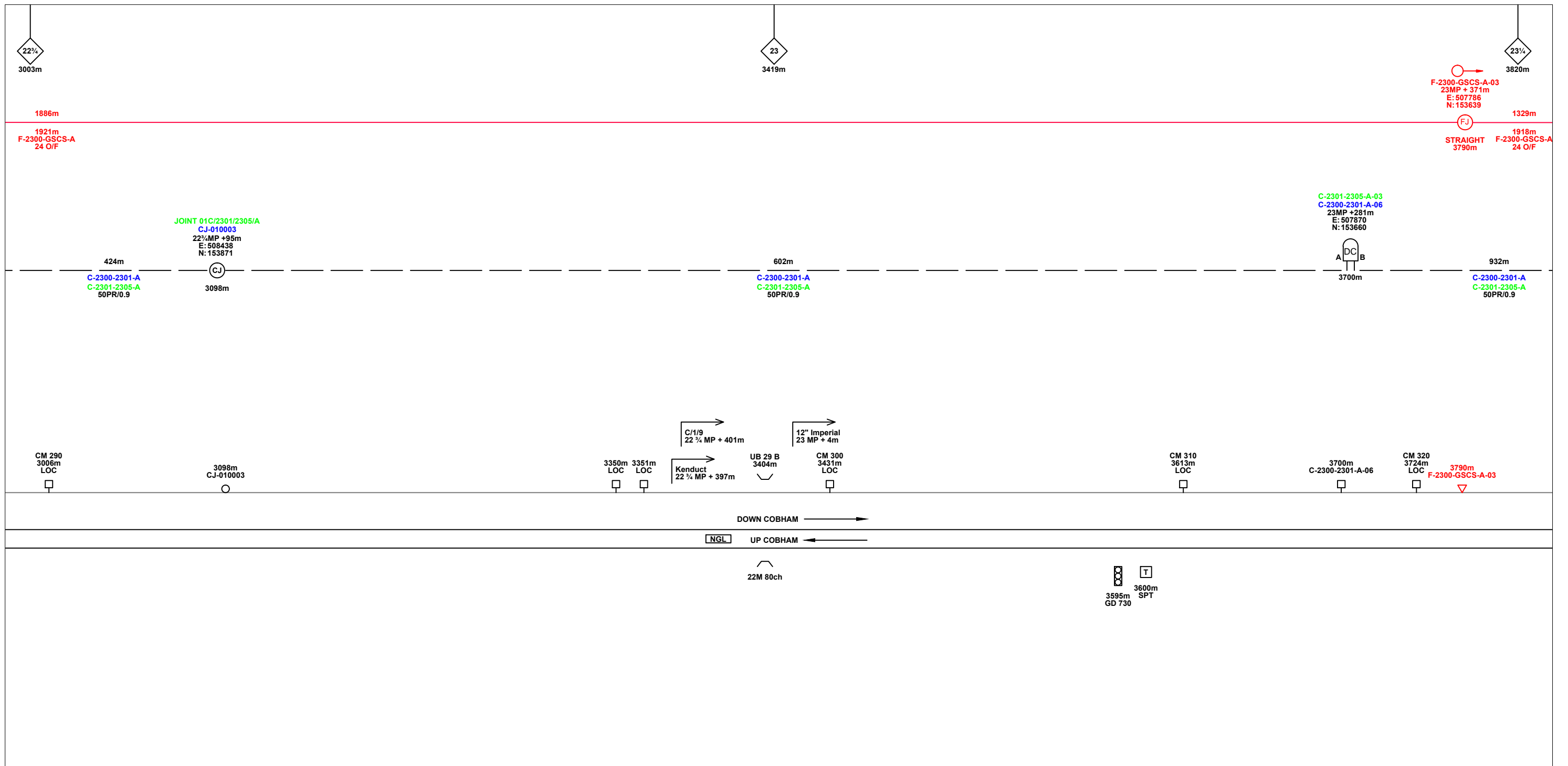
Notes			Contractor(s)			Designed Aimee Cater Sign. <i>[Signature]</i> Date 13/04/10			<p>FTN/GSM-R Project Tournament House Paddington London W2 1HA</p>		
						Drawn Aimee Cater Sign. <i>[Signature]</i> Date 13/04/10					
						Checked Matthew Cleaver Sign. <i>[Signature]</i> Date 13/04/10					
						Approved Chris Tappenden Sign. <i>[Signature]</i> Date 13/04/10					
Status Design						Project FTN / GSM-R Project Guildford to Redhill					
Drawing Title Effingham Junction (2300) to Horsley Station (2301)						Alternative Reference See Layout Tab 841 x 297 Sheet 2					
Scale(s) NTS						Drawing Number NTPO\SLD\2300\2301\001					
Rev						Sheet 3 of 7					
Rev						Revision B					



Legend

Cabinet and Verts	Copper Joint	Trough Duct Cable Tray	Signal Box	FTN Core Node	Screen Joint Routeworks	Overbridge	Signal	Engineer's Line Reference	Fence
Cabinet with Regenerator and Verts	Fibre Joint	Cable - Type Identified by FTN Code	Electrical Control Room	Core Node with GSM-R Colocated	Copper Joint Routeworks	Manhole	Vehicle Access Point	Mile Post	Gas Line
KEY Proposed Fibre & Civils Elements are shown in RED Proposed Copper Elements are shown in BLUE Proposed Screening Elements are shown in MAGENTA All Recoveries are shown in GREEN	Screening Conductor Joint with/without Earth	1988m 2034m F-DIDC-RGAC-A Status - as per Key Below	Mid Length Sheath Gap Fibre	FTN Access Node	Cabinet Routeworks	Manhole details: Cross-To be used, Filled-In use, Clear-Empty	Pedestrian Access Point	Platform	HV Cable
All Existing Elements are shown in BLACK	Sheath Gap Copper	Existing Fibre Cable	FTN Access Node with GSM-R Colocated	Fibre Joint Routeworks	Tunnel	Underbridge	Earth Farm	Buffer Stop	Sewer
Existing Copper Cable		Existing Screen Cable				Gantry	Telephone	AC Stanchion	Water

Contractor(s)			Designed: Aimee Cater, Sign: <i>[Signature]</i> , Date: 13/04/10			<p>FTN/GSM-R Project Tournament House Paddington London W2 1HA</p>
			Drawn: Aimee Cater, Sign: <i>[Signature]</i> , Date: 13/04/10			
			Checked: Matthew Cleaver, Sign: <i>[Signature]</i> , Date: 13/04/10			
			Approved: Chris Tappenden, Sign: <i>[Signature]</i> , Date: 13/04/10			
Status: Design			Project: FTN / GSM-R Project Guildford to Redhill			Alternative Reference: See Layout Tab 841 x 297 Sheet 2
Scale(s): NTS			Drawing Title: Effingham Junction (2300) to Horsley Station (2301)			Sheet: 4 of 7
Rev: Date Description of Revisions Drawn Chkd Appr			Drawing Number: NTPO\SLD\2300\2301\001			Revision: B



Legend

	Cabinet and Verts		Copper Joint		Trough Duct Cable Tray		Signal Box		FTN Core Node		Screen Joint Routeworks		Overbridge		Signal		Engineer's Line Reference		Fence
	Cabinet with Regenerator and Verts		Fibre Joint		Cable - Type Identified by FTN Code		Electrical Control Room		Core Node with GSM-R Colocated		Copper Joint Routeworks		Manhole		Vehicle Access Point		Mile Post		Crossing
	KEY		Screening Conductor Joint with/without Earth		Status - as per Key Below		Mid Length Sheath Gap Fibre		FTN Access Node		Cabinet Routeworks		Underbridge		Pedestrian Access Point		Platform		Gantry
	Proposed Fibre & Civils Elements are shown in RED				Existing Fibre Cable		Sheath Gap Copper		FTN Access Node with GSM-R Colocated		Fibre Joint Routeworks		Tunnel		Earth Farm		Buffer Stop		Telephone
	Proposed Copper Elements are shown in BLUE				Existing Copper Cable														AC Stanchion
	Proposed Screening Elements are shown in MAGENTA				Existing Screen Cable														
	All Recoveries are shown in GREEN																		

Notes

Rev	Date	Description of Revisions	Drawn	Chkd	Appr
B	23/11/10	Added All Terminations at Node 2300	JU	AC	CT
A	13/04/10	First Issue	AC	MC	CT

Contractor(s)

Status: **Design**

Scale(s): NTS

ELR & Mileage: LEJ / NGL

Designed	Aimee Cater	Sign.		Date	13/04/10
Drawn	Aimee Cater	Sign.		Date	13/04/10
Checked	Matthew Cleaver	Sign.		Date	13/04/10
Approved	Chris Tappenden	Sign.		Date	13/04/10
Project: FTN / GSM-R Project Guildford to Redhill					
Drawing Title: Effingham Junction (2300) to Horsley Station (2301)					

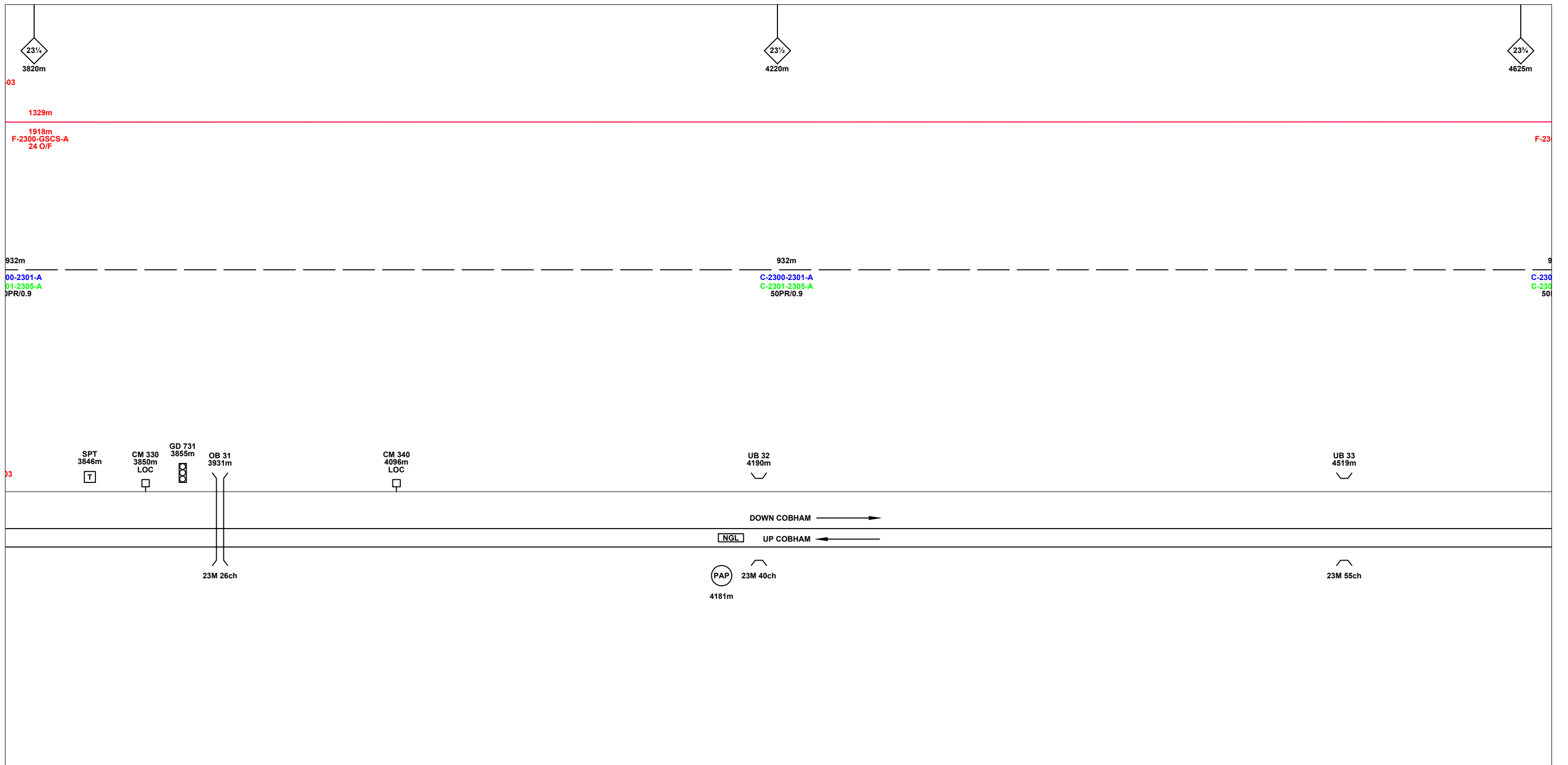
FTN/GSM-R Project
Tournament House
Paddington
London
W2 1HA

Alternative Reference: See Layout Tab 841 x 297 Sheet 3

Sheet: 5 of 7

Drawing Number: NTPO\SLD\2300\2301\001

Revision: B



Legend

Cabinet and Verts	Copper Joint	Trough Duct Cable Tray	Signal Box	FTN Core Node	Screen Joint Routeworks	Overbridge	Signal	Engineer's Line Reference	Fence
Cabinet with Regenerator and Verts	Fibre Joint	Cable - Type Identified by FTN Code	Electrical Control Room	Core Node with GSM-R Colocated	Copper Joint Routeworks	Manhole	Vehicle Access Point	Mile Post	Gas Line
KEY Proposed Fibre & Civils Elements are shown in RED Proposed Copper Elements are shown in BLUE Proposed Screening Elements are shown in MAGENTA All Recoveries are shown in GREEN	Screening Conductor Joint with/without Earth	Status - as per Key Below	Mid Length Sheath Gap Fibre	FTN Access Node	Cabinet Routeworks	Manhole details: Cross-To be used, Filled-In use, Clear-Empty	Pedestrian Access Point	Platform	HV Cable
		Existing Fibre Cable	Sheath Gap Copper	FTN Access Node with GSM-R Colocated	Fibre Joint Routeworks	Tunnel	Earth Farm	Buffer Stop	Sewer
		Existing Copper Cable						Telephone	Telecoms
		Existing Screen Cable							Water
									AC Stanchion

Notes

Rev	Date	Description of Revisions	Drawn	Chkd	Appr
B	23/11/10	Added All Terminations at Node 2300	JU	AC	CT
A	13/04/10	First Issue	AC	MC	CT

Contractor(s)

Status: **Design**

Scale(s): NTS

ELR & Mileage: LEJ / NGL

Designed	Aimee Cater	Sign.		Date	13/04/10
Drawn	Aimee Cater	Sign.		Date	13/04/10
Checked	Matthew Cleaver	Sign.		Date	13/04/10
Approved	Chris Tappenden	Sign.		Date	13/04/10
Project: FTN / GSM-R Project Guildford to Redhill					
Drawing Title: Effingham Junction (2300) to Horsley Station (2301)					

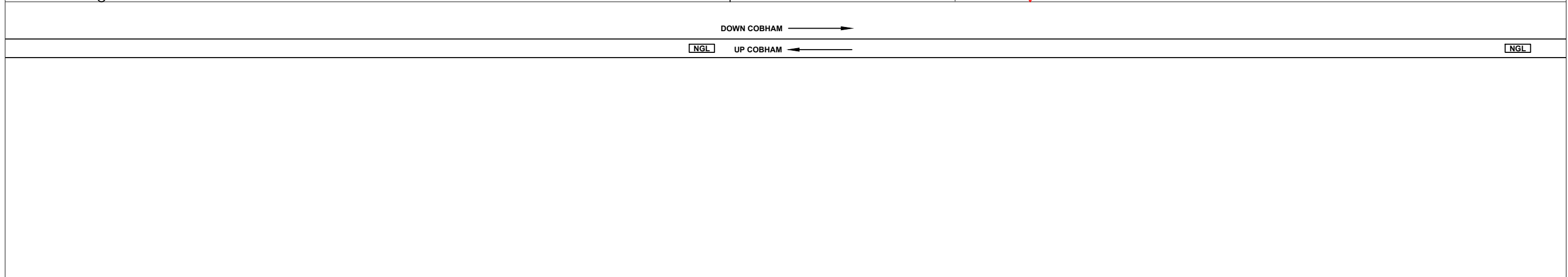
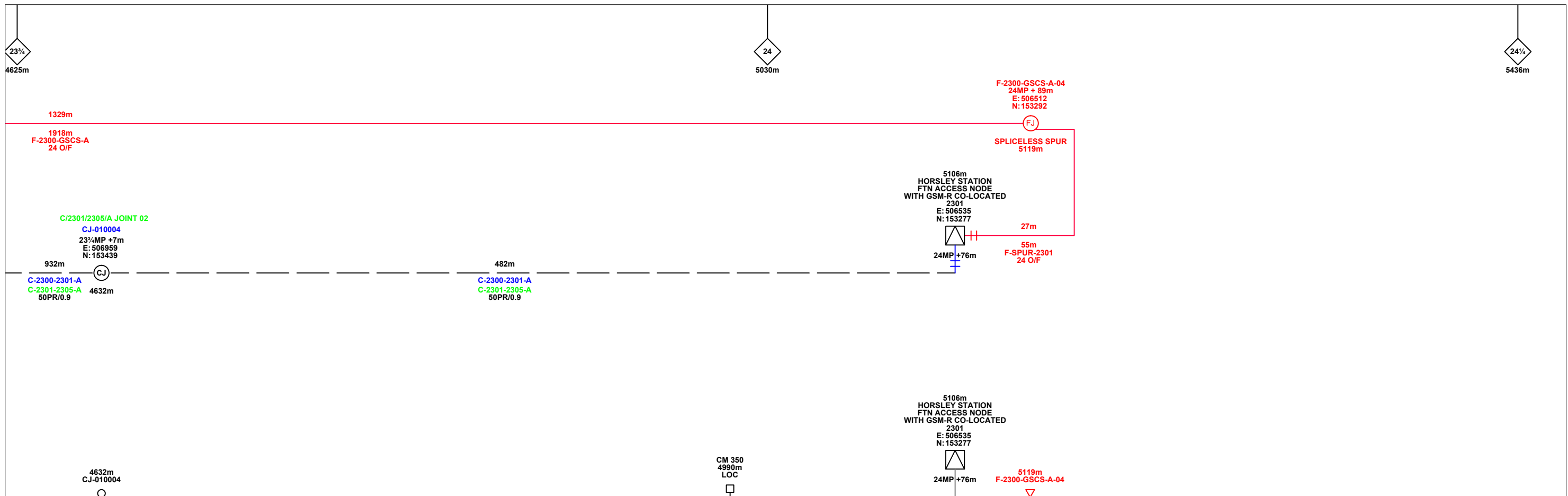
FTN/GSM-R Project
Tournament House
Paddington
London
W2 1HA

Alternative Reference: See Layout Tab 841 x 297 Sheet 3

Drawing Number: NTPO\SLD\2300\2301\001

Sheet: 6 of 7

Revision: B



Legend

Cabinet and Verts	Copper Joint	Trough Duct Cable Tray	Signal Box	FTN Core Node	Screen Joint Routeworks	Overbridge	Signal	Engineer's Line Reference	Fence
Cabinet with Regenerator and Verts	Fibre Joint	Cable - Type Identified by FTN Code	Electrical Control Room	Core Node with GSM-R Colocated	Copper Joint Routeworks	Manhole	Vehicle Access Point	Mile Post	Gas Line
KEY	Screening Conductor Joint with/without Earth	Status - as per Key Below	Mid Length Sheath Gap Fibre	FTN Access Node	Cabinet Routeworks	Manhole details: Cross-To be used, Filled-In use, Clear-Empty	Pedestrian Access Point	Platform	HV Cable
Proposed Fibre & Civils Elements are shown in RED	Fibre Cable	Fibre Cable	Sheath Gap Copper	FTN Access Node with GSM-R Colocated	Fibre Joint Routeworks	Tunnel	Buffer Stop	Telephone	LV Cable
Proposed Copper Elements are shown in BLUE	Existing Fibre Cable	Existing Fibre Cable	Existing Fibre Cable	Existing Fibre Cable	Existing Fibre Cable	Earth Farm	AC Stanchion	Water	Sewer
Proposed Screening Elements are shown in MAGENTA	Existing Copper Cable	Existing Copper Cable	Existing Copper Cable	Existing Copper Cable	Existing Copper Cable	Gantry			Telecoms
All Recoveries are shown in GREEN	Existing Screen Cable	Existing Screen Cable	Existing Screen Cable	Existing Screen Cable	Existing Screen Cable	Cable Pull			Water

Notes

Rev	Date	Description of Revisions	Drawn	Chkd	Appr
B	23/11/10	Added All Terminations at Node 2300	JU	AC	CT
A	13/04/10	First Issue	AC	MC	CT

Contractor(s)

Status: **Design**

Scale(s): NTS

ELR & Mileage: LEJ / NGL

Designed	Aimee Cater	Sign.		Date	13/04/10
Drawn	Aimee Cater	Sign.		Date	13/04/10
Checked	Matthew Cleaver	Sign.		Date	13/04/10
Approved	Chris Tappenden	Sign.		Date	13/04/10

Project: FTN / GSM-R Project Guildford to Redhill

Drawing Title: Effingham Junction (2300) to Horsley Station (2301)

FTN/GSM-R Project
Tournament House
Paddington
London
W2 1HA

Alternative Reference: See Layout Tab 841 x 297 Sheet 4

Drawing Number: NTPO\SLD\2300\2301\001

Sheet: 7 of 7

Revision: B