

Legend

Cabinet and Verts	Copper Joint	Trough Duct Cable Tray	Signal Box	FTN Core Node	Screen Joint Routeworks
Cabinet with Regenerator and Verts	Fibre Joint	Cable - Type Identified by FTN Code Status - as per Key Below	Electrical Control Room	Core Node with GSM-R Colocated	Copper Joint Routeworks
KEY	Screening Conductor Joint with/without Earth	Manhole	Mid Length Sheath Gap Fibre	FTN Access Node	Cabinet Routeworks
All Existing Elements are shown in BLACK	Manhole details: Cross-To be used Filled-In use Clear-Empty	Manhole	Sheath Gap Copper	FTN Access Node with GSM-R Colocated	Fibre Joint Routeworks
	Tunnel			Overbridge	Signal
				Underbridge	Vehicle Access Point
				Earth Form	Pedestrian Access Point
				Buffer Stop	MLNI
				Telephone	Engineer's Line Reference
				Crossing	Mast
				Gantry	Gas Line
				Cable Pull	HV Cable
					LV Cable
					Sewer
					Telecoms
					Water

Notes

ndc consultants
 Unit 4 Apex Park, Watnigh Road, Worcester, Worcestershire, WR4 9FN. Tel: 01905 756000

As-Built
 ELR & Mileage
 RDG1

Designed	Sign.	Date
Drawn	Sign.	Date
Checked	Sign.	Date
Approved	Sign.	Date
Project		
Drawing Title		

Network Rail

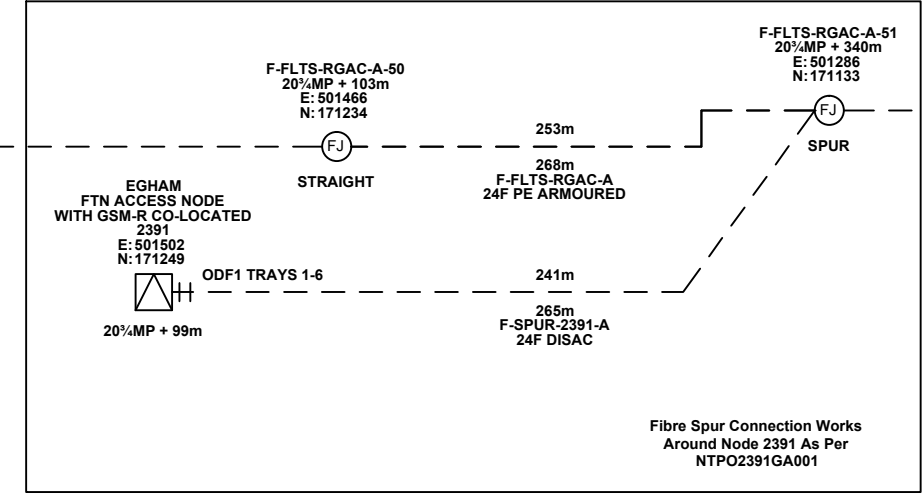
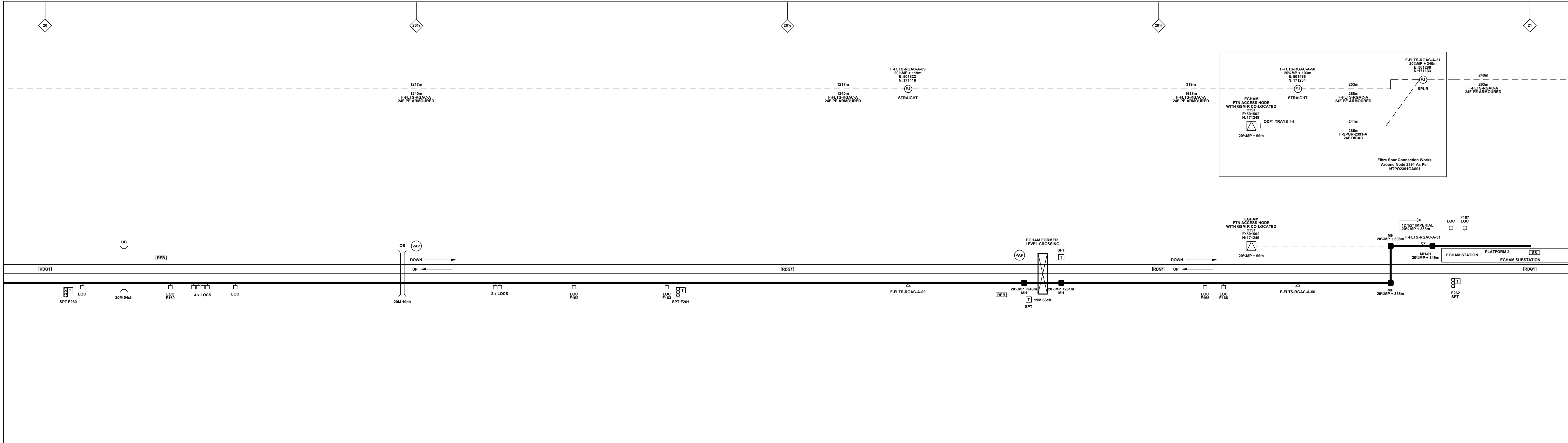
FTN/GSM-R Project Stage 2 As-Built

Staines Station (2126) to Egham (2391)

See Layout Tab A3 Sheets 1 and 2

Sheet 1 of 2
 Revision A

NTPO\SLD\2126\2391\001



Legend

Cabinet and Verts	Copper Joint	Trough Duct Cable Tray	Signal Box	FTN Core Node	Screen Joint Routeworks	Manhole details: Cross-To be used Filled-In use Clear-Empty	Overbridge	Signal	Engineer's Line Reference	GAS — GAS — Gas Line
Cabinet with Regenerator and Verts	Fibre Joint	Cable - Type Identified by FTN Code Status - as per Key Below	Electrical Control Room	Core Node with GSM-R Colocated	Copper Joint Routeworks	Manhole	Underbridge	Vehicle Access Point	Mile Post	HV — HV — HV Cable
Screening Conductor Joint with/without Earth	Manhole	Mid Length Sheath Gap Fibre	FTN Access Node	FTN Access Node with GSM-R Colocated	Cabinet Routeworks	Sheath Gap Copper	Platform	Pedestrian Access Point	Telephone	LV — LV — LV Cable
KEY Proposed Fibre & Civils Elements are shown in RED Proposed Copper Elements are shown in BLUE Proposed Screening Elements are shown in MAGENTA All Recoveries are shown in GREEN	All Existing Elements are shown in BLACK Existing Fibre Cable Existing Copper Cable Existing Screen Cable						Earth Form	Buffer Stop	Cable Pull	SEW — SEW — Sewer
							Mast			TEL — TEL — Telecoms
										W — W — Water

Notes

Rev	Date	Description of Revisions	Drawn	Chkd	Appr
A	07/09/12	Stage 2 As-Built (redrafted from NTPOSLD2126FLTS001AB1.dwg and NTPOSLD21262391001AB1.dwg)	DH	RM	CT

ndc consultants
Unit 4 Apex Park, Watlington Road, Worcester, Worcestershire, WR4 9FN. Tel: 01905 756000

As-Built

Scale(s): ELR & Mileage RDG1

Status: NTS

Contractor(s)	Designed	Sign.	Date
	Drawn	Sign.	Date
	Checked	Sign.	Date
	Approved	Sign.	Date

Project: FTN/GSM-R Project Stage 2 As-Built

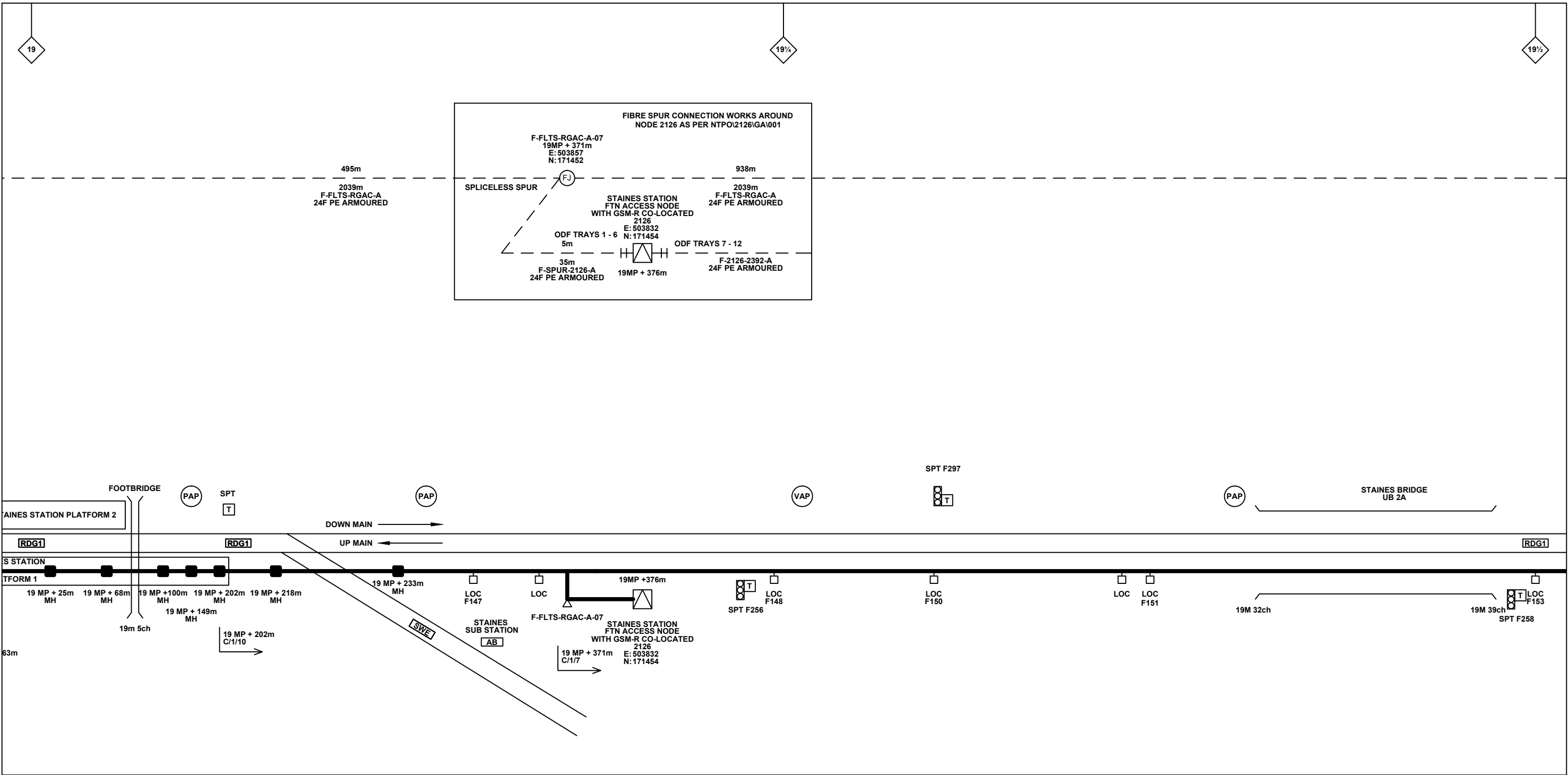
Drawing Title: Staines Station (2126) to Egham (2391)

FTN/GSM-R Project
Tournament House
Passington
London
W2 1HA

Alternative Reference: See Layout Tab A3 Sheets 3 and 4

Drawing Number: NTPO\SLD\2126\2391\001

Sheet: 2 of 2
Revision: A



Legend

Cabinet and Verts	Copper Joint	Trough Duct Cable Tray	Signal Box	FTN Core Node	Screen Joint Routeworks	Overbridge	Signal	Engineer's Line Reference	Crossing	Gas Line
Cabinet with Regenerator and Verts	Fibre Joint	Cable - Type Identified by FTN Code	Electrical Control Room	Core Node with GSM-R Colocated	Copper Joint Routeworks	Underbridge	Vehicle Access Point	Mile Post	Gantry	HV Cable
KEY Proposed Fibre & Civils Elements are shown in RED Proposed Copper Elements are shown in BLUE Proposed Screening Elements are shown in MAGENTA All Recoveries are shown in GREEN	Screening Conductor Joint with/without Earth	Manhole	Mid Length Sheath Gap Fibre	FTN Access Node	Cabinet Routeworks	Manhole details: Cross-To be used, Filled-In use, Clear-Empty	Pedestrian Access Point	Platform	Sewer	LV Cable
All Existing Elements are shown in BLACK	Status - as per Key Below	Sheath Gap Copper	FTN Access Node with GSM-R Colocated	Fibre Joint Routeworks	Tunnel	Earth Farm	Buffer Stop	Telephone	Water	Mast

Notes

Rev	Date	Description of Revisions	Drawn	Chkd	Appr
A	07/09/12	Stage 2 As-Built (redrafted from NTPOSLD2126FLTS001AB1.dwg and NTPOSLD21262391001AB1.dwg)	DH	RM	CT

Contractor(s)

ndc consultants
Unit 4 Apex Park, Wainwright Road, Worcester, Worcestershire, WR4 9FN. Tel: 01905 756000

Status: **As-Built**

Scale(s): NTS, ELR & Mileage RDG1

Designed		Sign.		Date	
Drawn	David Hindle	Sign.	<i>D. Hindle</i>	Date	09/09/2012
Checked	Richard Mansfield	Sign.	<i>R Mansfield</i>	Date	09/09/2012
Approved	Chris Tappenden	Sign.	<i>C Tappenden</i>	Date	09/09/2012
Project	FTN/GSM-R Project Stage 2 As-Built				
Drawing Title	Staines Station (2126) to Egham (2391)				

Network Rail

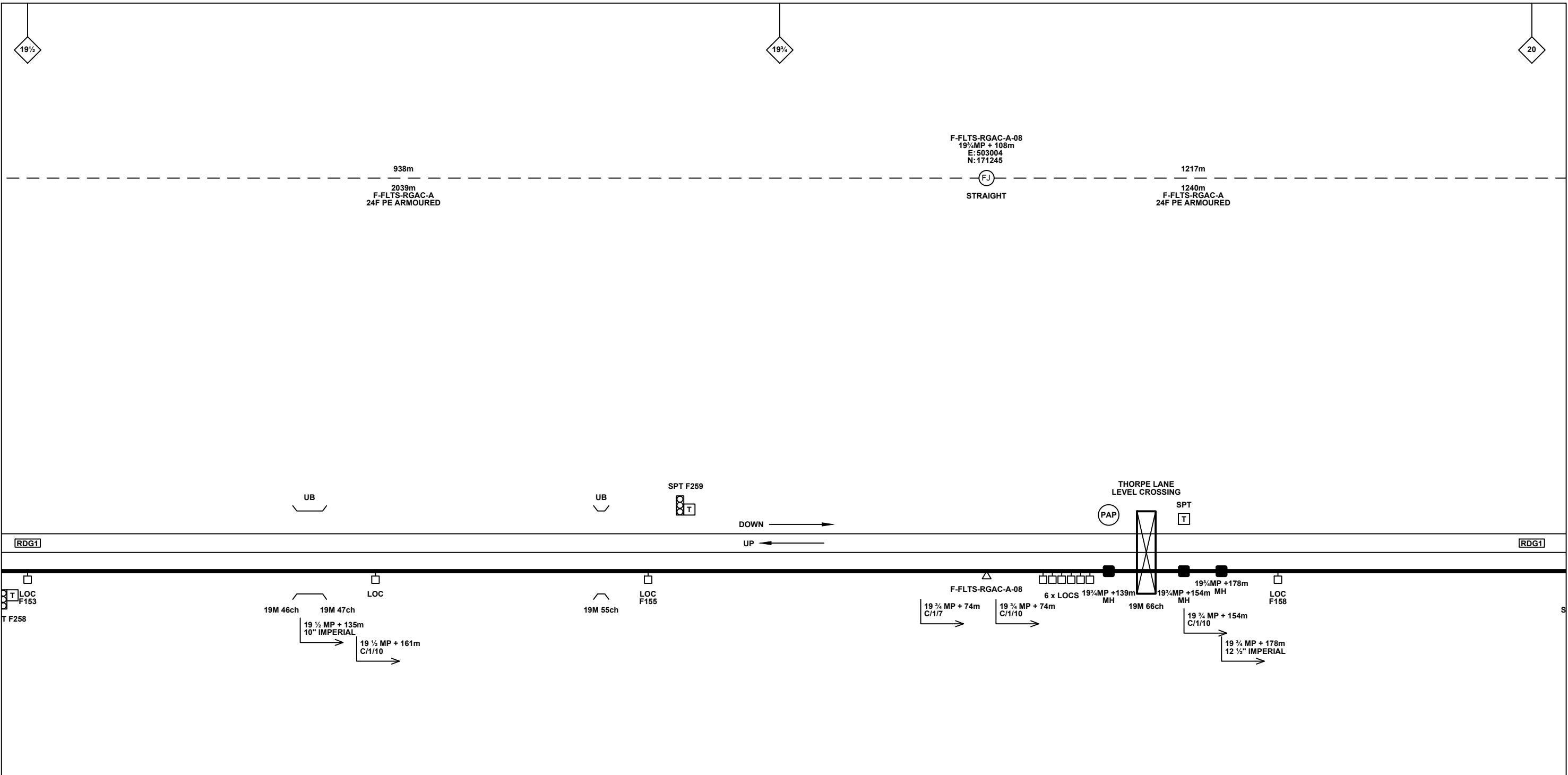
FTN/GSM-R Project
Tournament House
Paddington
London
W2 1HA

Alternative Reference: See Layout Tab 841 x 297 Sheet 1

Drawing Number: NTPO\SLD\2126\2391\001

Sheet: 1 of 4

Revision: A



Legend

Cabinet and Verts	Copper Joint	Trough Duct Cable Tray	Signal Box	FTN Core Node	Screen Joint Routeworks	Overbridge	Signal	Engineer's Line Reference	Gas Line
Cabinet with Regenerator and Verts	Fibre Joint	Cable - Type Identified by FTN Code	Electrical Control Room	Core Node with GSM-R Colocated	Copper Joint Routeworks	Underbridge	Vehicle Access Point	Mile Post	HV Cable
KEY Proposed Fibre & Civils Elements are shown in RED Proposed Copper Elements are shown in BLUE Proposed Screening Elements are shown in MAGENTA All Recoveries are shown in GREEN	Screening Conductor Joint with/without Earth	Status - as per Key Below	Manhole	FTN Access Node	Cabinet Routeworks	Manhole details: Cross-To be used, Filled-In use, Clear-Empty	Pedestrian Access Point	Platform	LV Cable
	Existing Fibre Cable	Existing Copper Cable	Mid Length Sheath Gap Fibre	FTN Access Node with GSM-R Colocated	Fibre Joint Routeworks	Tunnel	Earth Farm	Gantry	Sewer
	Existing Screen Cable		Sheath Gap Copper			Buffer Stop	Telephone	Water	Mast

Notes

Rev	Date	Description of Revisions	Drawn	Chkd	Appr
A	07/09/12	Stage 2 As-Built (redrafted from NTPOSLD2126FLTS001AB1.dwg and NTPOSLD21262391001AB1.dwg)	DH	RM	CT

Contractor(s)

ndc consultants
Unit 4 Apex Park, Wainwright Road, Worcester, Worcestershire, WR4 9FN. Tel: 01905 756000

Status: **As-Built**

Scale(s): NTS

ELR & Mileage: RDG1

Designed	David Hindle	Sign.	<i>D. Hindle</i>	Date	09/09/2012
Checked	Richard Mansfield	Sign.	<i>R Mansfield</i>	Date	09/09/2012
Approved	Chris Tappenden	Sign.	<i>C Tappenden</i>	Date	09/09/2012
Project	FTN/GSM-R Project Stage 2 As-Built				
Drawing Title	Staines Station (2126) to Egham (2391)				

Network Rail

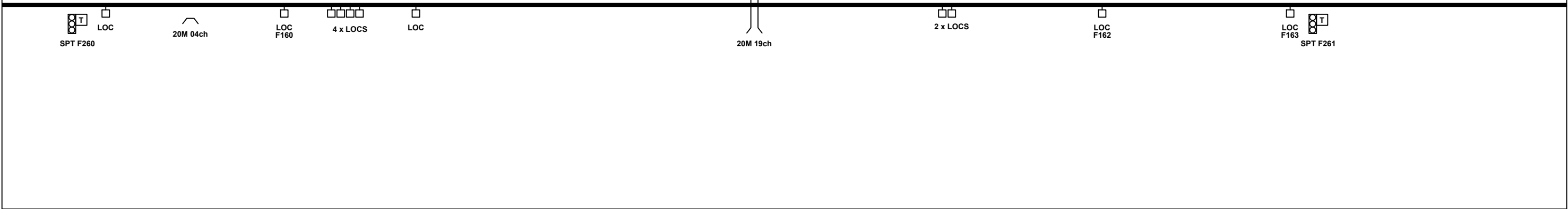
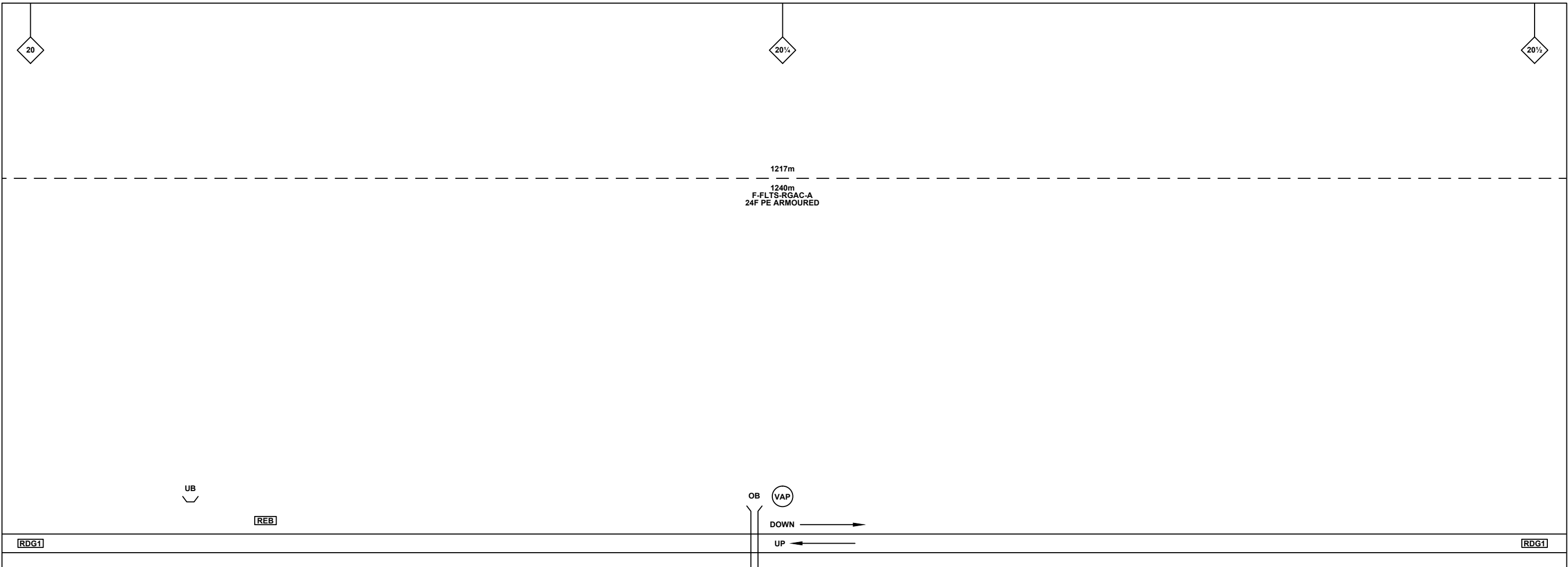
FTN/GSM-R Project
Tournament House
Paddington
London
W2 1HA

Alternative Reference: See Layout Tab 841 x 297 Sheet 1

Drawing Number: NTPO\SLD\2126\2391\001

Sheet: 2 of 4

Revision: A



Legend

Cabinet and Verts	Copper Joint	Trough Duct Cable Tray	Signal Box	FTN Core Node	Screen Joint Routeworks	Overbridge	Signal	Engineer's Line Reference	Crossing	Gas Line
Cabinet with Regenerator and Verts	Fibre Joint	Cable - Type Identified by FTN Code	Electrical Control Room	Core Node with GSM-R Colocated	Copper Joint Routeworks	Manhole	Vehicle Access Point	Mile Post	HV Cable	LV Cable
KEY Proposed Fibre & Civils Elements are shown in RED Proposed Copper Elements are shown in BLUE Proposed Screening Elements are shown in MAGENTA All Recoveries are shown in GREEN	Screening Conductor Joint with/without Earth	Status - as per Key Below	Mid Length Sheath Gap Fibre	FTN Access Node	Cabinet Routeworks	Manhole details: Cross-To be used, Filled-In use, Clear-Empty	Pedestrian Access Point	Platform	Sewer	Telecoms
		Existing Fibre Cable	Sheath Gap Copper	FTN Access Node with GSM-R Colocated	Fibre Joint Routeworks	Tunnel	Earth Farm	Buffer Stop	Water	Mast

Notes

Rev	Date	Description of Revisions	Drawn	Chkd	Appr
A	07/09/12	Stage 2 As-Built (redrafted from NTPOSLD2126FLTS001AB1.dwg and NTPOSLD21262391001AB1.dwg)	DH	RM	CT

Contractor(s)

Unit 4 Apex Park, Wainwright Road, Worcester, Worcestershire, WR4 9FN. Tel: 01905 756000

Status: **As-Built**

Scale(s): NTS

ELR & Mileage: RDG1

Designed		Sign.		Date	
Drawn	David Hindle	Sign.	<i>D. Hindle</i>	Date	09/09/2012
Checked	Richard Mansfield	Sign.	<i>R Mansfield</i>	Date	09/09/2012
Approved	Chris Tappenden	Sign.	<i>C Tappenden</i>	Date	09/09/2012
Project	FTN/GSM-R Project Stage 2 As-Built				
Drawing Title	Staines Station (2126) to Egham (2391)				

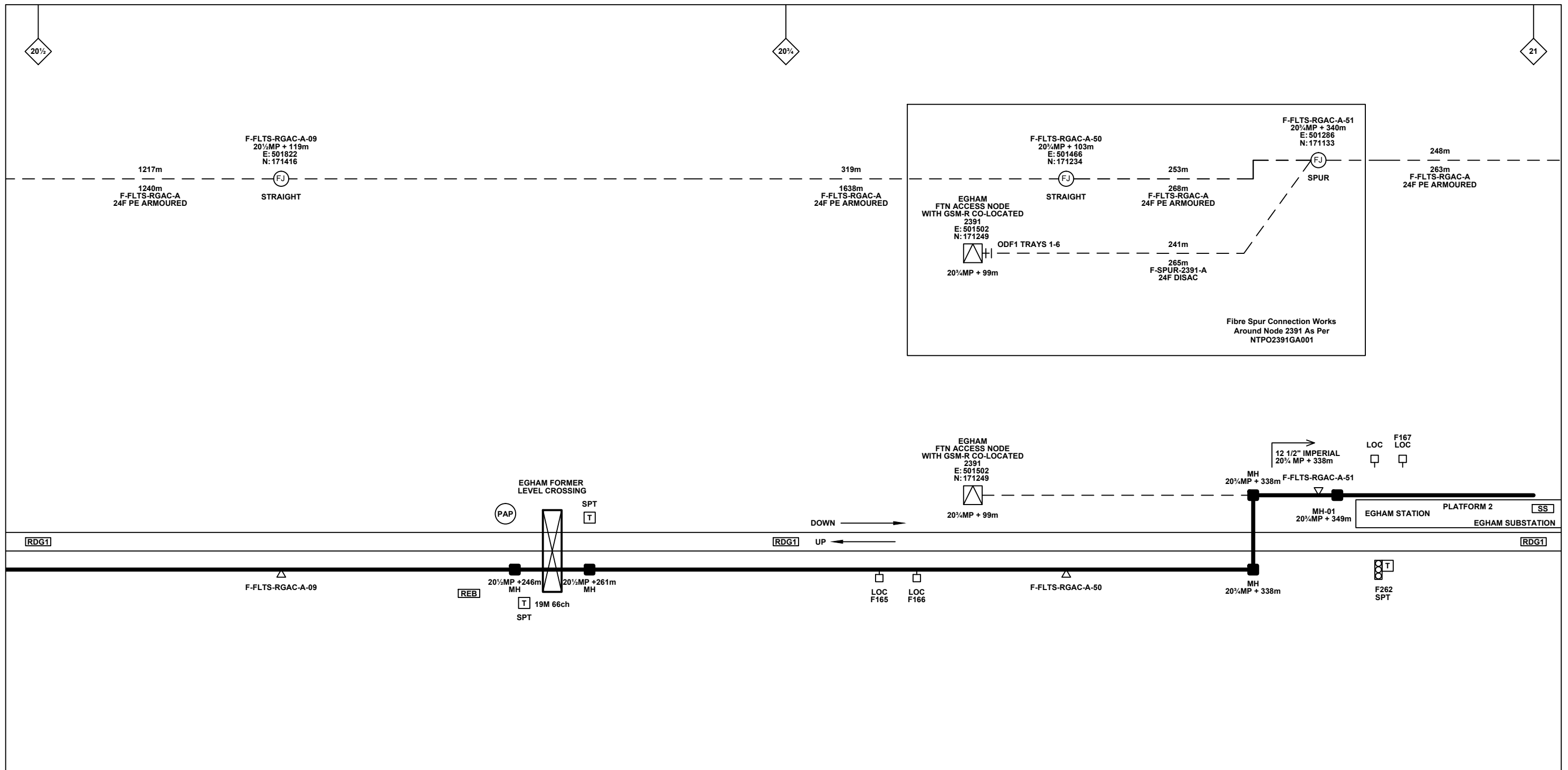
FTN/GSM-R Project
Tournament House
Paddington
London
W2 1HA

Alternative Reference: See Layout Tab 841 x 297 Sheet 2

Drawing Number: NTPO\SLD\2126\2391\001

Sheet: 3 of 4

Revision: A



Legend

Cabinet and Verts	Copper Joint	Trough Duct Cable Tray	Signal Box	FTN Core Node	Screen Joint Routeworks	Overbridge	Signal	Engineer's Line Reference	Crossing	Gas Line
Cabinet with Regenerator and Verts	Fibre Joint	Cable - Type Identified by FTN Code	Electrical Control Room	Core Node with GSM-R Colocated	Copper Joint Routeworks	Manhole	Vehicle Access Point	Mile Post	Gantry	HV Cable
KEY Proposed Fibre & Civils Elements are shown in RED Proposed Copper Elements are shown in BLUE Proposed Screening Elements are shown in MAGENTA All Recoveries are shown in GREEN	Screening Conductor Joint with/without Earth	Status - as per Key Below	Mid Length Sheath Gap Fibre	FTN Access Node	Cabinet Routeworks	Manhole details: Cross-To be used Filled-In use Clear-Empty	Pedestrian Access Point	Platform	Sewer	LV Cable
	Existing Fibre Cable	Existing Copper Cable	Sheath Gap Copper	FTN Access Node with GSM-R Colocated	Fibre Joint Routeworks	Tunnel	Earth Farm	Buffer Stop	Telecoms	Water
	Existing Screen Cable							Telephone	Copper Blue Fibre Red Screen Green	Mast

Contractor(s)			Designed			Sign.			Date		
 Unit 4 Apex Park, Wainwright Road, Worcester, Worcestershire, WR4 9FN. Tel: 01905 756000			Drawn			Sign.			Date		
			Checked			Sign.			Date		
			Approved			Sign.			Date		
			Project			FTN/GSM-R Project			FTN/GSM-R Project		
Status			Drawing Title			Alternative Reference			Sheet		
As-Built			Staines Station (2126) to Egham (2391)			See Layout Tab 841 x 297 Sheet 2			4 of 4		
Scale(s)			Drawing Number			Revision					
NTS			RDG1			NTPO\SLD\2126\2391\001			A		

