

Bill of Quantities			
7.359	Renumber Fibre Joint	each	2
7.373	Rename Cable (Fibre)	each	1

**Legend**

- Cabinet and Verts**: DCB, DCB
- Cabinet with Regenerator and Verts**: DCB, DCB
- Copper Joint**: CJ
- Fibre Joint**: FJ
- Screening Conductor Joint with/without Earth**: SJ, SJ
- Trough Duct Cable Tray**: 1988m, 2034m, F-DICD-RGAC-A
- Signal Box**: SB
- Electrical Control Room**: ECR
- Manhole**: MH
- Mid Length Sheath Gap Fibre**: ||
- Sheath Gap Copper**: ||
- FTN Core Node**: Circle with dot
- Core Node with GSM-R Colocated**: Circle with triangle
- FTN Access Node**: Square with triangle
- FTN Access Node with GSM-R Colocated**: Square with triangle and circle
- Screen Joint Routeworks**: Circle with cross
- Copper Joint Routeworks**: Circle with square
- Cabinet Routeworks**: Square with circle
- Fibre Joint Routeworks**: Square with triangle
- Manhole details:** Cross - To be used, Filled - In use, Clear - Empty
- Overbridge**: Triangle
- Underbridge**: Inverted triangle
- Earth Farm**: Square with cross
- Buffer Stop**: T
- Telephone**: T
- Engineer's Line Reference**: Diamond
- Mile Post**: Diamond
- Platform**: Rectangle
- AC Stanchion**: Square with X
- Cable Pull**: Circle with arrow
- Copper Blue Fibre Red Screen Green**: Circle with arrow

**KEY**

- Proposed Fibre & Civils Elements are shown in RED
- Proposed Copper Elements are shown in BLUE
- Proposed Screening Elements are shown in MAGENTA
- All Recoveries are shown in GREEN
- All Existing Elements are shown in BLACK
- Existing Fibre Cable: Dashed line
- Existing Copper Cable: Dotted line
- Existing Screen Cable: Dash-dot line

**Notes**

B	02/12/10	Stage 2 Design - First Issue Redrafted from NTPOSLD23262412001A.dwg	AB	JW	CT
A	07/07/08	Final Issue	MT	DH	SW
DA	28/05/08	First Issue	MT	DH	SW
Rev	Date	Description of Revisions	Drawn	Chkd	Appr

**ndcconsultants**  
Unit 4 Apex Park, Wainwright Road, Worcester, Worcestershire, WR4 9FN. Tel: 01905 756000

**Contractor(s)**

**Status** Design

**Scale(s)** ELR & Mileage: AAV, PAA1

**Designed** NDC Consultants Sign. Date: 02/12/10

**Drawn** Adam Bourne Sign. Date: 02/12/10

**Checked** Joe Winter Sign. Date: 02/12/10

**Approved** Chris Tappenden Sign. Date: 02/12/10

**Project** FTN / GSM-R Project

**Drawing Title** Ash Vale Signal Box (2326) to Frimley Station (2412)

**Network Rail**

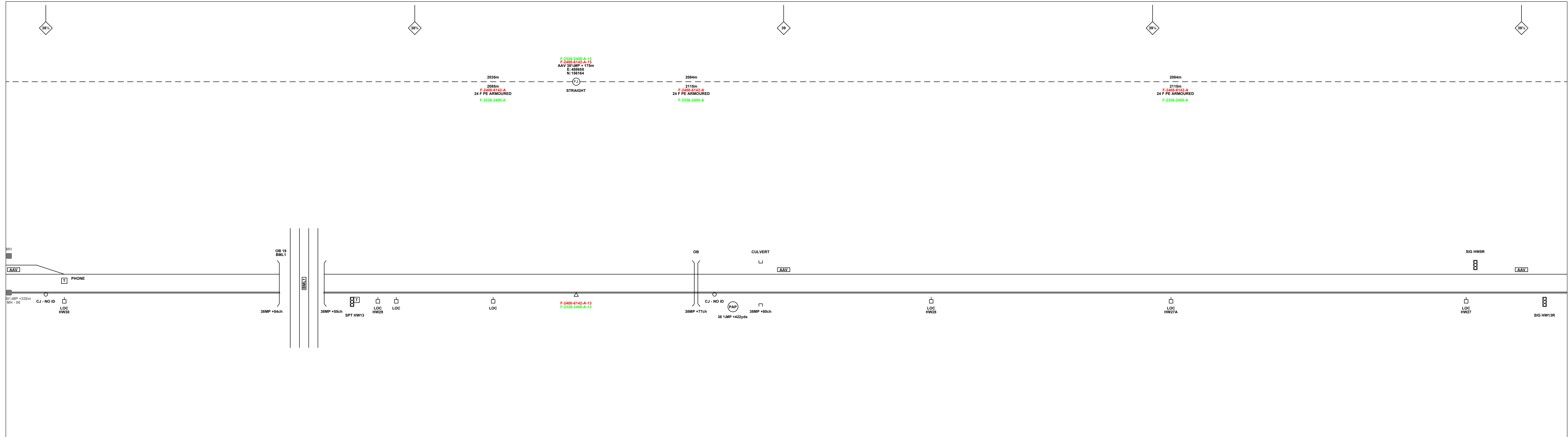
FTN/GSM-R Project  
Tournament House  
Passington  
Leicester  
LE21 1HA

**Alternative Reference** See Layout Tab A3 Sheets 1 and 2

**Drawing Number** NTPOSLD\2326\2412\001

**Sheet** 1 of 4

**Revision** B



**Legend**

Cabinet and Verts	Copper Joint	Trough Duct Cable Tray	Signal Box	FTN Core Node	Screen Joint Routeworks	Manhole	Overbridge	Signal	Engineer's Line Reference
Cabinet with Regenerator and Verts	Fibre Joint	Cable - Type Identified by FTN Code	Electrical Control Room	Core Node with GSM-R Colocated	Copper Joint Routeworks	Mid Length Sheath Gap Fibre	Underbridge	Vehicle Access Point	Mile Post
<b>KEY</b> Proposed Fibre & Civils Elements are shown in RED Proposed Copper Elements are shown in BLUE Proposed Screening Elements are shown in MAGENTA All Recoveries are shown in GREEN	Screening Conductor Joint with/without Earth	Status - as per Key Below	Manhole	FTN Access Node	Cabinet Routeworks	Sheath Gap Copper	Tunnel	Pedestrian Access Point	Platform
	Existing Fibre Cable	Existing Copper Cable	Manhole	FTN Access Node with GSM-R Colocated	Fibre Joint Routeworks	Earth Farm	Crossing	Gas Line	Telephone
	Existing Screen Cable		Manhole			Buffer Stop	Gantry	HV Cable	AC Stanchion
			Manhole				Cable Pull	LV Cable	
			Manhole					Sewer	
			Manhole					Telecoms	
			Manhole					Water	

**Notes**

Rev	Date	Description of Revisions	Drawn	Chkd	Appr
B	02/12/10	Stage 2 Design - First Issue Redrafted from NTPOSLD23262412001A.dwg	AB	JW	CT
A	07/07/08	Final Issue	MT	DH	SW
DA	28/05/08	First Issue	MT	DH	SW

**ndcconsultants**  
Unit 4 Apex Park, Wainwright Road, Worcester, Worcestershire, WR4 9FN. Tel: 01905 756000

**Design**  
ELR & Mileage  
AAV, PAA1

Designed	NDC Consultants	Sign.		Date	02/12/10
Drawn	Adam Bourne	Sign.		Date	02/12/10
Checked	Joe Winter	Sign.		Date	02/12/10
Approved	Chris Tappenden	Sign.		Date	02/12/10

**FTN / GSM-R Project  
Stage 2 Design**

**Ash Vale Signal Box (2326)  
to Frimley Station (2412)**

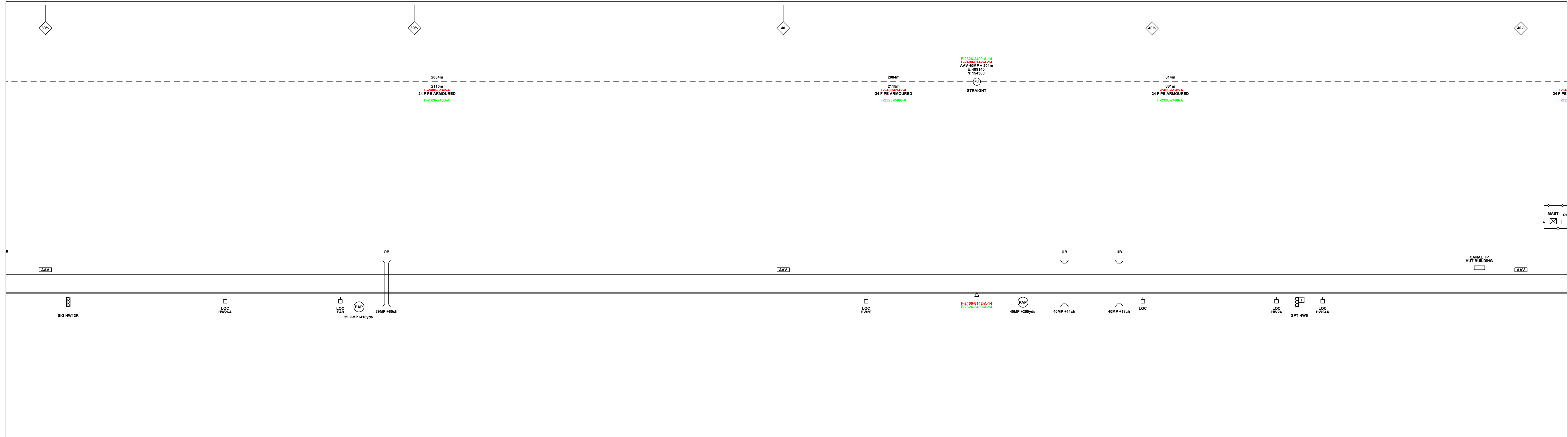
**Network Rail**

FTN/GSM-R Project  
Tournament House  
Passington  
London  
W2 1HA

Alternative Reference: See Layout Tab A3 Sheets 3 and 4

Drawing Number: NTPO\SLD\2326\2412\001

Sheet 2 of 4  
Revision B



**Legend**

Cabinet and Verts	Copper Joint	Trough Duct Cable Tray	Signal Box	FTN Core Node	Screen Joint Routeworks	Manhole details: Cross - To be used, Filled - In use, Clear - Empty	Overbridge	Signal	Engineer's Line Reference	Crossing	Gas Line
Cabinet with Regenerator and Verts	Fibre Joint	Cable - Type Identified by FTN Code	Electrical Control Room	Core Node with GSM-R Colocated	Copper Joint Routeworks	Manhole	Underbridge	Vehicle Access Point	Mile Post	Gantry	HV Cable
Screening Conductor Joint with/without Earth	1988m F-DIDC-RGAC-A	Status - as per Key Below	Manhole	FTN Access Node	Cabinet Routeworks	Mid Length Sheath Gap Fibre	Platform	Pedestrian Access Point	Telephone	Sewer	LV Cable
<b>KEY</b>		Existing Fibre Cable	Sheath Gap Copper	FTN Access Node with GSM-R Colocated	Fibre Joint Routeworks	Existing Copper Cable	Earth Farm	Buffer Stop	Copper Blue Fibre Red Screen Green	Telecoms	Water
Existing Screen Cable		Existing Screen Cable					Tunnel	AC Stanchion			

**Notes**

B	02/12/10	Stage 2 Design - First Issue Redrafted from NTPOSLD23262412001A.dwg	AB	JW	CT
A	07/07/08	Final Issue	MT	DH	SW
DA	28/05/08	First Issue	MT	DH	SW
Rev	Date	Description of Revisions	Drawn	Chkd	Appr

**ndcconsultants**  
Unit 4 Apex Park, Wainwright Road, Worcester, Worcestershire, WR4 9FN. Tel: 01905 756000

**Design**

Scale(s): ELR & Message  
AAV, PAA1

Designed	NDC Consultants	Sign.		Date	02/12/10
Drawn	Adam Bourne	Sign.		Date	02/12/10
Checked	Joe Winter	Sign.		Date	02/12/10
Approved	Chris Tappenden	Sign.		Date	02/12/10

**FTN / GSM-R Project Stage 2 Design**

**Ash Vale Signal Box (2326) to Frimley Station (2412)**

**Network Rail**

FTN/GSM-R Project  
Tournament House  
Passington  
London  
W2 1HA

Alternative Reference: See Layout Tab A3 Sheets 5 and 6

Drawing Number: NTPOSLD\2326\2412\001

Sheet 3 of 4  
Revision B



**Legend**

Cabinet and Verts	Copper Joint	Trough Duct Cable Tray	Signal Box	FTN Core Node	Screen Joint Routeworks
Cabinet with Regenerator and Verts	Fibre Joint	Cable - Type Identified by FTN Code	Electrical Control Room	Core Node with GSM-R Co-located	Copper Joint Routeworks
<b>KEY</b>	Screening Conductor Joint with/without Earth	Manhole	Mid Length Sheath Gap Fibre	FTN Access Node	Cabinet Routeworks
Proposed Fibre & Civils Elements are shown in RED		Existing Fibre Cable	Sheath Gap Copper	FTN Access Node with GSM-R Co-located	Fibre Joint Routeworks
Proposed Copper Elements are shown in BLUE		Existing Copper Cable			
Proposed Screening Elements are shown in MAGENTA		Existing Screen Cable			
All Recoveries are shown in GREEN					

Manhole details: Cross - To be used, Filled - In use, Clear - Empty

Overbridge, Underbridge, Gantry, Crossing, Earth Farm, Buffer Stop, Telephone, Signal, Mile Post, Platform, Vehicle Access Point, Pedestrian Access Point, Gas Line, HV Cable, LV Cable, Sewer, Telecoms, Water, AC Stanchion

**Notes**

B	02/12/10	Stage 2 Design - First Issue Redrafted from NTP0SLD23262412001A.dwg	AB	JW	CT
A	07/07/08	Final Issue	MT	DH	SW
DA	28/05/08	First Issue	MT	DH	SW
Rev	Date	Description of Revisions	Drawn	Chkd	Appr

**ndcconsultants**  
Unit 4 Apex Park, Wainwright Road, Worcester, Worcestershire, WR4 9FN. Tel: 01905 756000

Contractor(s)

Status: **Design**

Scale(s): AAV, PAA1

Designed	NDC Consultants	Sign.		Date	02/12/10
Drawn	Adam Bourne	Sign.		Date	02/12/10
Checked	Joe Winter	Sign.		Date	02/12/10
Approved	Chris Tappenden	Sign.		Date	02/12/10

Project: **FTN / GSM-R Project Stage 2 Design**

Drawing Title: **Ash Vale Signal Box (2326) to Frimley Station (2412)**

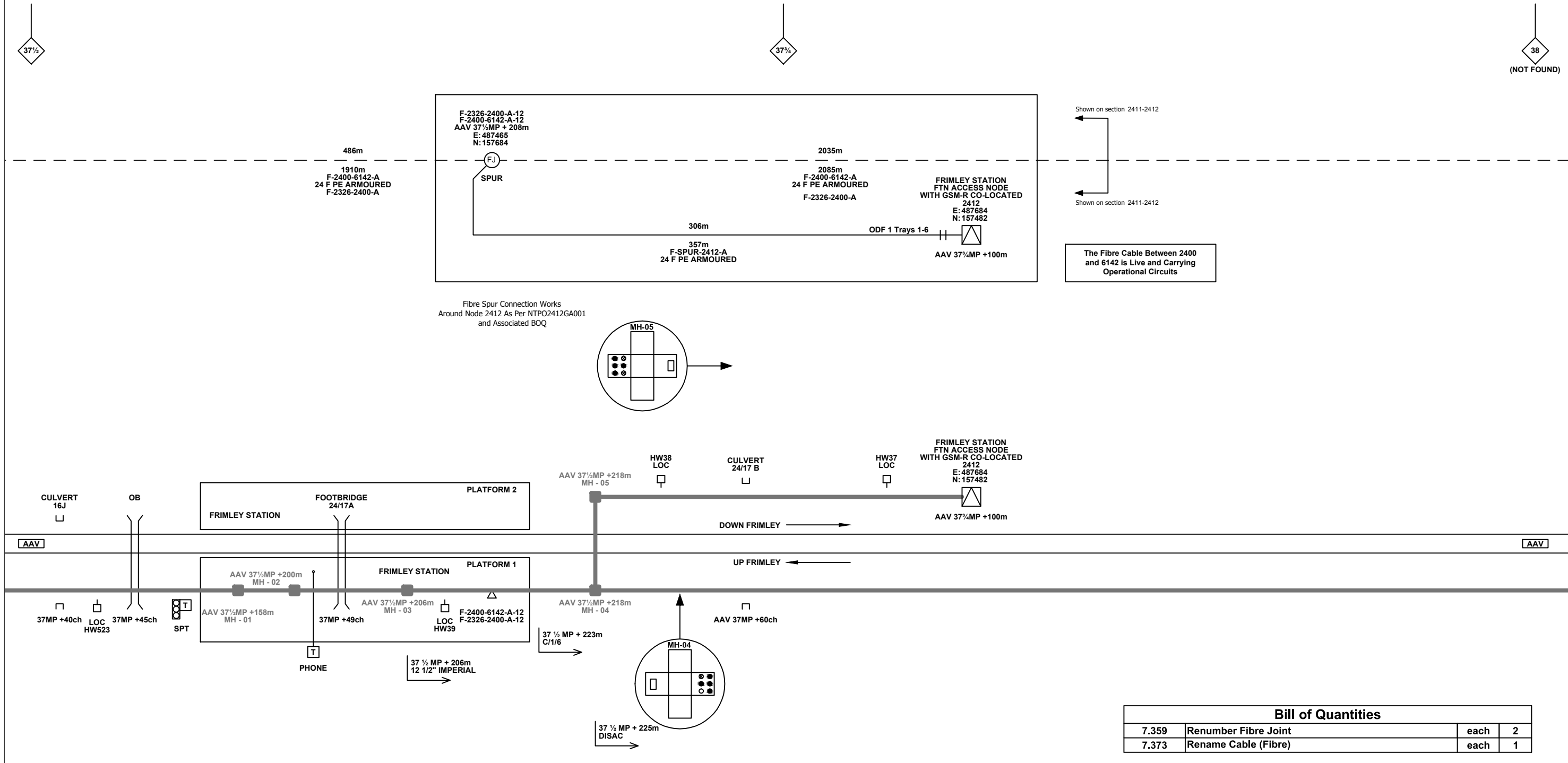
**Network Rail**

FTN/GSM-R Project  
Tournament House  
Paxington  
London  
W2 1HA

Alternative Reference: See Layout Tab A3 Sheets 7 and 8

Drawing Number: NTP0\SLD\2326\2412\001

Sheet: 4 of 4  
Revision: B



Shown on section 2411-2412

Shown on section 2411-2412

The Fibre Cable Between 2400 and 6142 is Live and Carrying Operational Circuits

Fibre Spur Connection Works  
Around Node 2412 As Per NTPO2412GA001  
and Associated BOQ

Bill of Quantities			
7.359	Renumbr Fibre Joint	each	2
7.373	Rename Cable (Fibre)	each	1

**Legend**

Cabinet and Verts	Copper Joint	Trough Duct Cable Tray	Signal Box	FTN Core Node	Screen Joint Routeworks	Overbridge	Signal	Engineer's Line Reference	Crossing	GAS — GAS — Gas Line
Cabinet with Regenerator and Verts	Fibre Joint	Cable - Type Identified by FTN Code	Electrical Control Room	Core Node with GSM-R Colocated	Copper Joint Routeworks	Underbridge	Vehicle Access Point	Mile Post	Gantry	HV — HV — HV Cable
<b>KEY</b>	Screening Conductor Joint with/without Earth	Status - as per Key Below	Manhole	FTN Access Node	Cabinet Routeworks	Manhole details: Cross-To be used, Filled-In use, Clear-Empty	Pedestrian Access Point	Platform	W — W — Water	
Proposed Fibre & Civils Elements are shown in RED		All Existing Elements are shown in BLACK	Mid Length Sheath Gap Fibre	FTN Access Node with GSM-R Colocated	Fibre Joint Routeworks	Tunnel	Earth Farm	Telephone	Cable Pull	AC Stanchion
Proposed Copper Elements are shown in BLUE		Existing Fibre Cable	Sheath Gap Copper				Buffer Stop		Copper Blue Fibre Red Screen Green	
Proposed Screening Elements are shown in MAGENTA		Existing Copper Cable								
All Recoveries are shown in GREEN		Existing Screen Cable								

Notes

B	02/12/10	Stage 2 Design - First Issue Redrafted from NTPOSLD23262412001A.dwg	AB	JW	CT
A	07/07/08	Final Issue	MT	DH	SW
DA	28/05/08	First Issue	MT	DH	SW
Rev	Date	Description of Revisions	Drawn	Chkd	Appr

Contractor(s)

Unit 4 Apex Park, Wainwright Road, Worcester, Worcestershire, WR4 9FN. Tel: 01905 756000

Status: **Design**

Scale(s): NTS

ELR & Mileage: AAV, PAA1

Designed	NDC Consultants	Sign.	Date	02/12/10
Drawn	Adam Bourne	Sign.	Date	02/12/10
Checked	Joe Winter	Sign.	Date	02/12/10
Approved	Chris Tappenden	Sign.	Date	02/12/10
Project	FTN / GSM-R Project Stage 2 Design			
Drawing Title	Ash Vale Signal Box (2326) to Frimley Station (2412)			

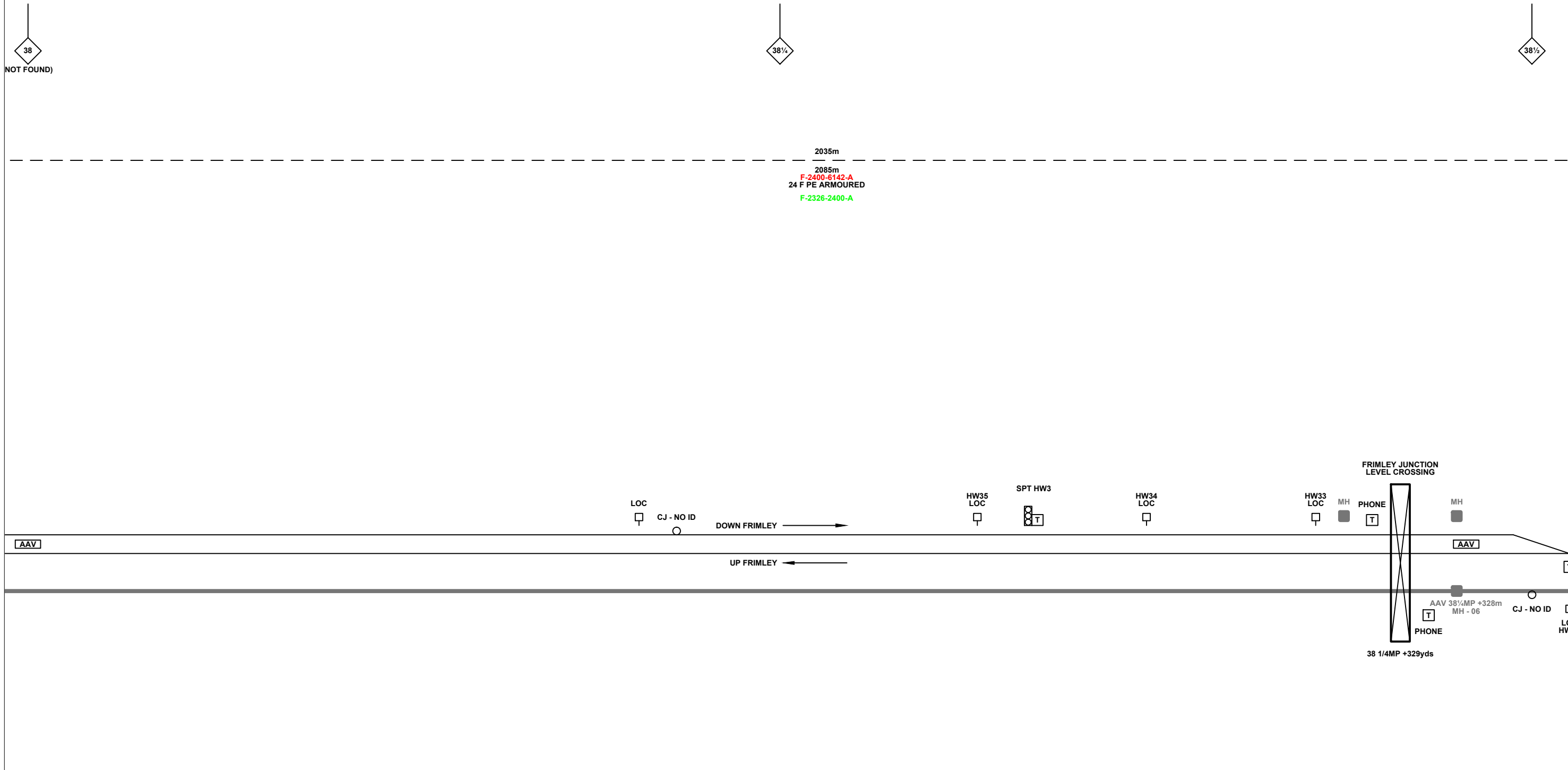
FTN/GSM-R Project  
Tournament House  
Paddington  
London  
W2 1HA

Alternative Reference: See Layout Tab 841 x 297 Sheet 1

Drawing Number: NTPO\SLD\2326\2412\001

Sheet 1 of 7

Revision: B



**Legend**

Cabinet and Verts	Copper Joint	Trough Duct Cable Tray	Signal Box	FTN Core Node	Screen Joint Routeworks	Overbridge	Signal	Engineer's Line Reference	Crossing	GAS — GAS — Gas Line
Cabinet with Regenerator and Verts	Fibre Joint	Cable - Type Identified by FTN Code	Electrical Control Room	Core Node with GSM-R Colocated	Copper Joint Routeworks	Underbridge	Vehicle Access Point	Mile Post	Gantry	HV — HV — HV Cable
<b>KEY</b>	Screening Conductor Joint with/without Earth	Status - as per Key Below	Manhole	FTN Access Node	Cabinet Routeworks	Tunnel	Pedestrian Access Point	Platform	SEW — SEW — Sewer	LV — LV — LV Cable
Proposed Fibre & Civils Elements are shown in RED		All Existing Elements are shown in BLACK	Mid Length Sheath Gap Fibre	FTN Access Node with GSM-R Colocated	Fibre Joint Routeworks	Earth Farm	Buffer Stop	Telephone	W — W — Water	Cable Pull
Proposed Copper Elements are shown in BLUE		Existing Fibre Cable	Sheath Gap Copper						AC Stanchion	TEL — TEL — Telecoms
Proposed Screening Elements are shown in MAGENTA		Existing Copper Cable								
All Recoveries are shown in GREEN		Existing Screen Cable								

Notes

Rev	Date	Description of Revisions	Drawn	Chkd	Appr
B	02/12/10	Stage 2 Design - First Issue Redrafted from NTPOSLD23262412001A.dwg	AB	JW	CT
A	07/07/08	Final Issue	MT	DH	SW
DA	28/05/08	First Issue	MT	DH	SW

Contractor(s)

Unit 4 Apex Park, Wainwright Road, Worcester, Worcestershire, WR4 9FN. Tel: 01905 756000

Status: **Design**

Scale(s): NTS

ELR & Mileage: AAV, PAA1

Designed	NDC Consultants	Sign.	Date	02/12/10
Drawn	Adam Bourne	Sign.	Date	02/12/10
Checked	Joe Winter	Sign.	Date	02/12/10
Approved	Chris Tappenden	Sign.	Date	02/12/10
Project	FTN / GSM-R Project Stage 2 Design			
Drawing Title	Ash Vale Signal Box (2326) to Frimley Station (2412)			

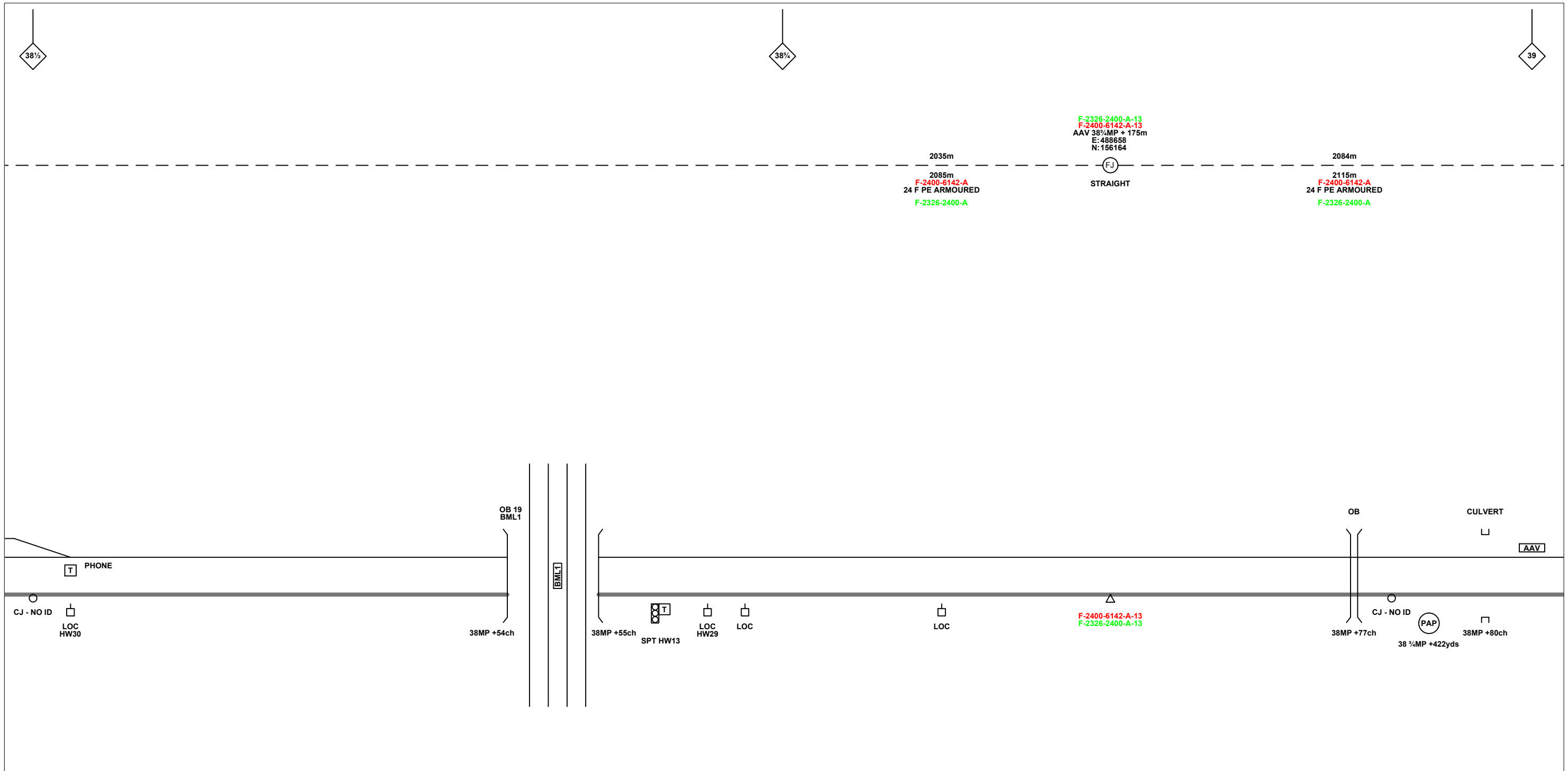
FTN/GSM-R Project  
Tournament House  
Paddington  
London  
W2 1HA

Alternative Reference: See Layout Tab 841 x 297 Sheet 1

Drawing Number: NTPO\SLD\2326\2412\001

Sheet: 2 of 7

Revision: B



**Legend**

Cabinet and Verts	Copper Joint	Trough Duct Cable Tray	Signal Box	FTN Core Node	Screen Joint Routeworks	Overbridge	Signal	Engineer's Line Reference	Crossing	GAS — GAS — Gas Line
Cabinet with Regenerator and Verts	Fibre Joint	Cable - Type Identified by FTN Code	Electrical Control Room	Core Node with GSM-R Colocated	Copper Joint Routeworks	Underbridge	Vehicle Access Point	Mile Post	Gantry	HV — HV — HV Cable
<b>KEY</b>	Screening Conductor Joint with/without Earth	Status - as per Key Below	Manhole	FTN Access Node	Cabinet Routeworks	Manhole details: Cross-To be used, Filled-In use, Clear-Empty	Pedestrian Access Point	Platform	SEW — SEW — Sewer	TEL — TEL — Telecoms
Proposed Fibre & Civils Elements are shown in RED		All Existing Elements are shown in BLACK	Mid Length Sheath Gap Fibre	FTN Access Node with GSM-R Colocated	Fibre Joint Routeworks	Tunnel	Earth Farm	Buffer Stop	W — W — Water	AC Stanchion
Proposed Copper Elements are shown in BLUE		Existing Fibre Cable	Sheath Gap Copper						Cable Pull	Copper Blue Fibre Red Screen Green
Proposed Screening Elements are shown in MAGENTA		Existing Copper Cable								
All Recoveries are shown in GREEN		Existing Screen Cable								

Notes

Rev	Date	Description of Revisions	Drawn	Chkd	Appr
B	02/12/10	Stage 2 Design - First Issue Redrafted from NTPOSLD23262412001A.dwg	AB	JW	CT
A	07/07/08	Final Issue	MT	DH	SW
DA	28/05/08	First Issue	MT	DH	SW

Contractor(s)

Unit 4 Apex Park, Wainwright Road, Worcester, Worcestershire, WR4 9FN. Tel: 01905 756000

Status: **Design**

Scale(s): NTS

ELR & Mileage: AAV, PAA1

Designed	NDC Consultants	Sign.	Date	02/12/10
Drawn	Adam Bourne	Sign.	Date	02/12/10
Checked	Joe Winter	Sign.	Date	02/12/10
Approved	Chris Tappenden	Sign.	Date	02/12/10
Project	FTN / GSM-R Project Stage 2 Design			
Drawing Title	Ash Vale Signal Box (2326) to Frimley Station (2412)			

FTN/GSM-R Project  
Tournament House  
Paddington  
London  
W2 1HA

Alternative Reference: See Layout Tab 841 x 297 Sheet 2

Drawing Number: NTPO\SLD\2326\2412\001

Sheet: 3 of 7

Revision: B

39 1/2

2084m  
2115m  
F-2400-6142-A  
24 F PE ARMoured  
F-2326-2400-A

39 1/2

SIG HW5R

AAV

AAV

LOC HW28

LOC HW27A

LOC HW27

**Legend**

Cabinet and Verts	Copper Joint	Trough Duct Cable Tray	Signal Box	FTN Core Node	Screen Joint Routeworks	Overbridge	Signal	Engineer's Line Reference	Crossing	GAS — GAS — Gas Line
Cabinet with Regenerator and Verts	Fibre Joint	Cable - Type Identified by FTN Code	Electrical Control Room	Core Node with GSM-R Colocated	Copper Joint Routeworks	Manhole	VAP Vehicle Access Point	Mile Post	HV — HV — HV Cable	LV — LV — LV Cable
<b>KEY</b>	Screening Conductor Joint with/without Earth	Status - as per Key Below	Mid Length Sheath Gap Fibre	FTN Access Node	Cabinet Routeworks	Manhole details: Cross-To be used Filled-In use Clear-Empty	PAP Pedestrian Access Point	Platform	SEW — SEW — Sewer	TEL — TEL — Telecoms
Proposed Fibre & Cables Elements are shown in RED		All Existing Elements are shown in BLACK	Sheath Gap Copper	FTN Access Node with GSM-R Colocated	Fibre Joint Routeworks	Tunnel	Earth Farm	Buffer Stop	W — W — Water	AC Stanchion
Proposed Copper Elements are shown in BLUE		Existing Fibre Cable							Cable Pull	Copper Blue Fibre Red Screen Green
Proposed Screening Elements are shown in MAGENTA		Existing Copper Cable								
All Recoveries are shown in GREEN		Existing Screen Cable								

Rev	Date	Description of Revisions	Drawn	Chkd	Appr
B	02/12/10	Stage 2 Design - First Issue Redrafted from NTPOSLD23262412001A.dwg	AB	JW	CT
A	07/07/08	Final Issue	MT	DH	SW
DA	28/05/08	First Issue	MT	DH	SW

Contractor(s)

Unit 4 Apex Park, Wainwright Road, Worcester, Worcestershire, WR4 9FN. Tel: 01905 756000

Status: **Design**

Scale(s): NTS

ELR & Mileage: AAV, PAA1

Designed	NDC Consultants	Sign.	Date	02/12/10
Drawn	Adam Bourne	Sign.	Date	02/12/10
Checked	Joe Winter	Sign.	Date	02/12/10
Approved	Chris Tappenden	Sign.	Date	02/12/10
Project	FTN / GSM-R Project Stage 2 Design			
Drawing Title	Ash Vale Signal Box (2326) to Frimley Station (2412)			

FTN/GSM-R Project  
Tournament House  
Paddington  
London  
W2 1HA

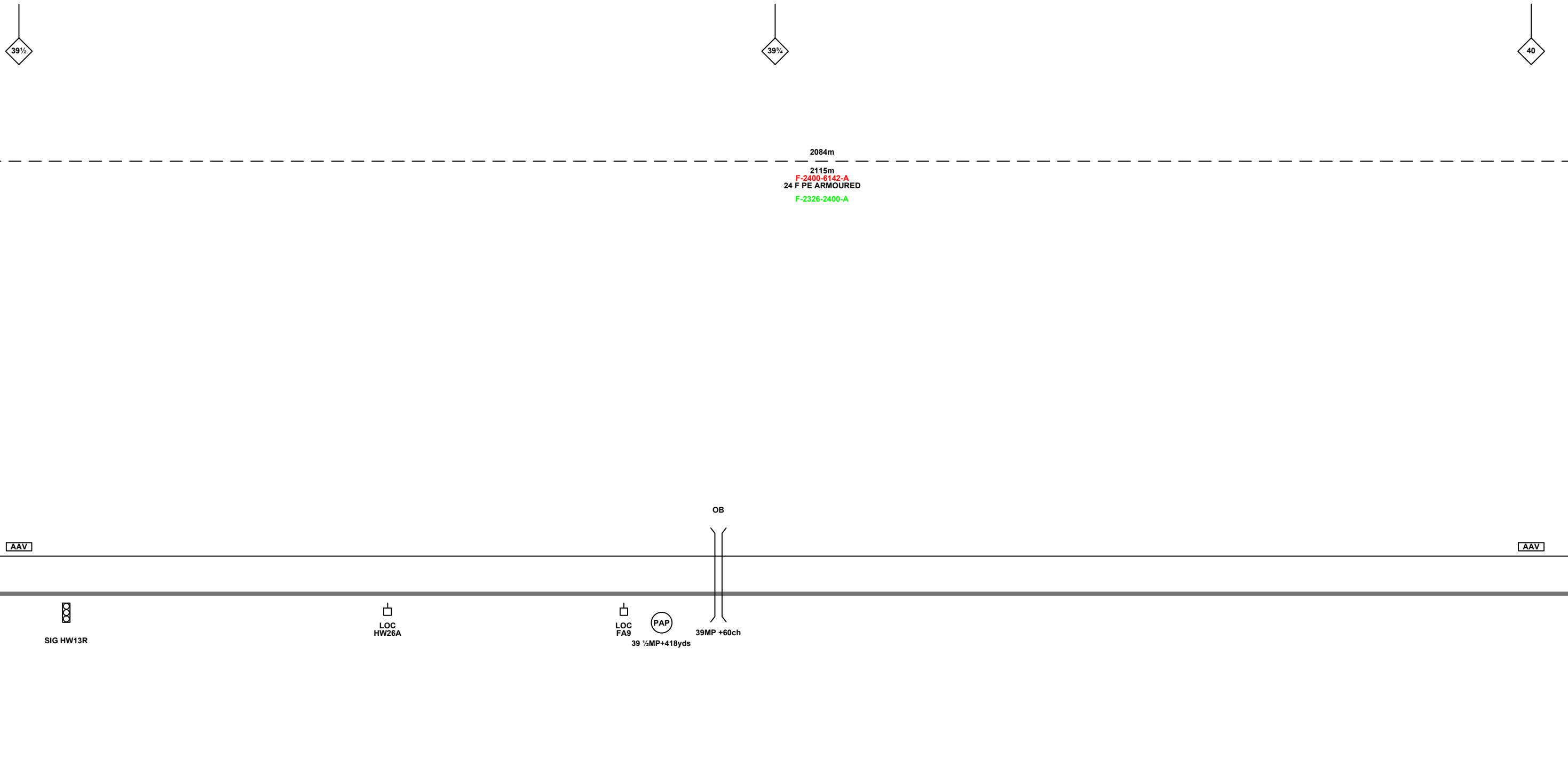
Alternative Reference: See Layout Tab 841 x 297 Sheet 2

Drawing Number: NTPO\SLD\2326\2412\001

Sheet: 4 of 7

Revision: B





**Legend**

Cabinet and Verts	Copper Joint	Trough Duct Cable Tray	Signal Box	FTN Core Node	Screen Joint Routeworks	Overbridge	Signal	Engineer's Line Reference	Crossing	GAS — GAS — Gas Line
Cabinet with Regenerator and Verts	Fibre Joint	Cable - Type Identified by FTN Code	Electrical Control Room	Core Node with GSM-R Colocated	Copper Joint Routeworks	Underbridge	Vehicle Access Point	Mile Post	Gantry	HV — HV — HV Cable
<b>KEY</b>	Screening Conductor Joint with/without Earth	Status - as per Key Below	Manhole	FTN Access Node	Cabinet Routeworks	Manhole details: Cross-To be used Filled-In use Clear-Empty	Pedestrian Access Point	Platform	SEW — SEW — Sewer	LV — LV — LV Cable
Proposed Fibre & Cables Elements are shown in RED		All Existing Elements are shown in BLACK	Mid Length Sheath Gap Fibre	FTN Access Node with GSM-R Colocated	Fibre Joint Routeworks	Tunnel	Earth Farm	Telephone	TEL — TEL — Telecoms	W — W — Water
Proposed Copper Elements are shown in BLUE		Existing Fibre Cable	Sheath Gap Copper				Buffer Stop	Cable Pull	AC Stanchion	
Proposed Screening Elements are shown in MAGENTA		Existing Copper Cable								
All Recoveries are shown in GREEN		Existing Screen Cable								

Notes

Rev	Date	Description of Revisions	Drawn	Chkd	Appr
B	02/12/10	Stage 2 Design - First Issue Redrafted from NTPOSLD23262412001A.dwg	AB	JW	CT
A	07/07/08	Final Issue	MT	DH	SW
DA	28/05/08	First Issue	MT	DH	SW

Contractor(s)

Unit 4 Apex Park, Wainwright Road, Worcester, Worcestershire, WR4 9FN. Tel: 01905 756000

Status: **Design**

Scale(s): NTS

ELR & Mileage: AAV, PAA1

Designed	NDC Consultants	Sign.	Date	02/12/10
Drawn	Adam Bourne	Sign.	Date	02/12/10
Checked	Joe Winter	Sign.	Date	02/12/10
Approved	Chris Tappenden	Sign.	Date	02/12/10
Project	FTN / GSM-R Project Stage 2 Design			
Drawing Title	Ash Vale Signal Box (2326) to Frimley Station (2412)			

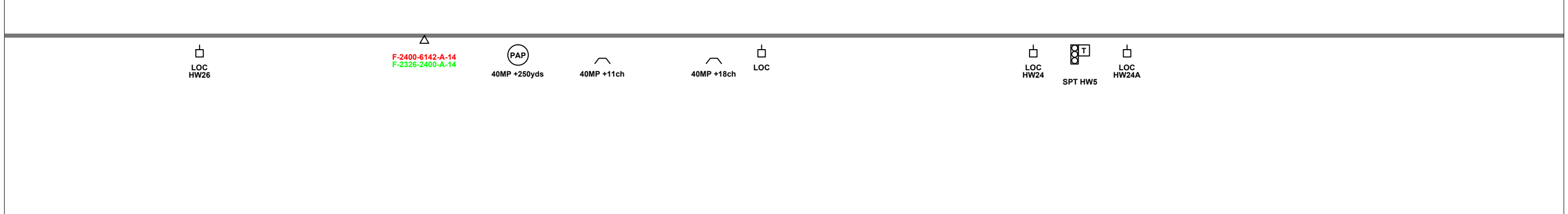
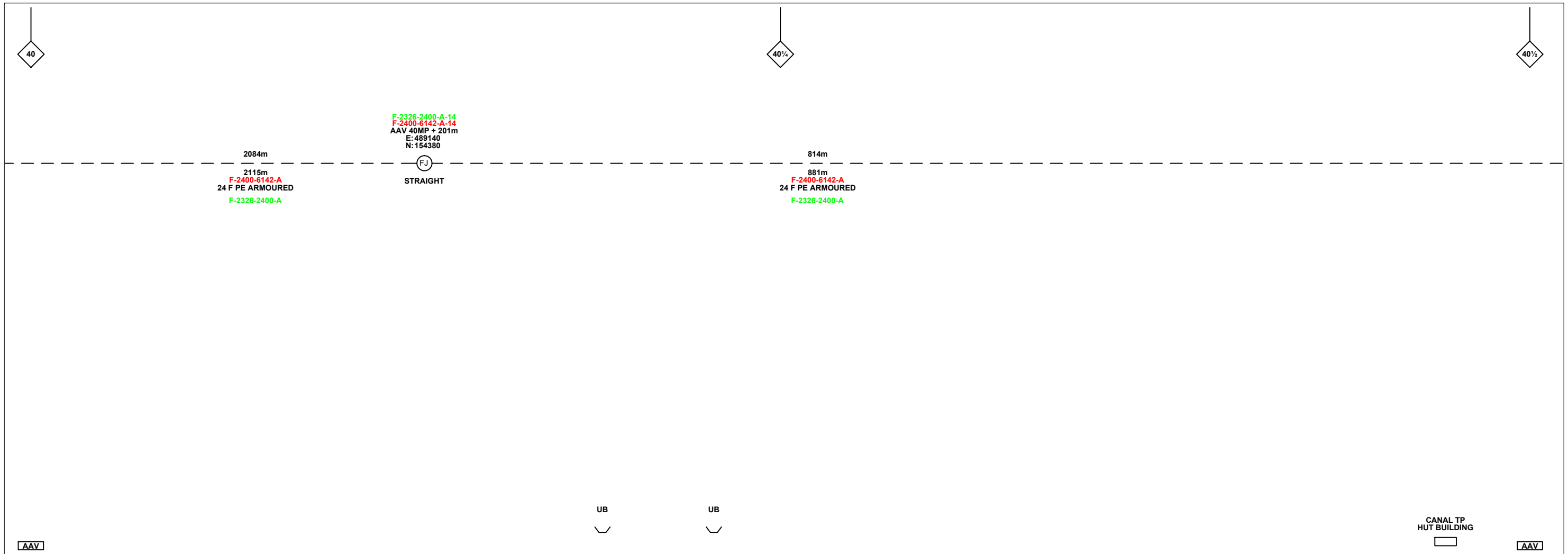
FTN/GSM-R Project  
Tournament House  
Paddington  
London  
W2 1HA

Alternative Reference: See Layout Tab 841 x 297 Sheet 3

Drawing Number: NTPO\SLD\2326\2412\001

Sheet: 5 of 7

Revision: B



**Legend**

Cabinet and Verts	Copper Joint	Trough Duct Cable Tray	Signal Box	FTN Core Node	Screen Joint Routeworks	Overbridge	Signal	Engineer's Line Reference	Crossing	GAS — GAS — Gas Line
Cabinet with Regenerator and Verts	Fibre Joint	Cable - Type Identified by FTN Code	Electrical Control Room	Core Node with GSM-R Colocated	Copper Joint Routeworks	Underbridge	Vehicle Access Point	Mile Post	Gantry	HV — HV — HV Cable
<b>KEY</b>	Screening Conductor Joint with/without Earth	Status - as per Key Below	Manhole	FTN Access Node	Cabinet Routeworks	Manhole details: Cross-To be used Filled-In use Clear-Empty	Pedestrian Access Point	Platform	SEW — SEW — Sewer	LV — LV — LV Cable
Proposed Fibre & Civils Elements are shown in RED		All Existing Elements are shown in BLACK	Mid Length Sheath Gap Fibre	FTN Access Node with GSM-R Colocated	Fibre Joint Routeworks	Tunnel	Earth Farm	Telephone	TEL — TEL — Telecoms	W — W — Water
Proposed Copper Elements are shown in BLUE		--- Existing Fibre Cable	Sheath Gap Copper				Buffer Stop	Cable Pull	AC Stanchion	
Proposed Screening Elements are shown in MAGENTA		--- Existing Copper Cable								
All Recoveries are shown in GREEN		--- Existing Screen Cable								

Notes

B	02/12/10	Stage 2 Design - First Issue Redrafted from NTPOSLD23262412001A.dwg	AB	JW	CT
A	07/07/08	Final Issue	MT	DH	SW
DA	28/05/08	First Issue	MT	DH	SW
Rev	Date	Description of Revisions	Drawn	Chkd	Appr

Contractor(s)

Unit 4 Apex Park, Wainwright Road, Worcester, Worcestershire, WR4 9FN. Tel: 01905 756000

Status: **Design**

Scale(s): NTS

ELR & Mileage: AAV, PAA1

Designed	NDC Consultants	Sign.	Date	02/12/10
Drawn	Adam Bourne	Sign.	Date	02/12/10
Checked	Joe Winter	Sign.	Date	02/12/10
Approved	Chris Tappenden	Sign.	Date	02/12/10
Project	FTN / GSM-R Project Stage 2 Design			
Drawing Title	Ash Vale Signal Box (2326) to Frimley Station (2412)			

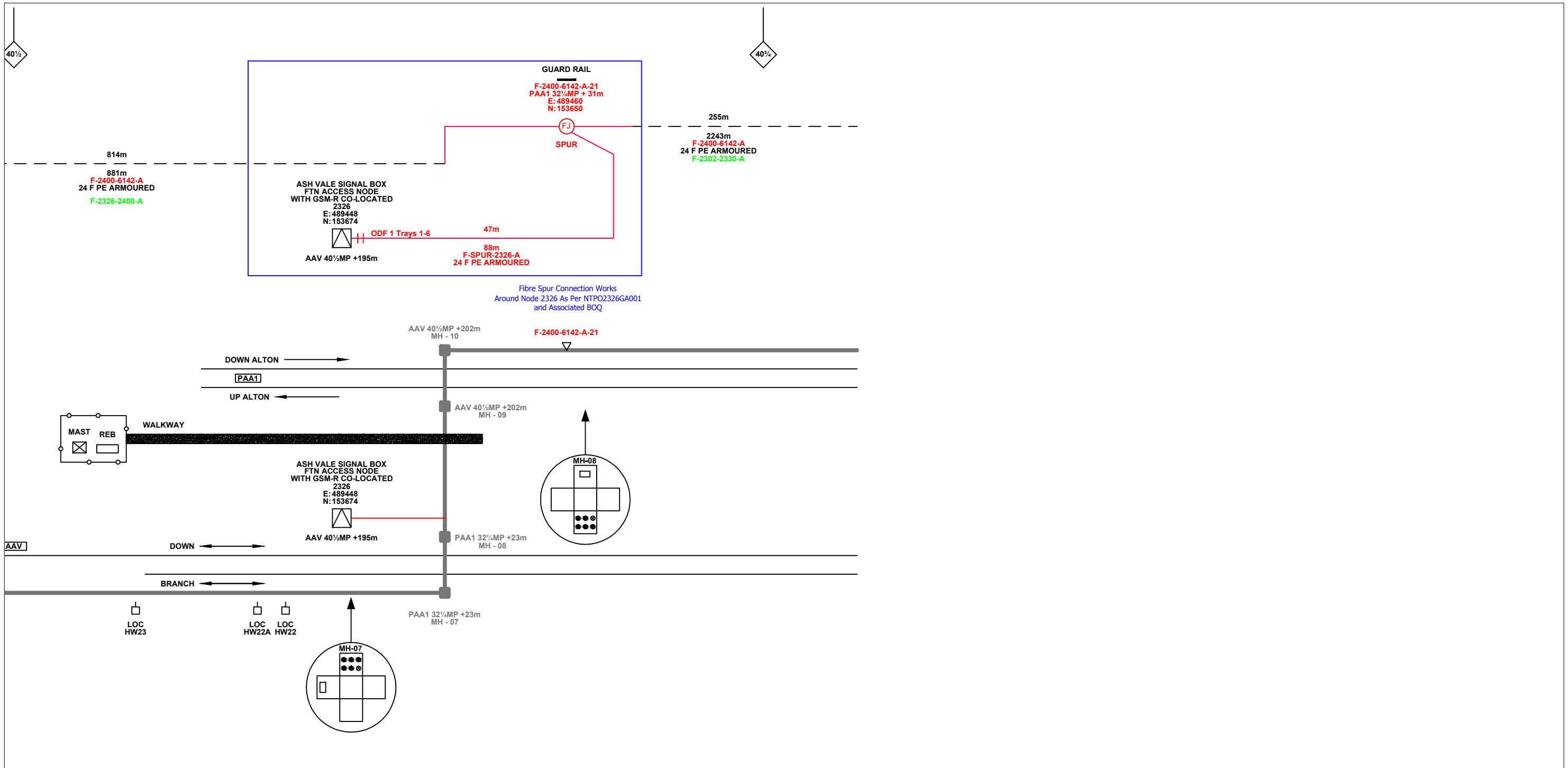
FTN/GSM-R Project  
Tournament House  
Paddington  
London  
W2 1HA

Alternative Reference: See Layout Tab 841 x 297 Sheet 3

Drawing Number: NTPO\SLD\2326\2412\001

Revision: **B**

Sheet 6 of 7



**Legend**

Cabinet and Verts	Copper Joint	Trough Duct Cable Tray	Signal Box	FTN Core Node	Screen Joint Routeworks	Overbridge	Signal	Engineer's Line Reference	Crossing	GAS — GAS — Gas Line
Cabinet with Regenerator and Verts	Fibre Joint	Cable - Type Identified by FTN Code	Electrical Control Room	Core Node with GSM-R Colocated	Copper Joint Routeworks	Underbridge	Vehicle Access Point	Mile Post	Gantry	HV — HV — HV Cable
<b>KEY</b>	Screening Conductor Joint with/without Earth	Manhole	Manhole	FTN Access Node	Cabinet Routeworks	Manhole details: Cross-To be used, Filled-In use, Clear-Empty	Pedestrian Access Point	Platform	SEW — SEW — Sewer	TEL — TEL — Telecoms
Proposed Fibre & Civils Elements are shown in RED		All Existing Elements are shown in BLACK		FTN Access Node with GSM-R Colocated	Fibre Joint Routeworks	Tunnel	Earth Farm	Telephone	W — W — Water	AC Stanchion
Proposed Copper Elements are shown in BLUE		1988m	Status - as per Key Below							
Proposed Screening Elements are shown in MAGENTA		2034m F-DIDC-RGAC-A								
All Recoveries are shown in GREEN										

Notes

Rev	Date	Description of Revisions	Drawn	Chkd	Appr
B	02/12/10	Stage 2 Design - First Issue Redrafted from NTPOSLD23262412001A.dwg	AB	JW	CT
A	07/07/08	Final Issue	MT	DH	SW
DA	28/05/08	First Issue	MT	DH	SW

Contractor(s)

Unit 4 Apex Park, Wainwright Road, Worcester, Worcestershire, WR4 9FN. Tel: 01905 756000

Status: **Design**

Scale(s): NTS

ELR & Mileage: AAV, PAA1

Designed	NDC Consultants	Sign.	Date	02/12/10
Drawn	Adam Bourne	Sign.	Date	02/12/10
Checked	Joe Winter	Sign.	Date	02/12/10
Approved	Chris Tappenden	Sign.	Date	02/12/10
Project	FTN / GSM-R Project Stage 2 Design			
Drawing Title	Ash Vale Signal Box (2326) to Frimley Station (2412)			

FTN/GSM-R Project  
Tournament House  
Paddington  
London  
W2 1HA

Alternative Reference: See Layout Tab 841 x 297 Sheet 4

Drawing Number: NTPO\SLD\2326\2412\001

Sheet: 7 of 7

Revision: B