

Legend

	Cabinet and Verts		Copper Joint		Trough Duct Cable Tray		Signal Box		FTN Core Node		Screen Joint Routeworks
	Cabinet with Regenerator and Verts		Fibre Joint		Electrical Control Room		Manhole		Core Node with GSM-R Colocated		Copper Joint Routeworks
	KEY		Screening Conductor Joint with/without Earth		Mid Length Sheath Gap Fibre		FTN Access Node		FTN Access Node with GSM-R Colocated		Cabinet Routeworks
	Proposed Fibre & Civils Elements are shown in RED		Existing Fibre Cable		Sheath Gap Copper		Tunnel		Overbridge		Signal
	Proposed Copper Elements are shown in BLUE		Existing Copper Cable		Manhole details: Cross-To be used Filled-In use Clear-Empty		Underbridge		Vehicle Access Point		Pedestrian Access Point
	Proposed Screening Elements are shown in MAGENTA		Existing Screen Cable		Gantry		Earth Form		Mast		Mile Post
	All Recoveries are shown in GREEN				Cable Pull		Platform		Telephone		

Notes

Rev	Date	Description of Revisions	Drawn	Chkd	Appr
B	22/11/12	As Built	RJT	JO	PH
A	16/08/12	Redrafted From NTPOSLD2413FABC001A.dwg	SH	JW	CT

Contractor(s)

Unit 4 Apex Park, Wainwright Road, Worcester, Worcestershire, WR4 9FN. Tel: 01905 756000

Status: **As Built**

Scale(s): BML1 ,GTW2

Designed	Stephen Holder	Sign.		Date	16/08/2012
Checked	Joe Winter	Sign.		Date	16/08/2012
Approved	Chris Tappenden	Sign.		Date	16/08/2012

Project: FTN/GSM-R Project Stage 2 As Built

Drawing Title: Farnborough Gate Retail Park (6466) to Farnborough Core Node (FABC)

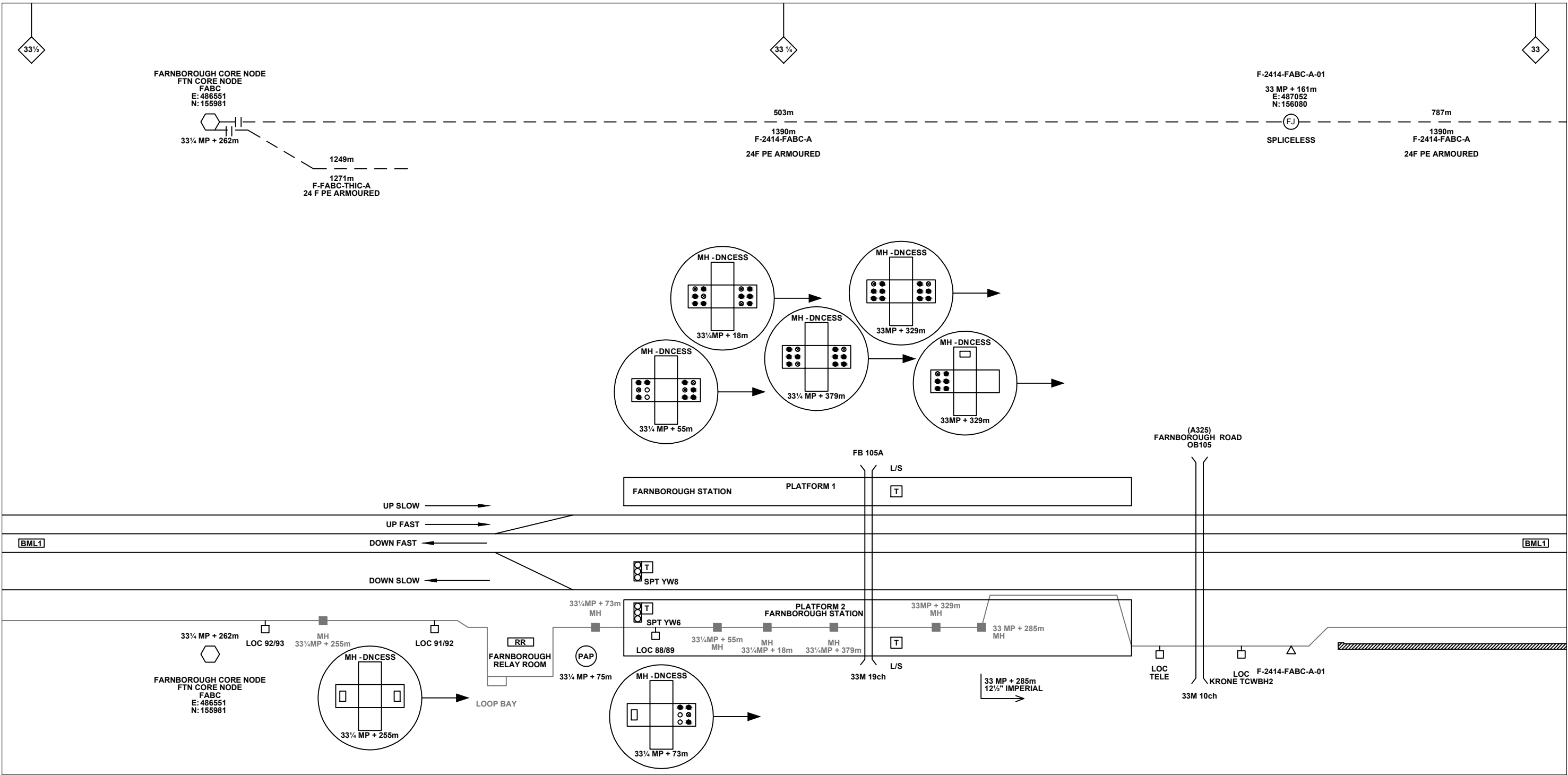
FTN/GSM-R Project
Tournament House
Passington
London
W2 1PA

Alternative Reference: See Layout Tab A3 Sheets 1 and 2

Drawing Number: NTPO\SLD\6466\FABC\001

Revision: **B**

Sheet 1 of 2



Legend

Cabinet and Verts	Copper Joint	Trough Duct Cable Tray	Signal Box	FTN Core Node	Screen Joint Routeworks	Overbridge	Signal	Engineer's Line Reference	Crossing	Gas Line
Cabinet with Regenerator and Verts	Fibre Joint	Cable - Type Identified by FTN Code	Electrical Control Room	Core Node with GSM-R Colocated	Copper Joint Routeworks	Underbridge	Vehicle Access Point	Mile Post	Gantry	HV Cable
KEY	Screening Conductor Joint with/without Earth	Manhole	Mid Length Sheath Gap Fibre	FTN Access Node	Cabinet Routeworks	Manhole details: Cross-To be used, Filled-In use, Clear-Empty	Pedestrian Access Point	Platform	Sewer	LV Cable
Proposed Fibre & Civils Elements are shown in RED		Sheath Gap Copper	FTN Access Node with GSM-R Colocated	Fibre Joint Routeworks	Tunnel	Earth Farm	Buffer Stop	Telephone	Water	Mast
Proposed Copper Elements are shown in BLUE										
Proposed Screening Elements are shown in MAGENTA										
All Recoveries are shown in GREEN										
All Existing Elements are shown in BLACK										
Existing Fibre Cable										
Existing Copper Cable										
Existing Screen Cable										

Notes

B	22/11/12	As Built	RJT	JO	PH
A	16/08/12	Redrafted From NTPOSLD2413FABC001A.dwg	SH	JW	CT
Rev	Date	Description of Revisions	Drawn	Chkd	Appr

Contractor(s)

Unit 4 Apex Park, Wainwright Road, Worcester, Worcestershire, WR4 9FN. Tel: 01905 756000

Status: **As Built**

Scale(s): NTS

ELR & Mileage: BML1 ,GTW2

Designed		Sign.		Date	
Drawn	Stephen Holder	Sign.		Date	16/08/2012
Checked	Joe Winter	Sign.		Date	16/08/2012
Approved	Chris Tappenden	Sign.		Date	16/08/2012
Project	FTN/GSM-R Project Stage 2 As Built				
Drawing Title	Farnborough Gate Retail Park (6466) to Farnborough Core Node (FABC)				

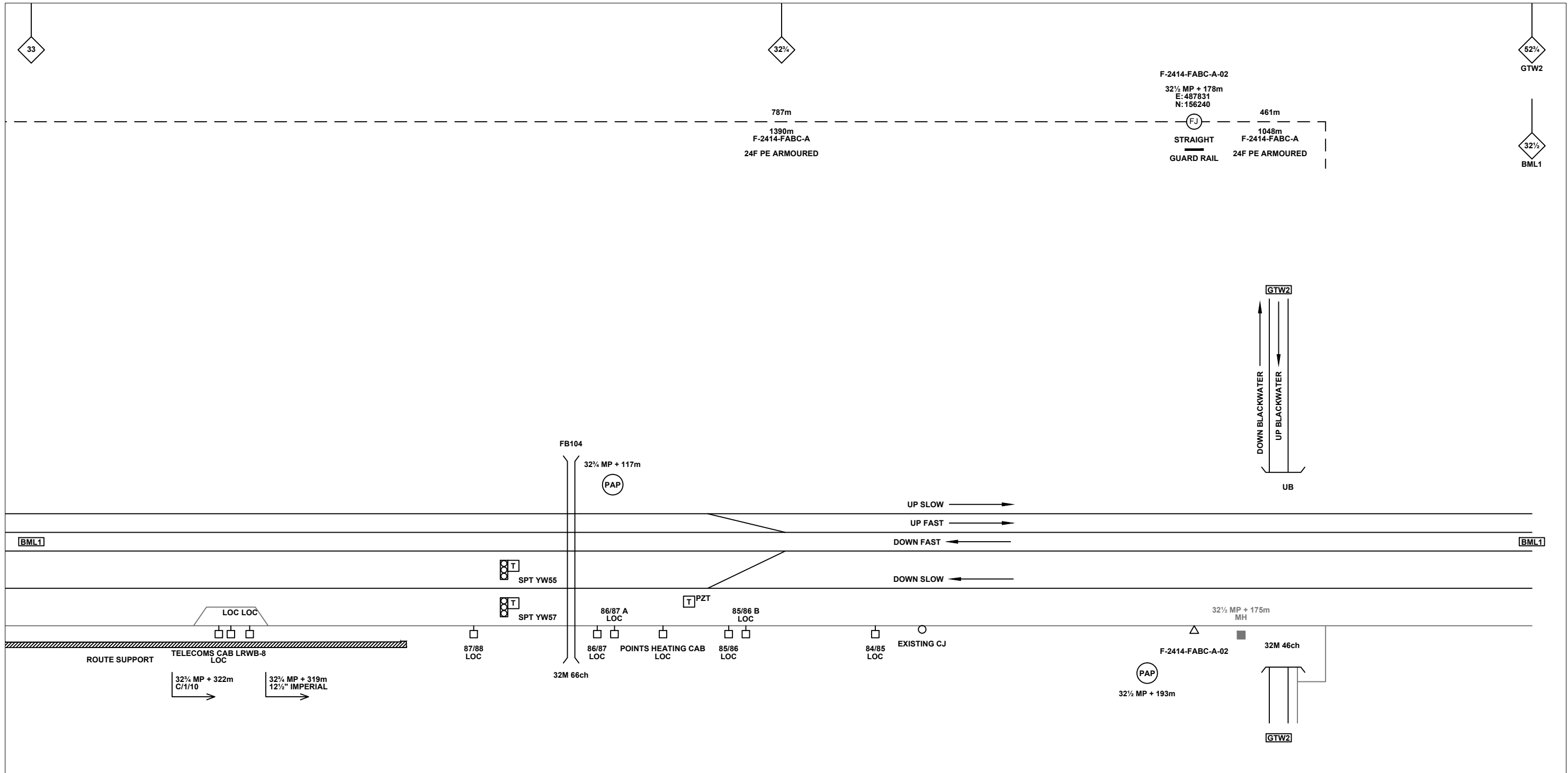
FTN/GSM-R Project
Tournament House
Paddington
London
W2 1HA

Alternative Reference: See Layout Tab 841 x 297 Sheet 1

Drawing Number: NTPO\SLD\6466\FABC\001

Sheet: 1 of 4

Revision: B



Legend

Cabinet and Verts	Copper Joint	Trough Duct Cable Tray	Signal Box	FTN Core Node	Screen Joint Routeworks	Overbridge	Signal	Engineer's Line Reference	Crossing	Gas Line
Cabinet with Regenerator and Verts	Fibre Joint	Cable - Type Identified by FTN Code	Electrical Control Room	Core Node with GSM-R Colocated	Copper Joint Routeworks	Underbridge	Vehicle Access Point	Mile Post	Gantry	HV Cable
KEY	Screening Conductor Joint with/without Earth	Manhole	Mid Length Sheath Gap Fibre	FTN Access Node	Cabinet Routeworks	Manhole details: Cross-To be used, Filled-In use, Clear-Empty	Pedestrian Access Point	Platform	Sewer	LV Cable
Proposed Fibre & Civils Elements are shown in RED	All Existing Elements are shown in BLACK	Existing Fibre Cable	Sheath Gap Copper	FTN Access Node with GSM-R Colocated	Fibre Joint Routeworks	Tunnel	Earth Farm	Buffer Stop	Telephone	Water
Proposed Copper Elements are shown in BLUE	1988m	Existing Copper Cable	Status - as per Key Below							
Proposed Screening Elements are shown in MAGENTA	2034m	Existing Screen Cable								
All Recoveries are shown in GREEN	F-DIDC-RGAC-A									

Notes

Rev	Date	Description of Revisions	Drawn	Chkd	Appr
B	22/11/12	As Built	RJT	JO	PH
A	16/08/12	Redrafted From NTPOSLD2413FABC001A.dwg	SH	JW	CT

Contractor(s)

Unit 4 Apex Park, Wainwright Road, Worcester, Worcestershire, WR4 9FN. Tel: 01905 756000

Status: **As Built**

Scale(s): NTS

ELR & Mileage: BML1, GTW2

Designed	Stephen Holder	Sign.		Date	16/08/2012
Checked	Joe Winter	Sign.		Date	16/08/2012
Approved	Chris Tappenden	Sign.		Date	16/08/2012
Project	FTN/GSM-R Project Stage 2 As Built				
Drawing Title	Farnborough Gate Retail Park (6466) to Farnborough Core Node (FABC)				

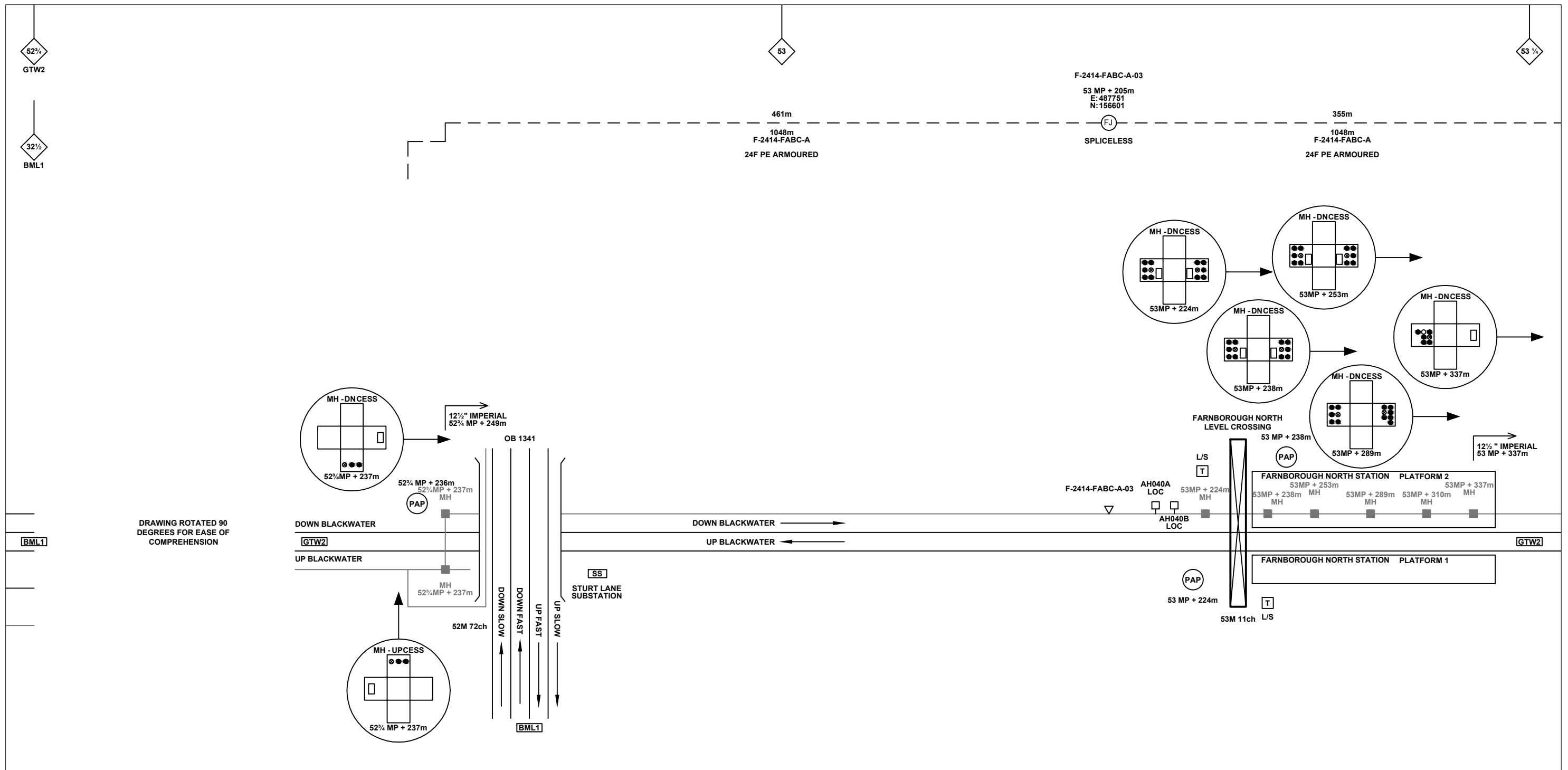
FTN/GSM-R Project
Tournament House
Paddington
London
W2 1HA

Alternative Reference: See Layout Tab 841 x 297 Sheet 1

Drawing Number: NTPO\SLD\6466\FABC\001

Sheet: 2 of 4

Revision: B



Legend

Cabinet and Verts	Copper Joint	Trough Duct Cable Tray	Signal Box	FTN Core Node	Screen Joint Routeworks	Overbridge	Signal	Engineer's Line Reference	Gas Line
Cabinet with Regenerator and Verts	Fibre Joint	Cable - Type Identified by FTN Code	Electrical Control Room	Core Node with GSM-R Colocated	Copper Joint Routeworks	Underbridge	Vehicle Access Point	Mile Post	HV Cable
KEY	Screening Conductor Joint with/without Earth	Manhole	Mid Length Sheath Gap Fibre	FTN Access Node	Cabinet Routeworks	Tunnel	Pedestrian Access Point	Platform	LV Cable
Proposed Fibre & Civils Elements are shown in RED	All Existing Elements are shown in BLACK	Manhole Status - as per Key Below	Sheath Gap Copper	FTN Access Node with GSM-R Colocated	Fibre Joint Routeworks	Earth Farm	Buffer Stop	Telephone	Sewer
Proposed Copper Elements are shown in BLUE	Existing Fibre Cable								Telecoms
Proposed Screening Elements are shown in MAGENTA	Existing Copper Cable								Water
All Recoveries are shown in GREEN	Existing Screen Cable								Cable Pull
									Mast

Notes

B	22/11/12	As Built	RJT	JO	PH
A	16/08/12	Redrafted From NTPOSLD2413FABC001A.dwg	SH	JW	CT
Rev	Date	Description of Revisions	Drawn	Chkd	Appr

Contractor(s)

ndc consultants

Unit 4 Apex Park, Wainwright Road, Worcester, Worcestershire, WR4 9FN. Tel: 01905 756000

Status: **As Built**

Scale(s): NTS

ELR & Mileage: BML1, GTW2

Designed	Sign.	Date
Drawn	Stephen Holder	16/08/2012
Checked	Joe Winter	16/08/2012
Approved	Chris Tappenden	16/08/2012
Project	FTN/GSM-R Project Stage 2 As Built	
Drawing Title	Farnborough Gate Retail Park (6466) to Farnborough Core Node (FABC)	

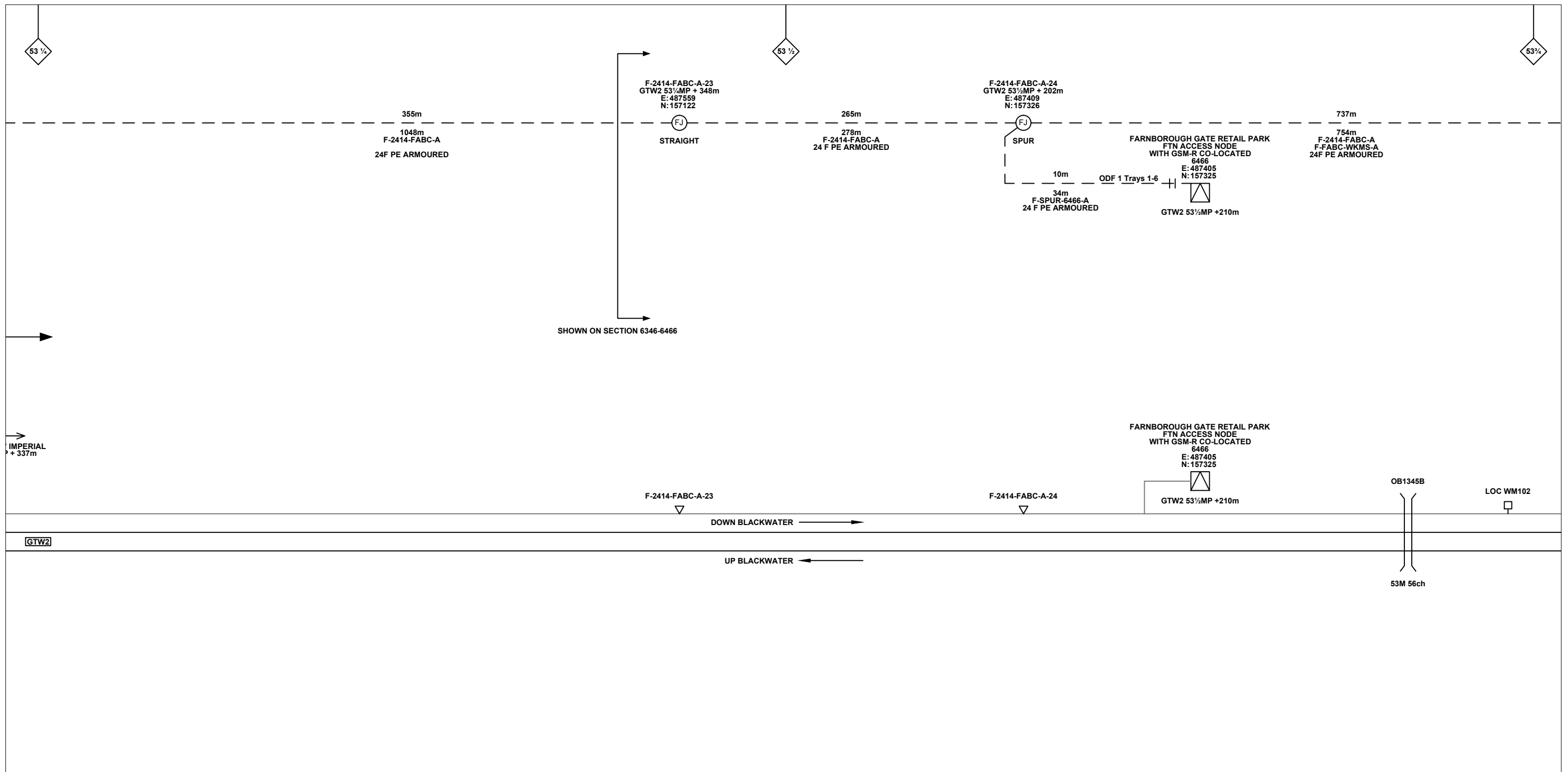
FTN/GSM-R Project
Tournament House
Paddington
London
W2 1HA

Alternative Reference: See Layout Tab 841 x 297 Sheet 2

Drawing Number: NTPO\SLD\6466\FABC\001

Sheet: 3 of 4

Revision: B



Legend

Cabinet and Verts	Copper Joint	Trough Duct Cable Tray	Signal Box	FTN Core Node	Screen Joint Routeworks	Overbridge	Signal	Engineer's Line Reference	Crossing	Gas Line
Cabinet with Regenerator and Verts	Fibre Joint	Cable - Type Identified by FTN Code	Electrical Control Room	Core Node with GSM-R Colocated	Copper Joint Routeworks	Manhole	Vehicle Access Point	Mile Post	Gantry	HV Cable
KEY	Screening Conductor Joint with/without Earth	Status - as per Key Below	Mid Length Sheath Gap Fibre	FTN Access Node	Cabinet Routeworks	Sheath Gap Copper	Pedestrian Access Point	Platform	Sewer	LV Cable
Proposed Fibre & Civils Elements are shown in RED	Existing Fibre Cable	Existing Copper Cable	Existing Screen Cable	FTN Access Node with GSM-R Colocated	Fibre Joint Routeworks	Tunnel	Earth Farm	Telephone	Water	Copper Blue Fibre
Proposed Copper Elements are shown in BLUE							Buffer Stop			Screen Green
Proposed Screening Elements are shown in MAGENTA										Mast
All Recoveries are shown in GREEN										

				Unit 4 Apex Park, Wainwright Road, Worcester, Worcestershire, WR4 9FN. Tel: 01905 756000		Designed: _____ Sign: _____ Date: _____ Drawn: Stephen Holder Sign: <i>[Signature]</i> Date: 16/08/2012 Checked: Joe Winter Sign: <i>[Signature]</i> Date: 16/08/2012 Approved: Chris Tappenden Sign: <i>[Signature]</i> Date: 16/08/2012			
Contractor(s)		Status: As Built		Drawing Title: Farnborough Gate Retail Park (6466) to Farnborough Core Node (FABC)		Project: FTN/GSM-R Project Stage 2 As Built		FTN/GSM-R Project Tournament House Paddington London W2 1HA	
Alternative Reference: See Layout Tab 841 x 297 Sheet 2		Scale(s): NTS		ELR & Mileage: BML1, GTW2		Drawing Number: NTPO\SLD\6466\FABC\001		Sheet: 4 of 4 Revision: B	
Revision: B		Redrafted From: NTPOSLD2413FABC001A.dwg		Drawn: SH		Chkd: JW		Appr: CT	