

Legend

KEY											
Proposed Fibre & Civils Elements are shown in RED	All Existing Elements are shown in BLACK										
Proposed Copper Elements are shown in BLUE	Existing Fibre Cable										
Proposed Screening Elements are shown in MAGENTA	Existing Copper Cable										
All Recoveries are shown in GREEN	Existing Screen Cable										

Notes

C	31/01/13	As Built	RM	JH	IA
B	04.01.11	Amends as per NWR Design Review	DA	JW	CT
A	18.11.10	Redrafted from GSCS-WPDA As-built SLD.dwg	MB	JW	CT
Rev	Date	Description of Revisions	Drawn	Chkd	Appr

Linbrooke
Total Network Solutions

As Built

ELR & Mileage: WPH1

Contractor(s): NTS

Designed	Sign.	Date
Drawn	Mike Bonner	18.11.10
Checked	Joe Winter	18.11.10
Approved	Chris Tappenden	18.11.10
Project	FTN / GSM-R Project Stage 2	
Drawing Title	Worplesdon (2304) to Guildford SB (GSCS)	

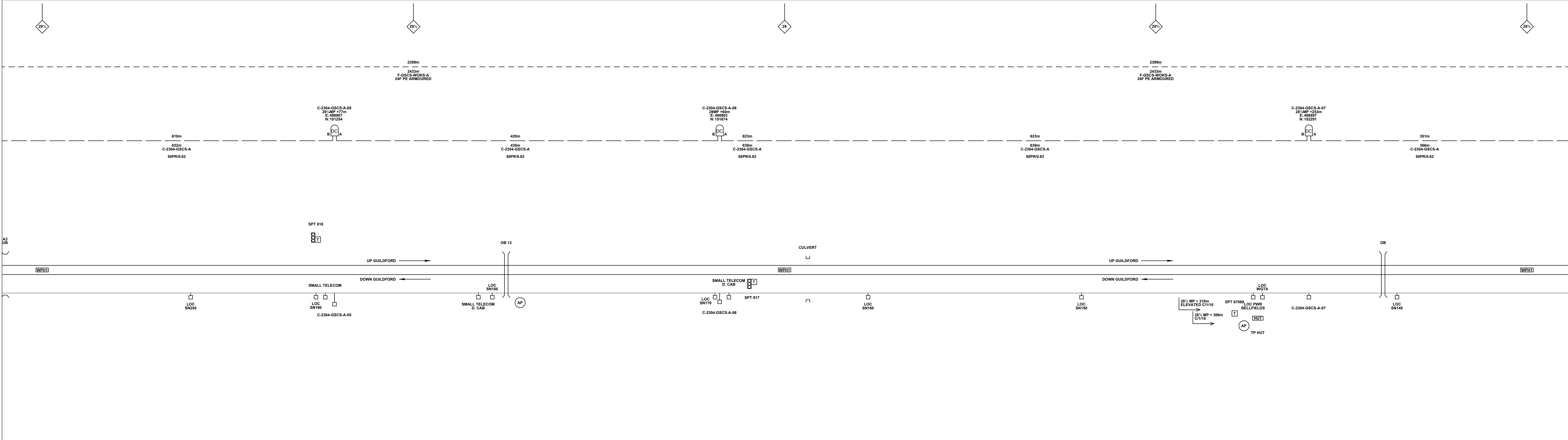
Network Rail

FTN/GSM-R Project
Tournament House
Paddington
London
W2 1HA

Alternative Reference: See Layout Tab A3 Sheets 1 and 2

Drawing Number: NTPO\SLD\2304\GSCS\001

Sheet: 1 of 3
Revision: C



Legend

KEY	Proposed Fibre & Civils Elements are shown in RED	All Existing Elements are shown in BLACK									
	Proposed Copper Elements are shown in BLUE										
	Proposed Screening Elements are shown in MAGENTA										
	All Recoveries are shown in GREEN										

Notes

C	31/01/13	As Built	RM	JH	IA
B	04.01.11	Amends as per NWR Design Review	DA	JW	CT
A	18.11.10	Redrafted from GSCS-WPDA As-built SLD.dwg	MB	JW	CT
Rev	Date	Description of Revisions	Drawn	Chkd	Appr

Contractor(s)

Linbrooke
Total Network Solutions

As Built

ELR & Mileage
WPH1

Designed	Sign.	Date
Drawn	Mike Bonner	18.11.10
Checked	Joe Winter	18.11.10
Approved	Chris Tappenden	18.11.10
Project	FTN / GSM-R Project Stage 2	
Drawing Title	Worpleston (2304) to Guildford SB (GSCS)	

Network Rail

FTN/GSM-R Project
Tournament House
Paddington
London
W2 1HA

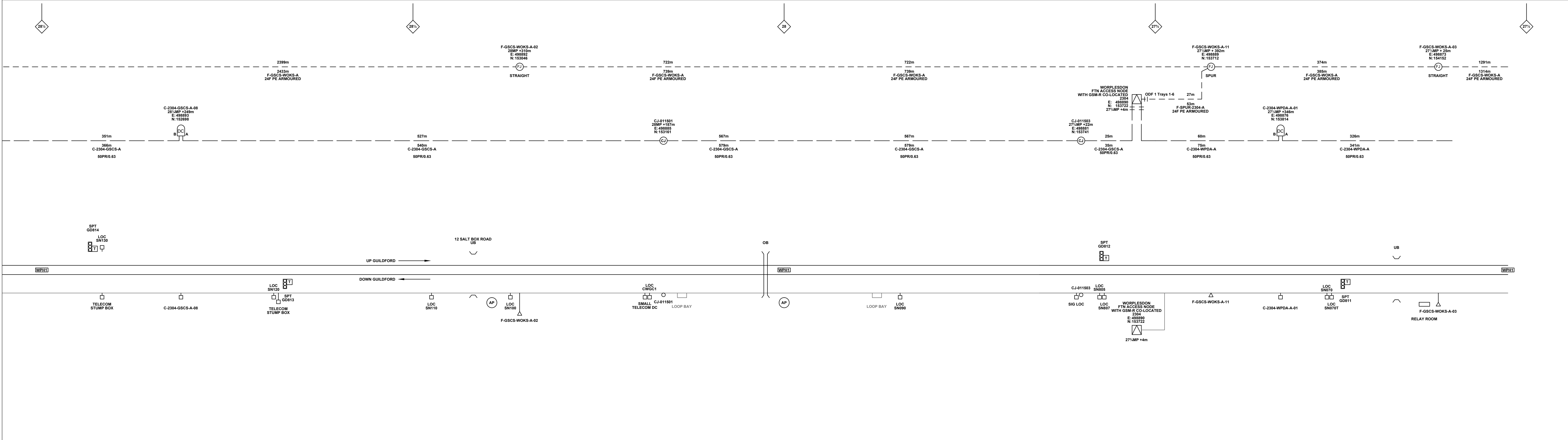
Alternative Reference
See Layout Tab A3 Sheets 3 and 4

Drawing Number
NTPO\SLD\2304\GSCS\001

Sheet
2 of 3

Revision
C

Sheet Size 841x297



Legend

Cabinet and Verts	Copper Joint	Trough Duct Cable Tray	Signal Box	FTN Core Node	Screen Joint Routeworks	Manhole details: Cross-To be used Filled-In use Clear-Empty	Overbridge	Signal	Engineer's Line Reference	Crossing	Gas Line
Cabinet with Regenerator and Verts	Fibre Joint	Cable - Type Identified by FTN Code	Electrical Control Room	Core Node with GSM-R Colocated	Copper Joint Routeworks	Manhole	Underbridge	Vehicle Access Point	Mile Post	Gantry	HV Cable
KEY	Screening Conductor Joint with/without Earth	Status - as per Key Below	Mid Length Sheath Gap Fibre	FTN Access Node	Cabinet Routeworks	Sheath Gap Copper	Tunnel	Pedestrian Access Point	Platform	Sewer	LV Cable
Proposed Fibre & Civils Elements are shown in RED		All Existing Elements are shown in BLACK	FTN Access Node with GSM-R Colocated	Fibre Joint Routeworks	Earth Farm	Buffer Stop	Telephone	Copper Pull	AC Stanchion	Water	

Notes

C	31/01/13	As Built	RM	JH	IA
B	04.01.11	Amends as per NWR Design Review	DA	JW	CT
A	18.11.10	Redrafted from GSCS-WPDA As-built SLD.dwg	MB	JW	CT
Rev	Date	Description of Revisions	Drawn	Chkd	Appr

Linbrooke
Total Network Solutions

As Built

ELR & Mileage
WPH1

Designed	Sign.	Date
Drawn	Mike Bonner	18.11.10
Checked	Joe Winter	18.11.10
Approved	Chris Tappenden	18.11.10
Project	FTN / GSM-R Project Stage 2	
Drawing Title	Worplesdon (2304) to Guildford SB (GSCS)	

Network Rail

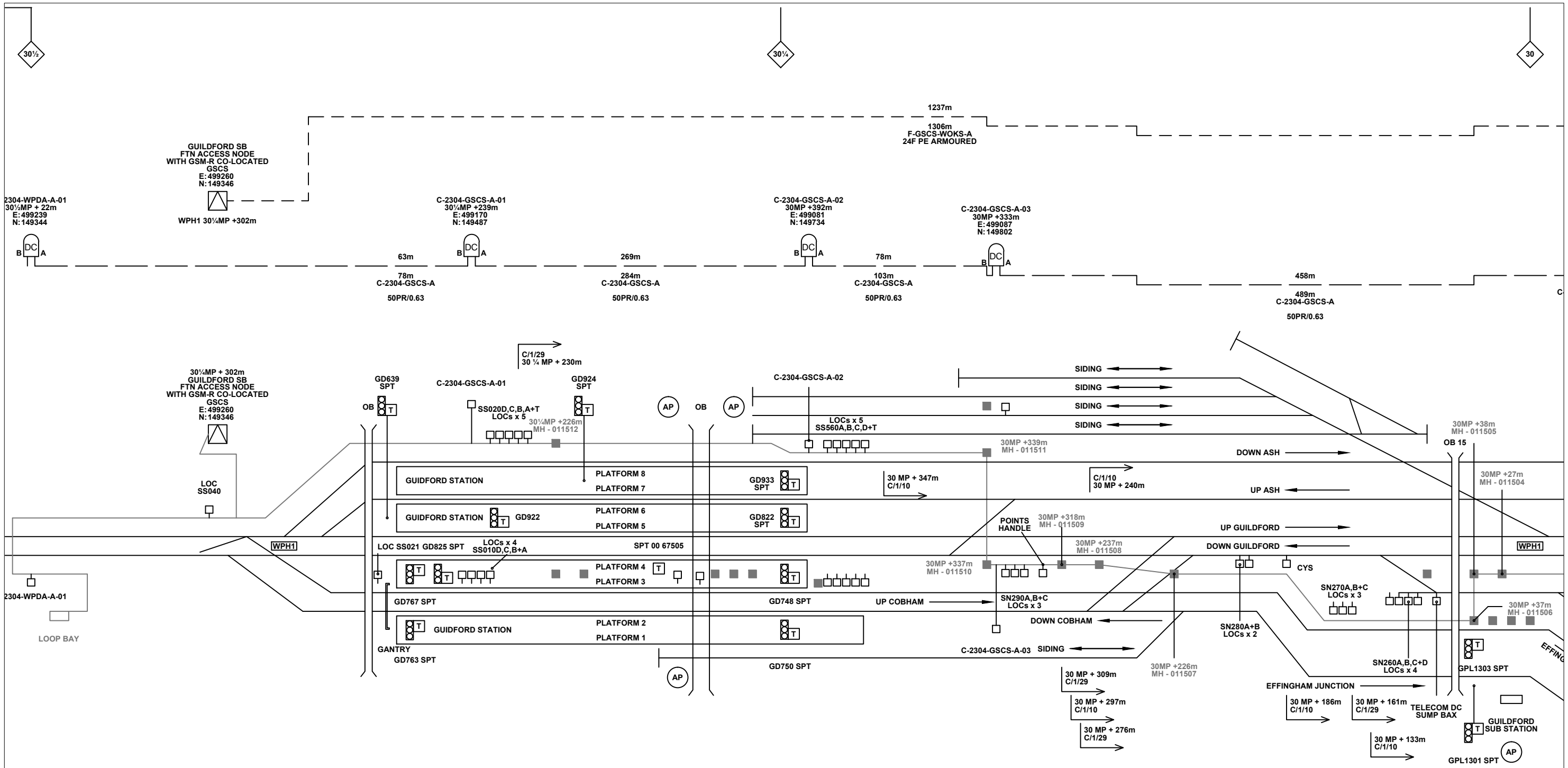
FTN/GSM-R Project
Tournament House
Paddington
London
W2 1HA

Alternative Reference
See Layout Tab A3 Sheets 5 and 6

Drawing Number
NTPO\SLD\2304\GSCS\001

Sheet
3 of 3

Revision
C



Legend

	Cabinet and Verts		Copper Joint		Trough Duct Cable Tray		Signal Box		FTN Core Node		Screen Joint Routeworks		Overbridge		Signal		Engineer's Line Reference		Crossing		GAS	Gas Line
	Cabinet with Regenerator and Verts		Fibre Joint		Electrical Control Room		Manhole		Core Node with GSM-R Colocated		Copper Joint Routeworks		Underbridge		Vehicle Access Point		Mile Post		Gantry		HV	HV Cable
	KEY		Screening Conductor Joint with/without Earth		Cable - Type Identified by FTN Code Status - as per Key Below		Mid Length Sheath Gap Fibre		FTN Access Node		Cabinet Routeworks		Manhole details: Cross-To be used Filled-In use Clear-Empty		Pedestrian Access Point		Platform		Water		LV	LV Cable
	Proposed Fibre & Civils Elements are shown in RED		Existing Fibre Cable		Sheath Gap Fibre		FTN Access Node with GSM-R Colocated		Fibre Joint Routeworks		Tunnel		Earth Farm		Buffer Stop		Telephone		Cable Pull		SEW	Sewer
	Proposed Copper Elements are shown in BLUE		Existing Copper Cable		Screen Cable		AC Stanchion														TEL	Telecoms
	Proposed Screening Elements are shown in MAGENTA																					
	All Recoveries are shown in GREEN																					

Notes

Contractor(s)	Linbrooke Total Network Solutions				
Status	As Built				
Scale(s)	ELR & Mileage WPH1				
NTS					
Rev	Date	Description of Revisions	Drawn	Chkd	Appr
C	31/01/13	As Built	RM	JH	IA
B	04.01.11	Amends as per NWR Design Review	DA	JW	CT
A	18.11.10	Redrafted from GSCS-WPDA As-built SLD.dwg	MB	JW	CT

Designed	Sign.	Date
Drawn	Mike Bonner	18.11.10
Checked	Joe Winter	18.11.10
Approved	Chris Tappenden	18.11.10
Project		
FTN / GSM-R Project Stage 2		
Drawing Title		
Worplesdon (2304) to Guildford SB (GSCS)		

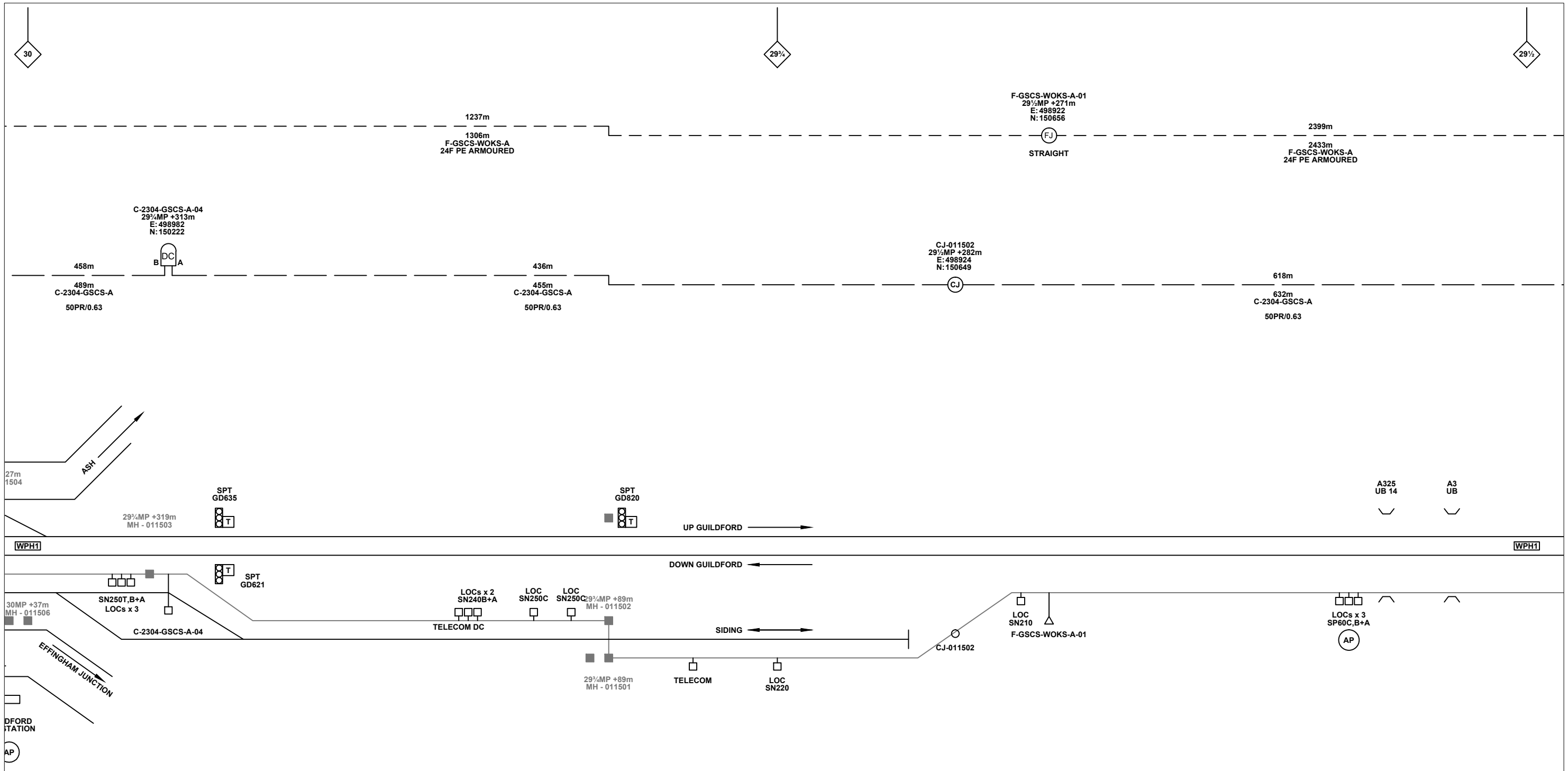
FTN/GSM-R Project
Tournament House
Paddington
London
W2 1HA

Alternative Reference: See Layout Tab 841 x 297 Sheet 1

Drawing Number: NTPO\SLD\2304\GSCS\001

Sheet: 1 of 6

Revision: C



Legend

Cabinet and Verts	Copper Joint	Trough Duct Cable Tray	Signal Box	FTN Core Node	Screen Joint Routeworks	Overbridge	Signal	Engineer's Line Reference	Crossing	GAS — GAS — Gas Line
Cabinet with Regenerator and Verts	Fibre Joint	Cable - Type Identified by FTN Code	Electrical Control Room	Core Node with GSM-R Colocated	Copper Joint Routeworks	Underbridge	VAP Access Point	Mile Post	Gantry	HV — HV — HV Cable
KEY	Screening Conductor Joint with/without Earth	Manhole	Mid Length Sheath Gap Fibre	FTN Access Node	Cabinet Routeworks	Tunnel	PAP Access Point	Platform	Water	AC Stanchion
Proposed Fibre & Civils Elements are shown in RED		All Existing Elements are shown in BLACK	Sheath Gap Copper	FTN Access Node with GSM-R Colocated	Fibre Joint Routeworks	Earth Farm	Buffer Stop	Telephone	Cable Pull	Copper Blue Fibre Red Screen Green

Notes

Rev	Date	Description of Revisions	Drawn	Chkd	Appr
C	31/01/13	As Built	RM	JH	IA
B	04.01.11	Amends as per NWR Design Review	DA	JW	CT
A	18.11.10	Redrafted from GSCS-WPDA As-built SLD.dwg	MB	JW	CT

Contractor(s)

Status: **As Built**

Scale(s): NTS, WPH1

Designed	Sign.	Date
Drawn	Sign.	Date 18.11.10
Checked	Sign.	Date 18.11.10
Approved	Sign.	Date 18.11.10
Project		
FTN / GSM-R Project Stage 2		
Drawing Title		
Worplesdon (2304) to Guildford SB (GSCS)		

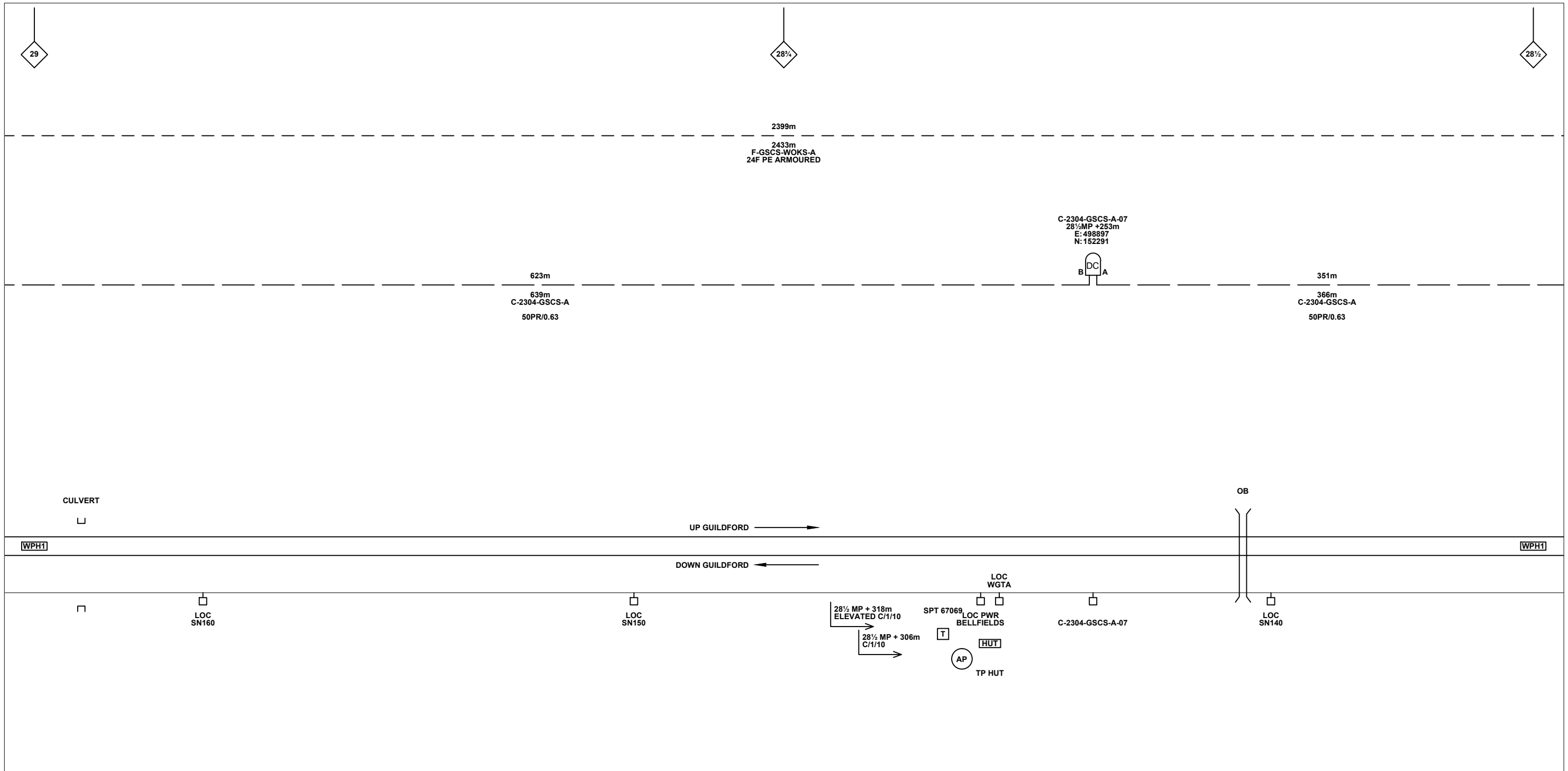
FTN/GSM-R Project
Tournament House
Paddington
London
W2 1HA

Alternative Reference: See Layout Tab 841 x 297 Sheet 1

Drawing Number: NTPO\SLD\2304\GSCS\001

Sheet: 2 of 6

Revision: C



Legend

Cabinet and Verts	Copper Joint	Trough Duct Cable Tray	Signal Box	FTN Core Node	Screen Joint Routeworks	Overbridge	Signal	Engineer's Line Reference	Crossing	GAS — GAS — Gas Line
Cabinet with Regenerator and Verts	Fibre Joint	Cable - Type Identified by FTN Code	Electrical Control Room	Core Node with GSM-R Colocated	Copper Joint Routeworks	Underbridge	Vehicle Access Point	Mile Post	Gantry	HV — HV — HV Cable
KEY	Screening Conductor Joint with/without Earth	Manhole	Mid Length Sheath Gap Fibre	FTN Access Node	Cabinet Routeworks	Manhole details: Cross-To be used Filled-In use Clear-Empty	Pedestrian Access Point	Platform	SEW — SEW — Sewer	LV — LV — LV Cable
Proposed Fibre & Civils Elements are shown in RED	2034m F-DIDC-RGAC-A	Sheath Gap Copper	FTN Access Node with GSM-R Colocated	Fibre Joint Routeworks	Tunnel	Earth Farm	Buffer Stop	Telephone	TEL — TEL — Telecoms	W — W — Water
Proposed Copper Elements are shown in BLUE	Existing Fibre Cable	Existing Copper Cable	Existing Screen Cable	Cable Pull	AC Stanchion					
Proposed Screening Elements are shown in MAGENTA										
All Recoveries are shown in GREEN										

Rev	Date	Description of Revisions	Drawn	Chkd	Appr
C	31/01/13	As Built	RM	JH	IA
B	04.01.11	Amends as per NWR Design Review	DA	JW	CT
A	18.11.10	Redrafted from GSCS-WPDA As-built SLD.dwg	MB	JW	CT

Contractor(s)

Status: **As Built**

Scale(s): NTS

ELR & Mileage: WPH1

Designed	Sign.	Date
Drawn	Mike Bonner	18.11.10
Checked	Joe Winter	18.11.10
Approved	Chris Tappenden	18.11.10
Project: FTN / GSM-R Project Stage 2		
Drawing Title: Worplesdon (2304) to Guildford SB (GSCS)		

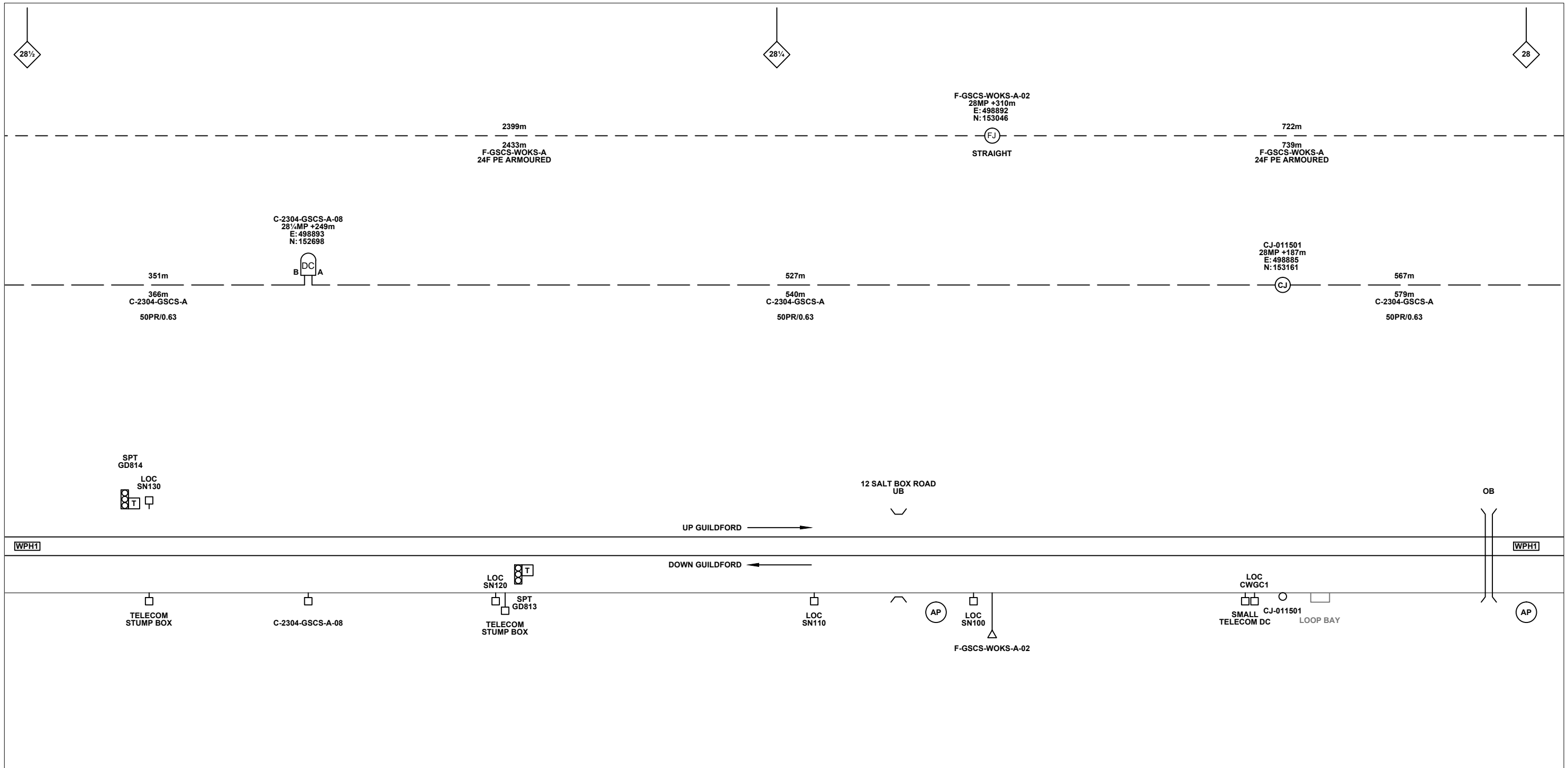
FTN/GSM-R Project
Tournament House
Paddington
London
W2 1HA

Alternative Reference: See Layout Tab 841 x 297 Sheet 2

Drawing Number: NTPO\SLD\2304\GSCS\001

Sheet: 4 of 6

Revision: C



Legend

Cabinet and Verts	Copper Joint	Trough Duct Cable Tray	Signal Box	FTN Core Node	Screen Joint Routeworks	Overbridge	Signal	Engineer's Line Reference	Crossing	GAS — GAS — Gas Line
Cabinet with Regenerator and Verts	Fibre Joint	Cable - Type Identified by FTN Code	Electrical Control Room	Core Node with GSM-R Colocated	Copper Joint Routeworks	Underbridge	Vehicle Access Point	Mile Post	Gantry	HV — HV — HV Cable
KEY	Screening Conductor Joint with/without Earth	Status - as per Key Below	Manhole	FTN Access Node	Cabinet Routeworks	Manhole details: Cross-To be used, Filled-In use, Clear-Empty	Pedestrian Access Point	Platform	SEW — SEW — Sewer	LV — LV — LV Cable
Proposed Fibre & Civils Elements are shown in RED		All Existing Elements are shown in BLACK	Mid Length Sheath Gap Fibre	FTN Access Node with GSM-R Colocated	Fibre Joint Routeworks	Tunnel	Earth Farm	Buffer Stop	Telephone	W — W — Water
Proposed Copper Elements are shown in BLUE		Existing Fibre Cable	Sheath Gap Copper							Cable Pull
Proposed Screening Elements are shown in MAGENTA		Existing Copper Cable								AC Stanchion
All Recoveries are shown in GREEN		Existing Screen Cable								

Notes

Rev	Date	Description of Revisions	Drawn	Chkd	Appr
C	31/01/13	As Built	RM	JH	IA
B	04.01.11	Amends as per NWR Design Review	DA	JW	CT
A	18.11.10	Redrafted from GSCS-WPDA As-built SLD.dwg	MB	JW	CT

Contractor(s)

Status: **As Built**

Scale(s): NTS

ELR & Mileage: WPH1

Designed	Sign.	Date
Drawn	Sign.	Date 18.11.10
Checked	Sign.	Date 18.11.10
Approved	Sign.	Date 18.11.10
Project: FTN / GSM-R Project Stage 2		
Drawing Title: Worplesdon (2304) to Guildford SB (GSCS)		

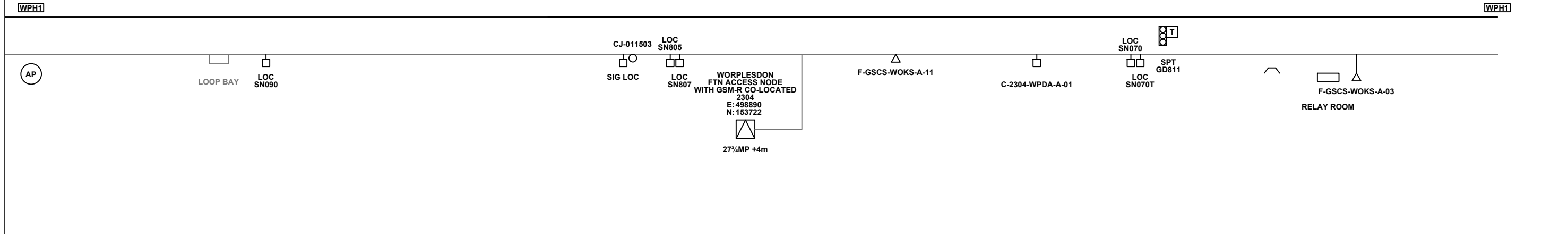
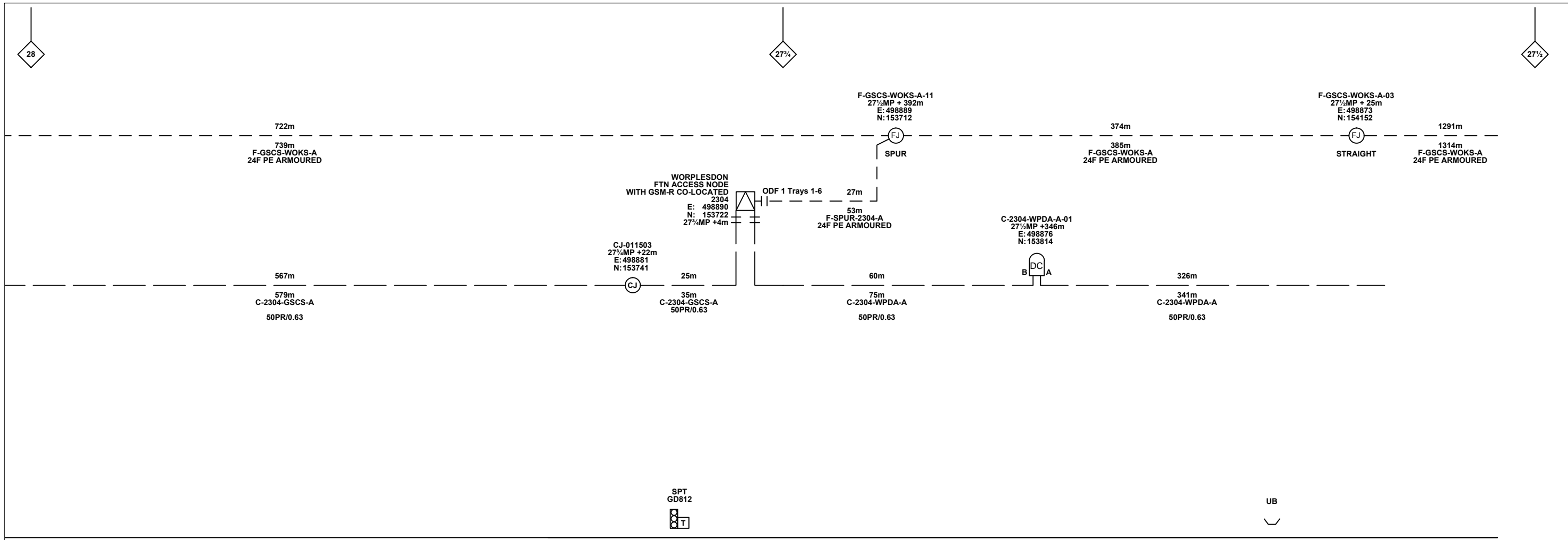
FTN/GSM-R Project
Tournament House
Paddington
London
W2 1HA

Alternative Reference: See Layout Tab 841 x 297 Sheet 3

Drawing Number: NTPO\SLD\2304\GSCS\001

Sheet: 5 of 6

Revision: C



Legend

Cabinet and Verts	Copper Joint	Trough Duct Cable Tray	Signal Box	FTN Core Node	Screen Joint Routeworks	Manhole details: Cross-To be used Filled-In use Clear-Empty	Overbridge	Signal	Engineer's Line Reference	Crossing	GAS — GAS — Gas Line
Cabinet with Regenerator and Verts	Fibre Joint	Cable - Type Identified by FTN Code	Electrical Control Room	Core Node with GSM-R Colocated	Copper Joint Routeworks	Manhole	Underbridge	Vehicle Access Point	Mile Post	Gantry	HV — HV — HV Cable
KEY	Screening Conductor Joint with/without Earth	Status - as per Key Below	Mid Length Sheath Gap Fibre	FTN Access Node	Cabinet Routeworks	Sheath Gap Fibre	Tunnel	Pedestrian Access Point	Platform	Water	Cable Pull
Proposed Fibre & Civils Elements are shown in RED		All Existing Elements are shown in BLACK	Mid Length Sheath Gap Copper	FTN Access Node with GSM-R Colocated	Fibre Joint Routeworks	Existing Fibre Cable	Earth Farm	Buffer Stop	Telephone	AC Stanchion	Copper Blue
Proposed Copper Elements are shown in BLUE		Existing Copper Cable	Existing Screen Cable			Existing Screen Cable					Fibre Red
Proposed Screening Elements are shown in MAGENTA											Screen Green
All Recoveries are shown in GREEN											

Notes

Rev	Date	Description of Revisions	Drawn	Chkd	Appr
C	31/01/13	As Built	RM	JH	IA
B	04.01.11	Amends as per NWR Design Review	DA	JW	CT
A	18.11.10	Redrafted from GSCS-WPDA As-built SLD.dwg	MB	JW	CT

Contractor(s)

Status: **As Built**

Scale(s): NTS

ELR & Mileage: WPH1

Designed	Sign.	Date
Drawn	Sign.	Date 18.11.10
Checked	Sign.	Date 18.11.10
Approved	Sign.	Date 18.11.10
Project: FTN / GSM-R Project Stage 2		
Drawing Title: Worplesdon (2304) to Guildford SB (GSCS)		

FTN/GSM-R Project
Tournament House
Paddington
London
W2 1HA

Alternative Reference: See Layout Tab 841 x 297 Sheet 3

Drawing Number: NTPO\SLD\2304\GSCS\001

Sheet: 6 of 6

Revision: C