

**Legend**

	Cabinet and Verts		Copper Joint		Trough Duct Cable Tray		Signal Box		FTN Core Node		Screen Joint Routeworks		Manhole		Overbridge		Signal		Engineer's Line Reference
	Cabinet with Regenerator and Verts		Fibre Joint		Copper Cable		Electrical Control Room		Core Node with GSM-R Colocated		Copper Joint Routeworks		Mid Length Sheath Gap Fibre		Underbridge		Vehicle Access Point		Mile Post
	523m Cable Description		Screening Conductor Joint with/without Earth		Fibre Cable		Manhole		FTN Access Node		Cabinet Routeworks		Sheath Gap Copper		Tunnel		Pedestrian Access Point		Platform
	2034m Cable Description		Screening Conductor		Cable Description		FTN Access Node with GSM-R Colocated		Fibre Joint Routeworks		Manhole details: Green-To be used Red-In use Clear-Empty		Overbridge		Gas Line		Signal		Engineer's Line Reference
	484m Cable Description		Screening Conductor		Cable Description		Manhole		Cabinet Routeworks		Trough Duct Cable Tray		Underbridge		HV Cable		Signal		Engineer's Line Reference
	150sq mm Cable Description		Screening Conductor		Cable Description		Manhole		Cabinet Routeworks		Trough Duct Cable Tray		Underbridge		LV Cable		Signal		Engineer's Line Reference
	1988m Cable Description		Screening Conductor		Cable Description		Manhole		Cabinet Routeworks		Trough Duct Cable Tray		Underbridge		Sewer		Signal		Engineer's Line Reference
	540m Cable Description		Screening Conductor		Cable Description		Manhole		Cabinet Routeworks		Trough Duct Cable Tray		Underbridge		Telecoms		Signal		Engineer's Line Reference
	30PR/0.63mm Cable Description		Screening Conductor		Cable Description		Manhole		Cabinet Routeworks		Trough Duct Cable Tray		Underbridge		Water		Signal		Engineer's Line Reference

**Notes**

Rev	Date	Description of Revisions	Drawn	Chkd	Appr	Status
B	17/06/2010	Drawing was previously NTPOSLD23132314001A. Redrawn for as built purposes.	MT	RP	AA	
C	16/08/2012	Stage 2. As Built	JAG	MG	JH	

**Contractor(s)**

As-built

ELR & Message  
WPH1

Designed	Michal Taraj	Sgn.	Date	17/06/2010
Drawn	Michal Taraj	Sgn.	Date	17/06/2010
Checked	Rashmi Patel	Sgn.	Date	17/06/2010
Approved	Ajaz Ahmed	Sgn.	Date	17/06/2010
Project	FTN / GSM-R Project			
Drawing Title	Liss Station (2313) Petersfield Signal Box (PTFS)			

**Network Rail**

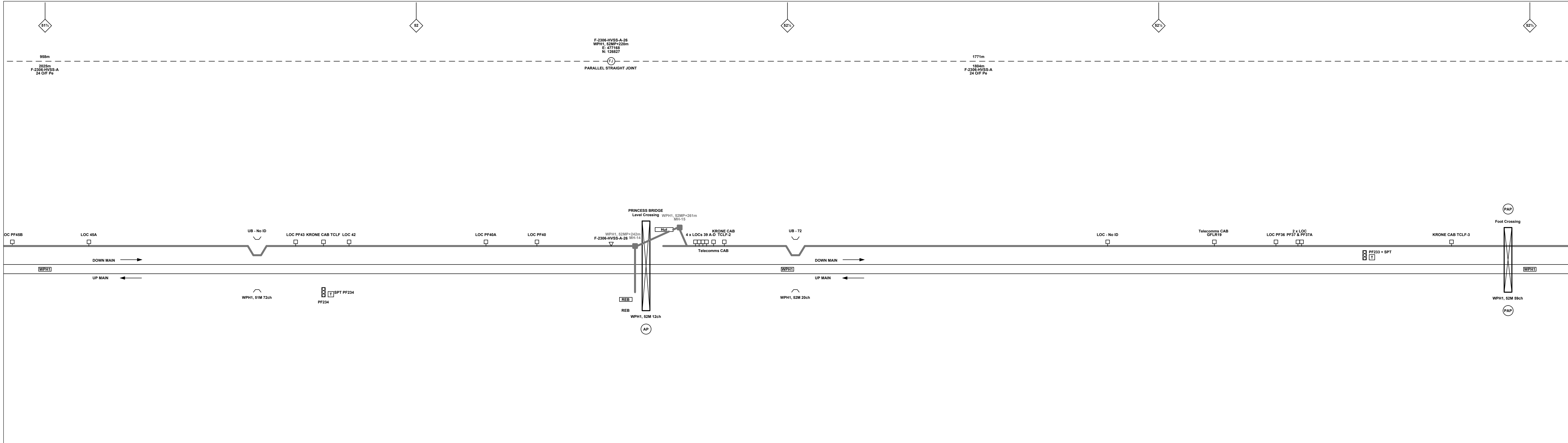
FTN/GSM-R Project  
Tournament House  
Petersfield  
London  
W2 1HA

Alternative Reference  
See Layout Tab A3 Sheets 1 and 2

Drawing Number  
NTPOSLD\2313\PTFS\001

Sheet  
1 of 5

Revision  
C



**Legend**

Cabinet and Verts	Copper Joint	Trough Duct Cable Tray	Signal Box	FTN Core Node	Screen Joint Routeworks
Cabinet with Regenerator and Verts	Fibre Joint	Copper Cable	Electrical Control Room	Core Node with GSM-R Colocated	Copper Joint Routeworks
523m Cable Description	Screening Conductor Joint with/without Earth	Fibre Cable	Manhole	FTN Access Node	Cabinet Routeworks
540m Cable Description	Screening Conductor	Cable Description	Mid Length Sheath Gap Fibre	FTN Access Node with GSM-R Colocated	Fibre Joint Routeworks
2034m Cable Description	Screening Conductor	Cable Description	Sheath Gap Copper	Manhole details: Green-To be used, Red-In use, Clear-Empty	Tunnel
218435-517828/314821-519242 Cable Description	Screening Conductor	Cable Description	Overbridge	Signal	Engineer's Line Reference
150sq mm 19/3.25mm Cable Description	Screening Conductor	Cable Description	Underbridge	Vehicle Access Point	Mile Post
Cable Description	Screening Conductor	Cable Description	Earth Form	Pedestrian Access Point	Platform
Cable Description	Screening Conductor	Cable Description	Buffer Stop	PAP	Telephone
Cable Description	Screening Conductor	Cable Description	Cable Pull	AC Stanchion	Crossing
Cable Description	Screening Conductor	Cable Description	Cable Pull	Gantry	Gantry

**Notes**

Rev	Date	Description of Revisions	Drawn	Chkd	Appr	Status
B	17/06/2010	Drawing was previously NTPOSLD23132314001A, Redrawn for as built purposes.	MT	RP	AA	
C	16/08/2012	Stage 2 As Built	JAG	MG	JH	

Contractor(s)

telecoms power transportation civils

**As-built**

ELR & Mileage  
WPH1

Designed	Michal Taraj	Sign.		Date	17/06/2010
Drawn	Michal Taraj	Sign.		Date	17/06/2010
Checked	Rashmi Patel	Sign.		Date	17/06/2010
Approved	Ajaz Ahmed	Sign.		Date	17/06/2010

Project: FTN / GSM-R Project

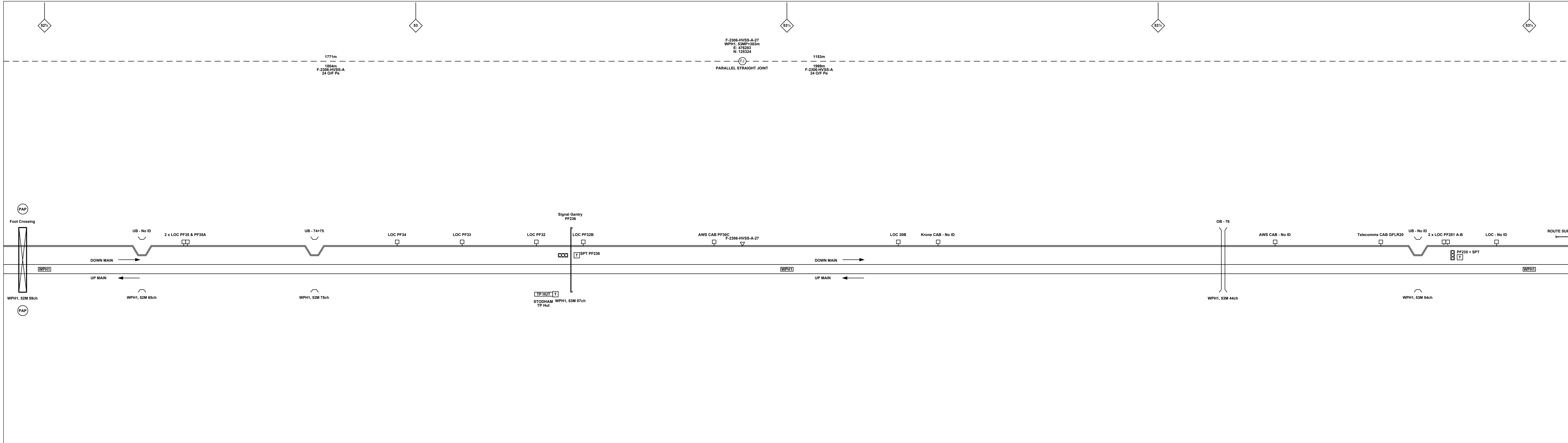
Drawing Title: Liss Station (2313) Petersfield Signal Box (PTFS)

FTN/GSM-R Project  
Tournament House  
Reading  
London  
W2 1HA

Alternative Reference: See Layout Tab A3 Sheets 3 and 4

Drawing Number: NTPO\SLD\2313\PTFS\001

Sheet: 2 of 5  
Revision: C



**Legend**

Cabinet and Verts	Copper Joint	Trough Duct Cable Tray	Signal Box	FTN Core Node	Screen Joint Routeworks	Manhole details: Green-To be used, Red-In use, Clear-Empty	Overbridge	Signal	Engineer's Line Reference
Cabinet with Regenerator and Verts	Fibre Joint	Copper Cable	Electrical Control Room	Core Node with GSM-R Colocated	Copper Joint Routeworks	Tunnel	Underbridge	Vehicle Access Point	Mile Post
523m Cable Description	Screening Conductor Joint with/without Earth	Fibre Cable	Manhole	FTN Access Node	Cabinet Routeworks	Earth Form	Platform	Pedestrian Access Point	Telephone
2034m Cable Description	Screening Conductor	Cable Description	Mid Length Sheath Gap Fibre	FTN Access Node with GSM-R Colocated	Fibre Joint Routeworks	Buffer Stop	Crossing	Gas Line	AC Stanchion
484m Cable Description	Cable Description	Screening Conductor	Sheath Gap Copper			Gantry	HV Cable	LV Cable	
218435-517828/314821-519242 Cable Description	Cable Description	Screening Conductor				Water	Sewer	Telecoms	

**Notes**

Rev	Date	Description of Revisions	Drawn	Chkd	Appr	Status
B	17/06/2010	Drawing was previously NTP0SLD23132314001A, Redrawn for as built purposes.	MT	RP	AA	
C	16/08/2012	Stage 2 As Built	JAG	MG	JH	

Contractor(s)

telecoms power transportation civils

**As-built**

ELR & Mileage  
WPH1

Designed	Michal Taraj	Sign.		Date	17/06/2010
Drawn	Michal Taraj	Sign.		Date	17/06/2010
Checked	Rashmi Patel	Sign.		Date	17/06/2010
Approved	Ajaz Ahmed	Sign.		Date	17/06/2010

Project: FTN / GSM-R Project

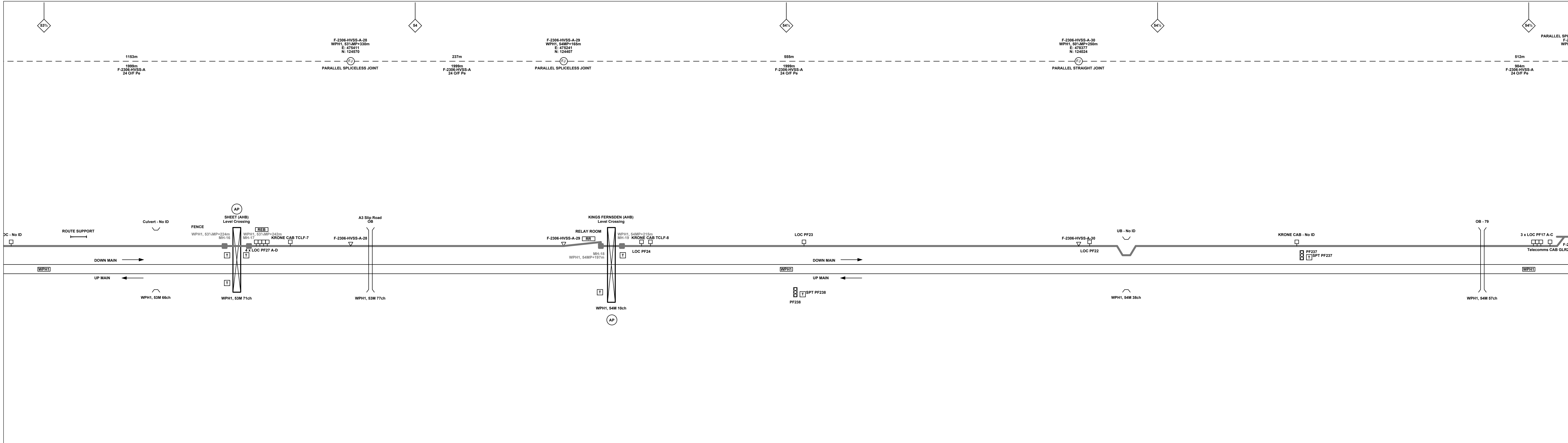
Drawing Title: Liss Station (2313) Petersfield Signal Box (PTFS)

FTN/GSM-R Project  
Tournament House  
Reading  
London  
W2 1HA

Alternative Reference: See Layout Tab A3 Sheets 5 and 6

Drawing Number: NTP0\SLD\2313\PTFS\001

Sheet: 3 of 5  
Revision: C



**Legend**

	Cabinet and Verts		Copper Joint		Trough Duct Cable Tray		Signal Box		FTN Core Node		Screen Joint Routeworks		Manhole details: Green-To be used Red-In use Clear-Empty
	Cabinet with Regenerator and Verts		Fibre Joint		Copper Cable		Electrical Control Room		Core Node with GSM-R Colocated		Copper Joint Routeworks		Tunnel
	523m Cable Description Copper		Screening Conductor Joint with/without Earth		Fibre Cable		Manhole		FTN Access Node		Cabinet Routeworks		Overbridge
	2034m Cable Description Fibre		Screening Conductor		Screening Conductor		Mid Length Sheath Gap Fibre		FTN Access Node with GSM-R Colocated		Fibre Joint Routeworks		Underbridge
	1988m Cable Description Copper		Screening Conductor		Screening Conductor		Sheath Gap Copper		Platform		Telephone		Earth Form
	484m Cable Description Fibre		Screening Conductor		Screening Conductor		Buffer Stop		Signal		Engineer's Line Reference		Crossing
	218435-517828/314821-519242 Cable Description Fibre		Screening Conductor		Screening Conductor		Gantry		Vehicle Access Point		Mile Post		GAS
	150sq mm Cable Description Fibre		Screening Conductor		Screening Conductor		Sewer		Pedestrian Access Point		AC Stanchion		HV Cable
	19/3.25mm Cable Description Fibre		Screening Conductor		Screening Conductor		Telecoms		Water				LV Cable

**Notes**

Rev	Date	Description of Revisions	Drawn	Chkd	Appr	Status
B	17/06/2010	Drawing was previously NTPOSLD23132314001A, Redrawn for as built purposes.	MT	RP	AA	
C	16/08/2012	Stage 2 As Built	JAG	MG	JH	

Contractor(s)

telecoms power transportation civils

**As-built**

ELR & Mileage  
WPH1

Designed	Michal Taraj	Sign.	Date	17/06/2010
Drawn	Michal Taraj	Sign.	Date	17/06/2010
Checked	Rashmi Patel	Sign.	Date	17/06/2010
Approved	Ajaz Ahmed	Sign.	Date	17/06/2010
Project	FTN / GSM-R Project			
Drawing Title	Liss Station (2313) Petersfield Signal Box (PTFS)			

FTN/GSM-R Project  
Tournament House  
Reading  
London  
W2 1HA

Alternative Reference: See Layout Tab A3 Sheets 7 and 8

Drawing Number: NTPOS\SLD\2313\PTFS\001

Sheet: 4 of 5  
Revision: C



**Legend**

Cabinet and Verts	Copper Joint	Trough Duct Cable Tray	Signal Box	FTN Core Node	Screen Joint Routeworks
Cabinet with Regenerator and Verts	Fibre Joint	Copper Cable	Electrical Control Room	Core Node with GSM-R Colocated	Copper Joint Routeworks
523m Cable Description	Screening Conductor Joint with/without Earth	Fibre Cable	Manhole	FTN Access Node	Cabinet Routeworks
2034m Cable Description	Screening Conductor	484m Cable Description	Mid Length Sheath Gap Fibre	FTN Access Node with GSM-R Colocated	Fibre Joint Routeworks
30PR/0.65mm Cable Description	1988m Cable Description	150sq mm Cable Description	Sheath Gap Copper		

Manhole details: Green - To be used, Red - In use, Clear - Empty

Tunnel

Overbridge, Underbridge, Earth Farm, Buffer Stop, Telephone, Signal, Vehicle Access Point, Pedestrian Access Point, Mile Post, Platform, Engineer's Line Reference, Crossing, Gantry, Cable Pull, AC Stanchion

Gas Line, HV Cable, LV Cable, Sewer, Telecoms, Water

**Notes**

Rev	Date	Description of Revisions	Drawn	Chkd	Appr	Status
B	17/06/2010	Drawing was previously NTPOSLD23132314001A. Redrawn for as built purposes.	MT	RP	AA	
C	16/06/2012	Stage 2. As Built	JAG	MG	JH	

Contractor(s)

NTS

As-built

ELR & Message

WPH1

Designed	Michal Taraj	Slgn.		Date	17/06/2010
Drawn	Michal Taraj	Slgn.		Date	17/06/2010
Checked	Rashmi Patel	Slgn.		Date	17/06/2010
Approved	Ajaz Ahmed	Slgn.		Date	17/06/2010

Project: FTN / GSM-R Project

Drawing Title: Liss Station (2313) Petersfield Signal Box (PTFS)

FTN/GSM-R Project  
Tournament House  
Paddington  
London  
W2 1HA

Alternative Reference: See Layout Tab A3 Sheet 9

Drawing Number: NTPOSLD\2313\PTFS\001

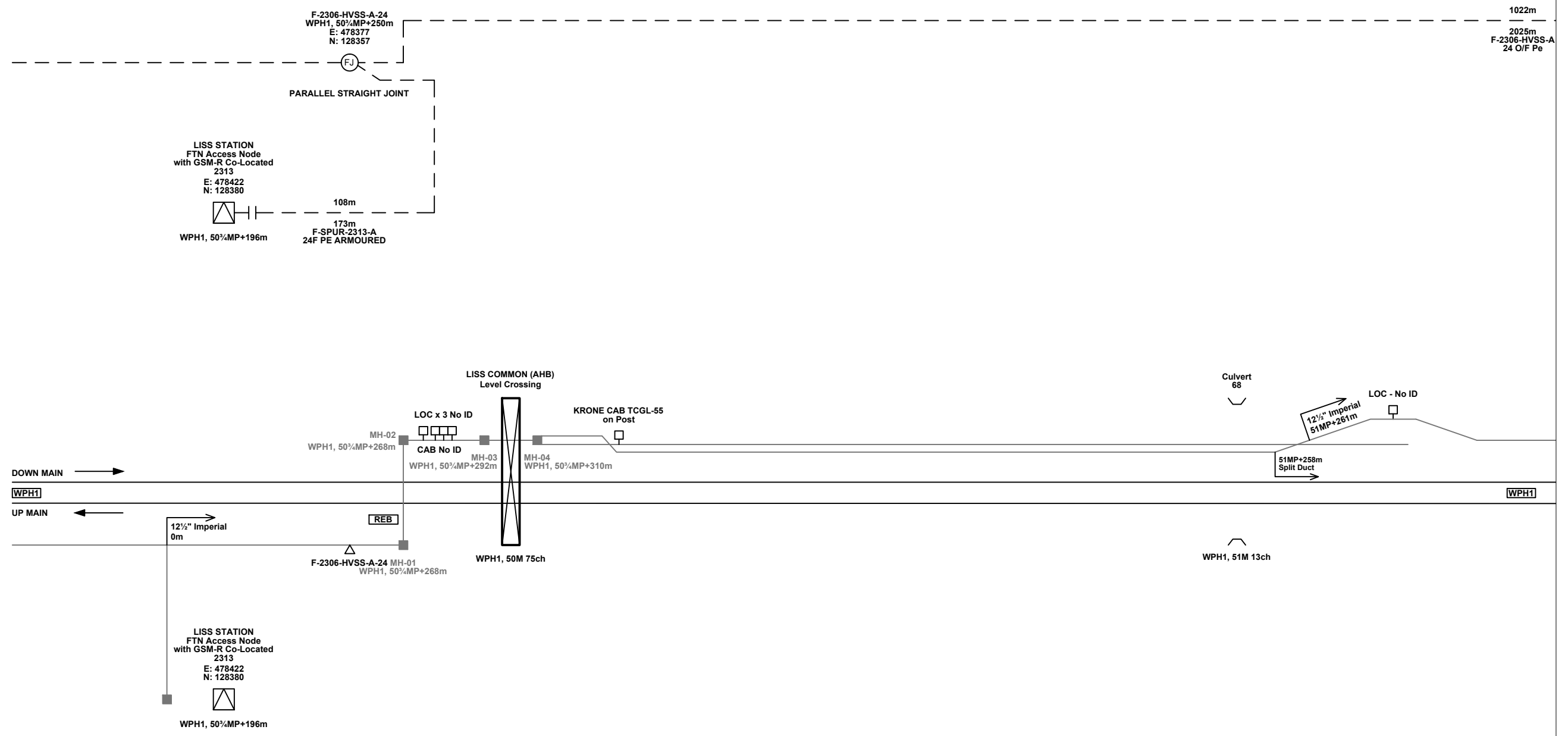
Sheet: 5 of 5

Revision: C

51

51 1/4

(NOT FOUND)



**Legend**

Cabinet and Verts	Copper Joint	Trough Duct Cable Tray	Signal Box	FTN Core Node	Screen Joint Routeworks	Overbridge	Signal	Engineer's Line Reference	Crossing	Gas Line
Cabinet with Regenerator and Verts	Fibre Joint	Copper Cable	Electrical Control Room	Core Node with GSM-R Colocated	Copper Joint Routeworks	Underbridge	Vehicle Access Point	Mile Post	Gantry	HV Cable
523m Cable Description Copper	Screening Conductor Joint with/without Earth	Fibre Cable	Manhole	FTN Access Node	Cabinet Routeworks	Tunnel	Pedestrian Access Point	Platform	Sewer	LV Cable
1988m Cable Description Fibre	484m Cable Description Screening Conductor	492m Cable Description Screening Conductor	Mid Length Sheath Gap Fibre	FTN Access Node with GSM-R Colocated	Fibre Joint Routeworks	Earth Farm	Buffer Stop	Telephone	Water	Cable Pull
540m C-DIDC-RGAC-A 30PR/0.63mm	2034m F-DIDC-RGAC-A 24 Optic Fibre	218435-517828/314821-519242 150sq mm 19/3.25mm	Sheath Gap Copper		Manhole details: Green-To be used, Red-In use, Clear-Empty	AC Stanchion				

Notes

Rev	Date	Description of Revisions	Drawn	Chkd	Appr
B	17/06/2010	Drawing was previously NTPOSLD23132314001A, Redrawn for as built purposes.	MT	RP	AA
C	16/08/2012	Stage 2 As Built	JAG	MG	JH

Contractor(s)

Status: **As-built**

Scale(s): NTS

ELR & Mileage: WPH1

Designed	Michal Taraj	Sign.	Date	17/06/2010
Drawn	Michal Taraj	Sign.	Date	17/06/2010
Checked	Rashmi Patel	Sign.	Date	17/06/2010
Approved	Ajaz Ahmed	Sign.	Date	17/06/2010
Project	<b>FTN / GSM-R Project</b>			
Drawing Title	<b>Liss Station (2313) Petersfield Signal Box (PTFS)</b>			

FTN/GSM-R Project  
Tournament House  
Paddington  
London  
W2 1HA

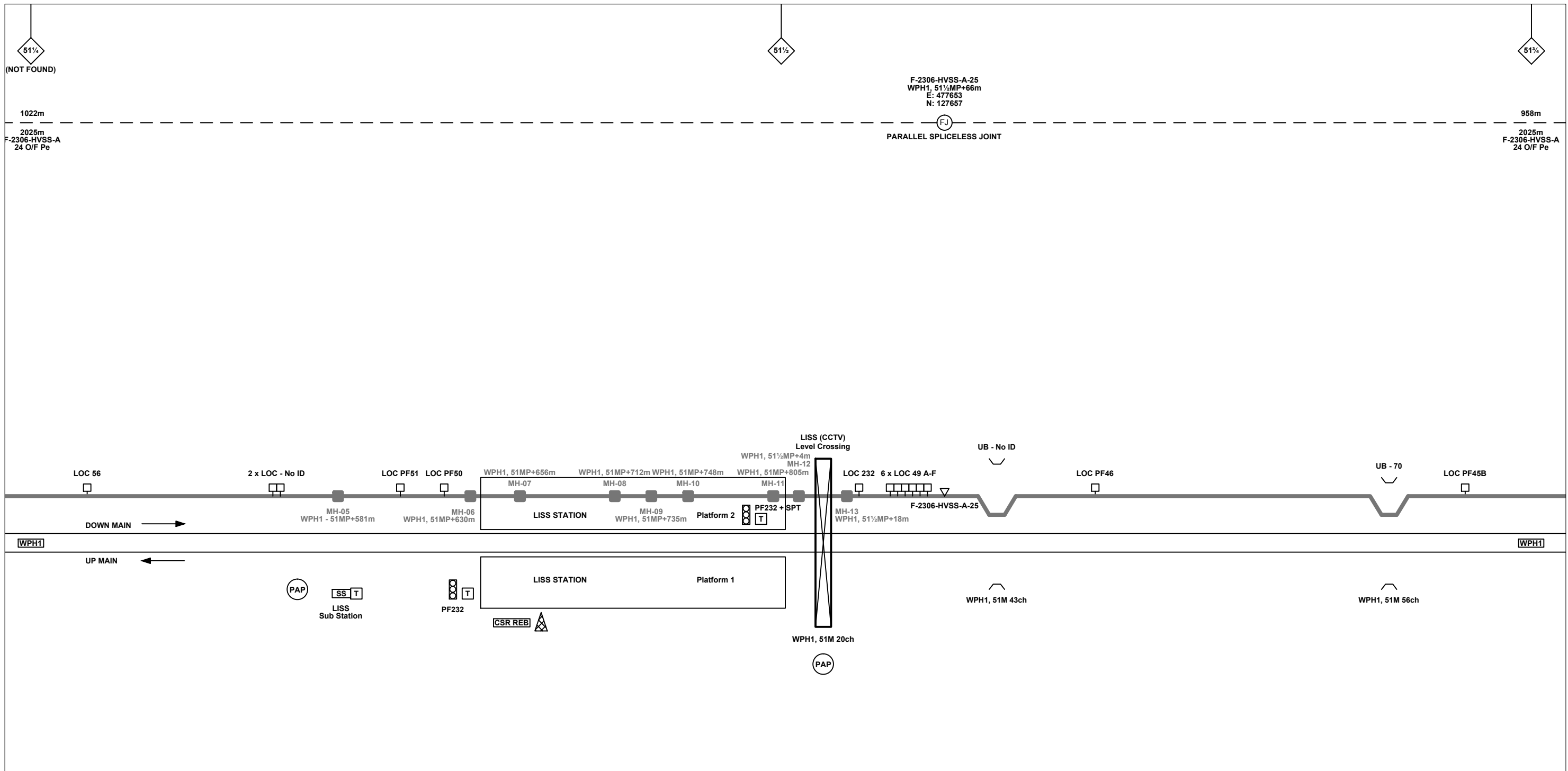
Alternative Reference: See Layout Tab 841 x 297 Sheet 1

Drawing Number: NTPO\SLD\2313\PTFS\001

Sheet: 1 of 9

Revision: C





**Legend**

Cabinet and Verts	Copper Joint	Trough Duct Cable Tray	Signal Box	FTN Core Node	Screen Joint Routeworks	Overbridge	Signal	Engineer's Line Reference	Crossing	GAS — GAS — Gas Line
Cabinet with Regenerator and Verts	Fibre Joint	Copper Cable	Electrical Control Room	Core Node with GSM-R Colocated	Copper Joint Routeworks	Underbridge	Vehicle Access Point	Mile Post	Gantry	HV — HV — HV Cable
523m Cable Description Copper	Screening Conductor Joint with/without Earth	Fibre Cable	Manhole	FTN Access Node	Cabinet Routeworks	Tunnel	Pedestrian Access Point	Platform	SEW — SEW — Sewer	LV — LV — LV Cable
540m C-DIDC-RGAC-A 30PR/0.63mm	1988m Cable Description Fibre	Screening Conductor	Mid Length Sheath Gap Fibre	FTN Access Node with GSM-R Colocated	Fibre Joint Routeworks	Manhole details: Green-To be used, Red-In use, Clear-Empty	Earth Farm	Telephone	TEL — TEL — Telecoms	W — W — Water
2034m F-DIDC-RGAC-A 24 Optic Fibre	484m Cable Description Screening Conductor	Sheath Gap Copper	FTN Core Node	FTN Core Node	Tunnel	Buffer Stop	Cable Pull	AC Stanchion		

Notes

Rev	Date	Description of Revisions	Drawn	Chkd	Appr
B	17/06/2010	Drawing was previously NTPOSLD23132314001A, Redrawn for as built purposes.	MT	RP	AA
C	16/08/2012	Stage 2 As Built	JAG	MG	JH

Contractor(s)

telecoms power transportation civils

Status: **As-built**

Scale(s): NTS

ELR & Mileage: WPH1

Designed	Michal Taraj	Sign.	Date	17/06/2010
Drawn	Michal Taraj	Sign.	Date	17/06/2010
Checked	Rashmi Patel	Sign.	Date	17/06/2010
Approved	Ajaz Ahmed	Sign.	Date	17/06/2010
Project	FTN / GSM-R Project			
Drawing Title	Liss Station (2313) Petersfield Signal Box (PTFS)			

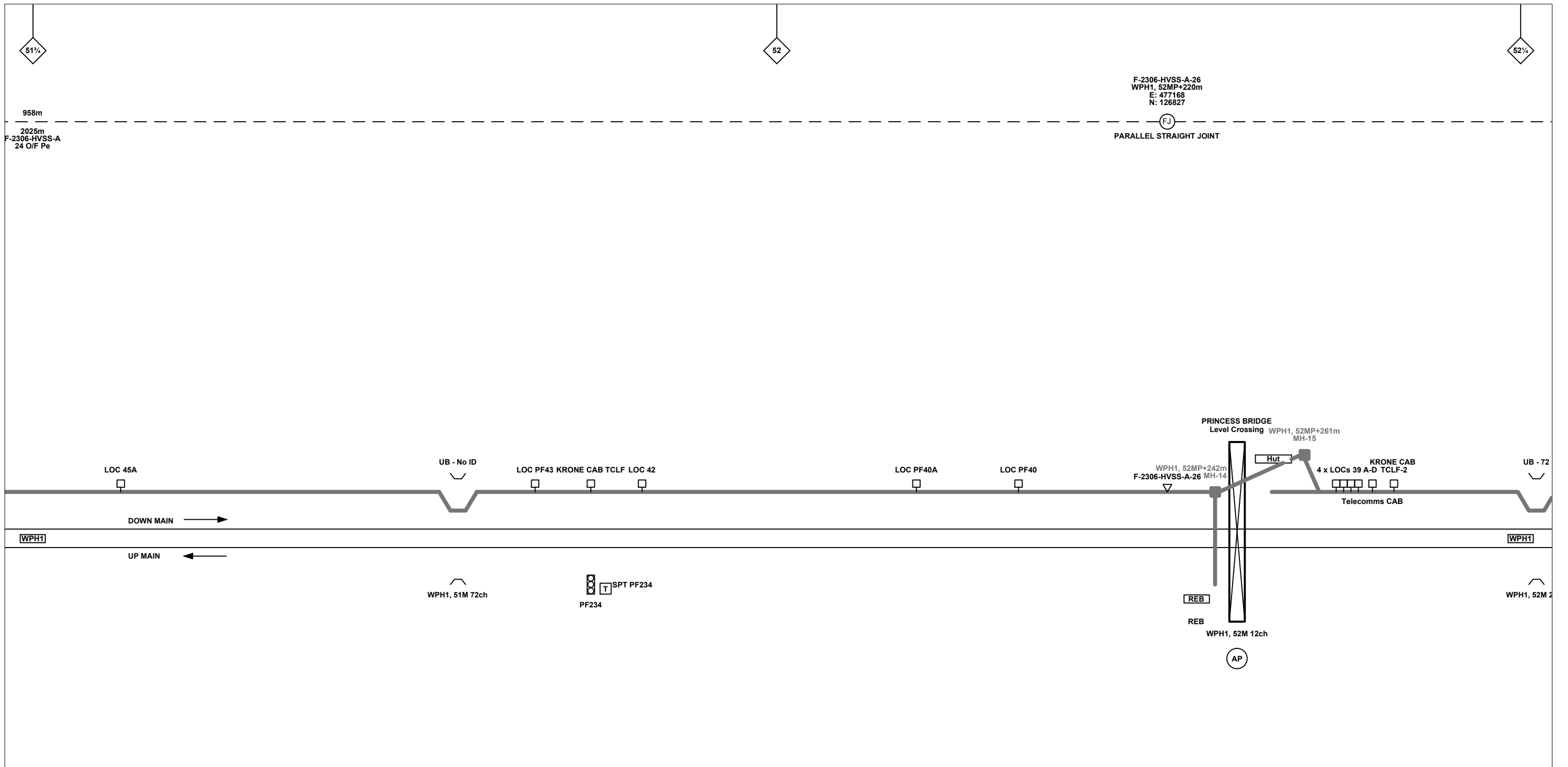
FTN/GSM-R Project  
Tournament House  
Paddington  
London  
W2 1HA

Alternative Reference: See Layout Tab 841 x 297 Sheet 1

Drawing Number: NTPO\SLD\2313\PTFS\001

Sheet: 2 of 9

Revision: C



**Legend**

Cabinet and Verts	Copper Joint	Trough Duct Cable Tray	Signal Box	FTN Core Node	Screen Joint Routeworks	Overbridge	Signal	Engineer's Line Reference	Crossing	Gas Line
Cabinet with Regenerator and Verts	Fibre Joint	Copper Cable	Electrical Control Room	Core Node with GSM-R Colocated	Copper Joint Routeworks	Underbridge	Vehicle Access Point	Mile Post	Gantry	HV Cable
523m Cable Description Copper	Screening Conductor Joint with/without Earth	Fibre Cable	Manhole	FTN Access Node	Cabinet Routeworks	Manhole details: Green-To be used, Red-In use, Clear-Empty	Pedestrian Access Point	Platform	Sewer	LV Cable
540m C-DIDC-RGAC-A 30PR/0.63mm	1988m Cable Description Fibre	Screening Conductor	Mid Length Sheath Gap Fibre	FTN Access Node with GSM-R Colocated	Fibre Joint Routeworks	Tunnel	Earth Farm	Buffer Stop	Telephone	Water
2034m F-DIDC-RGAC-A 24 Optic Fibre	484m Cable Description Fibre	Screening Conductor	Sheath Gap Copper						Cable Pull	AC Stanchion
218435-517828/314821-519242 150sq mm 19/3.25mm										

Notes

Rev	Date	Description of Revisions	Drawn	Chkd	Appr
B	17/06/2010	Drawing was previously NTPOSLD23132314001A, Redrawn for as built purposes.	MT	RP	AA
C	16/08/2012	Stage 2 As Built	JAG	MG	JH

Contractor(s)

telecoms power transportation civils

Status: **As-built**

Scale(s): NTS

ELR & Mileage: WPH1

Designed	Michal Taraj	Sign.	Date	17/06/2010
Drawn	Michal Taraj	Sign.	Date	17/06/2010
Checked	Rashmi Patel	Sign.	Date	17/06/2010
Approved	Ajaz Ahmed	Sign.	Date	17/06/2010
Project	FTN / GSM-R Project			
Drawing Title	Liss Station (2313) Petersfield Signal Box (PTFS)			

FTN/GSM-R Project  
Tournament House  
Paddington  
London  
W2 1HA

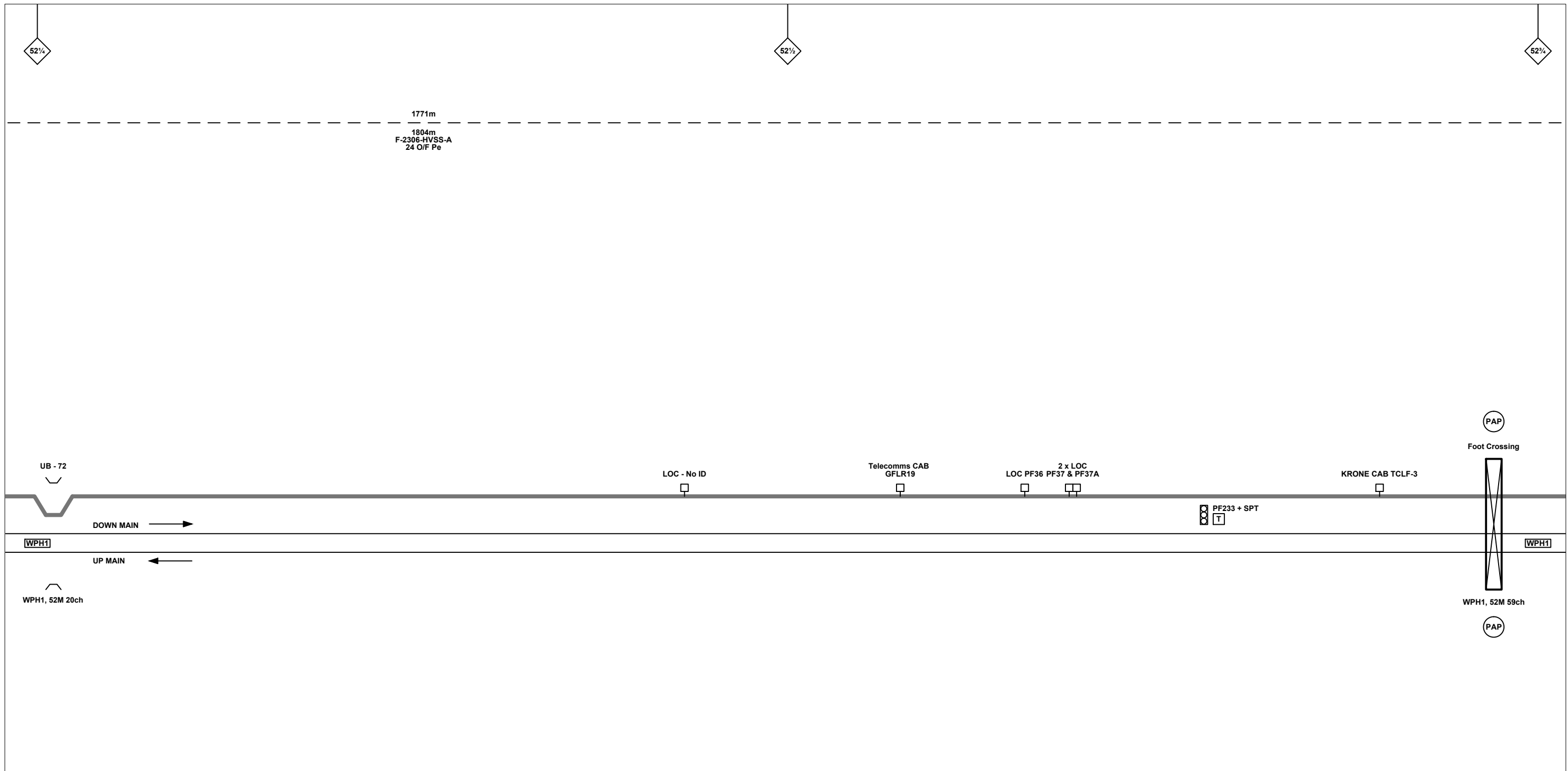
Alternative Reference: See Layout Tab 841 x 297 Sheet 2

Drawing Number: NTPO\SLD\2313\PTFS\001

Sheet: 3 of 9

Revision: C





**Legend**

Cabinet and Verts	Copper Joint	Trough Duct Cable Tray	Signal Box	FTN Core Node	Screen Joint Routeworks	Overbridge	Signal	Engineer's Line Reference	Crossing	Gas Line
Cabinet with Regenerator and Verts	Fibre Joint	Copper Cable	Electrical Control Room	Core Node with GSM-R Colocated	Copper Joint Routeworks	Underbridge	Vehicle Access Point	Mile Post	Gantry	HV Cable
523m Cable Description Copper	Screening Conductor Joint with/without Earth	Fibre Cable	Manhole	FTN Access Node	Cabinet Routeworks	Tunnel	Pedestrian Access Point	Platform	Sewer	LV Cable
540m C-DIDC-RGAC-A 30PR/0.63mm	1988m Cable Description Fibre	492m Cable Description Screening Conductor	Mid Length Sheath Gap Fibre	FTN Access Node with GSM-R Colocated	Fibre Joint Routeworks	Earth Farm	Buffer Stop	Telephone	Water	Cable Pull
2034m F-DIDC-RGAC-A 24 Optic Fibre	218435-517828/314821-519242 150sq mm 19/3.25mm	Sheath Gap Copper	Manhole details: Green-To be used, Red-In use, Clear-Empty							AC Stanchion

Rev	Date	Description of Revisions	Drawn	Chkd	Appr
B	17/06/2010	Drawing was previously NTPOSLD23132314001A, Redrawn for as built purposes.	MT	RP	AA
C	16/08/2012	Stage 2 As Built	JAG	MG	JH

Contractor(s)

telecoms power transportation civils

Status: **As-built**

Scale(s): NTS

ELR & Mileage: WPH1

Designed	Michal Taraj	Sign.	Date	17/06/2010
Drawn	Michal Taraj	Sign.	Date	17/06/2010
Checked	Rashmi Patel	Sign.	Date	17/06/2010
Approved	Ajaz Ahmed	Sign.	Date	17/06/2010
Project	FTN / GSM-R Project			
Drawing Title	Liss Station (2313) Petersfield Signal Box (PTFS)			

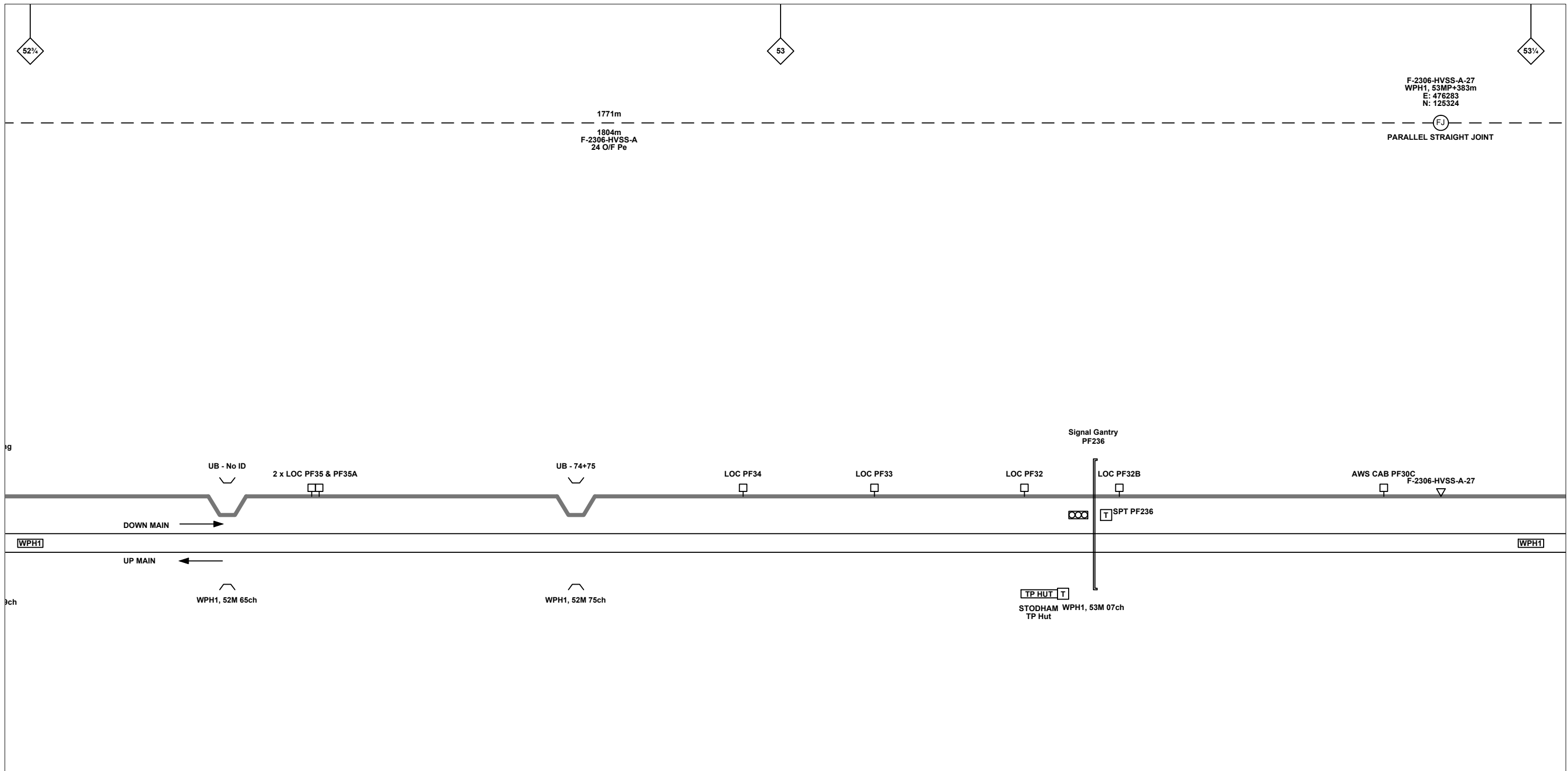
FTN/GSM-R Project  
Tournament House  
Paddington  
London  
W2 1HA

Alternative Reference: See Layout Tab 841 x 297 Sheet 2

Drawing Number: NTPO\SLD\2313\PTFS\001

Sheet: 4 of 9

Revision: C



**Legend**

Cabinet and Verts	Copper Joint	Trough Duct Cable Tray	Signal Box	FTN Core Node	Screen Joint Routeworks	Overbridge	Signal	Engineer's Line Reference	Crossing	Gas Line
Cabinet with Regenerator and Verts	Fibre Joint	Copper Cable	Electrical Control Room	Core Node with GSM-R Colocated	Copper Joint Routeworks	Underbridge	Vehicle Access Point	Mile Post	Gantry	HV Cable
523m Cable Description Copper	Screening Conductor Joint with/without Earth	Fibre Cable	Manhole	FTN Access Node	Cabinet Routeworks	Tunnel	Pedestrian Access Point	Platform	Cable Pull	LV Cable
540m C-DIDC-RGAC-A 30PR/0.63mm	1988m Cable Description Fibre	484m Cable Description Screening Conductor	Mid Length Sheath Gap Fibre	FTN Access Node with GSM-R Colocated	Fibre Joint Routeworks	Earth Farm	Buffer Stop	Telephone	AC Stanchion	Sewer
2034m F-DIDC-RGAC-A 24 Optic Fibre	492m Cable Description Screening Conductor	218435-517828/314821-519242 150sq mm 19/3.25mm	Sheath Gap Copper							Water

Manhole details:  
 Green - To be used  
 Red - In use  
 Clear - Empty

Notes

Rev	Date	Description of Revisions	Drawn	Chkd	Appr
B	17/06/2010	Drawing was previously NTPOSLD23132314001A, Redrawn for as built purposes.	MT	RP	AA
C	16/08/2012	Stage 2 As Built	JAG	MG	JH

Contractor(s)

telecoms power transportation civils

Status: **As-built**

Scale(s): NTS

ELR & Mileage: WPH1

Designed	Michal Taraj	Sign.	Date	17/06/2010
Drawn	Michal Taraj	Sign.	Date	17/06/2010
Checked	Rashmi Patel	Sign.	Date	17/06/2010
Approved	Ajaz Ahmed	Sign.	Date	17/06/2010
Project	FTN / GSM-R Project			
Drawing Title	Liss Station (2313) Petersfield Signal Box (PTFS)			

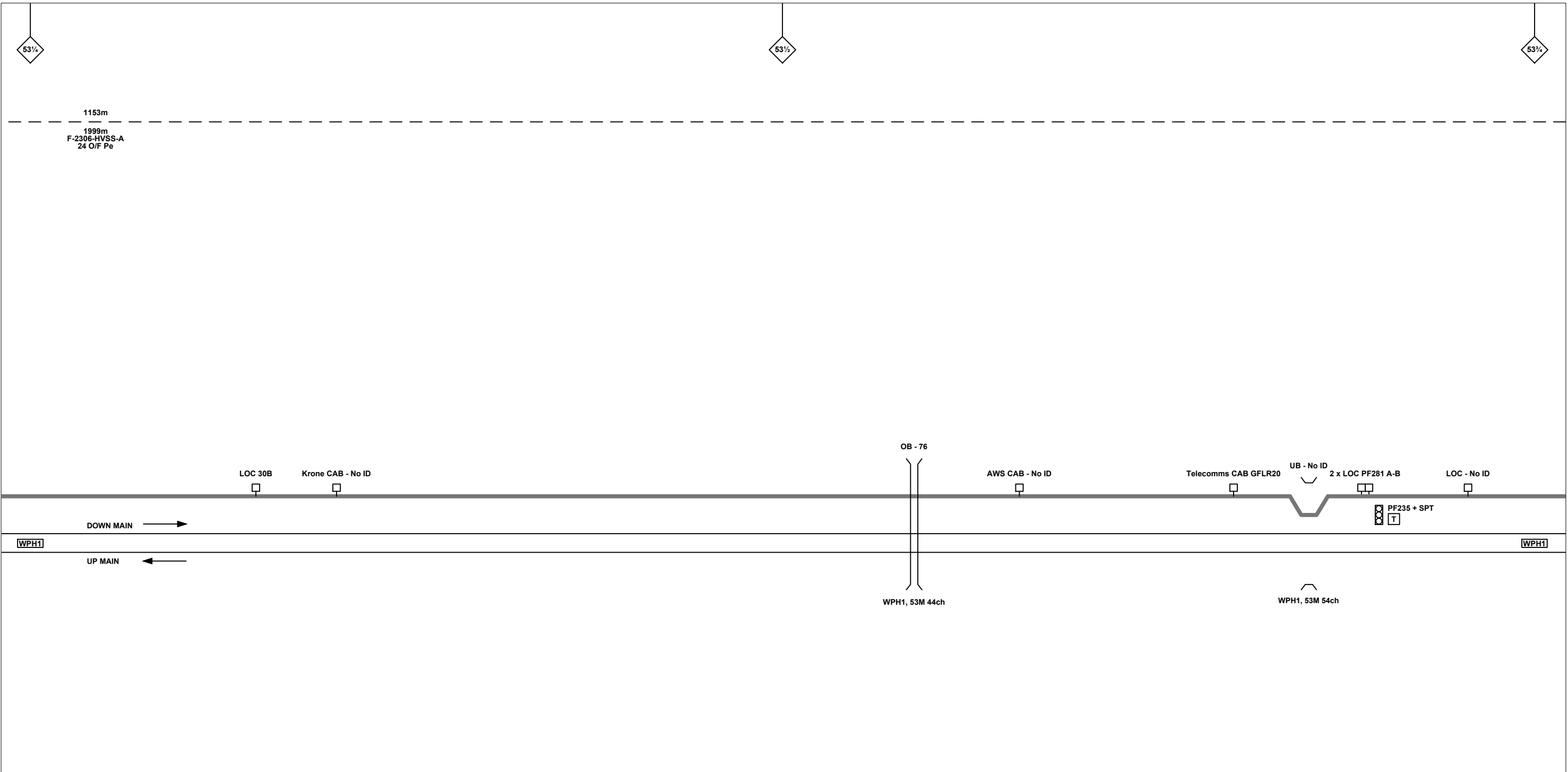
FTN/GSM-R Project  
Tournament House  
Paddington  
London  
W2 1HA

Alternative Reference: See Layout Tab 841 x 297 Sheet 3

Drawing Number: NTPO\SLD\2313\PTFS\001

Sheet: 5 of 9

Revision: C



**Legend**

Cabinet and Verts	Copper Joint	Trough Duct Cable Tray	Signal Box	FTN Core Node	Screen Joint Routeworks	Overbridge	Signal	Engineer's Line Reference	Crossing	Gas Line
Cabinet with Regenerator and Verts	Fibre Joint	Copper Cable	Electrical Control Room	Core Node with GSM-R Colocated	Copper Joint Routeworks	Underbridge	Vehicle Access Point	Mile Post	Gantry	HV Cable
523m Cable Description Copper	Screening Conductor Joint with/without Earth	Fibre Cable	Manhole	FTN Access Node	Cabinet Routeworks	Tunnel	Pedestrian Access Point	Platform	Sewer	LV Cable
2034m Cable Description Fibre	492m Cable Description Screening Conductor	218435-517828/314821-519242 150sq mm 19/3.25mm	Mid Length Sheath Gap Fibre	FTN Access Node with GSM-R Colocated	Fibre Joint Routeworks	Earth Farm	Buffer Stop	Telephone	Water	AC Stanchion
540m C-DIDC-RGAC-A 30PR/0.63mm	1988m Cable Description Fibre		Sheath Gap Copper		Manhole details: Green-To be used, Red-In use, Clear-Empty					

Notes

Rev	Date	Description of Revisions	Drawn	Chkd	Appr
B	17/06/2010	Drawing was previously NTPOSLD23132314001A, Redrawn for as built purposes.	MT	RP	AA
C	16/08/2012	Stage 2 As Built	JAG	MG	JH

Contractor(s)

telecoms power transportation civils

Status: **As-built**

Scale(s): NTS

ELR & Mileage: WPH1

Designed	Michal Taraj	Sign.	Date	17/06/2010
Drawn	Michal Taraj	Sign.	Date	17/06/2010
Checked	Rashmi Patel	Sign.	Date	17/06/2010
Approved	Ajaz Ahmed	Sign.	Date	17/06/2010
Project	FTN / GSM-R Project			
Drawing Title	Liss Station (2313) Petersfield Signal Box (PTFS)			

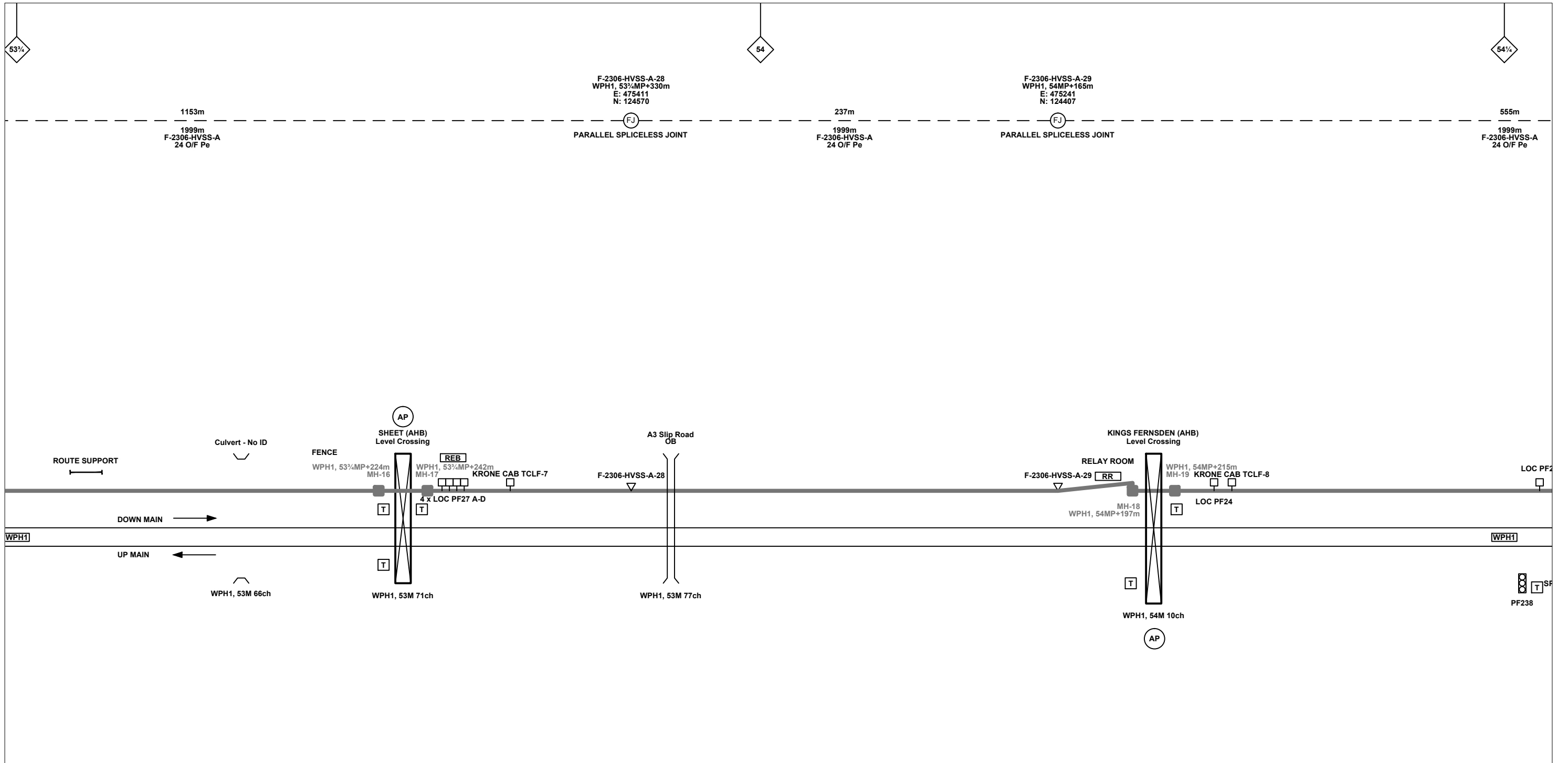
FTN/GSM-R Project  
Tournament House  
Paddington  
London  
W2 1HA

Alternative Reference: See Layout Tab 841 x 297 Sheet 3

Drawing Number: NTPO\SLD\2313\PTFS\001

Sheet: 6 of 9

Revision: C



**Legend**

Cabinet and Verts	Copper Joint	Trough Duct Cable Tray	Signal Box	FTN Core Node	Screen Joint Routeworks	Overbridge	Signal	Engineer's Line Reference	Crossing	Gas Line
Cabinet with Regenerator and Verts	Fibre Joint	Copper Cable	Electrical Control Room	Core Node with GSM-R Colocated	Copper Joint Routeworks	Underbridge	Vehicle Access Point	Mile Post	Gantry	HV Cable
523m Cable Description Copper	Screening Conductor Joint with/without Earth	Fibre Cable	Manhole	FTN Access Node	Cabinet Routeworks	Tunnel	Pedestrian Access Point	Platform	Telephone	LV Cable
2034m Cable Description Fibre	484m Cable Description Screening Conductor	Sheath Gap Copper	Mid Length Sheath Gap Fibre	FTN Access Node with GSM-R Colocated	Fibre Joint Routeworks	Earth Farm	Buffer Stop	Cable Pull	AC Stanchion	Sewer
540m Cable Description Copper	218435-517828/314821-519242 Cable Description Fibre	492m Cable Description Screening Conductor	Manhole details: Green-To be used, Red-In use, Clear-Empty							Water

Notes

Rev	Date	Description of Revisions	Drawn	Chkd	Appr
B	17/06/2010	Drawing was previously NTPOSLD23132314001A, Redrawn for as built purposes.	MT	RP	AA
C	16/08/2012	Stage 2 As Built	JAG	MG	JH

Contractor(s)

telecoms power transportation civils

Status: **As-built**

Scale(s): NTS

ELR & Mileage: WPH1

Designed	Michal Taraj	Sign.	Date	17/06/2010
Drawn	Michal Taraj	Sign.	Date	17/06/2010
Checked	Rashmi Patel	Sign.	Date	17/06/2010
Approved	Ajaz Ahmed	Sign.	Date	17/06/2010
Project	FTN / GSM-R Project			
Drawing Title	Liss Station (2313) Petersfield Signal Box (PTFS)			

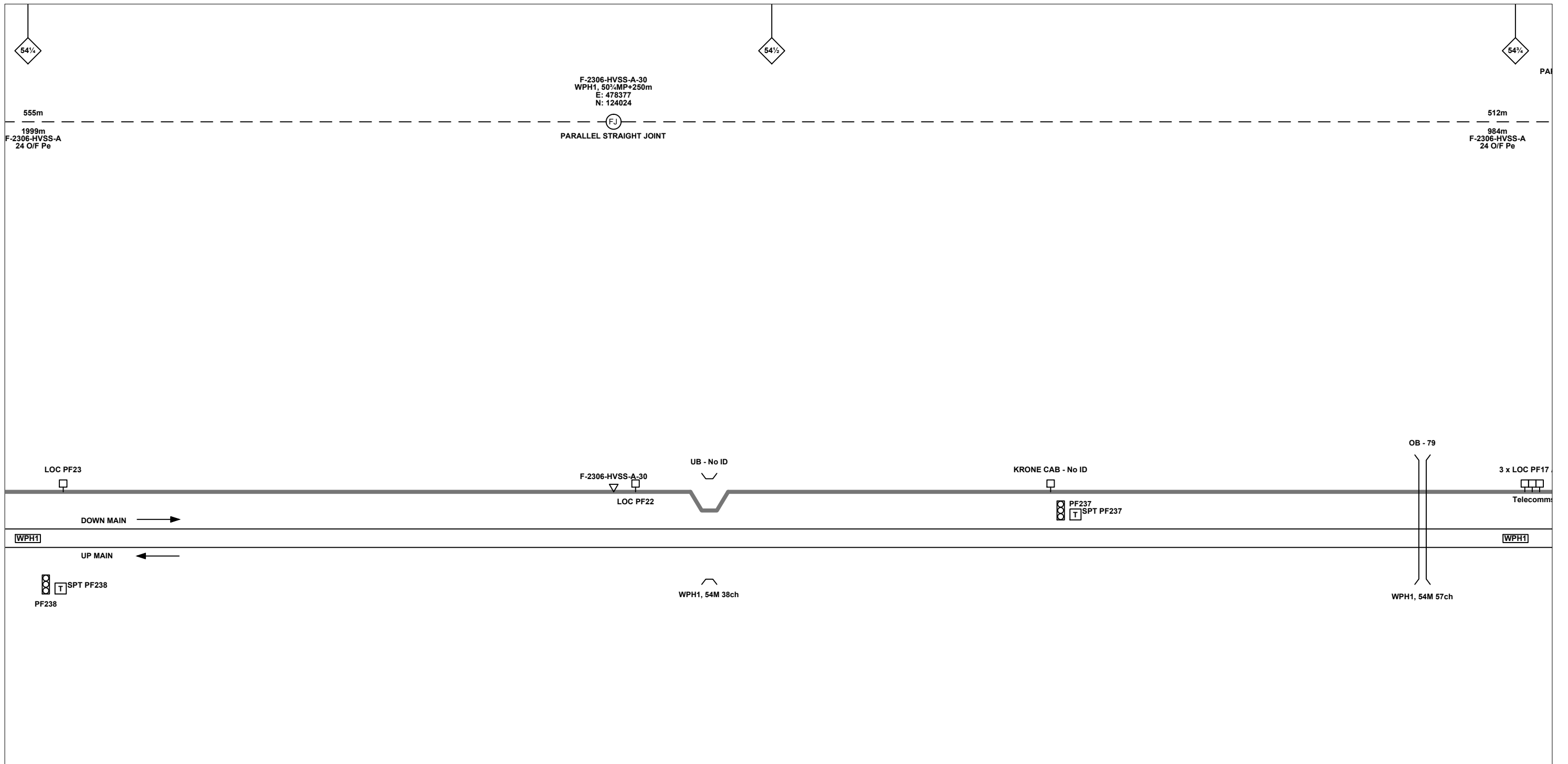
FTN/GSM-R Project  
Tournament House  
Paddington  
London  
W2 1HA

Alternative Reference: See Layout Tab 841 x 297 Sheet 4

Drawing Number: NTPO\SLD\2313\PTFS\001

Sheet: 7 of 9

Revision: C



**Legend**

Cabinet and Verts	Copper Joint	Trough Duct Cable Tray	Signal Box	FTN Core Node	Screen Joint Routeworks	Overbridge	Signal	Engineer's Line Reference	Crossing	Gas Line
Cabinet with Regenerator and Verts	Fibre Joint	Copper Cable	Electrical Control Room	Core Node with GSM-R Colocated	Copper Joint Routeworks	Underbridge	Vehicle Access Point	Mile Post	Gantry	HV Cable
523m Cable Description Copper	Screening Conductor Joint with/without Earth	Fibre Cable	Manhole	FTN Access Node	Cabinet Routeworks	Tunnel	Pedestrian Access Point	Platform	Sewer	LV Cable
540m C-DIDC-RGAC-A 30PR/0.63mm	1988m Cable Description Fibre	492m Cable Description Screening Conductor	Mid Length Sheath Gap Fibre	FTN Access Node with GSM-R Colocated	Fibre Joint Routeworks	Earth Farm	Buffer Stop	Telephone	Water	Cable Pull
2034m F-DIDC-RGAC-A 24 Optic Fibre	218435-517828/314821-519242 150sq mm 19/3.25mm	Sheath Gap Copper	Tunnel	Manhole details: Green-To be used, Red-In use, Clear-Empty	Tunnel	AC Stanchion				

Notes

Rev	Date	Description of Revisions	Drawn	Chkd	Appr
B	17/06/2010	Drawing was previously NTPOSLD23132314001A, Redrawn for as built purposes.	MT	RP	AA
C	16/08/2012	Stage 2 As Built	JAG	MG	JH

Contractor(s)

telecoms power transportation civils

Status: **As-built**

Scale(s): NTS

ELR & Mileage: WPH1

Designed	Michal Taraj	Sign.	Date	17/06/2010
Drawn	Michal Taraj	Sign.	Date	17/06/2010
Checked	Rashmi Patel	Sign.	Date	17/06/2010
Approved	Ajaz Ahmed	Sign.	Date	17/06/2010
Project	FTN / GSM-R Project			
Drawing Title	Liss Station (2313) Petersfield Signal Box (PTFS)			

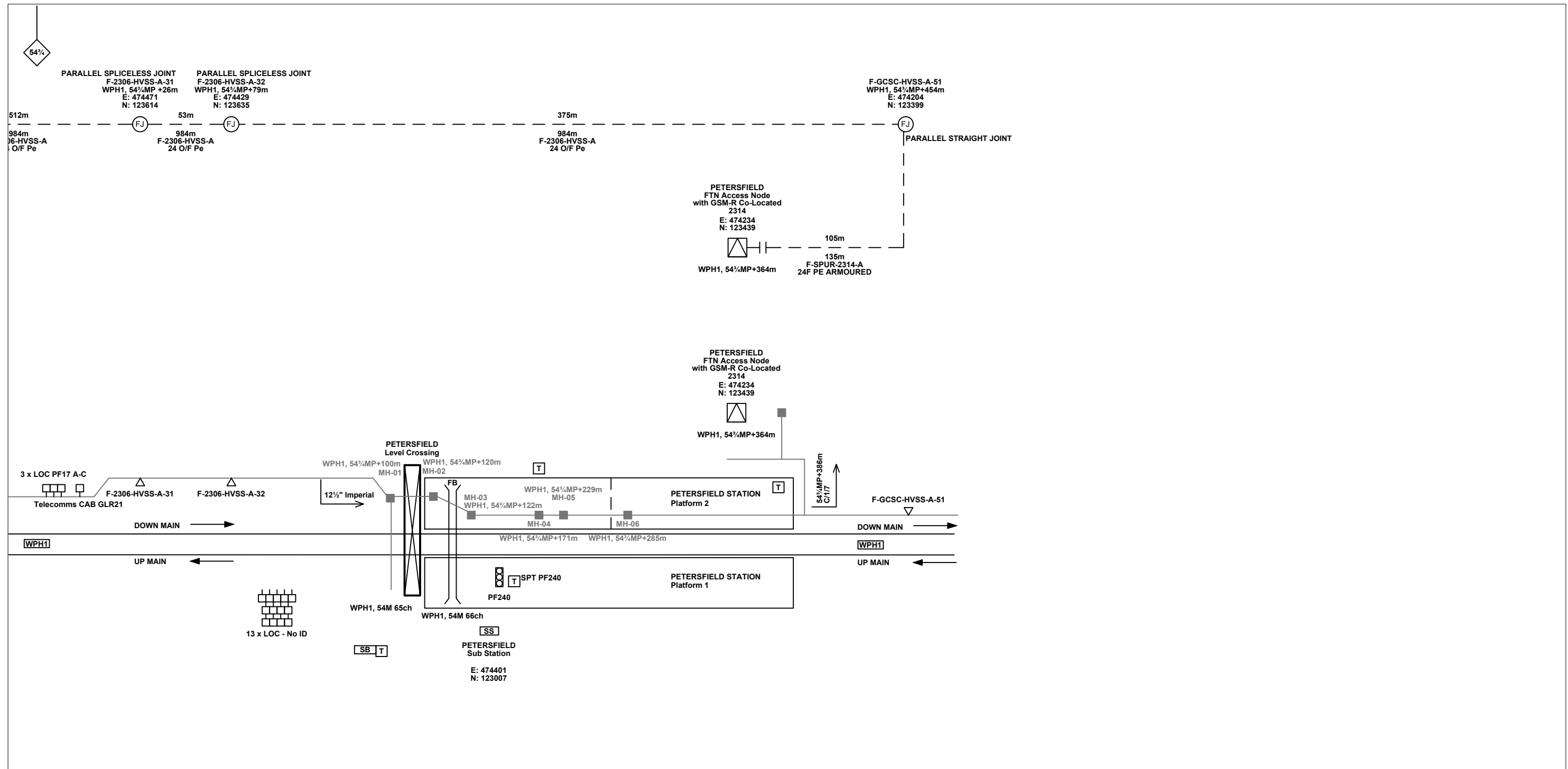
FTN/GSM-R Project  
Tournament House  
Paddington  
London  
W2 1HA

Alternative Reference: See Layout Tab 841 x 297 Sheet 4

Drawing Number: NTPO\SLD\2313\PTFS\001

Sheet: 8 of 9

Revision: C



**Legend**

Cabinet and Verts	Copper Joint	Trough Duct Cable Tray	Signal Box	FTN Core Node	Screen Joint Routeworks	Overbridge	Signal	Engineer's Line Reference	Crossing	GAS	GAS	Gas Line
Cabinet with Regenerator and Verts	Fibre Joint	Copper Cable	Electrical Control Room	Core Node with GSM-R Colocated	Copper Joint Routeworks	Underbridge	Vehicle Access Point	Mile Post	Gantry	HV	HV	HV Cable
523m Cable Description Copper	Screening Conductor Joint with/without Earth	Fibre Cable	Manhole	FTN Access Node	Cabinet Routeworks	Tunnel	Pedestrian Access Point	Platform	SEW	LV	LV	LV Cable
540m C-DIDC-RGAC-A 30PR/0.63mm	1988m Cable Description Fibre	484m Cable Description Screening Conductor	Mid Length Sheath Gap Fibre	FTN Access Node with GSM-R Colocated	Fibre Joint Routeworks	Earth Farm	Buffer Stop	Telephone	v	TEL	TEL	Telecoms
2034m F-DIDC-RGAC-A 24 Optic Fibre	492m Cable Description Screening Conductor	218435-517828/314821-519242 150sq mm 19/3.25mm	Sheath Gap Copper	Manhole details: Green-To be used Red-In use Clear-Empty	Tunnel	Earth Farm	Buffer Stop	Telephone	Cable Pull	Copper Blue Fibre Red Screen Green	AC Stanchion	v

Notes

Rev	Date	Description of Revisions	Drawn	Chkd	Appr
B	17/06/2010	Drawing was previously NTPOSLD23132314001A, Redrawn for as built purposes.	MT	RP	AA
C	16/08/2012	Stage 2 As Built	JAG	MG	JH

Contractor(s)



Signature: C:\Users\jag\Documents\Logos & signatures\Linecode Logo-680x348 07-Sept-10.jpg

Status: **As-built**

Scale(s): NTS

ELR & Mileage: WPH1

Designed	Michal Taraj	Sign.	Date	17/06/2010
Drawn	Michal Taraj	Sign.	Date	17/06/2010
Checked	Rashmi Patel	Sign.	Date	17/06/2010
Approved	Ajaz Ahmed	Sign.	Date	17/06/2010
Project	<b>FTN / GSM-R Project</b>			
Drawing Title	<b>Liss Station (2313) Petersfield Signal Box (PTFS)</b>			



FTN/GSM-R Project  
Tournament House  
Paddington  
London  
W2 1HA

Alternative Reference: See Layout Tab 841 x 297 Sheet 5

Sheet: 9 of 9

Drawing Number: NTPO\SLD\2313\PTFS\001

Revision: C