

Legend

	Cabinet and Verts		Copper Joint		Trough Duct Cable Tray		Signal Box		FTN Core Node		Screen Joint Routeworks		Manhole details: Cross-To be used Filled-In use Clear-Empty		Overbridge		Signal		MLNI		Engineer's Line Reference		Crossing		Gas Line		HV Cable		LV Cable		Sewer		Telecoms		Water
	Cabinet with Regenerator and Verts		Fibre Joint		Cable - Type Identified by FTN Code		Electrical Control Room		Core Node with GSM-R Colocated		Copper Joint Routeworks		Manhole		Underbridge		Vehicle Access Point		Pedestrian Access Point		Mile Post		Gantry		Copper Pull		Copper Blue		Fibre Red		Screen Green		Mast		
	KEY		Screening Conductor		Manhole		Mid Length Sheath Gap Fibre		FTN Access Node		Cabinet Routeworks		Tunnel		Earth Farm		Buffer Stop		Telephone		Cable Pull		Copper Blue		Fibre Red		Screen Green		Mast		Mast		Mast		Mast

Proposed Fibre & Civils Elements are shown in RED
 Proposed Copper Elements are shown in BLUE
 Proposed Screening Elements are shown in MAGENTA
 All Recoveries are shown in GREEN

All Existing Elements are shown in BLACK
 Existing Fibre Cable
 Existing Copper Cable
 Existing Screen Cable

Notes

B	09-01-2013	Amended by NWR to incorporate final Stage 2 detail	PT	PB	GH
AB2	23/08/11	FJ 08 Amended, Electronic Signatures Added, As-Built	AB	DP	PP
AB1	07/05/10	As Built	AB	DP	PP
A	24/11/09	Final Issue	MT	AEL	SW
DA	23/09/08	1st Issue	MT	AEL	SW
Rev	Date	Description of Revisions	Drawn	Chkd	Appr

Contractor(s)

As Built

ELR & Mileage
SDP1

Scale(s)
NTS

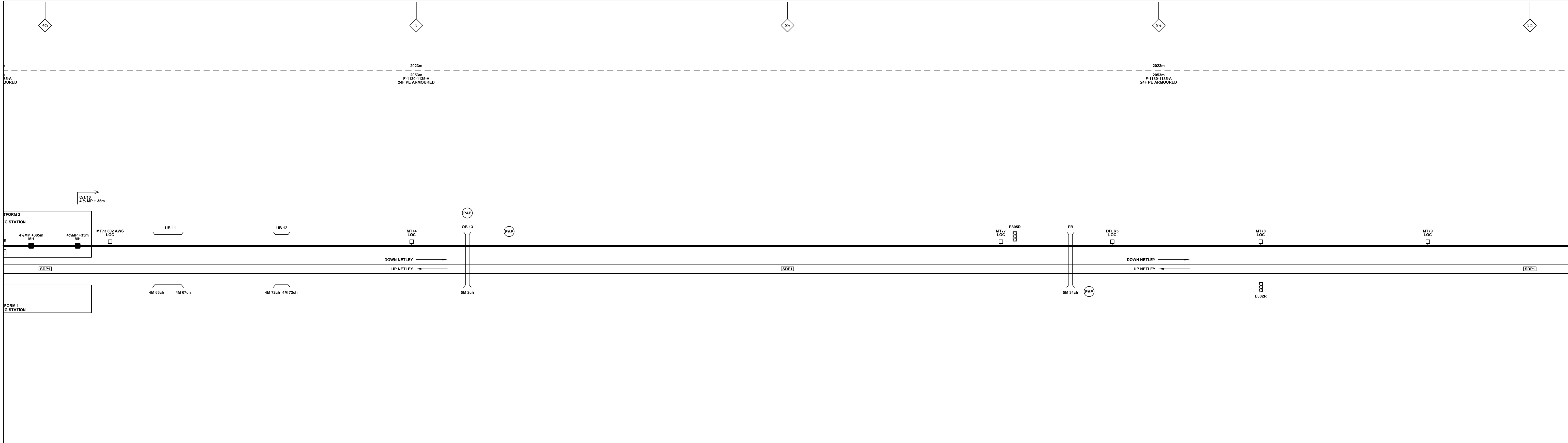
Designed	Andy Bone	Sign.	Date	23/08/2011
Drawn	Andy Bone	Sign.	Date	23/08/2011
Checked	Dave Peakman	Sign.	Date	23/08/2011
Approved	Prakash Patel (C.R.E)	Sign.	Date	23/08/2011
Project	FTN/GSM-R Project Stage 2 As-Built			
Drawing Title	Woolston Station (1131) to Bursledon (1132)			

FTN/GSM-R Project
Tournament House
Passington
London
W2 1HA

Alternative Reference
See Layout Tab A3 Sheets 1 and 2

Drawing Number
NTPO\SLD\1131\1132\001

Sheet 1 of 4
Revision B



Legend

	Cabinet and Verts		Copper Joint		Trough Duct Cable Tray		Signal Box		FTN Core Node		Screen Joint Routeworks		Manhole		Overbridge		Signal		Engineer's Line Reference	
	Cabinet with Regenerator and Verts		Fibre Joint		Cable - Type Identified by FTN Code Status - as per Key Below		Electrical Control Room		Core Node with GSM-R Colocated		Copper Joint Routeworks		Manhole details: Cross-To be used Filled-In use Clear-Empty		Underbridge		Vehicle Access Point		Mile Post	
	KEY Proposed Fibre & Civils Elements are shown in RED Proposed Copper Elements are shown in BLUE Proposed Screening Elements are shown in MAGENTA All Recoveries are shown in GREEN		Screening Conductor Joint with/without Earth		1988m Cable		Mid Length Sheath Gap Fibre		FTN Access Node		Cabinet Routeworks		Tunnel		Earth Farm		Pedestrian Access Point		Platform	
		All Existing Elements are shown in BLACK		2034m Cable		Sheath Gap Copper		FTN Access Node with GSM-R Colocated		Fibre Joint Routeworks		Buffer Stop		Telephone		Cable Pull		Mast		Gas Line
		Existing Fibre Cable		Existing Copper Cable		Gas		HV Cable		LV Cable		Sewer		Telecoms		Water		Crossing		Gantry
		Existing Screen Cable		Gas		HV Cable		LV Cable		Sewer		Telecoms		Water		Crossing		Gantry		

Notes

Rev	Date	Description of Revisions	Drawn	Chkd	Appr
B	09-01-2013	Amended by NWR to incorporate final Stage 2 detail	PT	PB	GH
AB2	23/08/11	FJ 08 Amended, Electronic Signatures Added, As-Built	AB	DP	PP
AB1	07/05/10	As Built	AB	DP	PP
A	24/11/09	Final Issue	MT	AEL	SW
DA	23/09/08	1st Issue	MT	AEL	SW
Rev	Date	Description of Revisions	Drawn	Chkd	Appr

Contractor(s)

As Built

ELR & Mileage
SDP1

Designed	Andy Bone	Sign.	Date	23/08/2011
Drawn	Andy Bone	Sign.	Date	23/08/2011
Checked	Dave Peakman	Sign.	Date	23/08/2011
Approved	Prakash Patel (C.R.E)	Sign.	Date	23/08/2011

Project
FTN/GSM-R Project
Stage 2 As-Built

Drawing Title
Woolston Station (1131) to
Bursledon (1132)

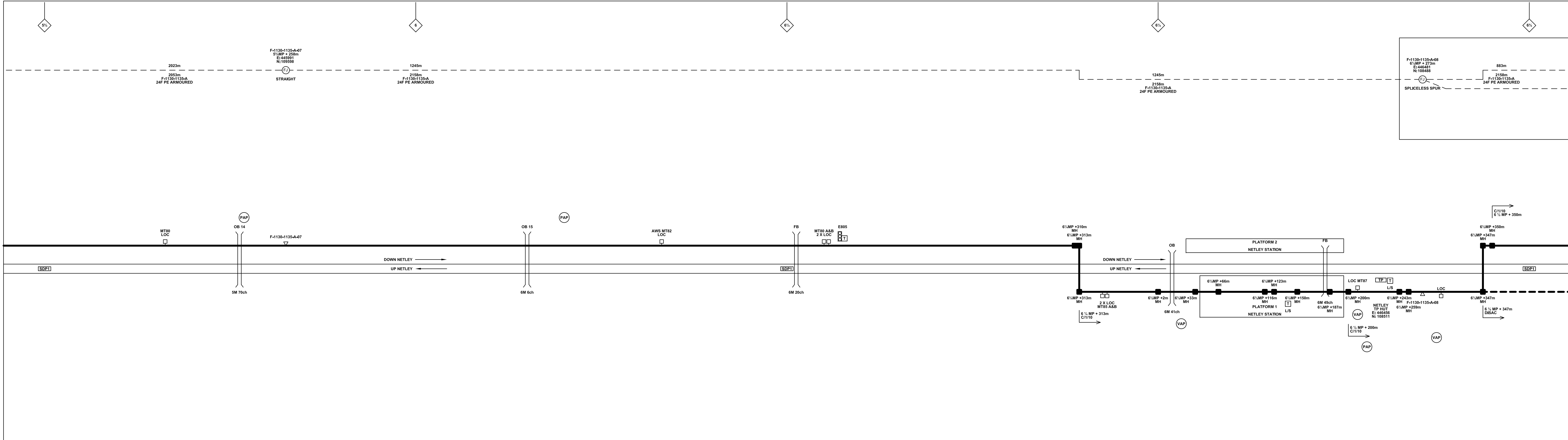
FTN/GSM-R Project
Tournament House
Passington
London
W2 1HA

Alternative Reference
See Layout Tab A3 Sheets 3 and 4

Drawing Number
NTPO\SLD\1131\1132\001

Revision
2 of 4
B

Sheet Size 841x297



Notes

B	09-01-2013	Amended by NWR to incorporate final Stage 2 detail	PT	PB	GH
AB2	23/08/11	FJ 08 Amended, Electronic Signatures Added, As-Built	AB	DP	PP
AB1	07/05/10	As Built	AB	DP	PP
A	24/11/09	Final Issue	MT	AEL	SW
DA	23/09/08	1st Issue	MT	AEL	SW
Rev	Date	Description of Revisions	Drawn	Chkd	Appr

Contractor(s)

As Built

ELR & Mileage
SDP1

Scale(s)
NTS

Designed	Andy Bone	Sign.	Date	23/08/2011
Drawn	Andy Bone	Sign.	Date	23/08/2011
Checked	Dave Peakman	Sign.	Date	23/08/2011
Approved	Prakash Patel (C.R.E)	Sign.	Date	23/08/2011

Project

FTN/GSM-R Project Stage 2 As-Built

Drawing Title

Woolston Station (1131) to Bursledon (1132)

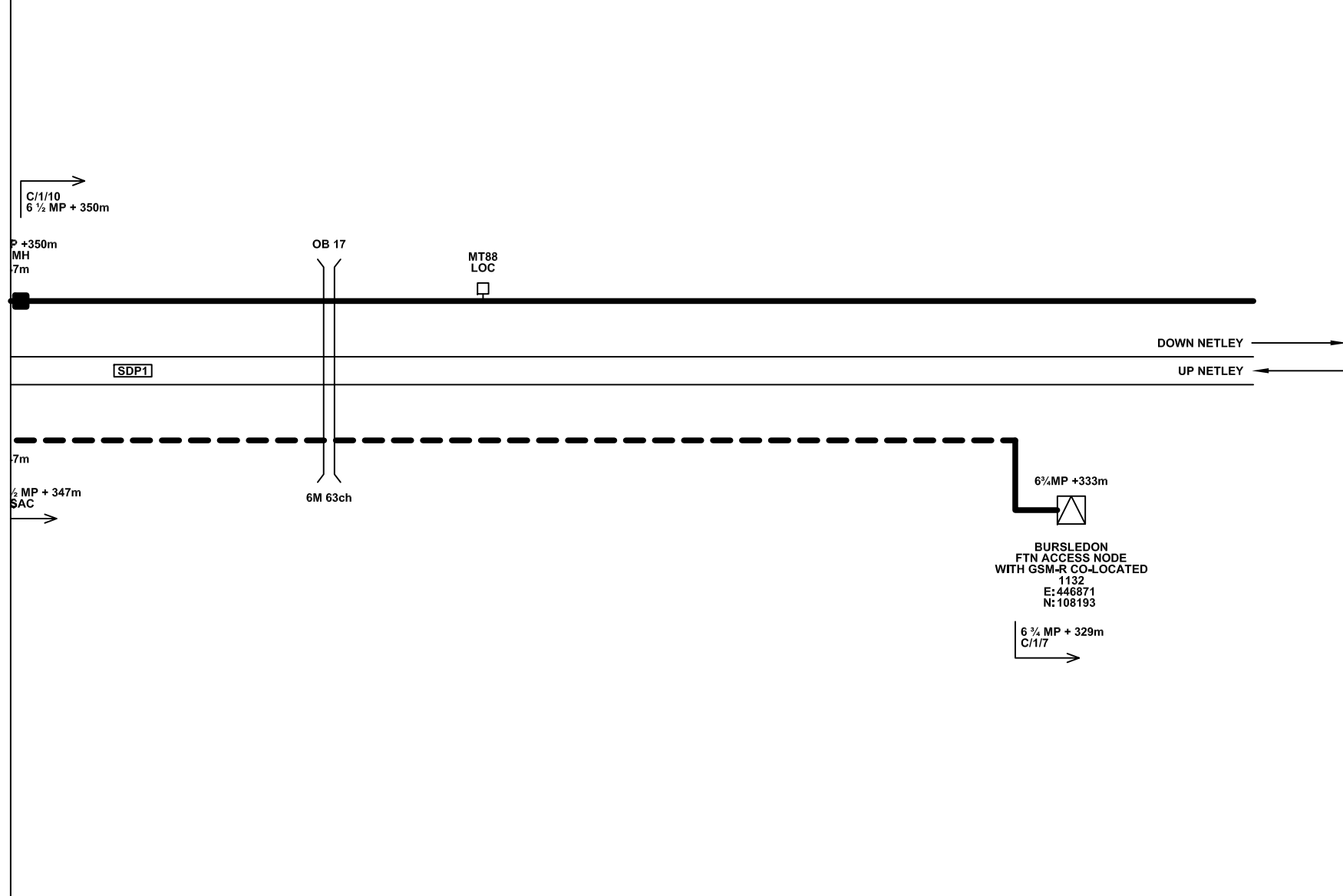
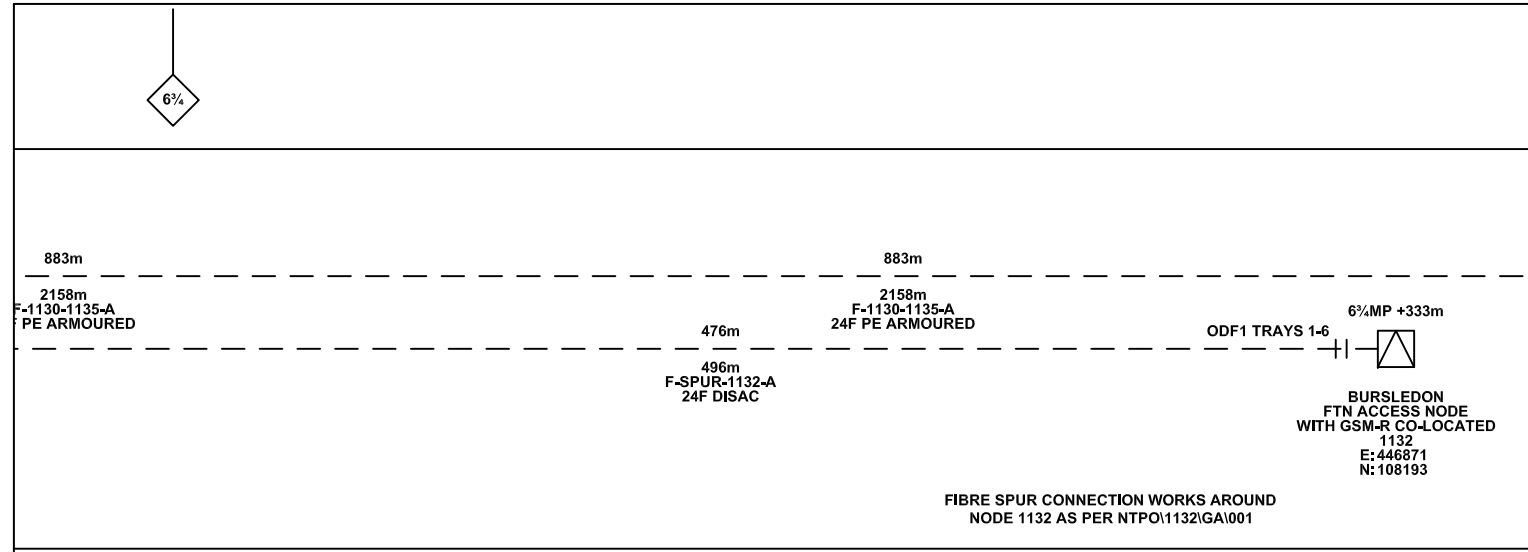
Alternative Reference

See Layout Tab A3 Sheets 5 and 6

Drawing Number
NTPO\SLD\1131\1132\001

Revision
B

Sheet
3 of 4



Legend

Cabinet and Verts	Copper Joint	Trough Duct Cable Tray	Signal Box	FTN Core Node	Screen Joint Routeworks	Manhole	Overbridge	Signal	Engineer's Line Reference	Crossing	Gas Line
Cabinet with Regenerator and Verts	Fibre Joint	Cable - Type Identified by FTN Code Status - as per Key Below	Electrical Control Room	Core Node with GSM-R Colocated	Copper Joint Routeworks	Mid Length Sheath Gap Fibre	Underbridge	Vehicle Access Point	Mile Post	Gantry	HV Cable
KEY Proposed Fibre & Civils Elements are shown in RED Proposed Copper Elements are shown in BLUE Proposed Screening Elements are shown in MAGENTA All Recoveries are shown in GREEN	Screening Conductor Joint with/without Earth	Manhole	Manhole	FTN Access Node	Cabinet Routeworks	Sheath Gap Copper	Tunnel	Pedestrian Access Point	Platform	Sewer	LV Cable
	Manhole	Manhole	Manhole	FTN Access Node with GSM-R Colocated	Fibre Joint Routeworks	Manhole	Earth Farm	Buffer Stop	Telephone	Telecoms	Water

Manhole details: Cross-To be used Filled-In use Clear-Empty

Notes

Rev	Date	Description of Revisions	Drawn	Chkd	Appr
B	09-01-2013	Amended by NWR to incorporate final Stage 2 detail	PT	PB	GH
AB2	23/08/11	FJ 08 Amended, Electronic Signatures Added, As-Built	AB	DP	PP
AB1	07/05/10	As Built	AB	DP	PP
A	24/11/09	Final Issue	MT	AEL	SW
DA	23/09/08	1st Issue	MT	AEL	SW

Contractor(s)

As Built

Scale(s): NTS
ELR & Mileage: SDP1

Designed	Andy Bone	Sign.		Date	23/08/2011
Drawn	Andy Bone	Sign.		Date	23/08/2011
Checked	Dave Peakman	Sign.		Date	23/08/2011
Approved	Prakash Patel (C.R.E)	Sign.		Date	23/08/2011

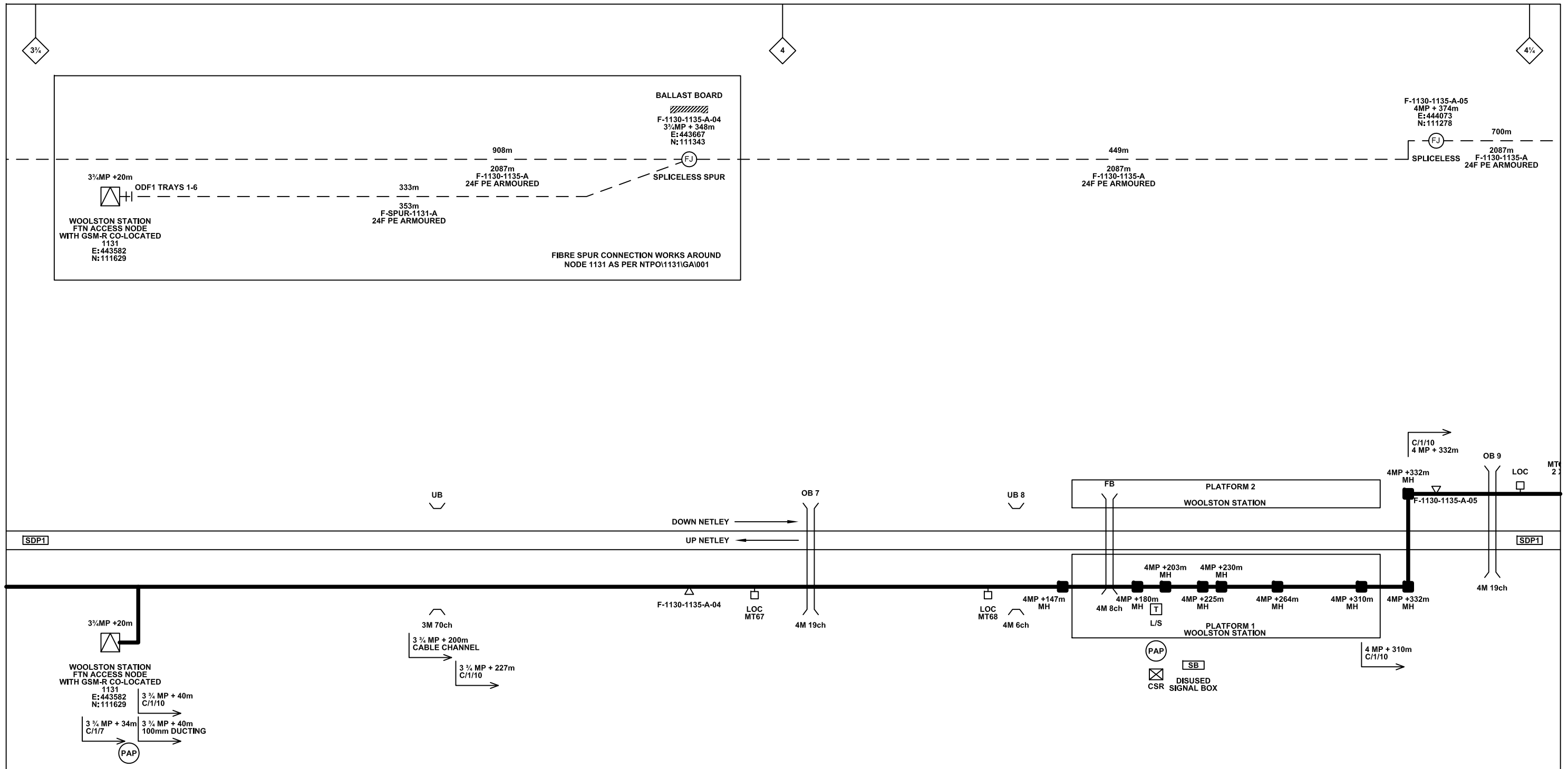
FTN/GSM-R Project Stage 2 As-Built

Drawing Title: Woolston Station (1131) to Bursledon (1132)

Alternative Reference: See Layout Tab A3 Sheet 7

Drawing Number: NTP01SLD\1131\1132\001

Sheet: 4 of 4
Revision: B



Legend

Cabinet and Verts	Copper Joint	Trough Duct Cable Tray	Signal Box	FTN Core Node	Screen Joint Routeworks	Overbridge	Signal	Engineer's Line Reference	Crossing	Gas Line
Cabinet with Regenerator and Verts	Fibre Joint	Cable - Type Identified by FTN Code	Electrical Control Room	Core Node with GSM-R Colocated	Copper Joint Routeworks	Underbridge	Vehicle Access Point	Mile Post	HV Cable	LV Cable
KEY	Screening Conductor Joint with/without Earth	Status - as per Key Below	Manhole	FTN Access Node	Cabinet Routeworks	Tunnel	Pedestrian Access Point	Platform	Sewer	Telecoms
Proposed Fibre & Civils Elements are shown in RED	All Existing Elements are shown in BLACK	Existing Fibre Cable	Mid Length Sheath Gap Fibre	FTN Access Node with GSM-R Colocated	Fibre Joint Routeworks	Earth Farm	Buffer Stop	Telephone	Water	Mast
Proposed Copper Elements are shown in BLUE	Existing Copper Cable	Existing Screen Cable	Sheath Gap Copper							
Proposed Screening Elements are shown in MAGENTA										
All Recoveries are shown in GREEN										

Notes

B	09-01-2013	Amended by NWR to incorporate final Stage 2 detail	PT	PB	GH
AB2	23/08/11	FJ 08 Amended, Electronic Signatures Added, As-Built	AB	DP	PP
AB1	07/05/10	As Built	AB	DP	PP
A	24/11/09	Final Issue	MT	AEL	SW
DA	23/09/08	1st Issue	MT	AEL	SW
Rev	Date	Description of Revisions	Drawn	Chkd	Appr

Contractor(s)

As Built

Scale(s) NTS

ELR & Mileage SDP1

Designed	Andy Bone	Sign.	Date	23/08/2011
Drawn	Andy Bone	Sign.	Date	23/08/2011
Checked	Dave Peakman	Sign.	Date	23/08/2011
Approved	Prakash Patel (C.R.E)	Sign.	Date	23/08/2011
Project	FTN/GSM-R Project Stage 2 As-Built			
Drawing Title	Woolston Station (1131) to Bursledon (1132)			

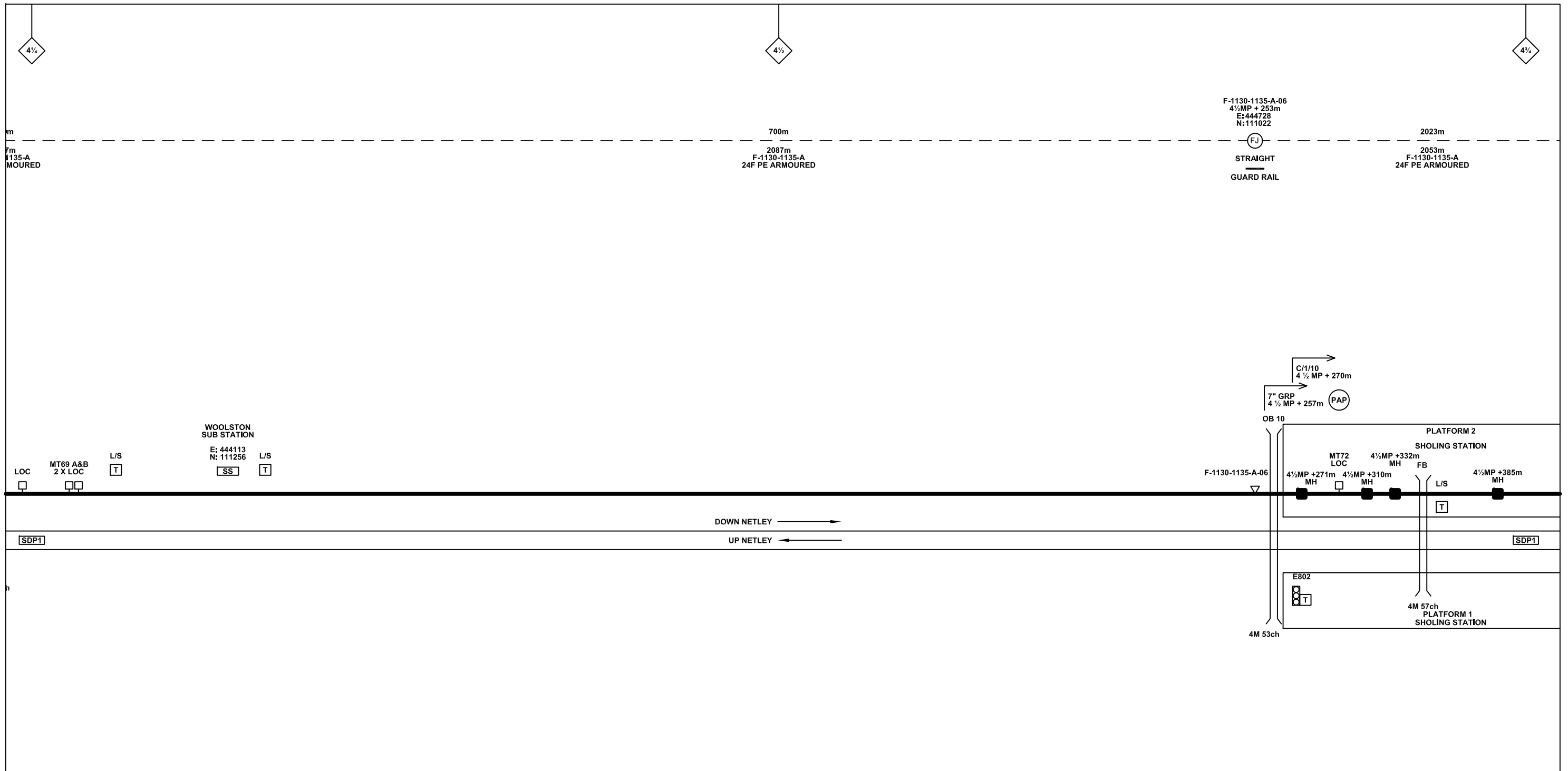
FTN/GSM-R Project
Tournament House
Paddington
London
W2 1HA

Alternative Reference See Layout Tab 841 x 297 Sheet 1

Drawing Number NTPO\SLD\1131\1132\001

Sheet 1 of 7

Revision B



Legend

Cabinet and Verts	Copper Joint	Trough Duct Cable Tray	Signal Box	FTN Core Node	Screen Joint Routeworks	Overbridge	Signal	Engineer's Line Reference	Crossing	Gas Line
Cabinet with Regenerator and Verts	Fibre Joint	Cable - Type Identified by FTN Code	Electrical Control Room	Core Node with GSM-R Colocated	Copper Joint Routeworks	Underbridge	Vehicle Access Point	Mile Post	HV Cable	LV Cable
KEY Proposed Fibre & Civils Elements are shown in RED Proposed Copper Elements are shown in BLUE Proposed Screening Elements are shown in MAGENTA All Recoveries are shown in GREEN	Screening Conductor Joint with/without Earth	Manhole	Mid Length Sheath Gap Fibre	FTN Access Node	Cabinet Routeworks	Tunnel	Pedestrian Access Point	Platform	Sewer	Telecoms
	Status - as per Key Below	Sheath Gap Copper	FTN Access Node with GSM-R Colocated	Fibre Joint Routeworks	Earth Farm	Buffer Stop	Telephone	Copper Blue Fibre Red Screen Green	Mast	

Notes

Rev	Date	Description of Revisions	Drawn	Chkd	Appr
B	09-01-2013	Amended by NWR to incorporate final Stage 2 detail	PT	PB	GH
AB2	23/08/11	FJ 08 Amended, Electronic Signatures Added, As-Built	AB	DP	PP
AB1	07/05/10	As Built	AB	DP	PP
A	24/11/09	Final Issue	MT	AEL	SW
DA	23/09/08	1st Issue	MT	AEL	SW

Contractor(s)

Status: **As Built**

Scale(s): NTS

ELR & Mileage: SDP1

Designed	Andy Bone	Sign.	Date	23/08/2011
Drawn	Andy Bone	Sign.	Date	23/08/2011
Checked	Dave Peakman	Sign.	Date	23/08/2011
Approved	Prakash Patel (C.R.E)	Sign.	Date	23/08/2011
Project	FTN/GSM-R Project Stage 2 As-Built			
Drawing Title	Woolston Station (1131) to Bursledon (1132)			

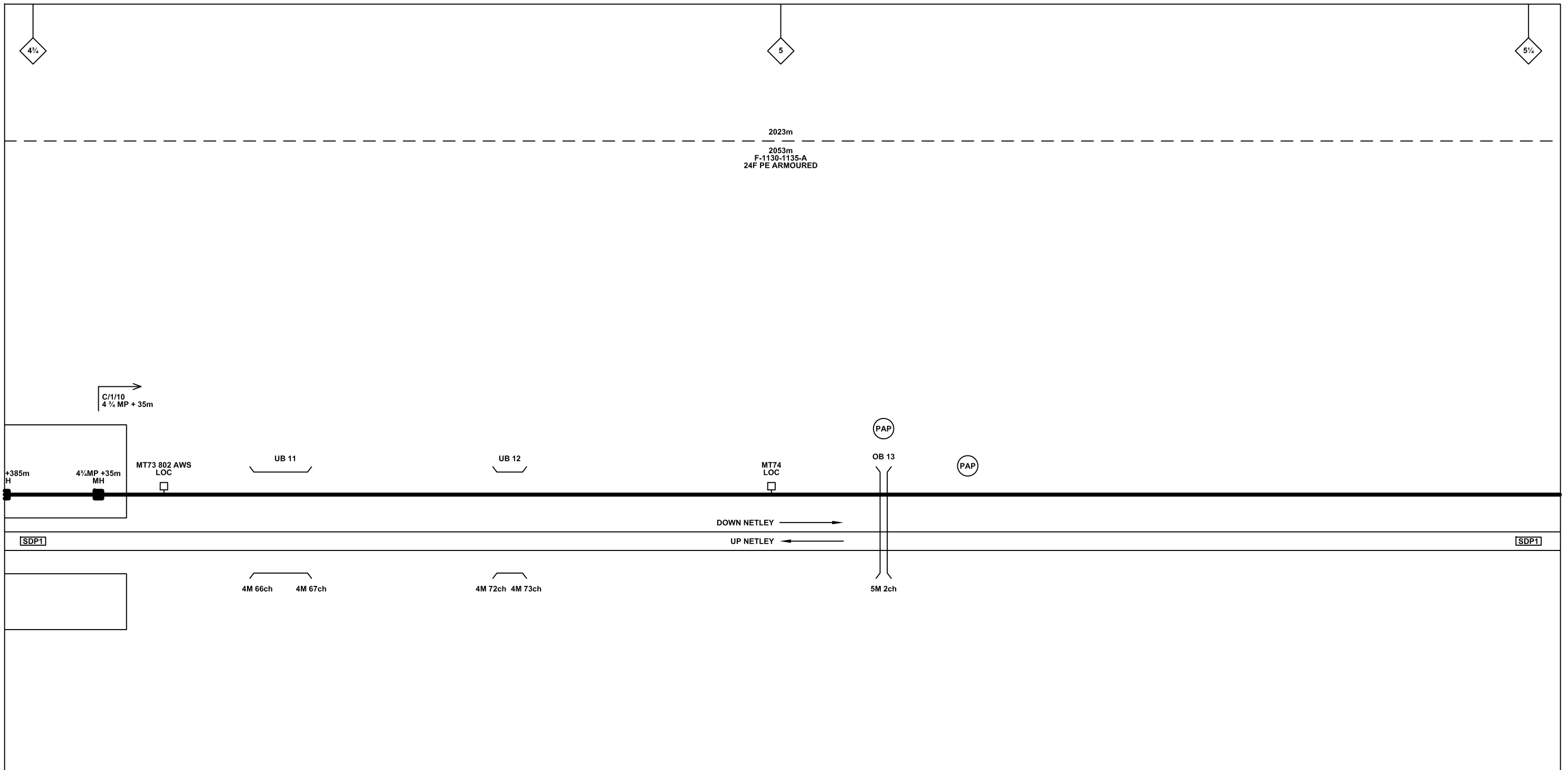
FTN/GSM-R Project
Tournament House
London
W2 1HA

Alternative Reference: See Layout Tab 841 x 297 Sheet 1

Drawing Number: NTPO\SLD\1131\1132\001

Revision: **B**

Sheet: 2 of 7



Legend

Cabinet and Verts	Copper Joint	Trough Duct Cable Tray	Signal Box	FTN Core Node	Screen Joint Routeworks	Overbridge	Signal	Engineer's Line Reference	Crossing	GAS — GAS — GAS — Gas Line
Cabinet with Regenerator and Verts	Fibre Joint	Cable - Type Identified by FTN Code	Electrical Control Room	Core Node with GSM-R Colocated	Copper Joint Routeworks	Underbridge	Vehicle Access Point	Mile Post	HV — HV — HV — HV Cable	LV — LV — LV — LV Cable
KEY Proposed Fibre & Civils Elements are shown in RED Proposed Copper Elements are shown in BLUE Proposed Screening Elements are shown in MAGENTA All Recoveries are shown in GREEN	Screening Conductor Joint with/without Earth	Status - as per Key Below	Manhole	FTN Access Node	Cabinet Routeworks	Manhole details: Cross-To be used, Filled-In use, Clear-Empty	Pedestrian Access Point	Platform	SEW — SEW — SEW — Sewer	TEL — TEL — TEL — Telecoms
All Existing Elements are shown in BLACK	Existing Fibre Cable	Existing Copper Cable	Mid Length Sheath Gap Fibre	FTN Access Node with GSM-R Colocated	Fibre Joint Routeworks	Tunnel	Earth Farm	Buffer Stop	v — v — v — Water	Mast

Notes

Rev	Date	Description of Revisions	Drawn	Chkd	Appr
B	09-01-2013	Amended by NWR to incorporate final Stage 2 detail	PT	PB	GH
AB2	23/08/11	FJ 08 Amended, Electronic Signatures Added, As-Built	AB	DP	PP
AB1	07/05/10	As Built	AB	DP	PP
A	24/11/09	Final Issue	MT	AEL	SW
DA	23/09/08	1st Issue	MT	AEL	SW

Contractor(s)

Status: **As Built**

Scale(s): NTS

ELR & Mileage: SDP1

Designed	Andy Bone	Sign.	Date	23/08/2011
Drawn	Andy Bone	Sign.	Date	23/08/2011
Checked	Dave Peakman	Sign.	Date	23/08/2011
Approved	Prakash Patel (C.R.E)	Sign.	Date	23/08/2011
Project	FTN/GSM-R Project Stage 2 As-Built			
Drawing Title	Woolston Station (1131) to Bursledon (1132)			

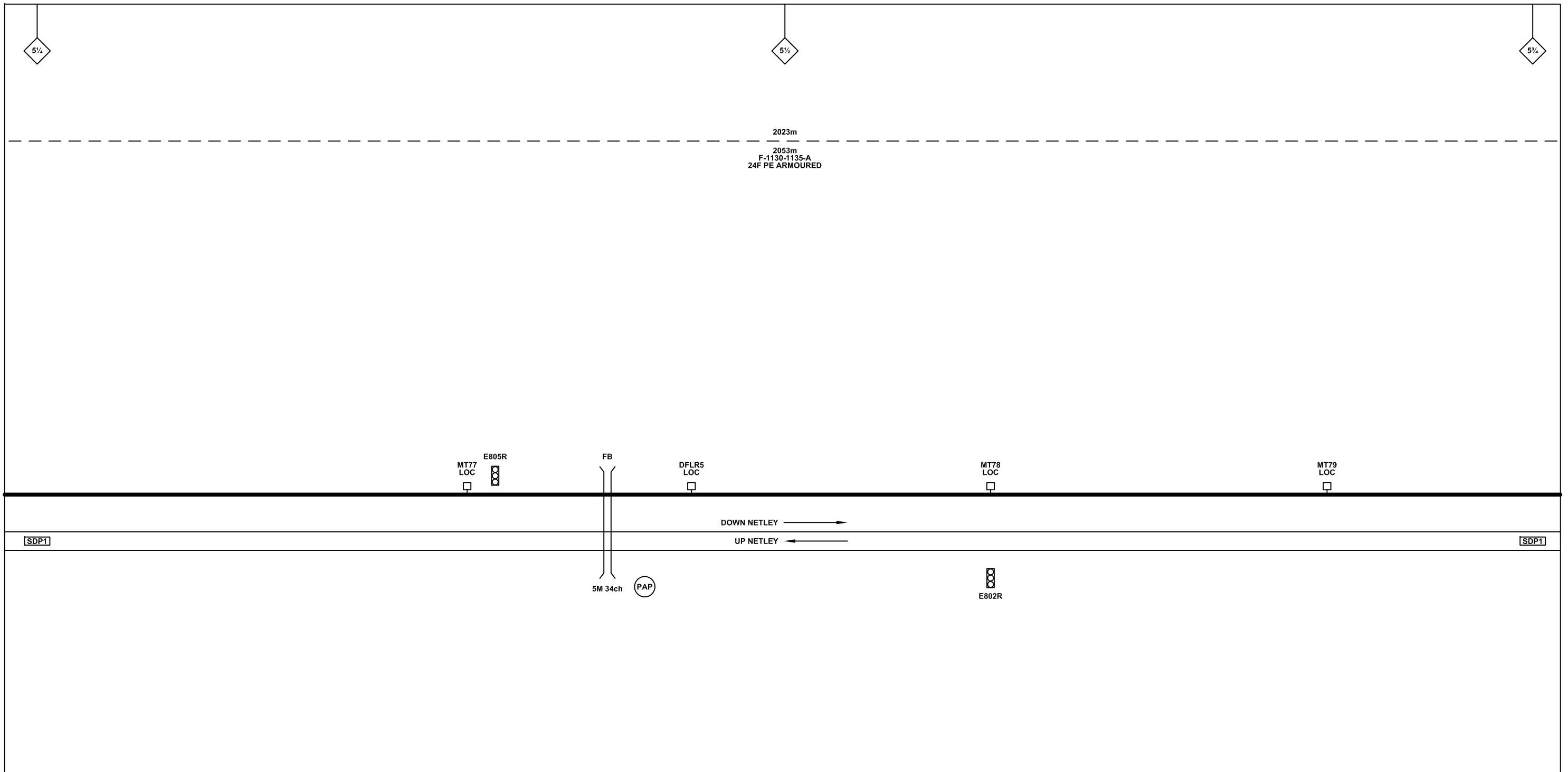
FTN/GSM-R Project
Tournament House
Paddington
London
W2 1HA

Alternative Reference: See Layout Tab 841 x 297 Sheet 2

Drawing Number: NTPO\SLD\1131\1132\001

Sheet: 3 of 7

Revision: B



Legend

Cabinet and Verts	Copper Joint	Trough Duct Cable Tray	Signal Box	FTN Core Node	Screen Joint Routeworks	Overbridge	Signal	Engineer's Line Reference	Crossing	Gas Line
Cabinet with Regenerator and Verts	Fibre Joint	Cable - Type Identified by FTN Code	Electrical Control Room	Core Node with GSM-R Colocated	Copper Joint Routeworks	Manhole	Vehicle Access Point	Mile Post	HV Cable	LV Cable
KEY Proposed Fibre & Civils Elements are shown in RED Proposed Copper Elements are shown in BLUE Proposed Screening Elements are shown in MAGENTA All Recoveries are shown in GREEN	Screening Conductor Joint with/without Earth	Status - as per Key Below	Mid Length Sheath Gap Fibre	FTN Access Node	Cabinet Routeworks	Manhole details: Cross-To be used, Filled-In use, Clear-Empty	Pedestrian Access Point	Platform	Sewer	Telecoms
	Existing Fibre Cable	Existing Copper Cable	Sheath Gap Copper	FTN Access Node with GSM-R Colocated	Fibre Joint Routeworks	Tunnel	Earth Farm	Gantry	Water	Mast
	Existing Screen Cable					Underbridge	Buffer Stop	Telephone		

Rev	Date	Description of Revisions	Drawn	Chkd	Appr
B	09-01-2013	Amended by NWR to incorporate final Stage 2 detail	PT	PB	GH
AB2	23/08/11	FJ 08 Amended, Electronic Signatures Added, As-Built	AB	DP	PP
AB1	07/05/10	As Built	AB	DP	PP
A	24/11/09	Final Issue	MT	AEL	SW
DA	23/09/08	1st Issue	MT	AEL	SW

Contractor(s)

Status: **As Built**

Scale(s): NTS

ELR & Mileage: SDP1

Designed	Andy Bone	Sign.	Date	23/08/2011
Drawn	Andy Bone	Sign.	Date	23/08/2011
Checked	Dave Peakman	Sign.	Date	23/08/2011
Approved	Prakash Patel (C.R.E)	Sign.	Date	23/08/2011
Project	FTN/GSM-R Project Stage 2 As-Built			
Drawing Title	Woolston Station (1131) to Bursledon (1132)			

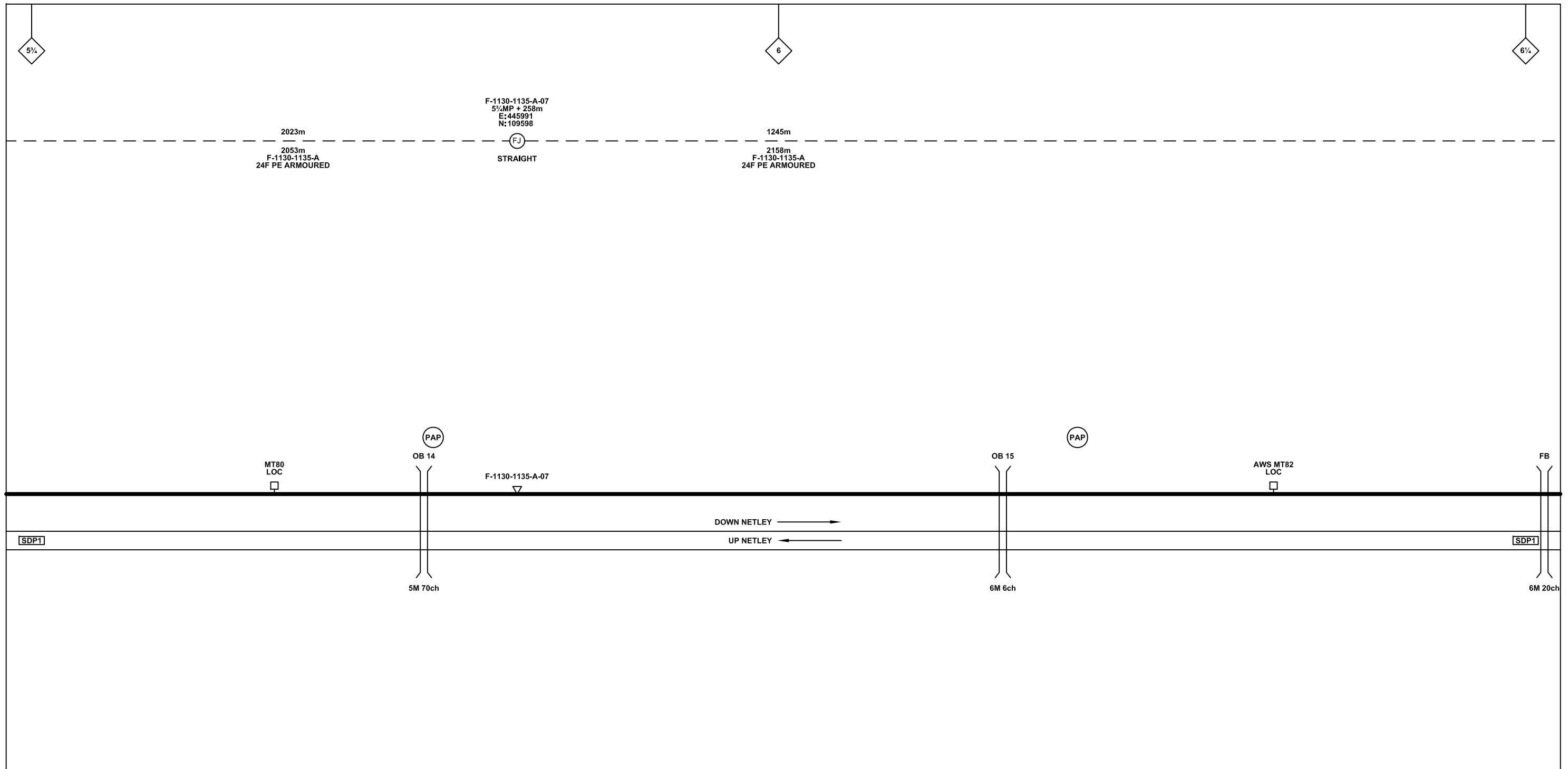
FTN/GSM-R Project
Tournament House
Paddington
London
W2 1HA

Alternative Reference: See Layout Tab 841 x 297 Sheet 2

Drawing Number: NTPO\SLD\1131\1132\001

Sheet: 4 of 7

Revision: B



Legend

Cabinet and Verts	Copper Joint	Trough Duct Cable Tray	Signal Box	FTN Core Node	Screen Joint Routeworks	Overbridge	Signal	Engineer's Line Reference	Crossing	Gas Line
Cabinet with Regenerator and Verts	Fibre Joint	Cable - Type Identified by FTN Code	Electrical Control Room	Core Node with GSM-R Colocated	Copper Joint Routeworks	Underbridge	Vehicle Access Point	Mile Post	HV Cable	LV Cable
KEY Proposed Fibre & Civils Elements are shown in RED Proposed Copper Elements are shown in BLUE Proposed Screening Elements are shown in MAGENTA All Recoveries are shown in GREEN	Screening Conductor Joint with/without Earth	Status - as per Key Below	Manhole	FTN Access Node	Cabinet Routeworks	Manhole details: Cross-To be used, Filled-In use, Clear-Empty	Pedestrian Access Point	Platform	Sewer	Telecoms
		Existing Fibre Cable	Mid Length Sheath Gap Fibre	FTN Access Node with GSM-R Colocated	Fibre Joint Routeworks	Tunnel	Earth Farm	Buffer Stop	Water	Mast
		Existing Copper Cable	Sheath Gap Copper					Telephone		
		Existing Screen Cable							Cable Pull	

Notes

Rev	Date	Description of Revisions	Drawn	Chkd	Appr
B	09-01-2013	Amended by NWR to incorporate final Stage 2 detail	PT	PB	GH
AB2	23/08/11	FJ 08 Amended, Electronic Signatures Added, As-Built	AB	DP	PP
AB1	07/05/10	As Built	AB	DP	PP
A	24/11/09	Final Issue	MT	AEL	SW
DA	23/09/08	1st Issue	MT	AEL	SW

Contractor(s)

Status: **As Built**

Scale(s): NTS

ELR & Mileage: SDP1

Designed	Andy Bone	Sign.	Date	23/08/2011
Drawn	Andy Bone	Sign.	Date	23/08/2011
Checked	Dave Peakman	Sign.	Date	23/08/2011
Approved	Prakash Patel (C.R.E)	Sign.	Date	23/08/2011
Project	FTN/GSM-R Project Stage 2 As-Built			
Drawing Title	Woolston Station (1131) to Bursledon (1132)			

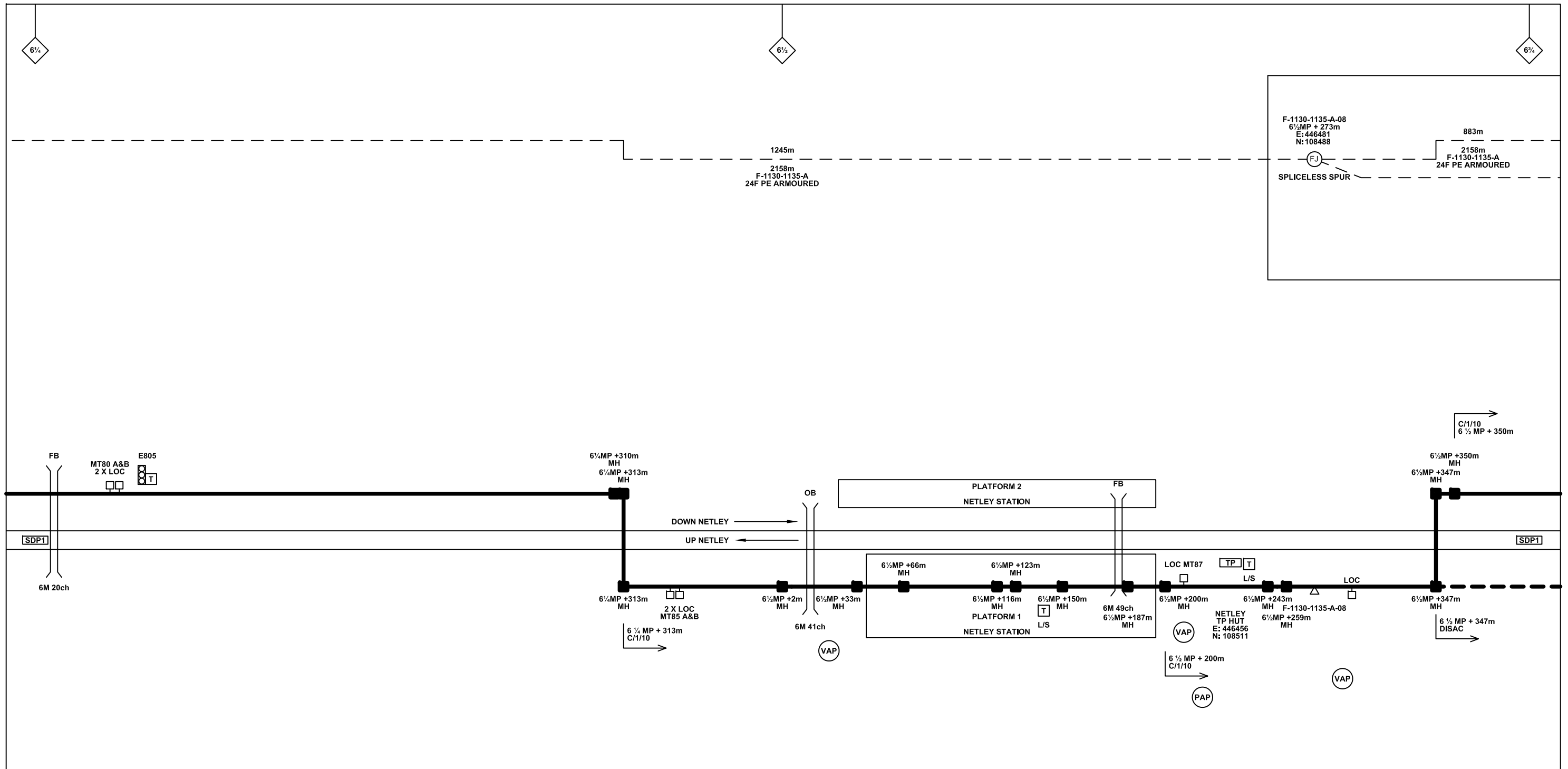
FTN/GSM-R Project
Tournament House
Paddington
London
W2 1HA

Alternative Reference: See Layout Tab 841 x 297 Sheet 3

Drawing Number: NTPO\SLD\1131\1132\001

Sheet: 5 of 7

Revision: B



Legend

Cabinet and Verts	Copper Joint	Trough Duct Cable Tray	Signal Box	FTN Core Node	Screen Joint Routeworks	Overbridge	Signal	Engineer's Line Reference	Crossing	GAS — GAS — GAS — Gas Line
Cabinet with Regenerator and Verts	Fibre Joint	Cable - Type Identified by FTN Code	Electrical Control Room	Core Node with GSM-R Colocated	Copper Joint Routeworks	Underbridge	VAP	Mile Post	HV — HV — HV — HV Cable	LV — LV — LV — LV Cable
KEY	Screening Conductor Joint with/without Earth	Manhole	Mid Length Sheath Gap Fibre	FTN Access Node	Cabinet Routeworks	Tunnel	PAP	Platform	SEW — SEW — SEW — Sewer	TEL — TEL — TEL — Telecoms
Proposed Fibre & Civils Elements are shown in RED	All Existing Elements are shown in BLACK	Sheath Gap Copper	FTN Access Node with GSM-R Colocated	Fibre Joint Routeworks	Earth Farm	Buffer Stop	Telephone	Cable Pull	W — W — W — Water	Mast
Proposed Copper Elements are shown in BLUE	Existing Fibre Cable									
Proposed Screening Elements are shown in MAGENTA	Existing Copper Cable									
All Recoveries are shown in GREEN	Existing Screen Cable									

Notes

Rev	Date	Description of Revisions	Drawn	Chkd	Appr
B	09-01-2013	Amended by NWR to incorporate final Stage 2 detail	PT	PB	GH
AB2	23/08/11	FJ 08 Amended, Electronic Signatures Added, As-Built	AB	DP	PP
AB1	07/05/10	As Built	AB	DP	PP
A	24/11/09	Final Issue	MT	AEL	SW
DA	23/09/08	1st Issue	MT	AEL	SW

Contractor(s)

Status: **As Built**

Scale(s): NTS

ELR & Mileage: SDP1

Designed	Andy Bone	Sign.	Date	23/08/2011
Drawn	Andy Bone	Sign.	Date	23/08/2011
Checked	Dave Peakman	Sign.	Date	23/08/2011
Approved	Prakash Patel (C.R.E)	Sign.	Date	23/08/2011
Project	FTN/GSM-R Project Stage 2 As-Built			
Drawing Title	Woolston Station (1131) to Bursledon (1132)			

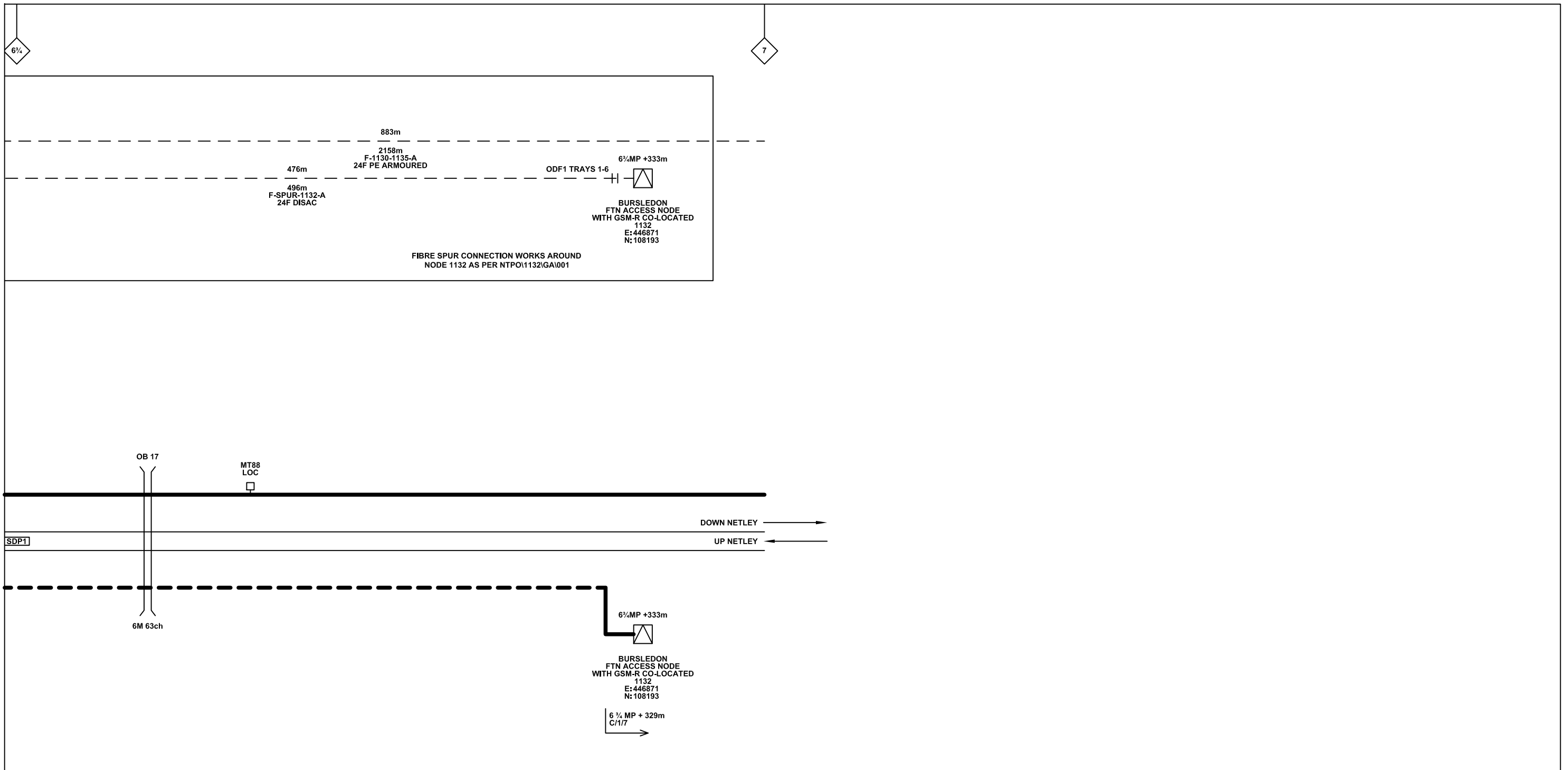
FTN/GSM-R Project
Tournament House
Paddington
London
W2 1HA

Alternative Reference: See Layout Tab 841 x 297 Sheet 3

Drawing Number: NTPO\SLD\1131\1132\001

Sheet: 6 of 7

Revision: B



Legend

Cabinet and Verts	Copper Joint	Trough Duct Cable Tray	Signal Box	FTN Core Node	Screen Joint Routeworks	Overbridge	Signal	Engineer's Line Reference	Crossing	GAS — GAS — Gas Line
Cabinet with Regenerator and Verts	Fibre Joint	Cable - Type Identified by FTN Code	Electrical Control Room	Core Node with GSM-R Colocated	Copper Joint Routeworks	Underbridge	VAP Vehicle Access Point	Mile Post	Gantry	HV — HV — HV Cable
KEY Proposed Fibre & Civils Elements are shown in RED Proposed Copper Elements are shown in BLUE Proposed Screening Elements are shown in MAGENTA All Recoveries are shown in GREEN	Screening Conductor Joint with/without Earth	Status - as per Key Below	Manhole	FTN Access Node	Cabinet Routeworks	Manhole details: Cross-To be used, Filled-In use, Clear-Empty	PAP Pedestrian Access Point	Platform	SEW — SEW — Sewer	W — W — Water
		Existing Fibre Cable	Mid Length Sheath Gap Fibre	FTN Access Node with GSM-R Colocated	Fibre Joint Routeworks	Tunnel	Earth Farm	Buffer Stop	Telephone	Copper Blue Fibre Red Screen Green
		Existing Copper Cable	Sheath Gap Copper							Mast

Notes

Rev	Date	Description of Revisions	Drawn	Chkd	Appr
B	09-01-2013	Amended by NWR to incorporate final Stage 2 detail	PT	PB	GH
AB2	23/08/11	FJ 08 Amended, Electronic Signatures Added, As-Built	AB	DP	PP
AB1	07/05/10	As Built	AB	DP	PP
A	24/11/09	Final Issue	MT	AEL	SW
DA	23/09/08	1st Issue	MT	AEL	SW

Contractor(s)

Status: **As Built**

Scale(s): NTS

ELR & Mileage: SDP1

Designed	Andy Bone	Sign.	Date	23/08/2011
Drawn	Andy Bone	Sign.	Date	23/08/2011
Checked	Dave Peakman	Sign.	Date	23/08/2011
Approved	Prakash Patel (C.R.E)	Sign.	Date	23/08/2011
Project	FTN/GSM-R Project Stage 2 As-Built			
Drawing Title	Woolston Station (1131) to Bursledon (1132)			

FTN/GSM-R Project
Tournament House
Paddington
London
W2 1HA

Alternative Reference: See Layout Tab 841 x 297 Sheet 4

Drawing Number: NTPO\SLD\1131\1132\001

Sheet: 7 of 7

Revision: B