

Legend

	Cabinet and Verts		Copper Joint		Trough Duct Cable Tray		Signal Box		FTN Core Node		Screen Joint Routeworks		Manhole details: Cross-To be used Filled-In use Clear-Empty		Overbridge		Signal		Engineer's Line Reference
	Cabinet with Regenerator and Verts		Fibre Joint		Electrical Control Room		Manhole		Core Node with GSM-R Colocated		Copper Joint Routeworks		Mid Length Sheath Gap Fibre		Underbridge		Vehicle Access Point		Mile Post
	KEY: Proposed Fibre & Civils Elements are shown in RED		Screening Conductor Joint with/without Earth		Manhole		FTN Access Node		FTN Access Node with GSM-R Colocated		Cabinet Routeworks		Sheath Gap Copper		Earth Form		Pedestrian Access Point		Platform
	KEY: Proposed Copper Elements are shown in BLUE		Cable - Type Identified by FTN Code Status - as per Key Below		Manhole		FTN Access Node		FTN Access Node with GSM-R Colocated		Fibre Joint Routeworks		Tunnel		Buffer Stop		Telephone		Crossing
	KEY: Proposed Screening Elements are shown in MAGENTA		Cable - Type Identified by FTN Code Status - as per Key Below		Manhole		FTN Access Node		FTN Access Node with GSM-R Colocated		Cable Pull		Gas Line		Sewer		Telecoms		Water
	KEY: All Recoveries are shown in GREEN		Cable - Type Identified by FTN Code Status - as per Key Below		Manhole		FTN Access Node		FTN Access Node with GSM-R Colocated		Cable Pull		Gas Line		Sewer		Telecoms		Water

Notes

Contractor(s)

ndc consultants
Unit 4 Apex Park, Watlington Road, Worcester, Worcestershire, WR4 9FN. Tel: 01905 756000

Status

As-Built

Scale(s)

ELR & Mileage
RDG1

Designed	Sign.	Date
Drawn	Sign.	Date
Checked	Sign.	Date
Approved	Sign.	Date

Project

FTN/GSM-R Project
Stage 2 As-Built

Drawing Title

Staines Station (2126) to
Egham (2391)

Network Rail

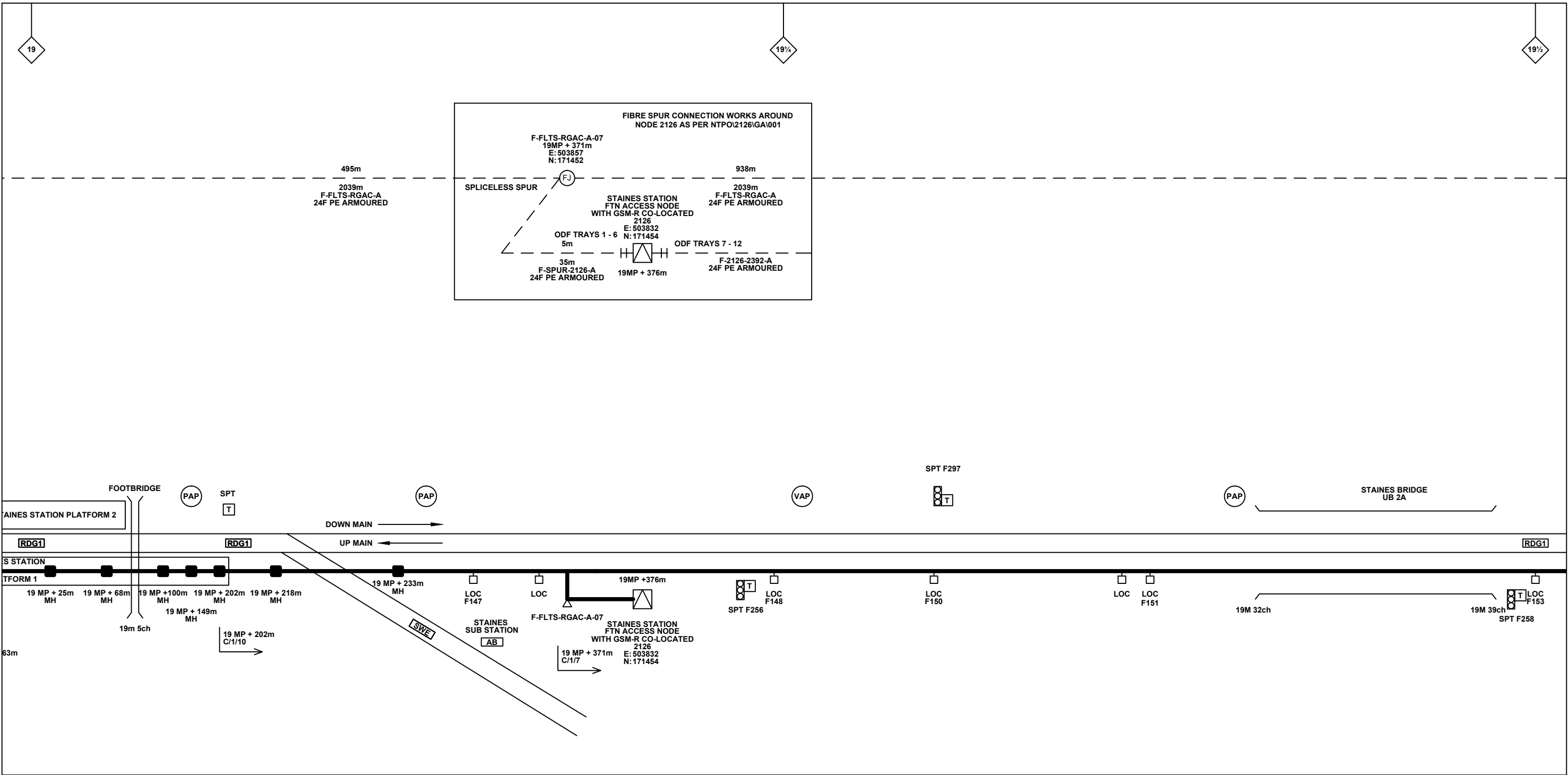
FTN/GSM-R Project
Tournament House
Passington
London
W12 1HA

Alternative Reference
See Layout Tab A3 Sheets 3 and 4

Drawing Number
NTPO\SLD\2126\2391\001

Sheet
2 of 2

Revision
A



Legend

Cabinet and Verts	Copper Joint	Trough Duct Cable Tray	Signal Box	FTN Core Node	Screen Joint Routeworks	Overbridge	Signal	Engineer's Line Reference	Crossing	Gas Line
Cabinet with Regenerator and Verts	Fibre Joint	Cable - Type Identified by FTN Code	Electrical Control Room	Core Node with GSM-R Colocated	Copper Joint Routeworks	Underbridge	Vehicle Access Point	Mile Post	HV Cable	LV Cable
KEY Proposed Fibre & Civils Elements are shown in RED Proposed Copper Elements are shown in BLUE Proposed Screening Elements are shown in MAGENTA All Recoveries are shown in GREEN	Screening Conductor Joint with/without Earth	Manhole	Mid Length Sheath Gap Fibre	FTN Access Node	Cabinet Routeworks	Tunnel	Pedestrian Access Point	Platform	Sewer	Telecoms
All Existing Elements are shown in BLACK	Existing Fibre Cable	Manhole	Sheath Gap Copper	FTN Access Node with GSM-R Colocated	Fibre Joint Routeworks	Earth Farm	Buffer Stop	Telephone	Water	Mast

Notes

Rev	Date	Description of Revisions	Drawn	Chkd	Appr
A	07/09/12	Stage 2 As-Built (redrafted from NTPOSLD2126FLTS001AB1.dwg and NTPOSLD21262391001AB1.dwg)	DH	RM	CT

Contractor(s)

ndc consultants
Unit 4 Apex Park, Wainwright Road, Worcester, Worcestershire, WR4 9FN. Tel: 01905 756000

Status: **As-Built**

Scale(s): NTS, ELR & Mileage RDG1

Designed		Sign.		Date	
Drawn	David Hindle	Sign.	<i>D. Hindle</i>	Date	09/09/2012
Checked	Richard Mansfield	Sign.	<i>R Mansfield</i>	Date	09/09/2012
Approved	Chris Tappenden	Sign.	<i>C Tappenden</i>	Date	09/09/2012
Project	FTN/GSM-R Project Stage 2 As-Built				
Drawing Title	Staines Station (2126) to Egham (2391)				

Network Rail

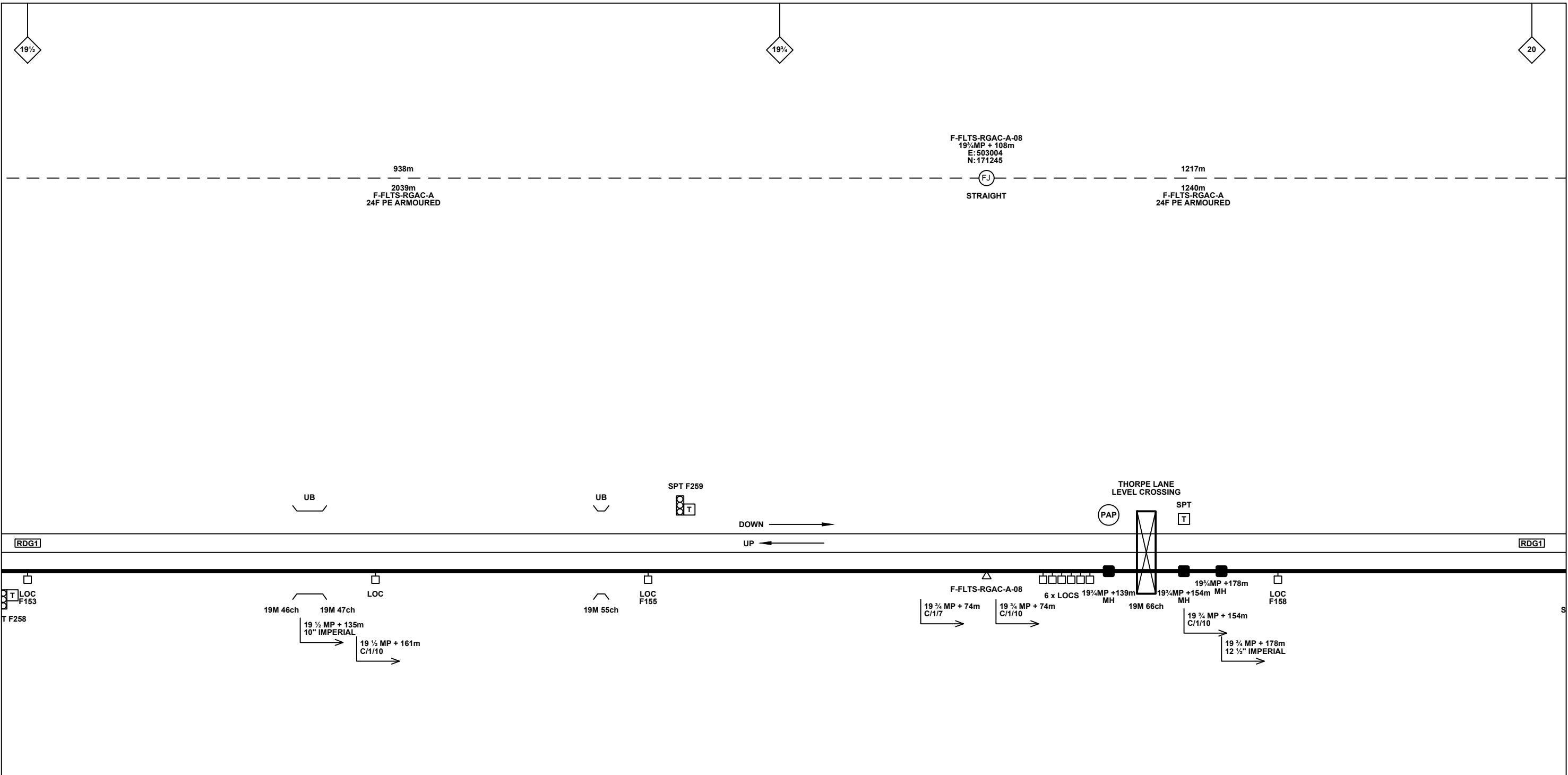
FTN/GSM-R Project
Tournament House
Paddington
London
W2 1HA

Alternative Reference: See Layout Tab 841 x 297 Sheet 1

Drawing Number: NTPO\SLD\2126\2391\001

Sheet: 1 of 4

Revision: A



Legend

Cabinet and Verts	Copper Joint	Trough Duct Cable Tray	Signal Box	FTN Core Node	Screen Joint Routeworks	Overbridge	Signal	Engineer's Line Reference	Crossing	Gas Line
Cabinet with Regenerator and Verts	Fibre Joint	Cable - Type Identified by FTN Code	Electrical Control Room	Core Node with GSM-R Colocated	Copper Joint Routeworks	Underbridge	Vehicle Access Point	Mile Post	Gantry	HV Cable
KEY Proposed Fibre & Civils Elements are shown in RED Proposed Copper Elements are shown in BLUE Proposed Screening Elements are shown in MAGENTA All Recoveries are shown in GREEN	Screening Conductor Joint with/without Earth	Status - as per Key Below	Manhole	FTN Access Node	Cabinet Routeworks	Manhole details: Cross-To be used, Filled-In use, Clear-Empty	Pedestrian Access Point	Platform	Sewer	LV Cable
	Existing Fibre Cable	Existing Copper Cable	Mid Length Sheath Gap Fibre	FTN Access Node with GSM-R Colocated	Fibre Joint Routeworks	Tunnel	Earth Farm	Telephone	Water	Mast
	Existing Screen Cable		Sheath Gap Copper				Buffer Stop	Cable Pull		

Notes

Rev	Date	Description of Revisions	Drawn	Chkd	Appr
A	07/09/12	Stage 2 As-Built (redrafted from NTPOSLD2126FLTS001AB1.dwg and NTPOSLD21262391001AB1.dwg)	DH	RM	CT

Contractor(s)

Unit 4 Apex Park, Wainwright Road, Worcester, Worcestershire, WR4 9FN. Tel: 01905 756000

Status: **As-Built**

Scale(s): NTS (NTS), ELR & Mileage (RDG1)

Designed	David Hindle	Sign.	<i>D. Hindle</i>	Date	09/09/2012
Checked	Richard Mansfield	Sign.	<i>R Mansfield</i>	Date	09/09/2012
Approved	Chris Tappenden	Sign.	<i>C Tappenden</i>	Date	09/09/2012
Project	FTN/GSM-R Project Stage 2 As-Built				
Drawing Title	Staines Station (2126) to Egham (2391)				

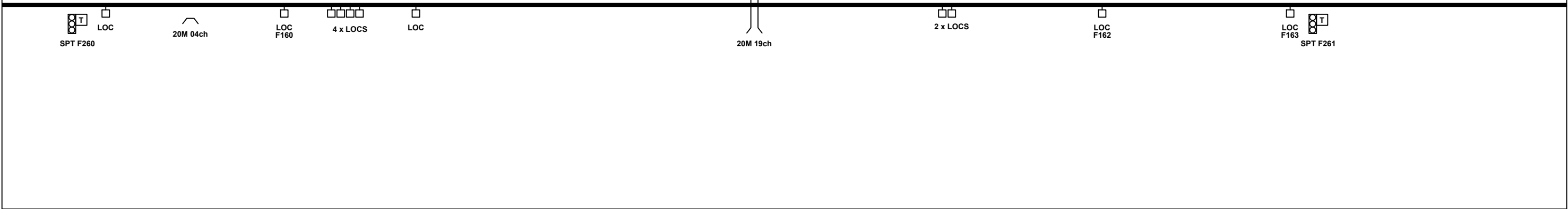
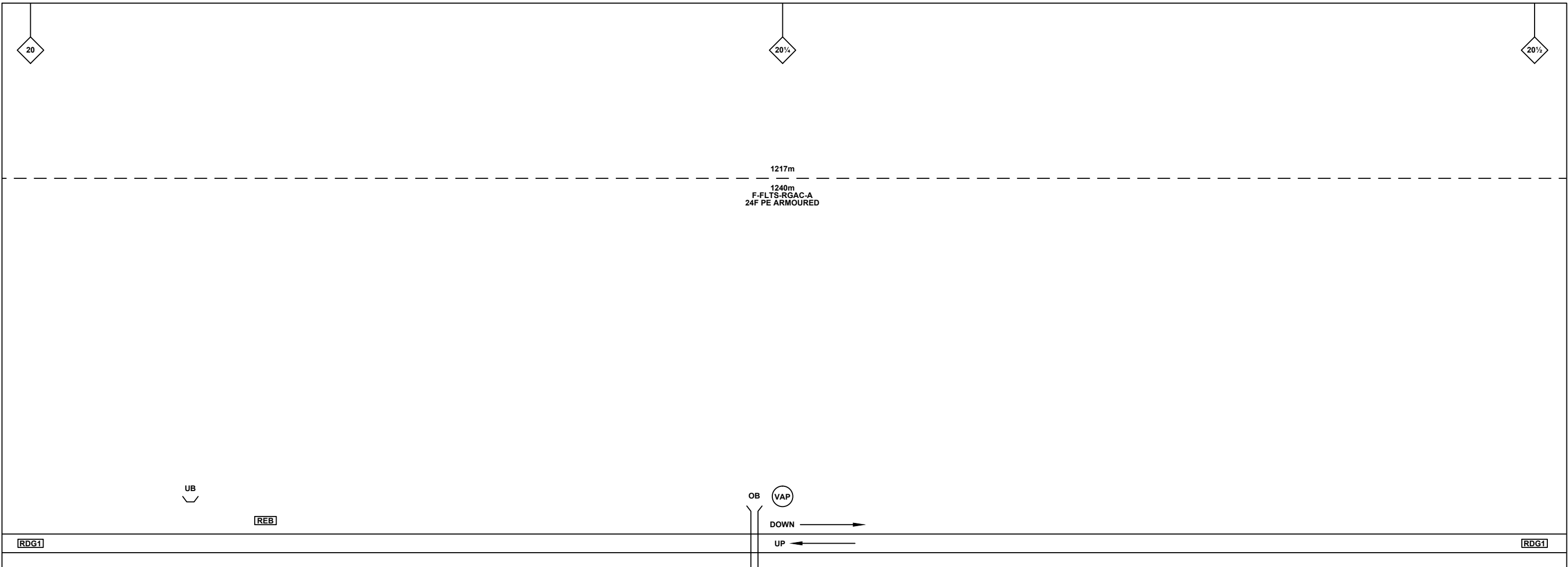
FTN/GSM-R Project
Tournament House
Paddington
London
W2 1HA

Alternative Reference: See Layout Tab 841 x 297 Sheet 1

Drawing Number: NTPO\SLD\2126\2391\001

Sheet: 2 of 4

Revision: A



KEY
 Proposed Fibre & Civils Elements are shown in RED
 Proposed Copper Elements are shown in BLUE
 Proposed Screening Elements are shown in MAGENTA
 All Recoveries are shown in GREEN

All Existing Elements are shown in BLACK
 Existing Fibre Cable
 Existing Copper Cable
 Existing Screen Cable

Rev	Date	Description of Revisions	Drawn	Chkd	Appr
A	07/09/12	Stage 2 As-Built (redrafted from NTPOSLD2126FLTS001AB1.dwg and NTPOSLD21262391001AB1.dwg)	DH	RM	CT

Contractor(s)

ndc consultants
 Unit 4 Apex Park, Wainwright Road, Worcester, Worcestershire, WR4 9FN. Tel: 01905 756000

Status: **As-Built**

Scale(s): NTS

ELR & Mileage: RDG1

Designated	Sign.	Date
Drawn	David Hindle	09/09/2012
Checked	Richard Mansfield	09/09/2012
Approved	Chris Tappenden	09/09/2012

Project: **FTN/GSM-R Project Stage 2 As-Built**

Drawing Title: **Staines Station (2126) to Egham (2391)**

Network Rail

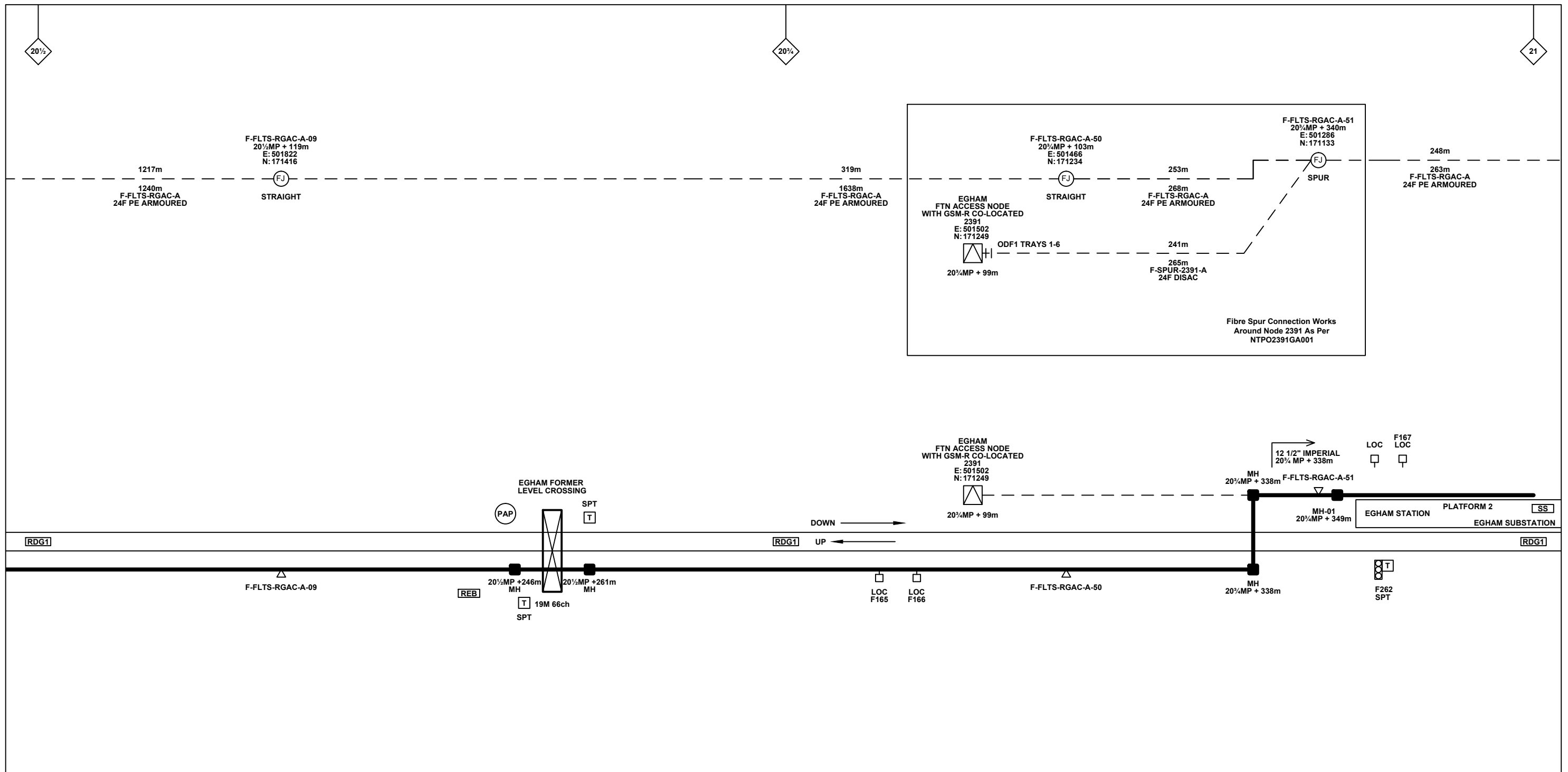
FTN/GSM-R Project
 Tournament House
 Paddington
 London
 W2 1HA

Alternative Reference: See Layout Tab 841 x 297 Sheet 2

Drawing Number: **NTPO\SLD\2126\2391\001**

Sheet: **3 of 4**

Revision: **A**



Legend

Cabinet and Verts	Copper Joint	Trough Duct Cable Tray	Signal Box	FTN Core Node	Screen Joint Routeworks	Overbridge	Signal	Engineer's Line Reference	Crossing	Gas Line
Cabinet with Regenerator and Verts	Fibre Joint	Cable - Type Identified by FTN Code	Electrical Control Room	Core Node with GSM-R Colocated	Copper Joint Routeworks	Manhole	Vehicle Access Point	Mile Post	Gantry	HV Cable
KEY Proposed Fibre & Civils Elements are shown in RED Proposed Copper Elements are shown in BLUE Proposed Screening Elements are shown in MAGENTA All Recoveries are shown in GREEN	Screening Conductor Joint with/without Earth	Status - as per Key Below	Mid Length Sheath Gap Fibre	FTN Access Node	Cabinet Routeworks	Manhole details: Cross-To be used, Filled-In use, Clear-Empty	Pedestrian Access Point	Platform	Sewer	LV Cable
	Existing Fibre Cable	Existing Copper Cable	Sheath Gap Copper	FTN Access Node with GSM-R Colocated	Fibre Joint Routeworks	Tunnel	Earth Farm	Buffer Stop	Telephone	Water
	Existing Screen Cable								Copper Blue Fibre Red Screen Green	Mast

Contractor(s)			Designed			Sign.			Date		
 Unit 4 Apex Park, Wainwright Road, Worcester, Worcestershire, WR4 9FN. Tel: 01905 756000			Drawn	David Hindle	Sign.	<i>D. Hindle</i>	Date	09/09/2012			
			Checked	Richard Mansfield	Sign.	<i>R Mansfield</i>	Date	09/09/2012			
			Approved	Chris Tappenden	Sign.	<i>Chris Tappenden</i>	Date	09/09/2012			
			Project	FTN/GSM-R Project Stage 2 As-Built						FTN/GSM-R Project Tournament House Paddington London W2 1HA	
Status			Drawing Title			Alternative Reference			Sheet		
As-Built			Staines Station (2126) to Egham (2391)			See Layout Tab 841 x 297 Sheet 2			4 of 4		
Scale(s)			Drawing Number			Revision					
NTS			NTPO\SLD\2126\2391\001			A					
Rev	Date	Description of Revisions	Drawn	Chkd	Appr						