

Legend

	Cabinet and Verts		Copper Joint		Trough Duct Cable Tray		Signal Box		FTN Core Node		Screen Joint Routeworks		Manhole details: Cross - To be used Filled - In use Clear - Empty		Overbridge		Signal		Engineer's Line Reference		Crossing		Gas Line		HV Cable		LV Cable		Sewer		Telecoms		Water		Copper Blue		Fibre Red		Screen Green		AC Stanchion
	Cabinet with Regenerator and Verts		Fibre Joint		Electrical Control Room		Manhole		Core Node with GSM-R Colocated		Copper Joint Routeworks		Manhole details: Cross - To be used Filled - In use Clear - Empty		Underbridge		Vehicle Access Point		Mile Post		Gantry		Gas		HV Cable		LV Cable		Sewer		Telecoms		Water		Copper Blue		Fibre Red		Screen Green		AC Stanchion
	Screening Conductor Joint with/without Earth		Cable - Type Identified by FTN Code Status - as per Key Below		Manhole		Mid Length Sheath Gap Fibre		FTN Access Node		Cabinet Routeworks		Manhole details: Cross - To be used Filled - In use Clear - Empty		Tunnel		Pedestrian Access Point		Platform		Cable Pull		Gas		HV Cable		LV Cable		Sewer		Telecoms		Water		Copper Blue		Fibre Red		Screen Green		AC Stanchion
	Existing Fibre Cable		Existing Copper Cable		Existing Screen Cable		Manhole		FTN Access Node with GSM-R Colocated		Fibre Joint Routeworks		Manhole details: Cross - To be used Filled - In use Clear - Empty		Earth Farm		Buffer Stop		Telephone		Cable Pull		Gas		HV Cable		LV Cable		Sewer		Telecoms		Water		Copper Blue		Fibre Red		Screen Green		AC Stanchion

KEY

- Proposed Fibre & Civils Elements are shown in RED
- Proposed Copper Elements are shown in BLUE
- Proposed Screening Elements are shown in MAGENTA
- All Recoveries are shown in GREEN

Notes

ndcconsultants
Unit 4 Apex Park, Wainwright Road, Worcester, Worcestershire, WR4 9FN. Tel: 01905 756000

Design
EYD & BML1

Drawn	Dominique Andres	Sign.		Date	15/12/2010
Checked	Joe Winter	Sign.		Date	15/12/2010
Approved	Chris Tappenden	Sign.		Date	15/12/2010

FTN / GSM-R Project Stage 2 Design

St Denys (1130) to Eastleigh ECR (ETLS)

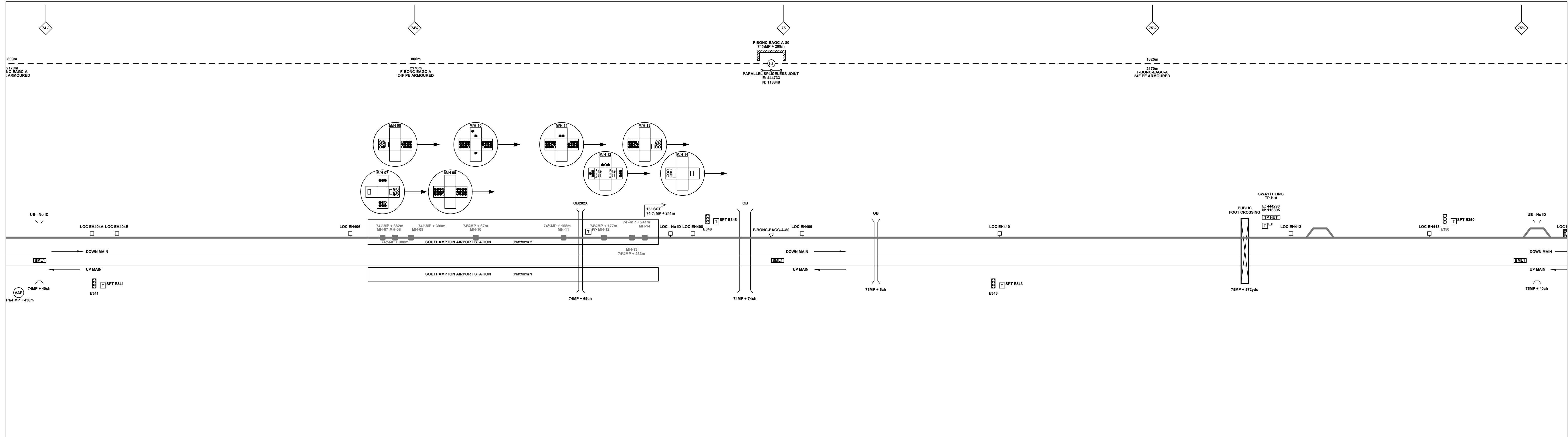
Network Rail

FTN/GSM-R Project
Tournament House
Paddington
London
W2 1HA

Alternative Reference: See Layout Tab A3 Sheets 1 and 2

Drawing Number: NTPO\SLD\1130\ETLS\001

Sheet 1 of 4
Revision A



Legend

Cabinet and Verts	Copper Joint	Trough Duct Cable Tray	Signal Box	FTN Core Node	Screen Joint Routeworks	Manhole details: Cross - To be used Filled - In use Clear - Empty	Overbridge	Signal	Engineer's Line Reference	Gas Line
Cabinet with Regenerator and Verts	Fibre Joint	Cable - Type Identified by FTN Code	Electrical Control Room	Core Node with GSM-R Colocated	Copper Joint Routeworks	Tunnel	Underbridge	VAP Access Point	Mile Post	HV Cable
KEY: Proposed Fibre & Civils Elements are shown in RED	2034m F-DIDC-RGAC-A	Manhole	Mid Length Sheath Gap Fibre	FTN Access Node	Cabinet Routeworks	Earth Farm	Buffer Stop	PVP Access Point	Platform	LV Cable
KEY: Proposed Copper Elements are shown in BLUE	Existing Fibre Cable	Sheath Gap Copper	FTN Access Node with GSM-R Colocated	Fibre Joint Routeworks	Telephone	Copper Blue Fibre Red Screen Green	AC Stanchion	Water	Sewer	
KEY: Proposed Screening Elements are shown in MAGENTA	Existing Copper Cable								Telecoms	
KEY: All Recoveries are shown in GREEN	Existing Screen Cable								Water	

Notes

ndcconsultants
Unit 4 Apex Park, Wainwright Road, Worcester, Worcestershire, WR4 9FN. Tel: 01905 756000

Status: Design

Scale(s): EYD & BML1

Designed	Sign.	Date
Drawn	Sign.	Date
Checked	Sign.	Date
Approved	Sign.	Date

FTN / GSM-R Project Stage 2 Design

St Denys (1130) to Eastleigh ECR (ETLS)

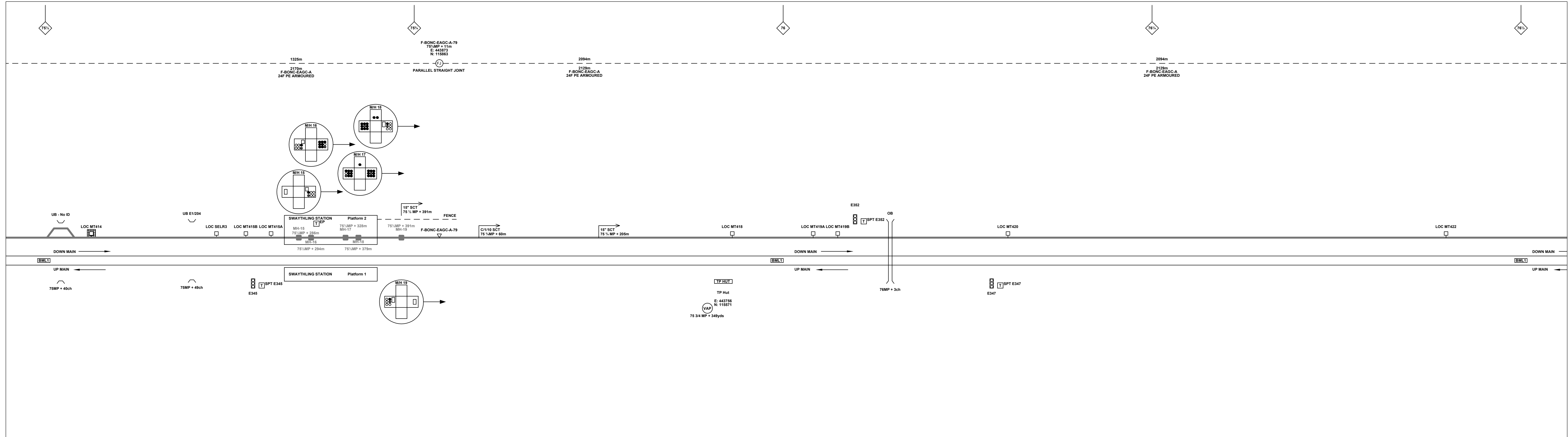
Network Rail

FTN/GSM-R Project
Tournament House
Parrington
London
W2 1HA

Alternative Reference: See Layout Tab A3 Sheets 3 and 4

Drawing Number: NTPO\SLD\1130\ETLS\001

Sheet 2 of 4
Revision A



Legend

Cabinet and Verts	Copper Joint	Trough Duct Cable Tray	Signal Box	FTN Core Node	Screen Joint Routeworks	Manhole	Overbridge	Signal	MLNT	Engineer's Line Reference	Crossing	Gas Line
Cabinet with Regenerator and Verts	Fibre Joint	Cable - Type Identified by FTN Code	Electrical Control Room	Core Node with GSM-R Colocated	Copper Joint Routeworks	Mid Length Sheath Gap Fibre	Underbridge	Vehicle Access Point	Mile Post	Gantry	GAS	HV Cable
Screening Conductor Joint with/without Earth	Manhole	Status - as per Key Below	FTN Access Node	Cabinet Routeworks	Fibre Joint Routeworks	Sheath Gap Copper	Earth Farm	Pedestrian Access Point	Platform	Cable Pull	LV Cable	Sewer
KEY		Manhole details:	FTN Access Node with GSM-R Colocated	Buffer Stop	Telephone	Existing Fibre Cable	Tunnel	Filled-In use	AC Stanchion	Water	Clear-Empty	Telecoms
Proposed Fibre & Civils Elements are shown in RED	All Existing Elements are shown in BLACK	Cross-To be used	FTN Access Node with GSM-R Colocated	Telephone	Copper Blue Fibre	Existing Copper Cable	Clear-Empty	Screen Green		Water	Clear-Empty	Water
Proposed Copper Elements are shown in BLUE	Existing Fibre Cable	Clear-Empty	FTN Access Node with GSM-R Colocated			Existing Screen Cable						
Proposed Screening Elements are shown in MAGENTA	Existing Copper Cable											
All Recoveries are shown in GREEN	Existing Screen Cable											

Notes

ndcconsultants
 Unit 4 Apex Park, Wainwright Road, Worcester, Worcestershire, WR4 9FN. Tel: 01905 756000

Status: **Design**

Scale(s): EYD & BML1

Contractor(s): NTS

Designed	Sign.	Date
Drawn	Sign.	Date
Checked	Sign.	Date
Approved	Sign.	Date

Project: FTN / GSM-R Project
 Stage 2 Design

Drawing Title: St Denys (1130) to Eastleigh ECR (ETLS)

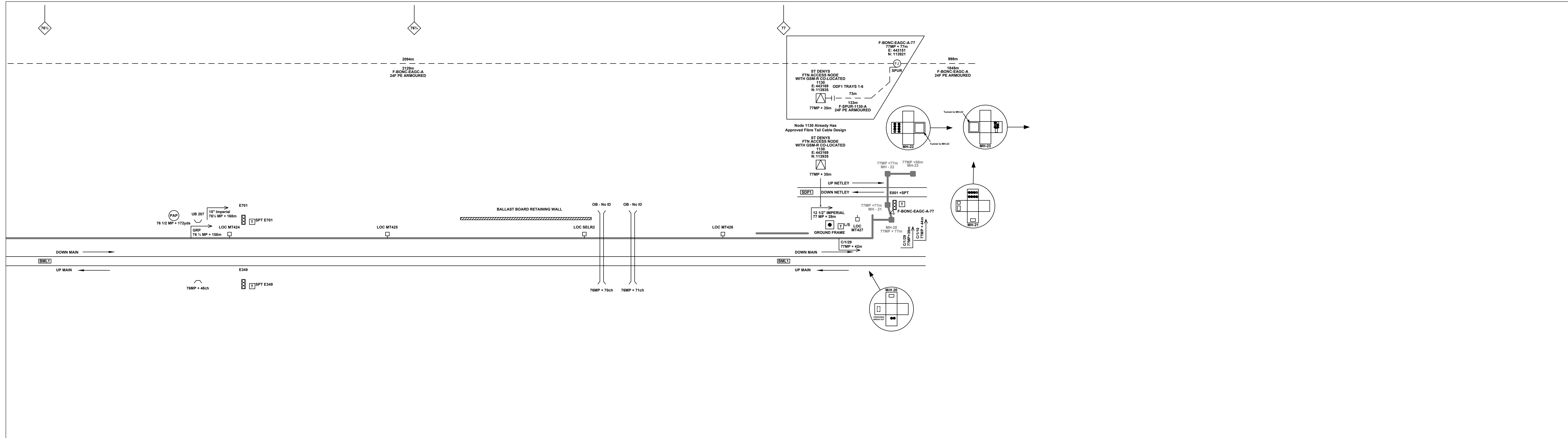
Network Rail

FTN/GSM-R Project
 Tournament House
 Paddington
 London
 W2 1HA

Alternative Reference: See Layout Tab A3 Sheets 5 and 6

Drawing Number: NTPO\SLD\1130\ETLS\001

Sheet: 3 of 4
 Revision: A



Legend

Cabinet and Verts	Copper Joint	Trough Duct Cable Tray	Signal Box	FTN Core Node	Screen Joint Routeworks	Manhole details: Cross-To be used	Overbridge	Signal	Engineer's Line Reference	Crossing	Gas Line
Cabinet with Regenerator and Verts	Fibre Joint	Cable - Type Identified by FTN Code	Electrical Control Room	Core Node with GSM-R Colocated	Copper Joint Routeworks	Manhole details: Filled-In use	Underbridge	Vehicle Access Point	Mile Post	Gantry	HV Cable
Cabinet with Regenerator and Verts	Screening Conductor Joint with/without Earth	Cable - Status as per Key Below	Manhole	FTN Access Node	Cabinet Routeworks	Manhole details: Clear-Empty	Tunnel	Pedestrian Access Point	Platform	Sewer	LV Cable
KEY		Existing Fibre Cable	Mid Length Sheath Gap Fibre	FTN Access Node with GSM-R Colocated	Fibre Joint Routeworks	Earth Farm	Buffer Stop	Telephone	Cable Pull	Copper Blue Fibre	Water
Existing Copper Cable		Existing Screen Cable	Sheath Gap Copper			AC Stanchion			Fibre Red	Screen Green	
All Recoveries											

Notes

ndcconsultants
Unit 4 Apex Park, Wainwright Road, Worcester, Worcestershire, WR4 9FN. Tel: 01905 756000

Status: **Design**

Scale(s): ELR & Mileage
EYD & BML1

Designed	Sign.	Date
Drawn	Sign.	Date
Checked	Sign.	Date
Approved	Sign.	Date

Project: **FTN / GSM-R Project Stage 2 Design**

Drawing Title: **St Denys (1130) to Eastleigh ECR (ETLS)**

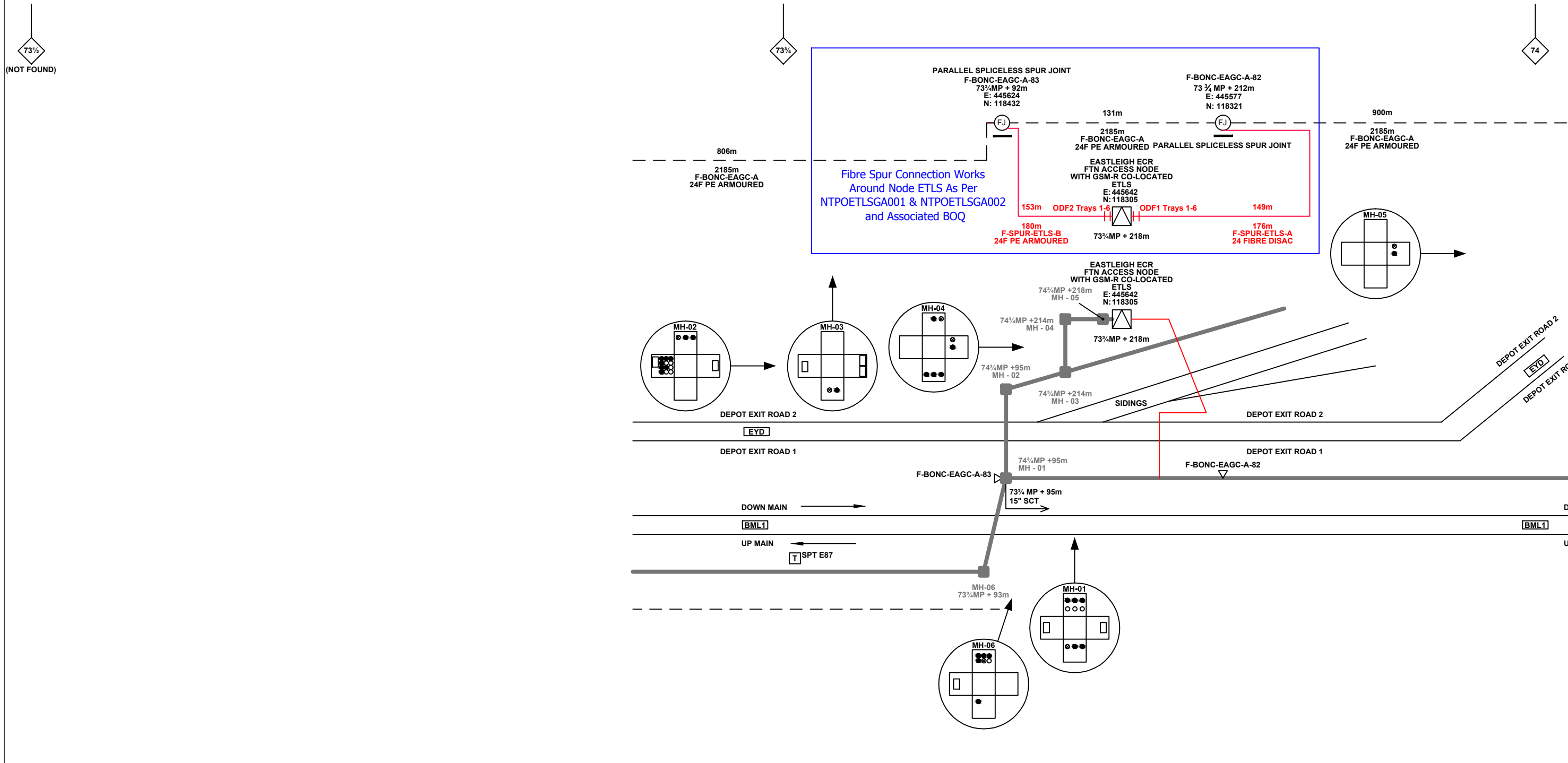
Network Rail

FTN/GSM-R Project
Tournament House
Paddington
London
W2 1HA

Alternative Reference: See Layout Tab A3 Sheets 7 and 8

Drawing Number: **NTPO\SLD\1130\ETLS\001**

Sheet: **4** of **4**
Revision: **A**



Legend

Cabinet and Verts	Copper Joint	Trough Duct Cable Tray	Signal Box	FTN Core Node	Screen Joint Routeworks	Overbridge	Signal	Engineer's Line Reference	Crossing	GAS — GAS — Gas Line
Cabinet with Regenerator and Verts	Fibre Joint	Cable - Type Identified by FTN Code	Electrical Control Room	Core Node with GSM-R Colocated	Copper Joint Routeworks	Underbridge	VAP	Mile Post	Gantry	HV — HV — HV Cable
KEY	Screening Conductor Joint with/without Earth	Manhole	Mid Length Sheath Gap Fibre	FTN Access Node	Cabinet Routeworks	Tunnel	PAP	Platform	SEW — SEW — Sewer	LV — LV — LV Cable
Proposed Fibre & Civils Elements are shown in RED				FTN Access Node with GSM-R Colocated	Fibre Joint Routeworks	Earth Farm	Buffer Stop	Telephone	TEL — TEL — Telecoms	W — W — Water
Proposed Copper Elements are shown in BLUE									Cable Pull	AC Stanchion
Proposed Screening Elements are shown in MAGENTA										
All Recoveries are shown in GREEN										
All Existing Elements are shown in BLACK										
Existing Fibre Cable										
Existing Copper Cable										
Existing Screen Cable										

Notes

Contractor(s)	ndc consultants			
Status	Design			
Scale(s)	NTS			
ELR & Mileage	EYD & BML1			
Redrafted from	NTPOS\SLD\1130\EAGC001A.dwg	DA	JW	CT
Rev	Date	Description of Revisions	Drawn	Chkd
A	15/12/10			

Designed	Sign.	Date
Drawn	Sign. <i>D. Andres</i>	Date 15/12/2010
Checked	Sign. <i>[Signature]</i>	Date 15/12/2010
Approved	Sign. <i>[Signature]</i>	Date 15/12/2010
Project		
FTN / GSM-R Project Stage 2 Design		
Drawing Title		
St Denys (1130) to Eastleigh ECR (ETLS)		

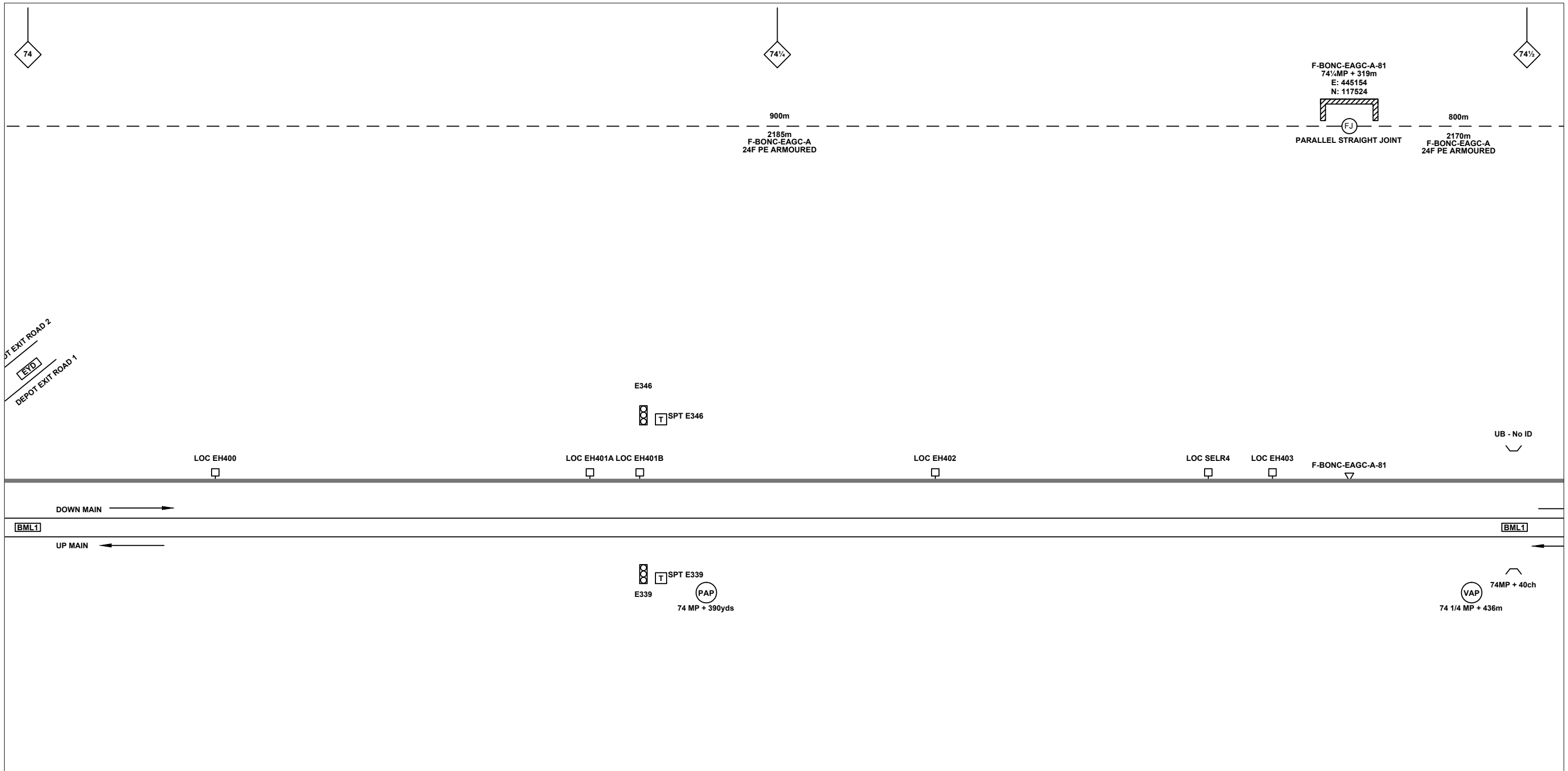
FTN/GSM-R Project
Tournament House
Farringdon
London
W2 1HA

Alternative Reference: See Layout Tab 841 x 297 Sheet 1

Sheet 1 of 8

Drawing Number: NTPOS\SLD\1130\ETLS\001

Revision: A



Legend

Cabinet and Verts	Copper Joint	Trough Duct Cable Tray	Signal Box	FTN Core Node	Screen Joint Routeworks	Overbridge	Signal	Engineer's Line Reference	Crossing	GAS — GAS — Gas Line
Cabinet with Regenerator and Verts	Fibre Joint	Cable - Type Identified by FTN Code	Electrical Control Room	Core Node with GSM-R Colocated	Copper Joint Routeworks	Underbridge	Vehicle Access Point	Mile Post	Gantry	HV — HV — HV Cable
KEY	Screening Conductor Joint with/without Earth	Manhole	Mid Length Sheath Gap Fibre	FTN Access Node	Cabinet Routeworks	Manhole details: Cross-To be used, Filled-In use, Clear-Empty	Pedestrian Access Point	Platform	SEW — SEW — Sewer	TEL — TEL — Telecoms
Proposed Fibre & Civils Elements are shown in RED						Tunnel		Earth Farm	W — W — Water	
Proposed Copper Elements are shown in BLUE								Buffer Stop	Cable Pull	AC Stanchion
Proposed Screening Elements are shown in MAGENTA								Telephone		
All Recoveries are shown in GREEN										
All Existing Elements are shown in BLACK										
Existing Fibre Cable										
Existing Copper Cable										
Existing Screen Cable										

Notes

Rev	Date	Description of Revisions	Drawn	Chkd	Appr
A	15/12/10	Redrafted from NTPOSLD1130EAGC001A.dwg	DA	JW	CT

Contractor(s)

Unit 4 Apex Park, Wainwright Road, Worcester, Worcestershire, WR4 9FN. Tel: 01905 756000

Status: **Design**

Scale(s): NTS

ELR & Mileage: EYD & BML1

Designed	Sign.	Date
Drawn	Sign. <i>D. Andres</i>	Date 15/12/2010
Checked	Sign. <i>[Signature]</i>	Date 15/12/2010
Approved	Sign. <i>[Signature]</i>	Date 15/12/2010
Project: FTN / GSM-R Project Stage 2 Design		
Drawing Title: St Denys (1130) to Eastleigh ECR (ETLS)		

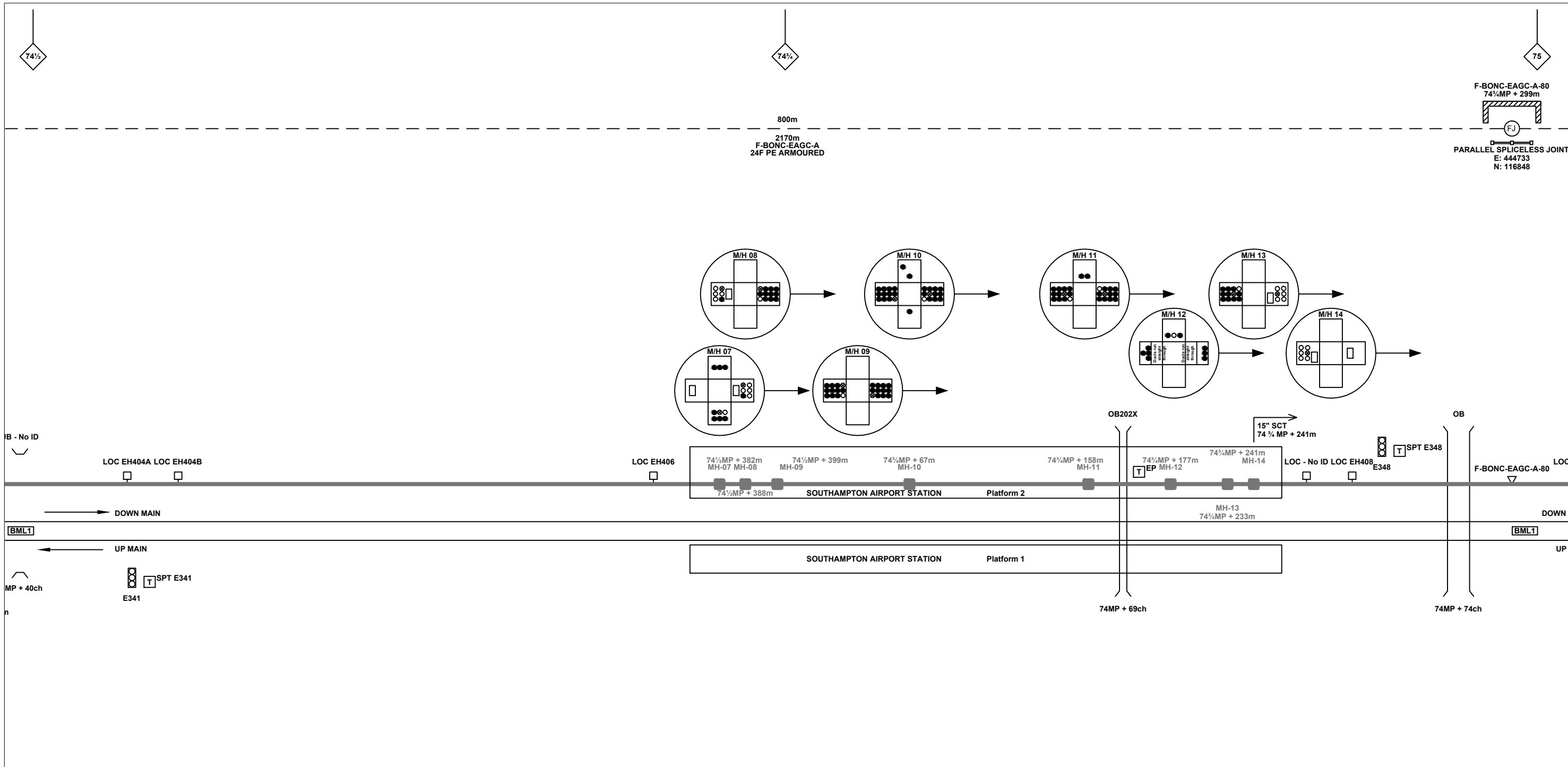
FTN/GSM-R Project
Tournament House
Paddington
London
W2 1HA

Alternative Reference: See Layout Tab 841 x 297 Sheet 1

Sheet: 2 of 8

Drawing Number: NTPO\SLD\1130\ETLS\001

Revision: A



Legend

Cabinet and Verts	Copper Joint	Trough Duct Cable Tray	Signal Box	FTN Core Node	Screen Joint Routeworks	Overbridge	Signal	Engineer's Line Reference	Crossing	GAS — GAS — Gas Line
Cabinet with Regenerator and Verts	Fibre Joint	Cable - Type Identified by FTN Code	Electrical Control Room	Core Node with GSM-R Colocated	Copper Joint Routeworks	Underbridge	Vehicle Access Point	Mile Post	Gantry	HV — HV — HV Cable
KEY	Screening Conductor Joint with/without Earth	Manhole	Manhole	FTN Access Node	Cabinet Routeworks		Pedestrian Access Point	Platform	— v — v — Water	Cable Pull
Proposed Fibre & Civils Elements are shown in RED		All Existing Elements are shown in BLACK	Mid Length Sheath Gap Fibre	FTN Access Node with GSM-R Colocated	Fibre Joint Routeworks		Earth Farm	Buffer Stop	AC Stanchion	— SEW — SEW — Sewer
Proposed Copper Elements are shown in BLUE		Existing Fibre Cable	Sheath Gap Copper							— TEL — TEL — Telecoms
Proposed Screening Elements are shown in MAGENTA		Existing Copper Cable								
All Recoveries are shown in GREEN		Existing Screen Cable								

Notes

Contractor(s)

Unit 4 Apex Park, Wainwright Road, Worcester, Worcestershire, WR4 9FN. Tel: 01905 756000

Status: **Design**

Scale(s): NTS

ELR & Mileage: EYD & BML1

Designed	Sign.	Date
Drawn	Sign.	Date
Checked	Sign.	Date
Approved	Sign.	Date
Project		
FTN / GSM-R Project Stage 2 Design		
Drawing Title		
St Denys (1130) to Eastleigh ECR (ETLS)		

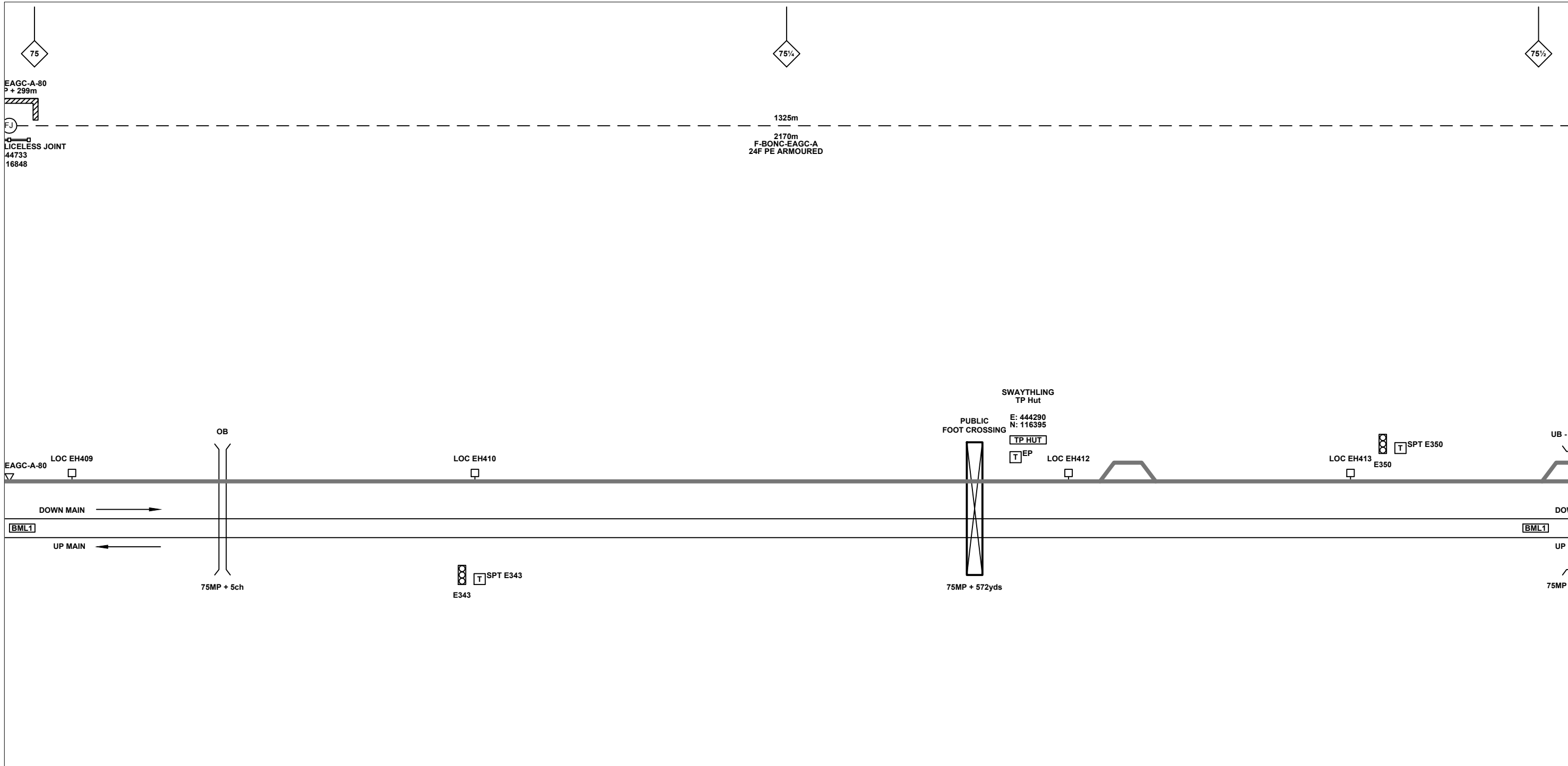
FTN/GSM-R Project
Tournament House
Paddington House
London
W2 1HA

Alternative Reference: See Layout Tab 841 x 297 Sheet 2

Sheet: 3 of 8

Drawing Number: NTPO\SLD\1130\ETLS\001

Revision: A



Legend

Cabinet and Verts	Copper Joint	Trough Duct Cable Tray	Signal Box	FTN Core Node	Screen Joint Routeworks	Overbridge	Signal	Engineer's Line Reference	Crossing	GAS — GAS — Gas Line
Cabinet with Regenerator and Verts	Fibre Joint	Cable - Type Identified by FTN Code	Electrical Control Room	Core Node with GSM-R Colocated	Copper Joint Routeworks	Underbridge	Vehicle Access Point	Mile Post	Gantry	HV — HV — HV Cable
KEY	Screening Conductor Joint with/without Earth	Manhole	Mid Length Sheath Gap Fibre	FTN Access Node	Cabinet Routeworks	Tunnel	Pedestrian Access Point	Platform	— W — W — Water	Cable Pull
Proposed Fibre & Civils Elements are shown in RED										AC Stanchion
Proposed Copper Elements are shown in BLUE										
Proposed Screening Elements are shown in MAGENTA										
All Recoveries are shown in GREEN										
		All Existing Elements are shown in BLACK								
		Existing Fibre Cable								
		Existing Copper Cable								
		Existing Screen Cable								

Rev	Date	Description of Revisions	Drawn	Chkd	Appr
A	15/12/10	Redrafted from NTPOSLD1130EAGC001A.dwg	DA	JW	CT

Contractor(s)

Unit 4 Apex Park, Wainwright Road, Worcester, Worcestershire, WR4 9FN. Tel: 01905 756000

Status: **Design**

Scale(s): NTS

ELR & Mileage: EYD & BML1

Designed	Sign.	Date
Drawn	Sign. <i>D. Andres</i>	Date 15/12/2010
Checked	Sign. <i>[Signature]</i>	Date 15/12/2010
Approved	Sign. <i>[Signature]</i>	Date 15/12/2010
Project: FTN / GSM-R Project Stage 2 Design		
Drawing Title: St Denys (1130) to Eastleigh ECR (ETLS)		

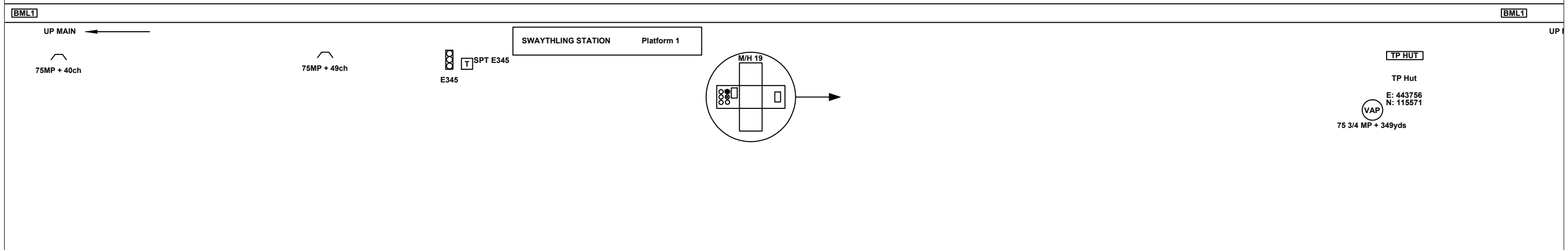
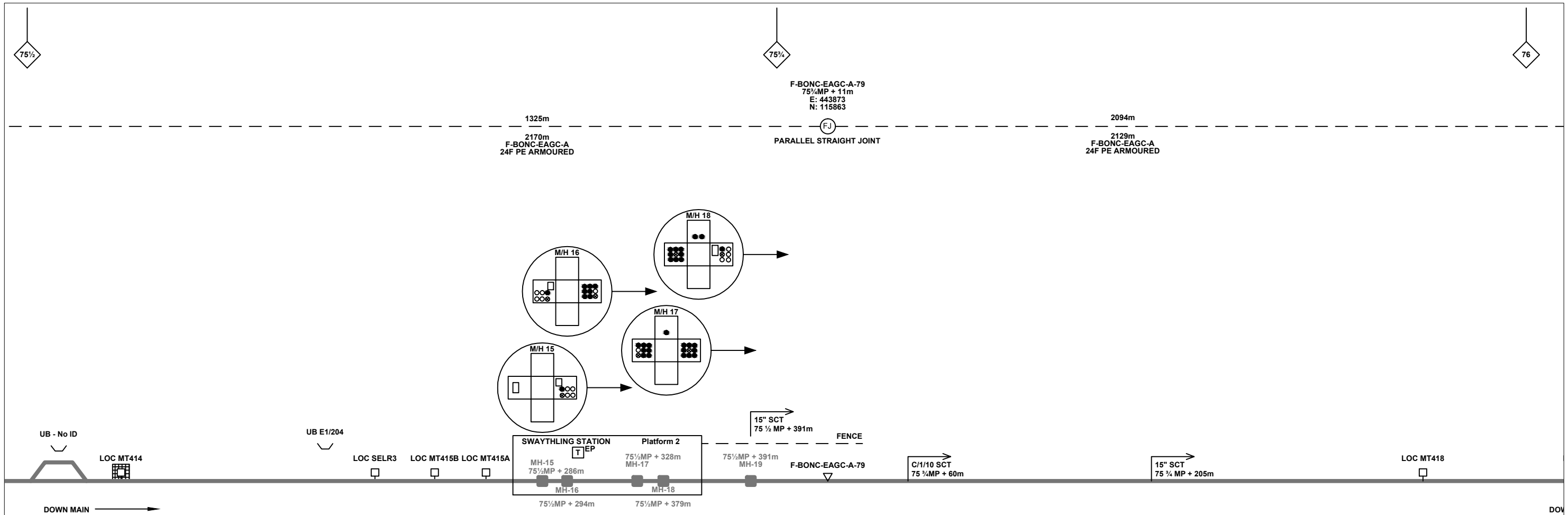
FTN/GSM-R Project
Tournament House
Paddington
London
W2 1HA

Alternative Reference: See Layout Tab 841 x 297 Sheet 2

Drawing Number: NTPO\SLD\1130\ETLS\001

Sheet: 4 of 8

Revision: A



Legend

Cabinet and Verts	Copper Joint	Trough Duct Cable Tray	Signal Box	FTN Core Node	Screen Joint Routeworks	Overbridge	Signal	Engineer's Line Reference	Crossing	GAS — GAS — Gas Line
Cabinet with Regenerator and Verts	Fibre Joint	Cable - Type Identified by FTN Code	Electrical Control Room	Core Node with GSM-R Colocated	Copper Joint Routeworks	Underbridge	Vehicle Access Point	Mile Post	Gantry	HV — HV — HV Cable
KEY	Screening Conductor Joint with/without Earth	Manhole	Manhole	FTN Access Node	Cabinet Routeworks	Manhole details: Cross-To be used, Filled-In use, Clear-Empty	Pedestrian Access Point	Platform	SEW — SEW — Sewer	LV — LV — LV Cable
Proposed Fibre & Civils Elements are shown in RED		All Existing Elements are shown in BLACK	Mid Length Sheath Gap Fibre	FTN Access Node with GSM-R Colocated	Fibre Joint Routeworks	Tunnel	Earth Farm	Telephone	TEL — TEL — Telecoms	W — W — Water
Proposed Copper Elements are shown in BLUE		Existing Fibre Cable	Sheath Gap Copper				Buffer Stop		Cable Pull	AC Stanchion
Proposed Screening Elements are shown in MAGENTA		Existing Copper Cable							Copper Blue	
All Recoveries are shown in GREEN		Existing Screen Cable							Fibre Red	
									Screen Green	

Notes

Contractor(s)

Unit 4 Apex Park, Wainwright Road, Worcester, Worcestershire, WR4 9FN. Tel: 01905 756000

Status: **Design**

Scale(s): NTS

ELR & Mileage: EYD & BML1

Designed	Sign.	Date
Drawn	Sign.	Date
Checked	Sign.	Date
Approved	Sign.	Date
Project		
Drawing Title		

FTN / GSM-R Project
Stage 2 Design

St Denys (1130) to
Eastleigh ECR (ETLS)

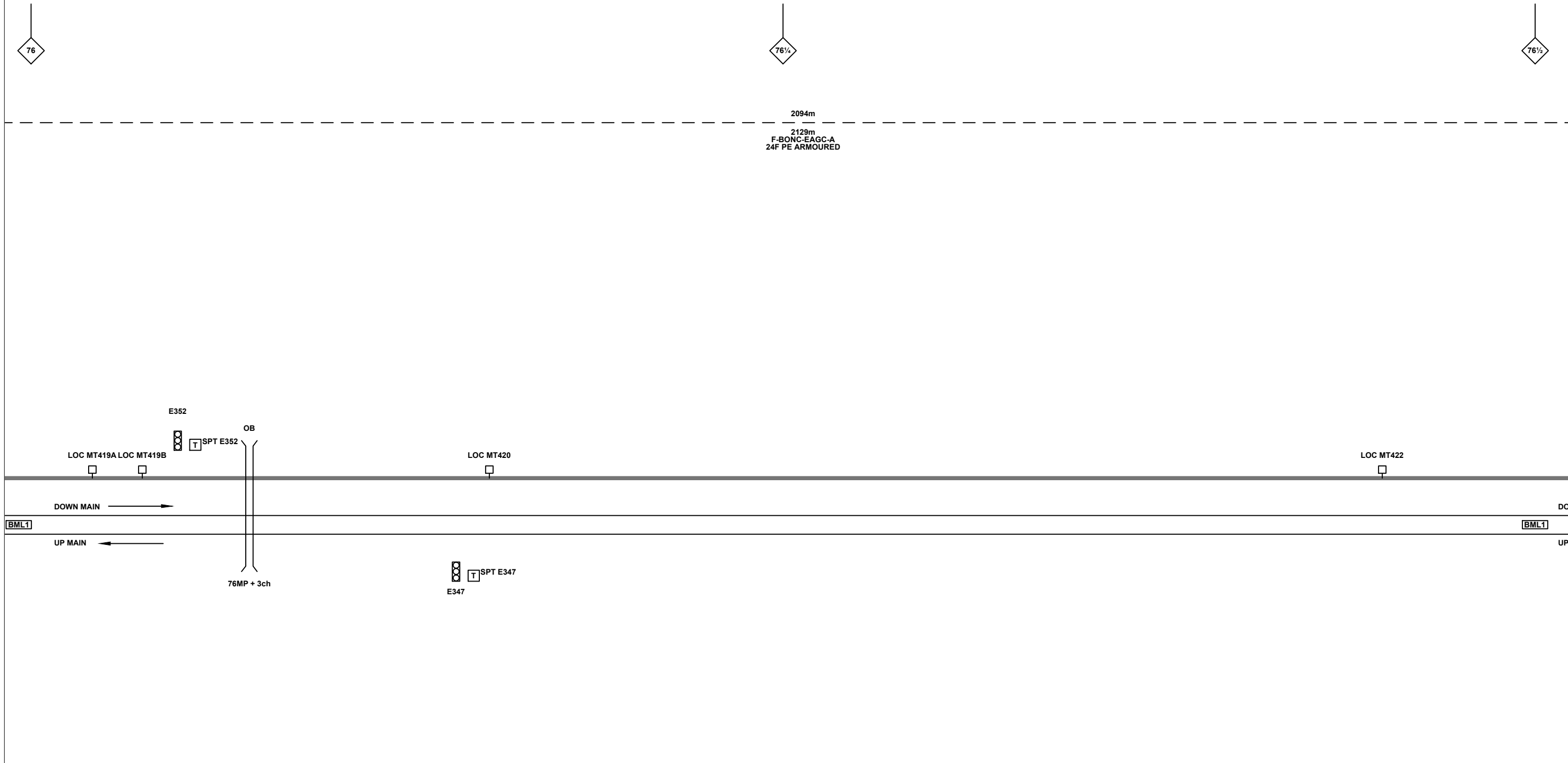
FTN/GSM-R Project
Tournament House
Paddington
London
W2 1HA

Alternative Reference: See Layout Tab 841 x 297 Sheet 3

Drawing Number: NTPO\SLD\1130\ETLS\001

Sheet: 5 of 8

Revision: A



Legend

Cabinet and Verts	Copper Joint	Trough Duct Cable Tray	Signal Box	FTN Core Node	Screen Joint Routeworks	Overbridge	Signal	Engineer's Line Reference	Crossing	GAS — GAS — Gas Line
Cabinet with Regenerator and Verts	Fibre Joint	Cable - Type Identified by FTN Code	Electrical Control Room	Core Node with GSM-R Colocated	Copper Joint Routeworks	Underbridge	Vehicle Access Point	Mile Post	Gantry	HV — HV — HV Cable
KEY	Screening Conductor Joint with/without Earth	Status - as per Key Below	Manhole	FTN Access Node	Cabinet Routeworks	Manhole details: Cross-To be used, Filled-In use, Clear-Empty	Pedestrian Access Point	Platform	SEW — SEW — Sewer	LV — LV — LV Cable
Proposed Fibre & Cables Elements are shown in RED		All Existing Elements are shown in BLACK	Mid Length Sheath Gap Fibre	FTN Access Node with GSM-R Colocated	Fibre Joint Routeworks	Tunnel	Earth Farm	Buffer Stop	TEL — TEL — Telecoms	W — W — Water
Proposed Copper Elements are shown in BLUE		Existing Fibre Cable	Sheath Gap Copper					Telephone	Cable Pull	AC Stanchion
Proposed Screening Elements are shown in MAGENTA		Existing Copper Cable								
All Recoveries are shown in GREEN		Existing Screen Cable								

Notes

Contractor(s)

Unit 4 Apex Park, Wainwright Road, Worcester, Worcestershire, WR4 9FN. Tel: 01905 756000

Status: **Design**

Scale(s): NTS

ELR & Mileage: EYD & BML1

Designed	Sign.	Date
Drawn	Sign. <i>D. Andres</i>	Date 15/12/2010
Checked	Sign. <i>[Signature]</i>	Date 15/12/2010
Approved	Sign. <i>[Signature]</i>	Date 15/12/2010
Project: FTN / GSM-R Project Stage 2 Design		
Drawing Title: St Denys (1130) to Eastleigh ECR (ETLS)		

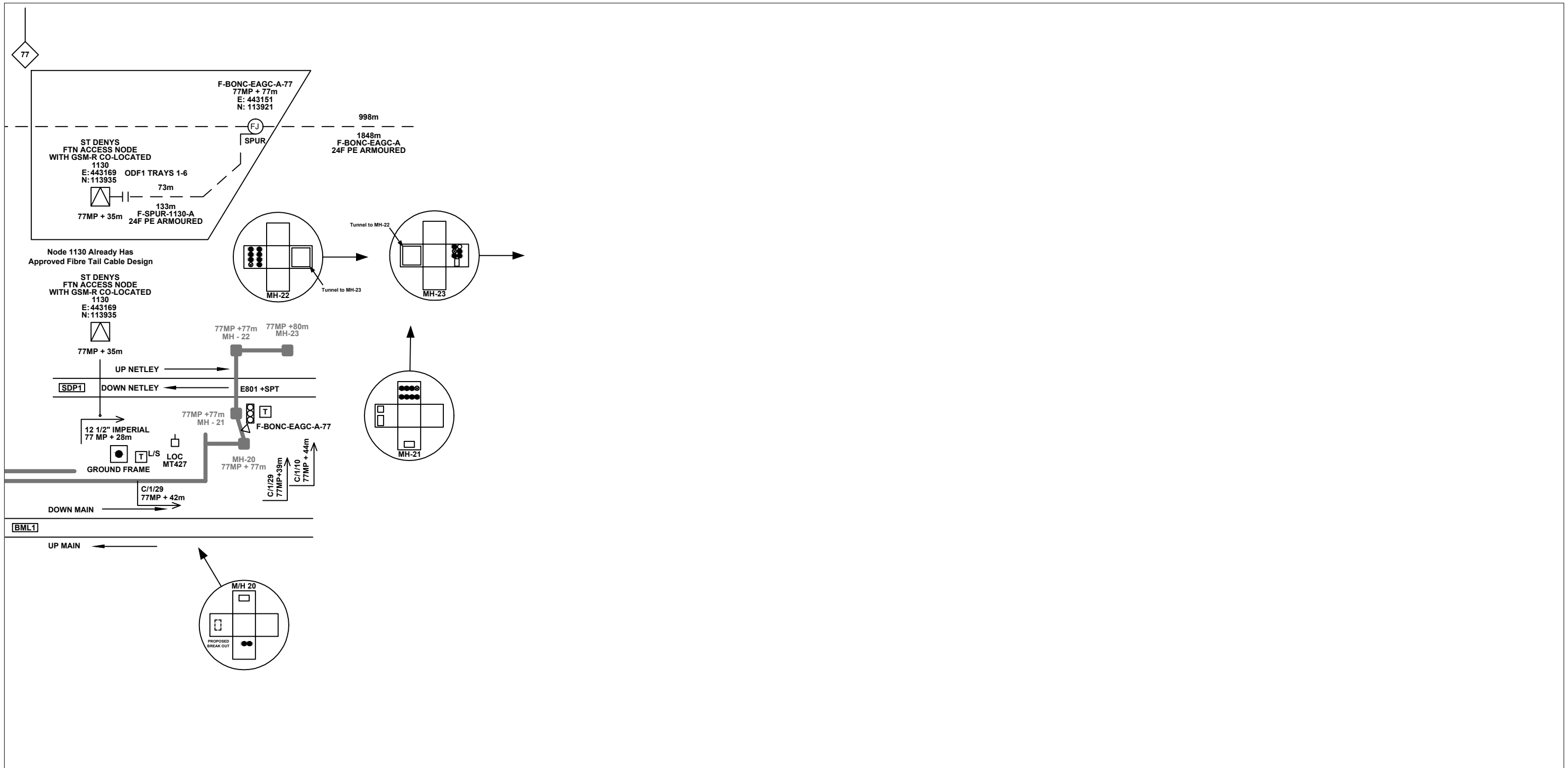
FTN/GSM-R Project
Tournament House
Paddington
London
W2 1HA

Alternative Reference: See Layout Tab 841 x 297 Sheet 3

Drawing Number: NTPO\SLD\1130\ETLS\001

Sheet: 6 of 8

Revision: A



Legend

Cabinet and Verts	Copper Joint	Trough Duct Cable Tray	Signal Box	FTN Core Node	Screen Joint Routeworks	Overbridge	Signal	Engineer's Line Reference	Crossing	GAS — GAS — Gas Line
Cabinet with Regenerator and Verts	Fibre Joint	Cable - Type Identified by FTN Code	Electrical Control Room	Core Node with GSM-R Colocated	Copper Joint Routeworks	Underbridge	Vehicle Access Point	Mile Post	Gantry	HV — HV — HV Cable
KEY	Screening Conductor Joint with/without Earth	Manhole	Mid Length Sheath Gap Fibre	FTN Access Node	Cabinet Routeworks	Manhole details: Cross-To be used, Filled-In use, Clear-Empty	Pedestrian Access Point	Platform	SEW — SEW — Sewer	LV — LV — LV Cable
Proposed Fibre & Civils Elements are shown in RED		Status - as per Key Below	Sheath Gap Copper	FTN Access Node with GSM-R Colocated	Fibre Joint Routeworks	Tunnel	Earth Farm	Telephone	W — W — Water	Cable Pull
Proposed Copper Elements are shown in BLUE		Existing Fibre Cable					Buffer Stop		AC Stanchion	TEL — TEL — Telecoms
Proposed Screening Elements are shown in MAGENTA		Existing Copper Cable								W — W — Water
All Recoveries are shown in GREEN		Existing Screen Cable								

Notes

Contractor(s)

Unit 4 Apex Park, Wainwright Road, Worcester, Worcestershire, WR4 9FN. Tel: 01905 756000

Status: **Design**

Scale(s): NTS

ELR & Mileage: EYD & BML1

Designed	Sign.	Date
Drawn	Sign. <i>D. Andres</i>	Date 15/12/2010
Checked	Sign. <i>[Signature]</i>	Date 15/12/2010
Approved	Sign. <i>[Signature]</i>	Date 15/12/2010
Project		
FTN / GSM-R Project Stage 2 Design		
Drawing Title		
St Denys (1130) to Eastleigh ECR (ETLS)		

FTN/GSM-R Project
Tournament House
Paddington
London
W2 1HA

Alternative Reference: See Layout Tab 841 x 297 Sheet 4

Sheet 8 of 8

Drawing Number: NTPO\SLD\1130\ETLS\001

Revision: A