

**Legend**

Cabinet and Verts	Copper Joint	Trough Duct Cable Tray	Signal Box	FTN Core Node	Screen Joint Routeworks
Cabinet with Regenerator and Verts	Fibre Joint	Cable - Type Identified by FTN Code	Electrical Control Room	Core Node with GSM-R Colocated	Copper Joint Routeworks
Cabinet with Regenerator and Verts	Screening Conductor Joint with/without Earth	Manhole	Mid Length Sheath Gap Fibre	FTN Access Node	Cabinet Routeworks
<b>KEY</b>		Sheath Gap Copper	FTN Access Node with GSM-R Colocated	Fibre Joint Routeworks	

**Manhole details:**  
 Cross - To be used  
 Filled - In use  
 Clear - Empty

**Other Symbols:**  
 Overbridge, Underbridge, Signal, Mile Post, Platform, Telephone, Earth Form, Buffer Stop, Crossing, Gantry, Cable Pull, Mast, Gas Line, HV Cable, LV Cable, Sewer, Telecoms, Water.

**Notes**

11/01/13	Stage 2 As-Built	OW	KS	CT	
24/10/11	Redrafted From 1170-1171-SLD-V1.1.dwg + 1171-1172-SLD-V1.1.dwg	SH	JW	CT	
Rev	Date	Description of Revisions	Drawn	Chkd	Appr

Contractor(s):

**McNicholas** **MURPHY**

**ndcconsultants**

Status: **As-Built**

Scale(s): ELR & Mileage BAE2

Designed	Stephen Holder	Sign.	SMH	Date	24/10/2011
Checked	Joe Winter	Sign.	JW	Date	24/10/2011
Approved	Chris Tappenden	Sign.	CT	Date	24/10/2011

Project: **FTN/GSM-R Project Stage 2 As-Built**

Drawing Title: **The Marshes (1170) to Tisbury (1171) via Tisbury West Xing (6608)**

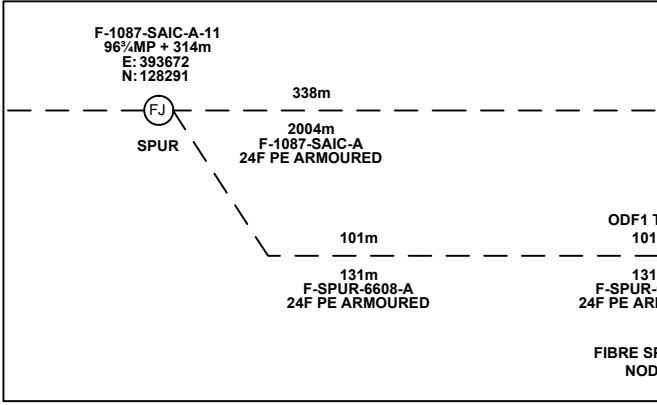
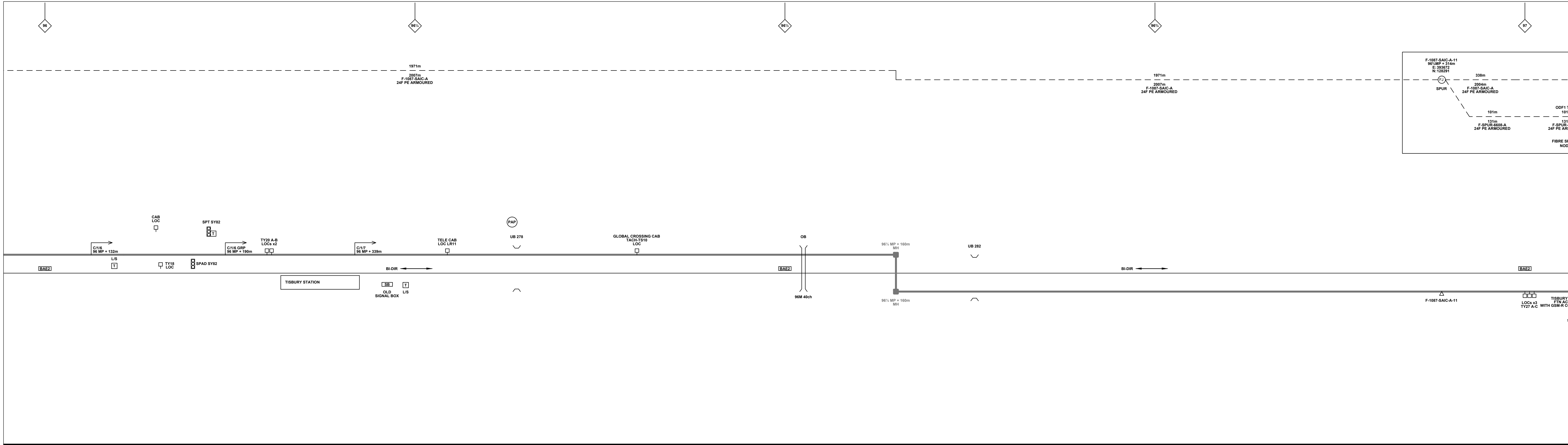
**Network Rail**

FTN/GSM-R Project  
 Tournament House  
 Passington  
 London  
 W2 1HA

Alternative Reference: **See Layout Tab A3 Sheets 1 and 2**

Sheet **1** of **5**

Revision **B**



**Legend**

Cabinet and Verts	Copper Joint	Trough Duct Cable Tray	Signal Box	FTN Core Node	Screen Joint Routeworks	Overbridge	Signal	Engineer's Line Reference	Crossing	Gas Line
Cabinet with Regenerator and Verts	Fibre Joint	Cable - Type Identified by FTN Code	Electrical Control Room	Core Node with GSM-R Colocated	Manhole	Underbridge	Vehicle Access Point	Mile Post	Gantry	HV Cable
<b>KEY</b>	Screening Conductor Joint with/without Earth	Manhole details: Cross-To be used Filled-In use Clear-Empty	Mid Length Sheath Gap Fibre	FTN Access Node	Copper Joint Routeworks	Tunnel	Pedestrian Access Point	Platform	Sewer	LV Cable
<b>Proposed Fibre &amp; Civils Elements are shown in RED</b>	Existing Fibre Cable	Manhole	Sheath Gap Copper	FTN Access Node with GSM-R Colocated	Cabinet Routeworks	Earth Form	Buffer Stop	Telephone	Telecoms	Water
<b>Proposed Copper Elements are shown in BLUE</b>	Existing Copper Cable	Manhole	Sheath Gap Copper	FTN Access Node with GSM-R Colocated	Fibre Joint Routeworks	Earth Form	Buffer Stop	Telephone	Mast	
<b>Proposed Screening Elements are shown in MAGENTA</b>	Existing Screen Cable									
<b>All Recoveries are shown in GREEN</b>										

**Notes**

Rev	Date	Description of Revisions	Drawn	Chkd	Appr
B	11/01/13	Stage 2 As-Built	OW	KS	CT
A	24/10/11	Redrafted From 1170-1171-SLD-V1.1.dwg + 1171-1172-SLD-V1.1.dwg	SH	JW	CT

Contractor(s)

**McNicholas** **MURPHY**

**ndcconsultants**

Status: **As-Built**

Scale(s): NTS

ELR & Mileage: BAE2

Drawn	Checked	Approved	Project	Designated	Sign.	Date
Stephen Holder	Joe Winter	Chris Tappenden	FTN/GSM-R Project	Stephen Holder	<i>[Signature]</i>	24/10/2011
				Joe Winter	<i>[Signature]</i>	24/10/2011
				Chris Tappenden	<i>[Signature]</i>	24/10/2011

Drawing Title: **FTN/GSM-R Project Stage 2 As-Built**

**The Marshes (1170) to Tisbury (1171) via Tisbury West Xing (6608)**

**Network Rail**

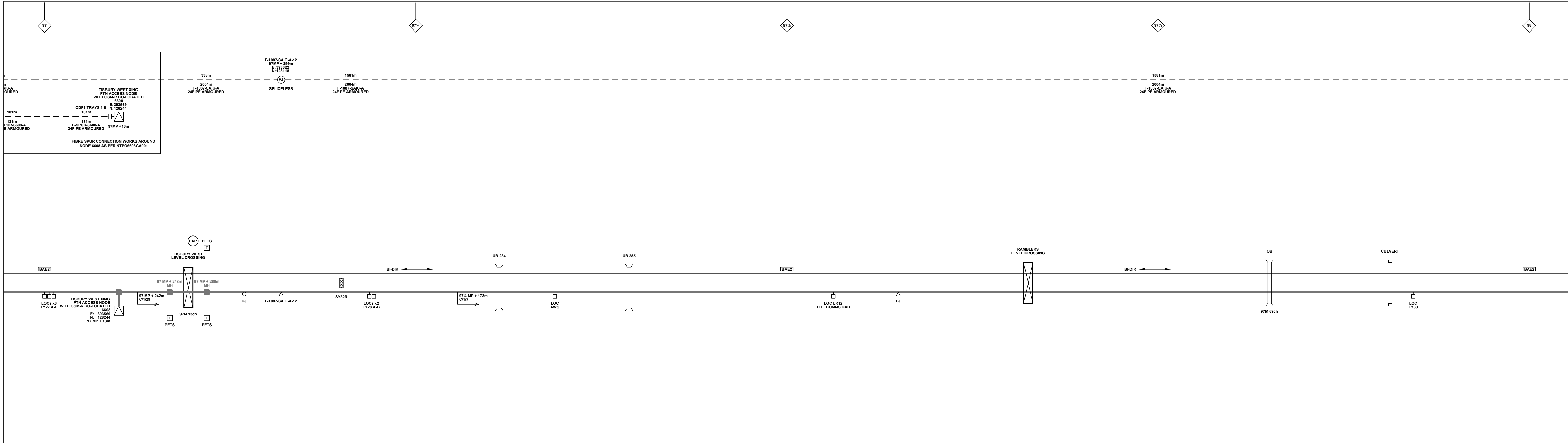
FTN/GSM-R Project  
Tournament House  
Passington  
London  
W2 1HA

Alternative Reference: **See Layout Tab A3 Sheets 3 and 4**

Sheet: **2 of 5**

Revision: **B**

Drawing Number: **NTPO\SLD\1170\1171\001**



**Notes**

Rev	Date	Description of Revisions	Drawn	Chkd	Appr
B	11/01/13	Stage 2 As-Built	OW	KS	CT
A	24/10/11	Redrafted From 1170-1171-SLD-V1.1.dwg + 1171-1172-SLD-V1.1.dwg	SH	JW	CT

Contractor(s): **McNicholas** **MURPHY**

ndc consultants

Status: **As-Built**

Scale(s): NTS

ELR & Mileage: BAE2

Drawn	Checked	Approved	Sign.	Date
Stephen Holder	Joe Winter	Chris Tappenden		24/10/2011

Project: **FTN/GSM-R Project Stage 2 As-Built**

Drawing Title: **The Marshes (1170) to Tisbury (1171) via Tisbury West Xing (6608)**

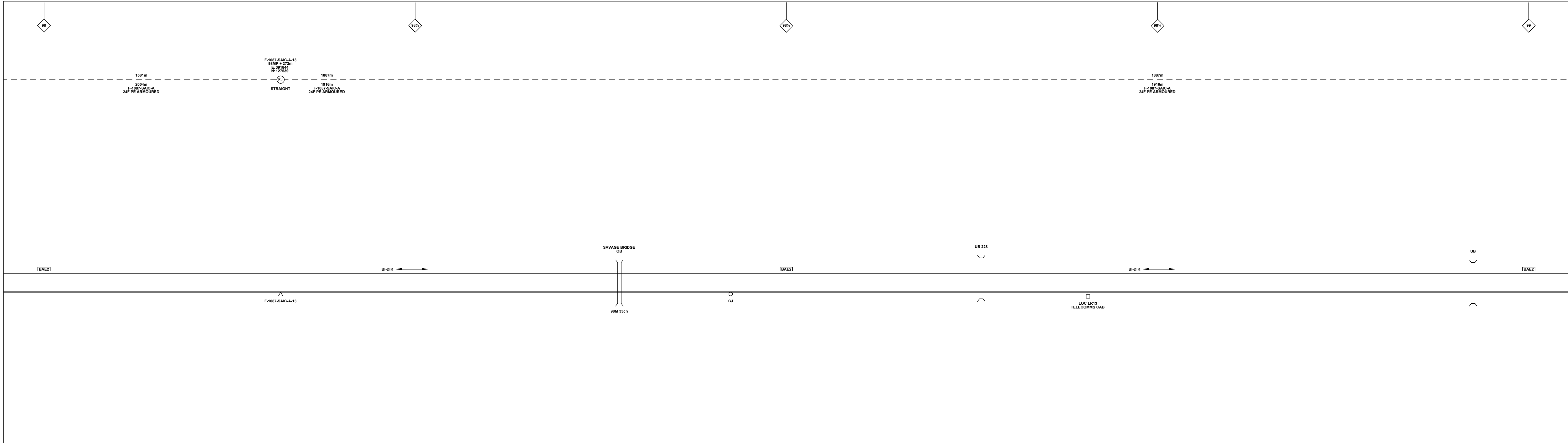
**Network Rail**

FTN/GSM-R Project  
Tournament House  
Passington  
London  
W2 1HA

Alternative Reference: See Layout Tab A3 Sheets 5 and 6

Sheet: 3 of 5

Revision: B



**Legend**

Cabinet and Verts	Copper Joint	Trough Duct Cable Tray	Signal Box	FTN Core Node	Screen Joint Routeworks	Overbridge	Signal	Engineer's Line Reference	Gas Line
Cabinet with Regenerator and Verts	Fibre Joint	Cable - Type Identified by FTN Code	Electrical Control Room	Core Node with GSM-R Colocated	Copper Joint Routeworks	Underbridge	Vehicle Access Point	Mile Post	HV Cable
<b>KEY</b>	Screening Conductor Joint with/without Earth	Manhole	Mid Length Sheath Gap Fibre	FTN Access Node	Cabinet Routeworks	Platform	Pedestrian Access Point	Sewer	LV Cable
Proposed Fibre & Civils Elements are shown in RED	Manhole	Sheath Gap Copper	FTN Access Node with GSM-R Colocated	Fibre Joint Routeworks	Earth Form	Buffer Stop	Telephone	Telecoms	Water
Proposed Copper Elements are shown in BLUE	Manhole	Manhole	Manhole	Manhole	Manhole	Manhole	Manhole	Manhole	Manhole
Proposed Screening Elements are shown in MAGENTA	Manhole	Manhole	Manhole	Manhole	Manhole	Manhole	Manhole	Manhole	Manhole
All Existing Elements are shown in BLACK	Manhole	Manhole	Manhole	Manhole	Manhole	Manhole	Manhole	Manhole	Manhole
Existing Fibre Cable	Manhole	Manhole	Manhole	Manhole	Manhole	Manhole	Manhole	Manhole	Manhole
Existing Copper Cable	Manhole	Manhole	Manhole	Manhole	Manhole	Manhole	Manhole	Manhole	Manhole
Existing Screen Cable	Manhole	Manhole	Manhole	Manhole	Manhole	Manhole	Manhole	Manhole	Manhole

Manhole details: Cross-To be used Filled-In use Clear-Empty

Tunnel

Cable Pull: Copper Blue Fibre Red Screen Green

**Notes**

Rev	Date	Description of Revisions	Drawn	Chkd	Appr
B	11/01/13	Stage 2 As-Built	OW	KS	CT
A	24/10/11	Redrafted From 1170-1171-SLD-V1.1.dwg + 1171-1172-SLD-V1.1.dwg	SH	JW	CT

Contractor(s)

**McNicholas MURPHY**

**ndcconsultants**

Status: **As-Built**

Scale(s): NTS

ELR & Mileage: BAE2

Designed	Stephen Holder	Sign.	[Signature]	Date	24/10/2011
Checked	Joe Winter	Sign.	[Signature]	Date	24/10/2011
Approved	Chris Tappenden	Sign.	[Signature]	Date	24/10/2011

Project: FTN/GSM-R Project Stage 2 As-Built

Drawing Title: The Marshes (1170) to Tisbury (1171) via Tisbury West Xing (6608)

**Network Rail**

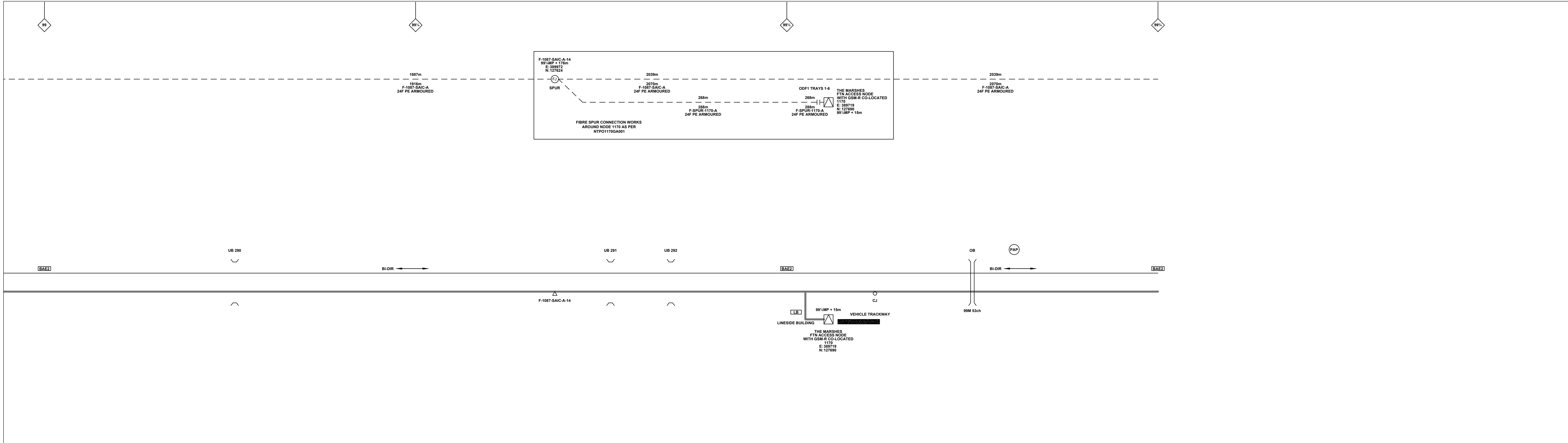
FTN/GSM-R Project  
Tournament House  
Passington  
London  
W2 1HA

Alternative Reference: See Layout Tab A3 Sheets 7 and 8

Sheet: 4 of 5

Drawing Number: NTPO\SLD\1170\1171\001

Revision: B



**Legend**

Cabinet and Verts	Copper Joint	Trough Duct Cable Tray	Signal Box	FTN Core Node	Screen Joint Routeworks	Manhole details: Cross-To be used Filled-In use Clear-Empty	Overbridge	Signal	Engineer's Line Reference	GAS — GAS — Gas Line
Cabinet with Regenerator and Verts	Fibre Joint	Cable - Type Identified by FTN Code Status - as per Key Below	Electrical Control Room	Core Node with GSM-R Colocated	Copper Joint Routeworks	Manhole	Underbridge	Vehicle Access Point	Mile Post	HV — HV — HV Cable
<b>KEY</b>	Screening Conductor Joint with/without Earth	2034m F-DIDC-RGAC-A	Mid Length Sheath Gap Fibre	FTN Access Node	Cabinet Routeworks	Tunnel	Pedestrian Access Point	Platform	LV — LV — LV Cable	
Proposed Fibre & Civils Elements are shown in RED		All Existing Elements are shown in BLACK	Sheath Gap Copper	FTN Access Node with GSM-R Colocated	Fibre Joint Routeworks	Earth Form	Buffer Stop	Telephone	SEW — SEW — Sewer	
Proposed Copper Elements are shown in BLUE		Existing Fibre Cable							TEL — TEL — Telecoms	
Proposed Screening Elements are shown in MAGENTA		Existing Copper Cable							W — W — Water	
All Recoveries are shown in GREEN		Existing Screen Cable							Mast	

**Notes**

B	11/01/13	Stage 2 As-Built	OW	KS	CT
A	24/10/11	Redrafted From 1170-1171-SLD-V1.1.dwg + 1171-1172-SLD-V1.1.dwg	SH	JW	CT
Rev	Date	Description of Revisions	Drawn	Chkd	Appr

Contractor(s)

**McNicholas** **MURPHY**

**ndcconsultants**

Status: **As-Built**

Scale(s): ELR & Mileage BAE2

Designed	Stephen Holder	Sign.	[Signature]	Date	24/10/2011
Checked	Joe Winter	Sign.	[Signature]	Date	24/10/2011
Approved	Chris Tappenden	Sign.	[Signature]	Date	24/10/2011
Project	FTN/GSM-R Project Tournament House Passington London W2 1HA				
Drawing Title	The Marshes (1170) to Tisbury (1171) via Tisbury West Xing (6608)				

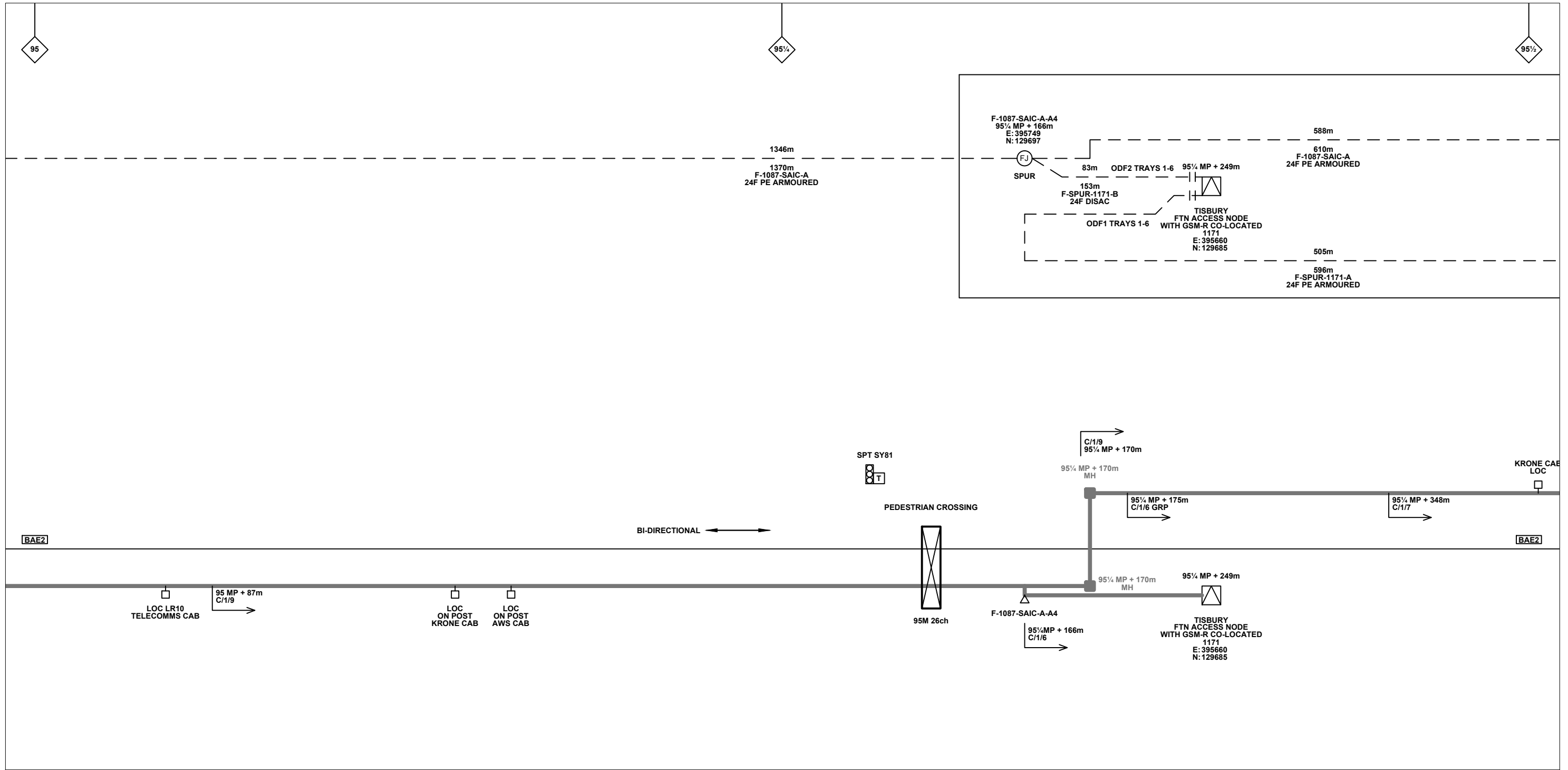
**Network Rail**

Alternative Reference: See Layout Tab A3 Sheets 9 and 10

Drawing Number: NTPO\SLD\1170\1171\001

Sheet: 5 of 5

Revision: B



**Legend**

Cabinet and Verts	Copper Joint	Trough Duct Cable Tray	Signal Box	FTN Core Node	Screen Joint Routeworks	Overbridge	Signal	Engineer's Line Reference	Crossing	Gas Line
Cabinet with Regenerator and Verts	Fibre Joint	Cable - Type Identified by FTN Code	Electrical Control Room	Core Node with GSM-R Colocated	Copper Joint Routeworks	Manhole	Vehicle Access Point	Mile Post	HV Cable	LV Cable
<b>KEY</b>	Screening Conductor Joint with/without Earth	Status - as per Key Below	Mid Length Sheath Gap Fibre	FTN Access Node	Cabinet Routeworks	Manhole details: Cross-To be used	Pedestrian Access Point	Platform	Sewer	Telecoms
Proposed Fibre & Civils Elements are shown in RED		All Existing Elements are shown in BLACK	Sheath Gap Copper	FTN Access Node with GSM-R Colocated	Fibre Joint Routeworks	Clear-Empty	Earth Farm	Buffer Stop	Water	Mast
Proposed Copper Elements are shown in BLUE		Existing Fibre Cable				Tunnel				
Proposed Screening Elements are shown in MAGENTA		Existing Copper Cable								
All Recoveries are shown in GREEN		Existing Screen Cable								

Notes

Rev	Date	Description of Revisions	Drawn	Chkd	Appr
B	11/01/13	Stage 2 As-Built	OW	KS	CT
A	24/10/11	Redrafted From 1170-1171-SLD-V1.1.dwg + 1171-1172-SLD-V1.1.dwg	SH	JW	CT

Contractor(s)

Status: **As-Built**

Scale(s): NTS

ELR & Mileage: BAE2

Designed		Sign.		Date	
Drawn	Stephen Holder	Sign.		Date	24/10/2011
Checked	Joe Winter	Sign.		Date	24/10/2011
Approved	Chris Tappenden	Sign.		Date	24/10/2011
Project	FTN/GSM-R Project Stage 2 As-Built				
Drawing Title	The Marshes (1170) to Tisbury (1171) via Tisbury West Xing (6608)				

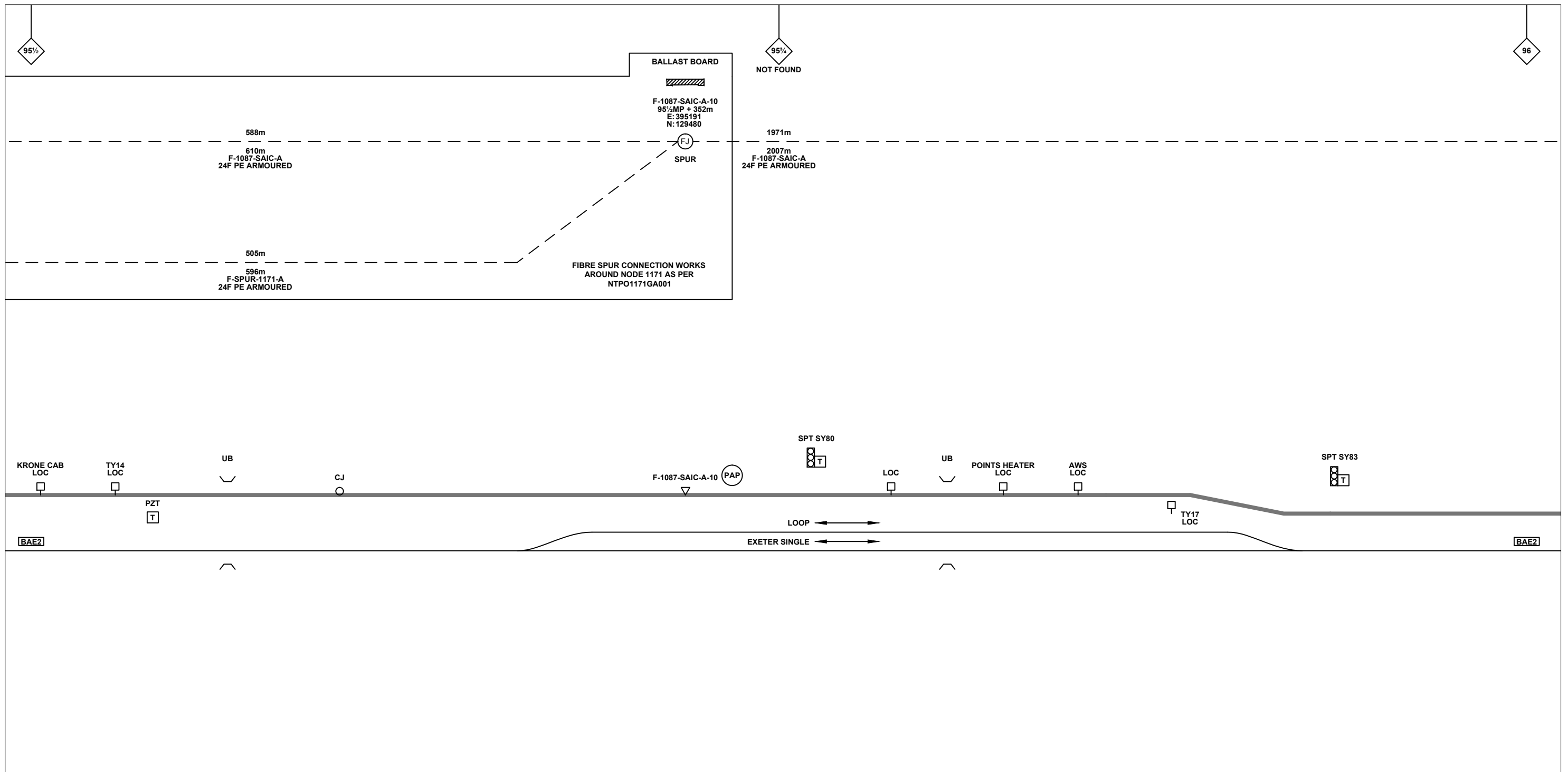
FTN/GSM-R Project  
Tournament House  
Paddington  
London  
W2 1HA

Alternative Reference: See Layout Tab 841 x 297 Sheet 1

Drawing Number: NTPO\SLD\1170\1171\001

Sheet: 1 of 10

Revision: B



**Legend**

Cabinet and Verts	Copper Joint	Trough Duct Cable Tray	Signal Box	FTN Core Node	Screen Joint Routeworks	Overbridge	Signal	Engineer's Line Reference	Crossing	Gas Line
Cabinet with Regenerator and Verts	Fibre Joint	Cable - Type Identified by FTN Code	Electrical Control Room	Core Node with GSM-R Colocated	Copper Joint Routeworks	Manhole	Vehicle Access Point	Mile Post	HV Cable	LV Cable
<b>KEY</b>	Screening Conductor Joint with/without Earth	Status - as per Key Below	Mid Length Sheath Gap Fibre	FTN Access Node	Cabinet Routeworks	Tunnel	Pedestrian Access Point	Platform	Sewer	Water
Proposed Fibre & Civils Elements are shown in RED		All Existing Elements are shown in BLACK	Sheath Gap Copper	FTN Access Node with GSM-R Colocated	Fibre Joint Routeworks	Earth Farm	Buffer Stop	Telephone	Cable Pull	Mast
Proposed Copper Elements are shown in BLUE		Existing Fibre Cable								
Proposed Screening Elements are shown in MAGENTA		Existing Copper Cable								
All Recoveries are shown in GREEN		Existing Screen Cable								

Notes

Rev	Date	Description of Revisions	Drawn	Chkd	Appr
B	11/01/13	Stage 2 As-Built	OW	KS	CT
A	24/10/11	Redrafted From 1170-1171-SLD-V1.1.dwg + 1171-1172-SLD-V1.1.dwg	SH	JW	CT

Contractor(s)

Status: **As-Built**

Scale(s): NTS

ELR & Mileage: BAE2

Designed		Sign.		Date	
Drawn	Stephen Holder	Sign.		Date	24/10/2011
Checked	Joe Winter	Sign.		Date	24/10/2011
Approved	Chris Tappenden	Sign.		Date	24/10/2011
Project	FTN/GSM-R Project Stage 2 As-Built				
Drawing Title	The Marshes (1170) to Tisbury (1171) via Tisbury West Xing (6608)				

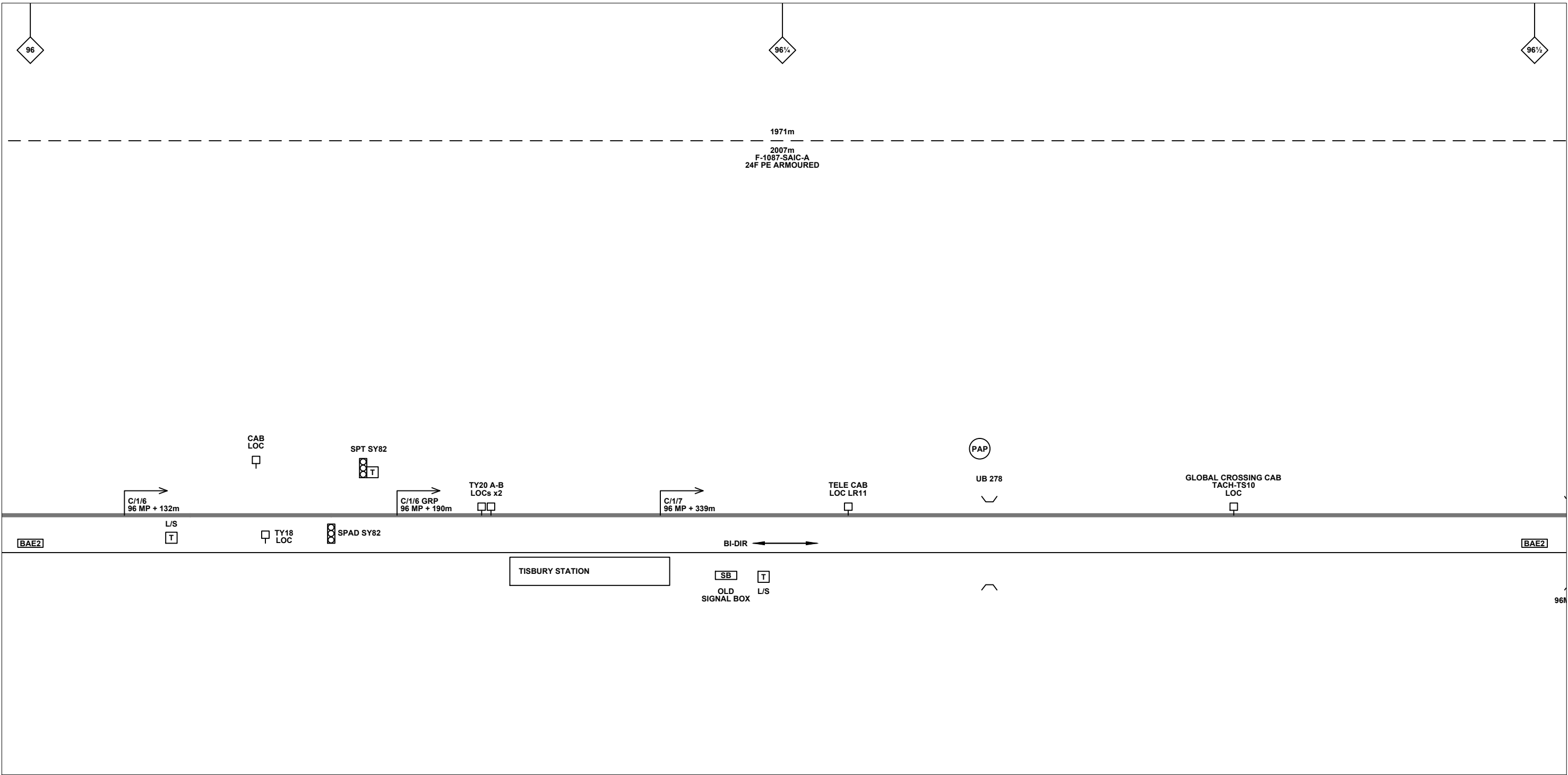
FTN/GSM-R Project  
Tournament House  
Paddington  
London  
W2 1HA

Alternative Reference: See Layout Tab 841 x 297 Sheet 1

Drawing Number: NTPO\SLD\1170\1171\001

Sheet: 2 of 10

Revision: B



**Legend**

Cabinet and Verts	Copper Joint	Trough Duct Cable Tray	Signal Box	FTN Core Node	Screen Joint Routeworks	Overbridge	Signal	Engineer's Line Reference	Crossing	Gas Line
Cabinet with Regenerator and Verts	Fibre Joint	Cable - Type Identified by FTN Code	Electrical Control Room	Core Node with GSM-R Colocated	Copper Joint Routeworks	Manhole	Vehicle Access Point	Mile Post	HV Cable	LV Cable
<b>KEY</b>	Screening Conductor Joint with/without Earth	Status - as per Key Below	Mid Length Sheath Gap Fibre	FTN Access Node	Cabinet Routeworks	Manhole details: Cross-To be used, Filled-In use, Clear-Empty	Pedestrian Access Point	Platform	Sewer	Telecoms
Proposed Fibre & Civils Elements are shown in RED		All Existing Elements are shown in BLACK	Sheath Gap Copper	FTN Access Node with GSM-R Colocated	Fibre Joint Routeworks	Tunnel	Earth Farm	Buffer Stop	Water	Mast
Proposed Copper Elements are shown in BLUE		Existing Fibre Cable								
Proposed Screening Elements are shown in MAGENTA		Existing Copper Cable								
All Recoveries are shown in GREEN		Existing Screen Cable								

Notes

Rev	Date	Description of Revisions	Drawn	Chkd	Appr
B	11/01/13	Stage 2 As-Built	OW	KS	CT
A	24/10/11	Redrafted From 1170-1171-SLD-V1.1.dwg + 1171-1172-SLD-V1.1.dwg	SH	JW	CT

Contractor(s)

Status: **As-Built**

Scale(s): NTS

ELR & Mileage: BAE2

Designed		Sign.		Date	
Drawn	Stephen Holder	Sign.		Date	24/10/2011
Checked	Joe Winter	Sign.		Date	24/10/2011
Approved	Chris Tappenden	Sign.		Date	24/10/2011
Project	FTN/GSM-R Project Stage 2 As-Built				
Drawing Title	The Marshes (1170) to Tisbury (1171) via Tisbury West Xing (6608)				

FTN/GSM-R Project  
Tournament House  
Paddington  
London  
W2 1HA

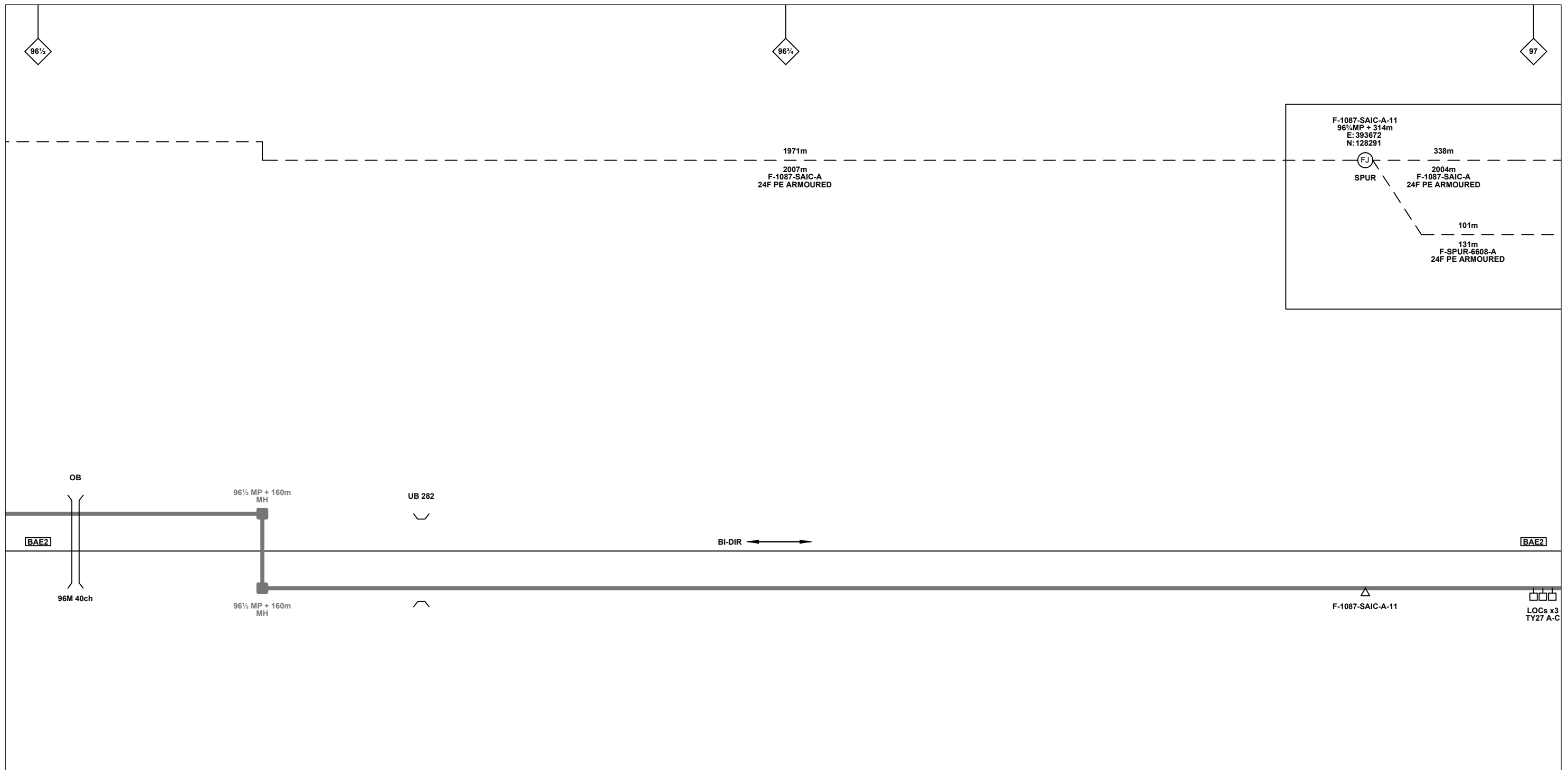
Alternative Reference: See Layout Tab 841 x 297 Sheet 2

Drawing Number: NTPO\SLD\1170\1171\001

Sheet: 3 of 10

Revision: B



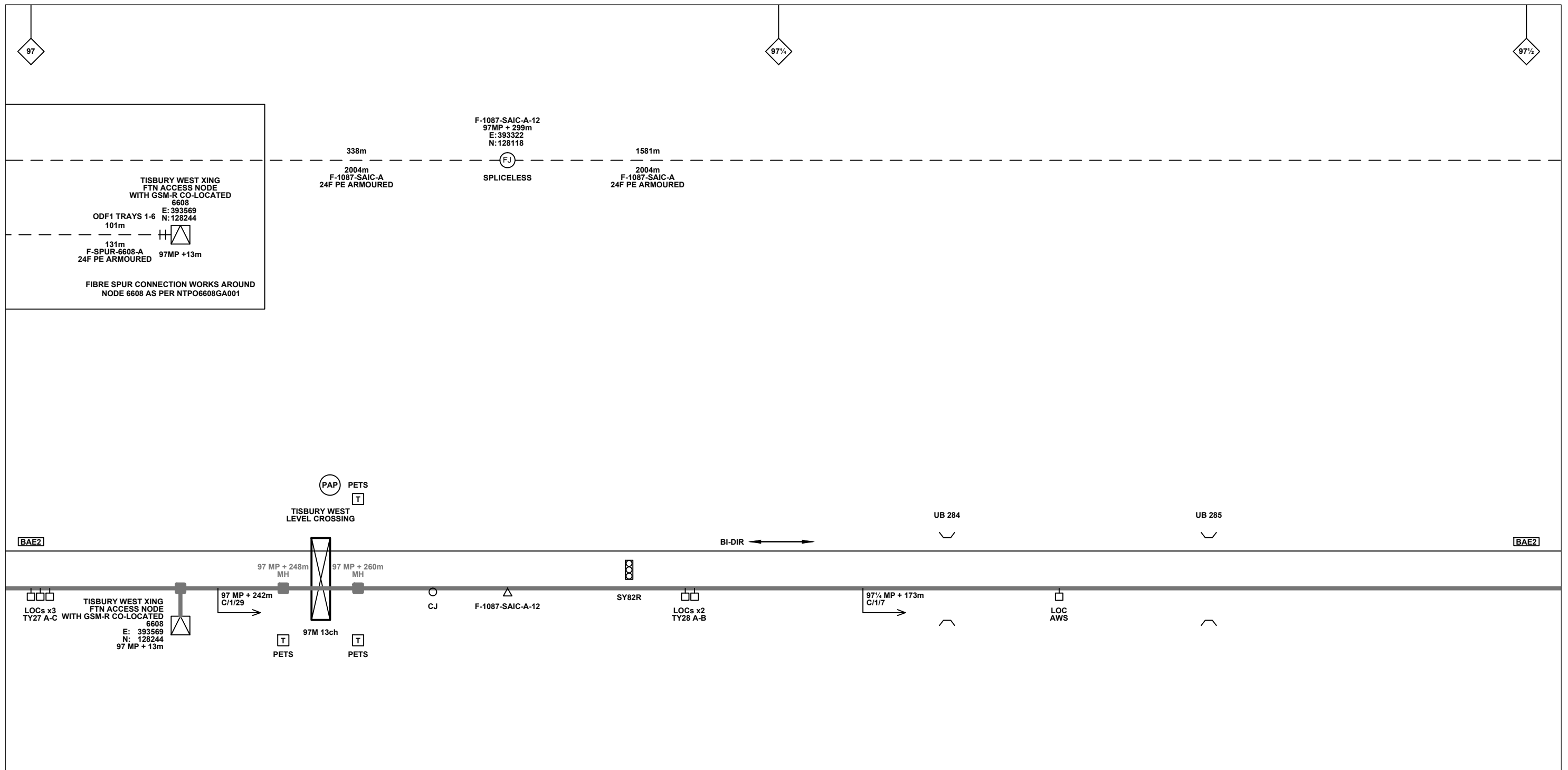


**Legend**

Cabinet and Verts	Copper Joint	Signal Box	FTN Core Node	Screen Joint Routeworks	Overbridge	Signal	Engineer's Line Reference	Crossing	Gas Line
Cabinet with Regenerator and Verts	Fibre Joint	Electrical Control Room	Core Node with GSM-R Colocated	Copper Joint Routeworks	Underbridge	Vehicle Access Point	Mile Post	Gantry	HV Cable
<b>KEY</b>	Screening Conductor Joint with/without Earth	Manhole	FTN Access Node	Cabinet Routeworks	Manhole details: Cross-To be used, Filled-In use, Clear-Empty	Pedestrian Access Point	Platform	Sewer	LV Cable
Proposed Fibre & Civils Elements are shown in RED		Mid Length Sheath Gap Fibre	FTN Access Node with GSM-R Colocated	Fibre Joint Routeworks	Tunnel	Earth Farm	Telephone	Water	Mast
Proposed Copper Elements are shown in BLUE		Sheath Gap Copper				Buffer Stop			
Proposed Screening Elements are shown in MAGENTA									
All Recoveries are shown in GREEN									

1988m  
 2034m  
 Cable - Type Identified by FTN Code Status - as per Key Below  
 Trough Duct Cable Tray  
 Existing Fibre Cable  
 Existing Copper Cable  
 Existing Screen Cable

Contractor(s)		 		Designed		Sign.		Date	
Status		As-Built		Drawn	Stephen Holder	Sign.		Date	24/10/2011
Scale(s)		NTS		Checked	Joe Winter	Sign.		Date	24/10/2011
ELR & Mileage		BAE2		Approved	Chris Tappenden	Sign.		Date	24/10/2011
Drawing Title		The Marshes (1170) to Tisbury (1171) via Tisbury West Xing (6608)		Project		FTN/GSM-R Project Stage 2 As-Built		FTN/GSM-R Project Tournament House Paddington London W2 1HA	
Alternative Reference		See Layout Tab 841 x 297 Sheet 2		Drawing Number		NTPO\SLD\1170\1171\001		Sheet 4 of 10	
Revision		B		Date		11/01/13		Description of Revisions	
Rev	Date	Description of Revisions		Drawn	Chkd	Appr			
B	11/01/13	Stage 2 As-Built		OW	KS	CT			
A	24/10/11	Redrafted From 1170-1171-SLD-V1.1.dwg + 1171-1172-SLD-V1.1.dwg		SH	JW	CT			



**Legend**

Cabinet and Verts	Copper Joint	Trough Duct Cable Tray	Signal Box	FTN Core Node	Screen Joint Routeworks	Overbridge	Signal	Engineer's Line Reference	Crossing	Gas Line
Cabinet with Regenerator and Verts	Fibre Joint	Cable - Type Identified by FTN Code	Electrical Control Room	Core Node with GSM-R Colocated	Copper Joint Routeworks	Manhole	Vehicle Access Point	Mile Post	Gantry	HV Cable
<b>KEY</b>	Screening Conductor Joint with/without Earth	Manhole	Mid Length Sheath Gap Fibre	FTN Access Node	Cabinet Routeworks	Manhole details: Cross-To be used, Filled-In use, Clear-Empty	Pedestrian Access Point	Platform	Sewer	LV Cable
Proposed Fibre & Civils Elements are shown in RED		Manhole	Sheath Gap Copper	FTN Access Node with GSM-R Colocated	Fibre Joint Routeworks	Tunnel	Earth Farm	Buffer Stop	Telecoms	Water
Proposed Copper Elements are shown in BLUE		Manhole						Telephone	Cable Pull	Mast
Proposed Screening Elements are shown in MAGENTA										
All Recoveries are shown in GREEN										

Notes

Rev	Date	Description of Revisions	Drawn	Chkd	Appr
B	11/01/13	Stage 2 As-Built	OW	KS	CT
A	24/10/11	Redrafted From 1170-1171-SLD-V1.1.dwg + 1171-1172-SLD-V1.1.dwg	SH	JW	CT

Contractor(s)

Status: **As-Built**

Scale(s): NTS

ELR & Mileage: BAE2

Designed		Sign.		Date	
Drawn	Stephen Holder	Sign.		Date	24/10/2011
Checked	Joe Winter	Sign.		Date	24/10/2011
Approved	Chris Tappenden	Sign.		Date	24/10/2011
Project	FTN/GSM-R Project Stage 2 As-Built				
Drawing Title	The Marshes (1170) to Tisbury (1171) via Tisbury West Xing (6608)				

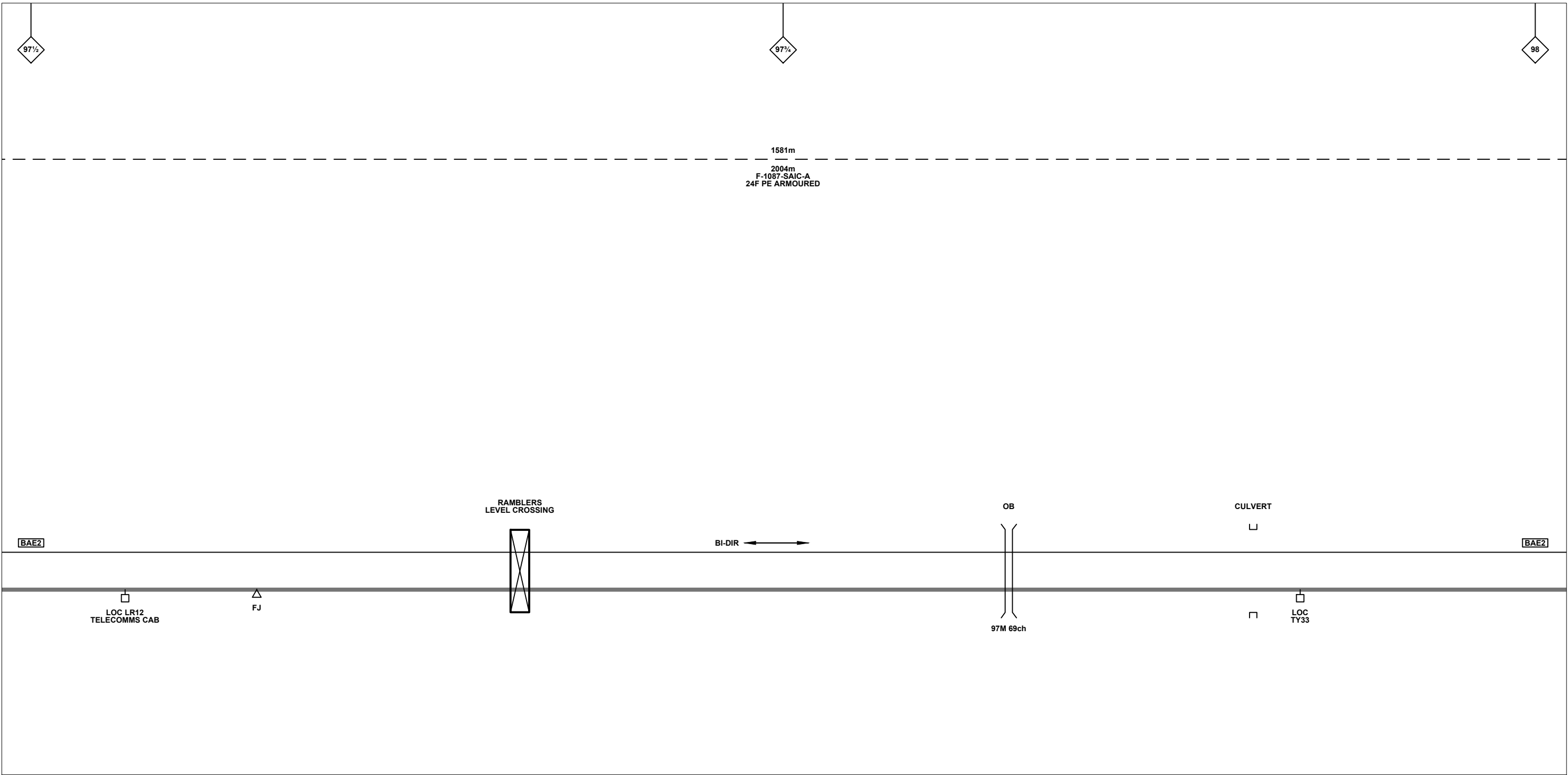
FTN/GSM-R Project  
Tournament House  
Paddington  
London  
W2 1HA

Alternative Reference: See Layout Tab 841 x 297 Sheet 3

Drawing Number: NTPO\SLD\1170\1171\001

Sheet: 5 of 10

Revision: B



**Legend**

Cabinet and Verts	Copper Joint	Trough Duct Cable Tray	Signal Box	FTN Core Node	Screen Joint Routeworks	Overbridge	Signal	Engineer's Line Reference	Crossing	Gas Line
Cabinet with Regenerator and Verts	Fibre Joint	Cable - Type Identified by FTN Code	Electrical Control Room	Core Node with GSM-R Colocated	Copper Joint Routeworks	Underbridge	Vehicle Access Point	Mile Post	HV Cable	LV Cable
<b>KEY</b>	Screening Conductor Joint with/without Earth	Manhole	Mid Length Sheath Gap Fibre	FTN Access Node	Cabinet Routeworks	Manhole details: Cross-To be used	Pedestrian Access Point	Platform	Sewer	Telecoms
Proposed Fibre & Civils Elements are shown in RED		Sheath Gap Copper	FTN Access Node with GSM-R Colocated	Fibre Joint Routeworks	Tunnel	Earth Farm	Buffer Stop	Telephone	Water	Mast
Proposed Copper Elements are shown in BLUE										
Proposed Screening Elements are shown in MAGENTA										
All Recoveries are shown in GREEN										
All Existing Elements are shown in BLACK										
Existing Fibre Cable										
Existing Copper Cable										
Existing Screen Cable										

Notes

Rev	Date	Description of Revisions	Drawn	Chkd	Appr
B	11/01/13	Stage 2 As-Built	OW	KS	CT
A	24/10/11	Redrafted From 1170-1171-SLD-V1.1.dwg + 1171-1172-SLD-V1.1.dwg	SH	JW	CT

Contractor(s)

Status: **As-Built**

Scale(s): NTS

ELR & Mileage: BAE2

Designed		Sign.		Date	
Drawn	Stephen Holder	Sign.		Date	24/10/2011
Checked	Joe Winter	Sign.		Date	24/10/2011
Approved	Chris Tappenden	Sign.		Date	24/10/2011
Project	FTN/GSM-R Project Stage 2 As-Built				
Drawing Title	The Marshes (1170) to Tisbury (1171) via Tisbury West Xing (6608)				

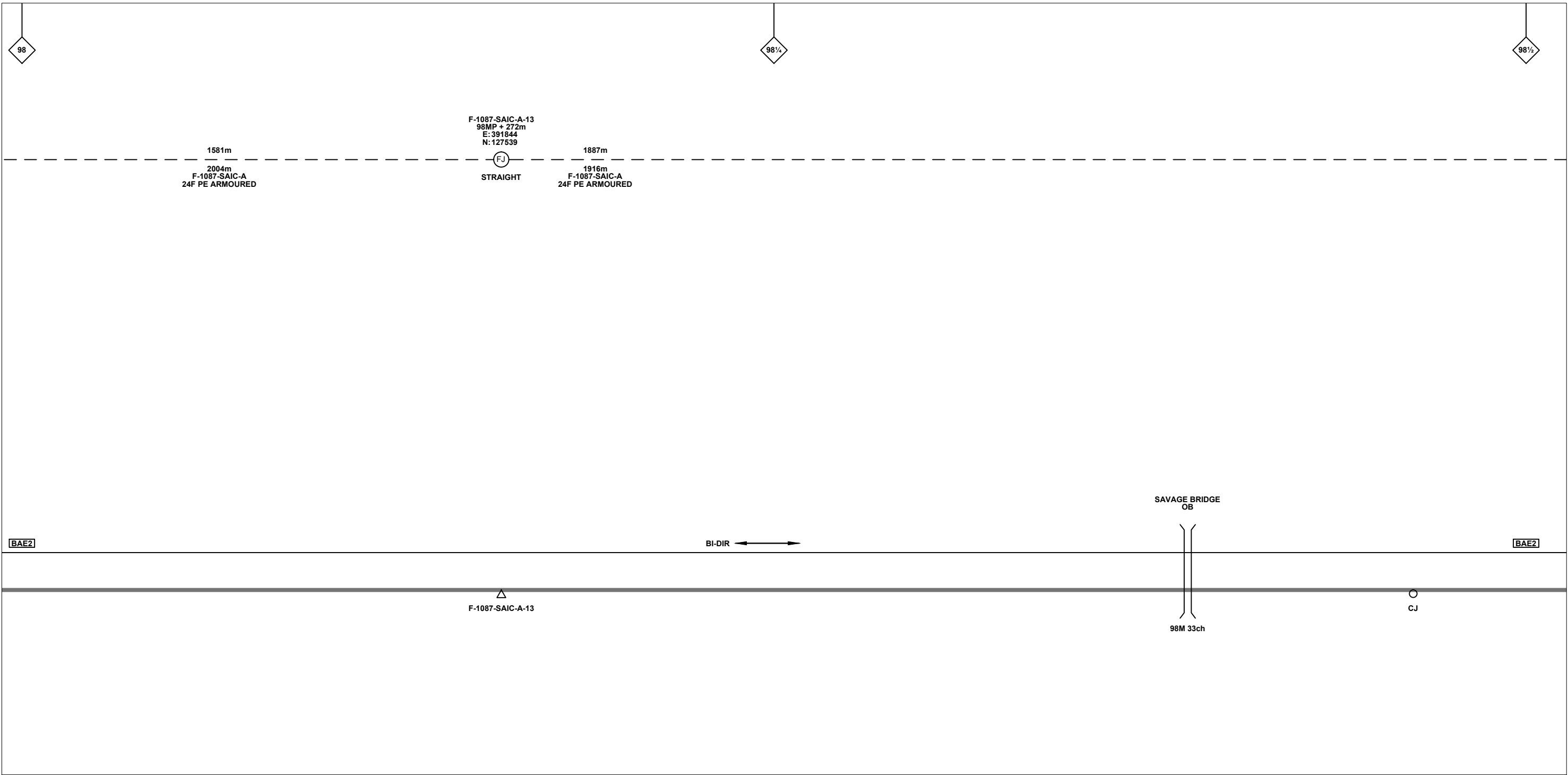
FTN/GSM-R Project  
Tournament House  
Paddington  
London  
W2 1HA

Alternative Reference: See Layout Tab 841 x 297 Sheet 3

Drawing Number: NTPO\SLD\1170\1171\001

Sheet: 6 of 10

Revision: B



**Legend**

Cabinet and Verts	Copper Joint	Trough Duct Cable Tray	Signal Box	FTN Core Node	Screen Joint Routeworks	Overbridge	Signal	Engineer's Line Reference	Crossing	GAS — GAS — GAS — Gas Line
Cabinet with Regenerator and Verts	Fibre Joint	Cable - Type Identified by FTN Code	Electrical Control Room	Core Node with GSM-R Colocated	Copper Joint Routeworks	Manhole	VAP Vehicle Access Point	Mile Post	HV — HV — HV — HV Cable	LV — LV — LV — LV Cable
<b>KEY</b>	Screening Conductor Joint with/without Earth	Status - as per Key Below	Mid Length Sheath Gap Fibre	FTN Access Node	Cabinet Routeworks	Tunnel	PAP Pedestrian Access Point	Platform	SEW — SEW — SEW — Sewer	TEL — TEL — TEL — Telecoms
Proposed Fibre & Civils Elements are shown in RED		All Existing Elements are shown in BLACK	Sheath Gap Copper	FTN Access Node with GSM-R Colocated	Fibre Joint Routeworks	Earth Farm	Buffer Stop	Telephone	W — W — W — Water	Mast
Proposed Copper Elements are shown in BLUE		--- Existing Fibre Cable								
Proposed Screening Elements are shown in MAGENTA		--- Existing Copper Cable								
All Recoveries are shown in GREEN		--- Existing Screen Cable								

Notes

Rev	Date	Description of Revisions	Drawn	Chkd	Appr
B	11/01/13	Stage 2 As-Built	OW	KS	CT
A	24/10/11	Redrafted From 1170-1171-SLD-V1.1.dwg + 1171-1172-SLD-V1.1.dwg	SH	JW	CT

Contractor(s)

Status: **As-Built**

Scale(s): NTS

ELR & Mileage: BAE2

Designed		Sign.		Date	
Drawn	Stephen Holder	Sign.		Date	24/10/2011
Checked	Joe Winter	Sign.		Date	24/10/2011
Approved	Chris Tappenden	Sign.		Date	24/10/2011
Project	FTN/GSM-R Project Stage 2 As-Built				
Drawing Title	The Marshes (1170) to Tisbury (1171) via Tisbury West Xing (6608)				

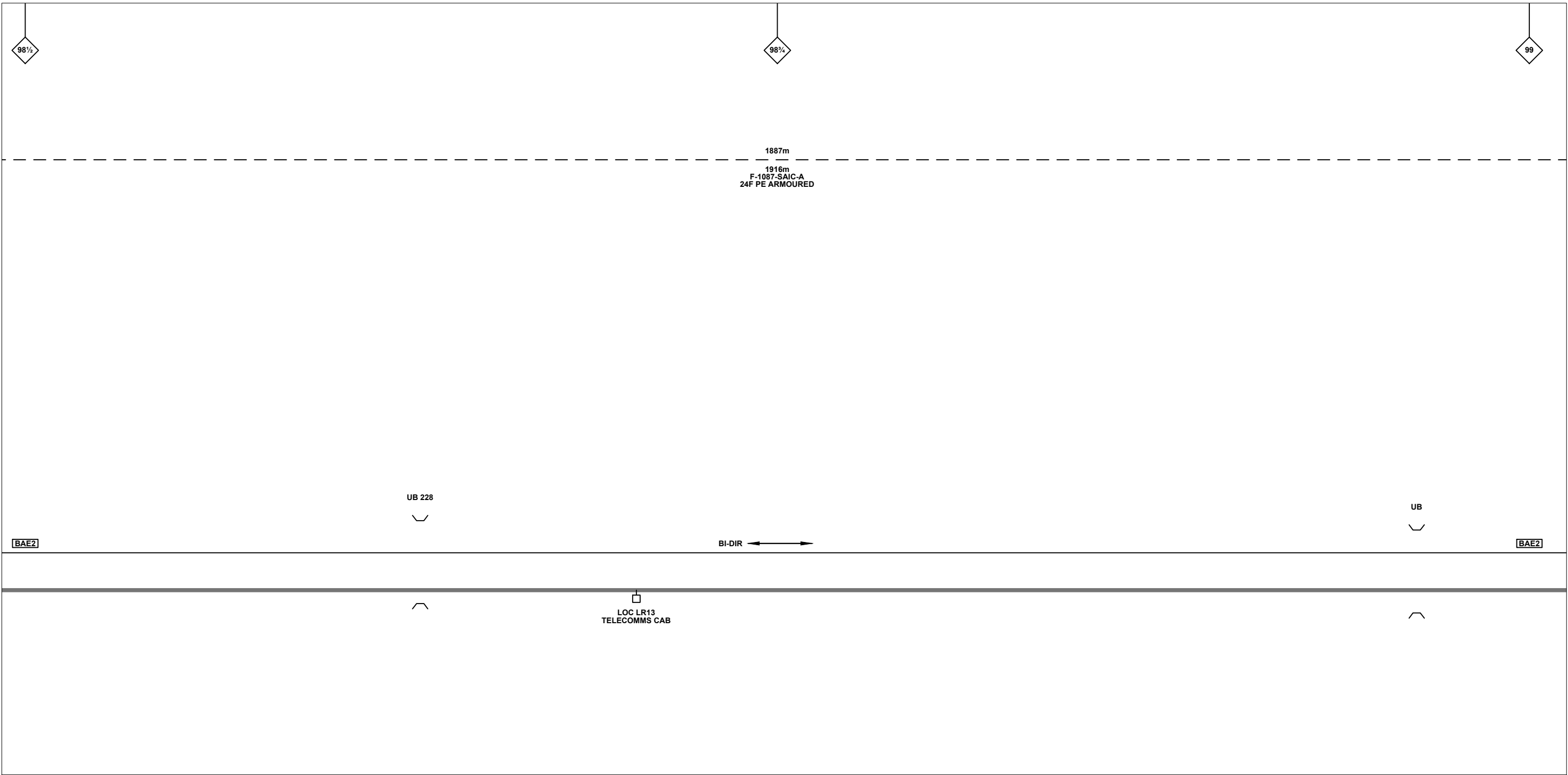
FTN/GSM-R Project  
Tournament House  
Paddington  
London  
W2 1HA

Alternative Reference: See Layout Tab 841 x 297 Sheet 4

Drawing Number: NTPO\SLD\1170\1171\001

Sheet: 7 of 10

Revision: B



**Legend**

Cabinet and Verts	Copper Joint	Trough Duct Cable Tray	Signal Box	FTN Core Node	Screen Joint Routeworks	Overbridge	Signal	Engineer's Line Reference	Crossing	Gas Line
Cabinet with Regenerator and Verts	Fibre Joint	Cable - Type Identified by FTN Code	Electrical Control Room	Core Node with GSM-R Colocated	Copper Joint Routeworks	Manhole	Vehicle Access Point	Mile Post	HV Cable	LV Cable
<b>KEY</b>	Screening Conductor Joint with/without Earth	Status - as per Key Below	Mid Length Sheath Gap Fibre	FTN Access Node	Cabinet Routeworks	Manhole details: Cross-To be used, Filled-In use, Clear-Empty	Pedestrian Access Point	Platform	Sewer	Telecoms
Proposed Fibre & Civils Elements are shown in RED		All Existing Elements are shown in BLACK	Sheath Gap Copper	FTN Access Node with GSM-R Colocated	Fibre Joint Routeworks	Tunnel	Earth Farm	Buffer Stop	Water	Mast
Proposed Copper Elements are shown in BLUE		Existing Fibre Cable								
Proposed Screening Elements are shown in MAGENTA		Existing Copper Cable								
All Recoveries are shown in GREEN		Existing Screen Cable								

Notes

Rev	Date	Description of Revisions	Drawn	Chkd	Appr
B	11/01/13	Stage 2 As-Built	OW	KS	CT
A	24/10/11	Redrafted From 1170-1171-SLD-V1.1.dwg + 1171-1172-SLD-V1.1.dwg	SH	JW	CT

Contractor(s)

Status: **As-Built**

Scale(s): NTS

ELR & Mileage: BAE2

Designed		Sign.		Date	
Drawn	Stephen Holder	Sign.		Date	24/10/2011
Checked	Joe Winter	Sign.		Date	24/10/2011
Approved	Chris Tappenden	Sign.		Date	24/10/2011
Project	FTN/GSM-R Project Stage 2 As-Built				
Drawing Title	The Marshes (1170) to Tisbury (1171) via Tisbury West Xing (6608)				

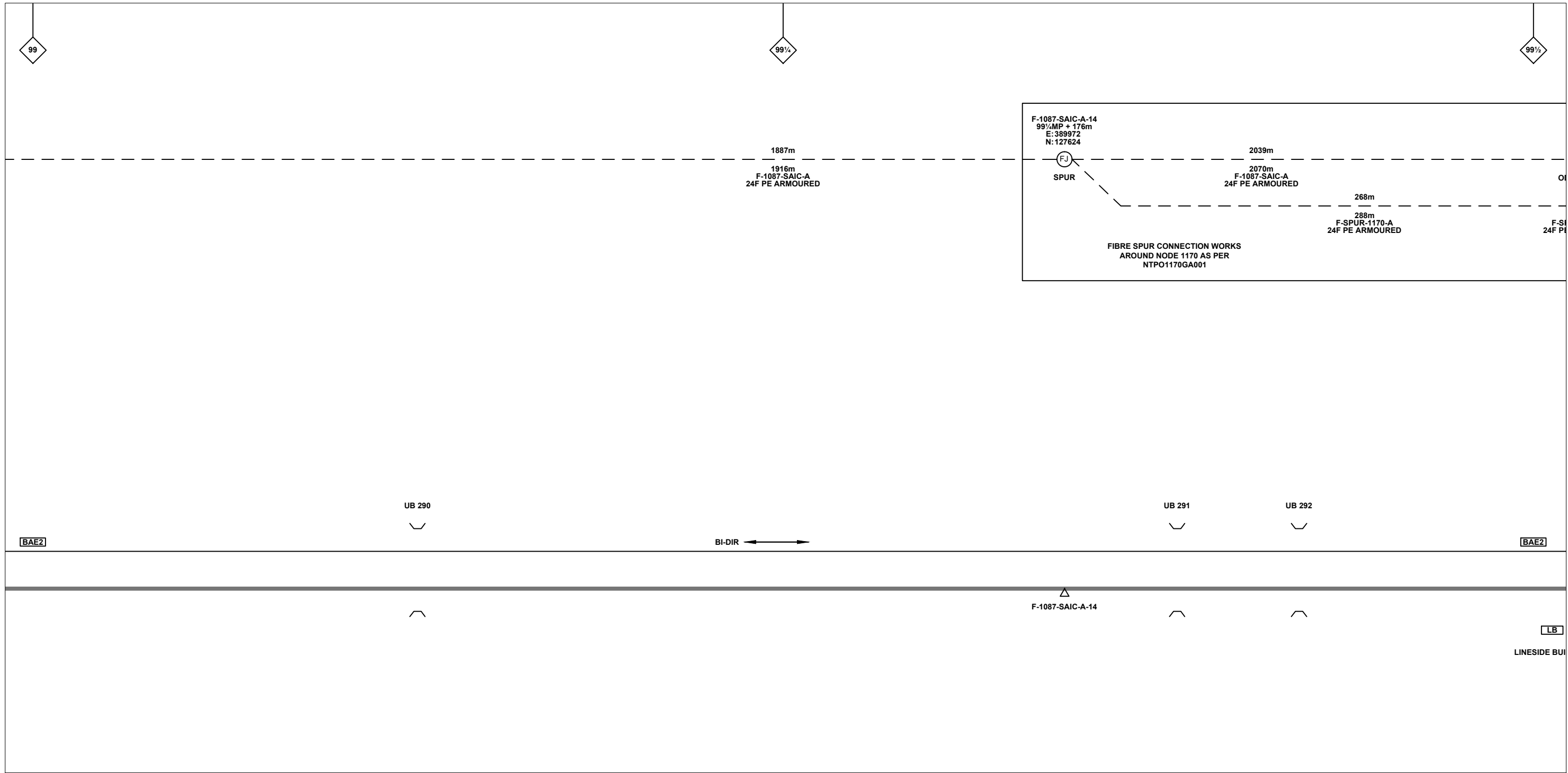
FTN/GSM-R Project  
Tournament House  
Paddington  
London  
W2 1HA

Alternative Reference: See Layout Tab 841 x 297 Sheet 4

Drawing Number: NTPO\SLD\1170\1171\001

Sheet: 8 of 10

Revision: B



**Legend**

Cabinet and Verts	Copper Joint	Trough Duct Cable Tray	Signal Box	FTN Core Node	Screen Joint Routeworks	Overbridge	Signal	Engineer's Line Reference	Crossing	Gas Line
Cabinet with Regenerator and Verts	Fibre Joint	Cable - Type Identified by FTN Code	Electrical Control Room	Core Node with GSM-R Colocated	Copper Joint Routeworks	Manhole	Vehicle Access Point	Mile Post	HV Cable	LV Cable
<b>KEY</b> Proposed Fibre & Civils Elements are shown in RED Proposed Copper Elements are shown in BLUE Proposed Screening Elements are shown in MAGENTA All Recoveries are shown in GREEN	Screening Conductor Joint with/without Earth	Status - as per Key Below	Mid Length Sheath Gap Fibre	FTN Access Node	Cabinet Routeworks	Manhole details: Cross-To be used, Filled-In use, Clear-Empty	Pedestrian Access Point	Platform	Sewer	Telecoms
All Existing Elements are shown in BLACK	Existing Fibre Cable	Existing Copper Cable	Sheath Gap Copper	FTN Access Node with GSM-R Colocated	Fibre Joint Routeworks	Tunnel	Earth Farm	Telephone	Water	Mast

Notes

Rev	Date	Description of Revisions	Drawn	Chkd	Appr
B	11/01/13	Stage 2 As-Built	OW	KS	CT
A	24/10/11	Redrafted From 1170-1171-SLD-V1.1.dwg + 1171-1172-SLD-V1.1.dwg	SH	JW	CT

Contractor(s)

Status: **As-Built**

Scale(s): NTS

ELR & Mileage: BAE2

Designed		Sign.		Date	
Drawn	Stephen Holder	Sign.		Date	24/10/2011
Checked	Joe Winter	Sign.		Date	24/10/2011
Approved	Chris Tappenden	Sign.		Date	24/10/2011
Project	FTN/GSM-R Project Stage 2 As-Built				
Drawing Title	The Marshes (1170) to Tisbury (1171) via Tisbury West Xing (6608)				

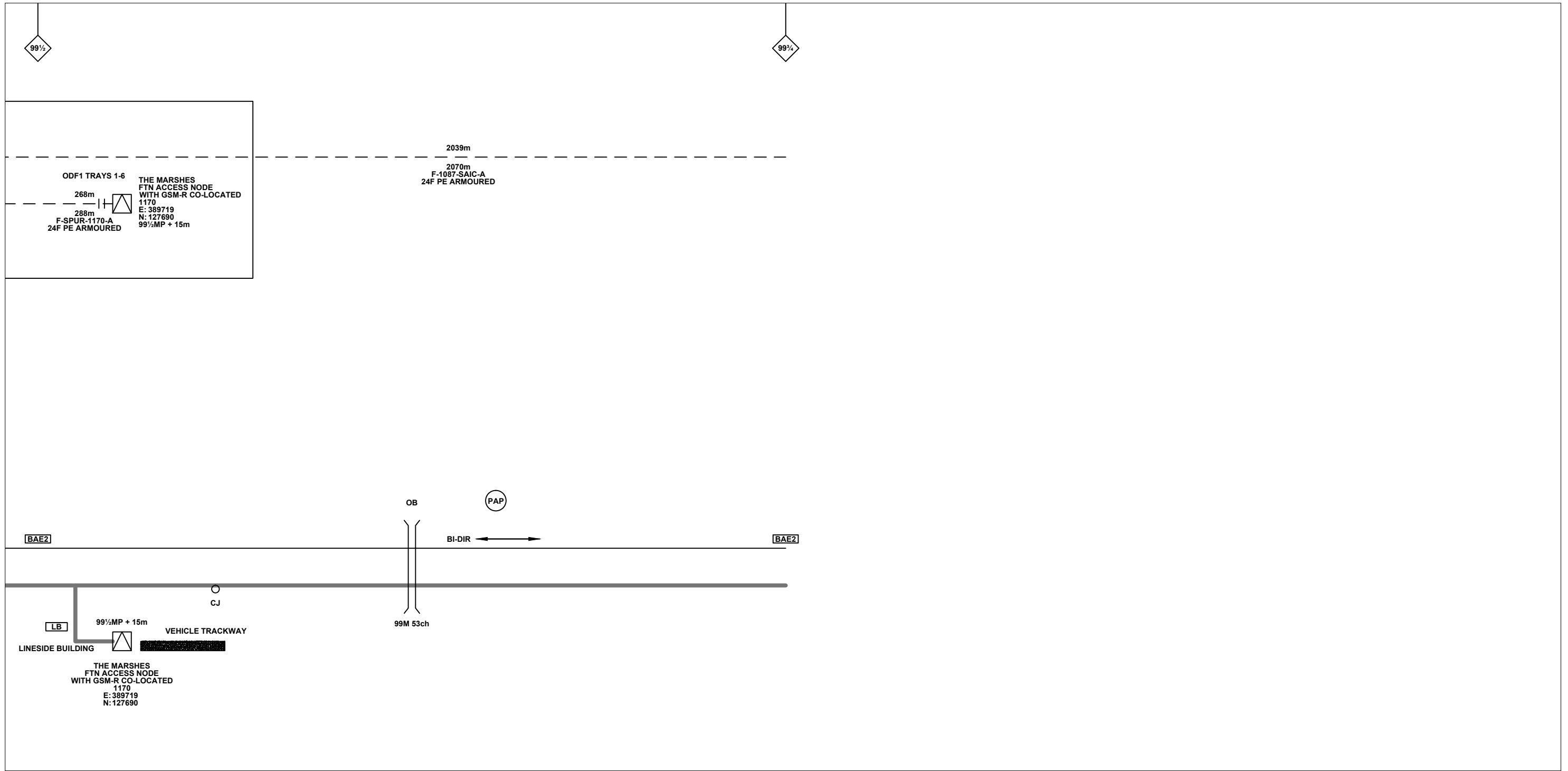
FTN/GSM-R Project  
Tournament House  
Paddington  
London  
W2 1HA

Alternative Reference: See Layout Tab 841 x 297 Sheet 5

Drawing Number: NTPO\SLD\1170\1171\001

Sheet: 9 of 10

Revision: B



**Legend**

Cabinet and Verts	Copper Joint	Trough Duct Cable Tray	Signal Box	FTN Core Node	Screen Joint Routeworks	Overbridge	Signal	Engineer's Line Reference	Crossing	Gas Line
Cabinet with Regenerator and Verts	Fibre Joint	Cable - Type Identified by FTN Code	Electrical Control Room	Core Node with GSM-R Colocated	Copper Joint Routeworks	Underbridge	Vehicle Access Point	Mile Post	HV Cable	LV Cable
<b>KEY</b>	Screening Conductor Joint with/without Earth	Manhole	Mid Length Sheath Gap Fibre	FTN Access Node	Cabinet Routeworks	Manhole details: Cross-To be used, Filled-In use, Clear-Empty	Pedestrian Access Point	Platform	Sewer	Telecoms
Proposed Fibre & Civils Elements are shown in RED		Sheath Gap Copper	FTN Access Node with GSM-R Colocated	Fibre Joint Routeworks	Tunnel	Earth Farm	Buffer Stop	Telephone	Water	Mast
Proposed Copper Elements are shown in BLUE										
Proposed Screening Elements are shown in MAGENTA										
All Recoveries are shown in GREEN										

**Notes**

Contractor(s):

Designed: \_\_\_\_\_ Sign: \_\_\_\_\_ Date: \_\_\_\_\_

Drawn: Stephen Holder Sign: Date: 24/10/2011

Checked: Joe Winter Sign: Date: 24/10/2011

Approved: Chris Tappenden Sign: Date: 24/10/2011

Project: FTN/GSM-R Project Stage 2 As-Built

FTN/GSM-R Project Tournament House Paddington London W2 1HA

Notes		Contractor(s)		Designed		Sign.		Date			
				Stephen Holder				24/10/2011			
				Joe Winter				24/10/2011		FTN/GSM-R Project Tournament House Paddington London W2 1HA	
				Chris Tappenden				24/10/2011			
				Project		FTN/GSM-R Project		Alternative Reference		Sheet	
				Status		As-Built		See Layout Tab 841 x 297 Sheet 5		10 of 10	
				Drawing Title		The Marshes (1170) to Tisbury (1171) via Tisbury West Xing (6608)		Drawing Number		Revision	
				Scale(s)		NTS		NTPO\SLD\1170\1171\001		B	
				ELR & Mileage		BAE2					
				Status		As-Built					
				Scale(s)		NTS					
				ELR & Mileage		BAE2					
				Status		As-Built					
				Scale(s)		NTS					
				ELR & Mileage		BAE2					