

Legend

| | | | | | | | | | | | | | | | | | | | | | | | | | | | | | | | | | | | |
|------------|---|--|--|----------------------|-------------------------------------|-----------------------|-----------------------------------|-----------------------------|--------------------------------|-----------------|--------------------------------------|--------------------|---|--------|-------------|-------------|----------------------|--|-------------------------|--|---------------------------|--|----------|--|-------------|--|-------------|--|-----------|--|--------------|--|----------|--|-------|
| | Cabinet and Verts | | Copper Joint | | Trough Duct Cable Tray | | Signal Box | | FTN Core Node | | Screen Joint Routeworks | | Manhole details: Cross-To be used Filled-In use Clear-Empty | | Overbridge | | Signal | | MLNI | | Engineer's Line Reference | | Crossing | | Gas Line | | HV Cable | | LV Cable | | Sewer | | Telecoms | | Water |
| | Cabinet with Regenerator and Verts | | Fibre Joint | | Cable - Type Identified by FTN Code | | Electrical Control Room | | Core Node with GSM-R Colocated | | Copper Joint Routeworks | | Manhole | | Underbridge | | Vehicle Access Point | | Pedestrian Access Point | | Platform | | Gantry | | Copper Pull | | Copper Blue | | Fibre Red | | Screen Green | | Mast | | |
| KEY | Proposed Fibre & Civils Elements are shown in RED | All Existing Elements are shown in BLACK | Proposed Copper Elements are shown in BLUE | Existing Fibre Cable | Existing Copper Cable | Existing Screen Cable | Manhole Status - as per Key Below | Mid Length Sheath Gap Fibre | Sheath Gap Copper | FTN Access Node | FTN Access Node with GSM-R Colocated | Cabinet Routeworks | Fibre Joint Routeworks | Tunnel | Earth Farm | Buffer Stop | Telephone | | | | | | | | | | | | | | | | | | |

Notes

| | | | | | |
|-----|------------|--|-------|------|------|
| B | 09-01-2013 | Amended by NWR to incorporate final Stage 2 detail | PT | PB | GH |
| AB2 | 23/08/11 | FJ 08 Amended, Electronic Signatures Added, As-Built | AB | DP | PP |
| AB1 | 07/05/10 | As Built | AB | DP | PP |
| A | 24/11/09 | Final Issue | MT | AEL | SW |
| DA | 23/09/08 | 1st Issue | MT | AEL | SW |
| Rev | Date | Description of Revisions | Drawn | Chkd | Appr |

Contractor(s)

As Built

ELR & Mileage
SDP1

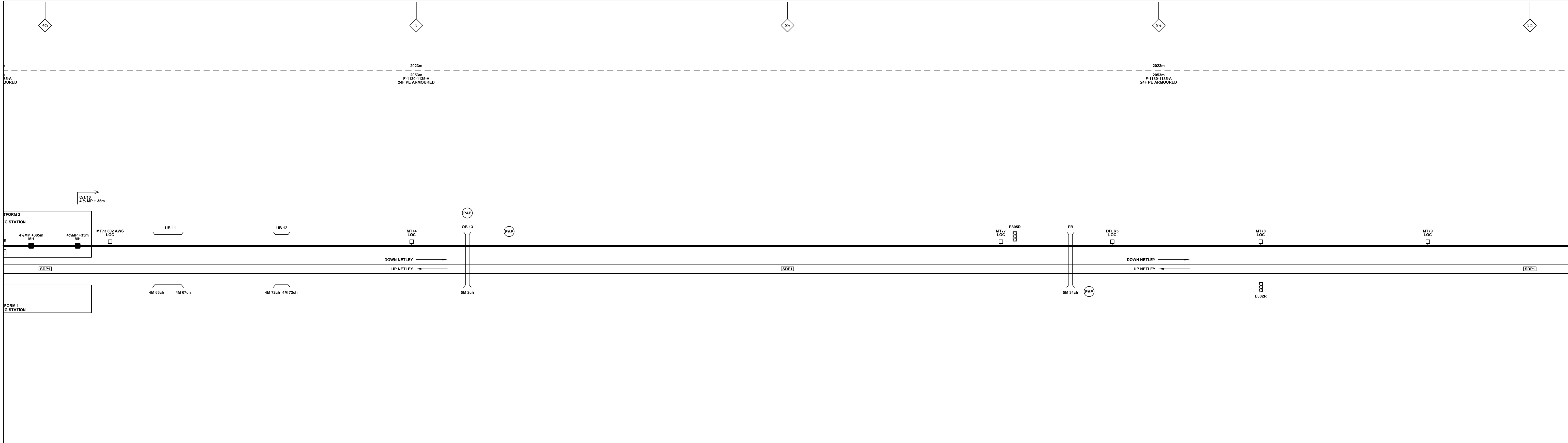
| | | | | |
|---------------|--|-------|------|------------|
| Designed | Andy Bone | Sign. | Date | 23/08/2011 |
| Drawn | Andy Bone | Sign. | Date | 23/08/2011 |
| Checked | Dave Peakman | Sign. | Date | 23/08/2011 |
| Approved | Prakash Patel (C.R.E) | Sign. | Date | 23/08/2011 |
| Project | FTN/GSM-R Project Stage 2 As-Built | | | |
| Drawing Title | Woolston Station (1131) to Bursledon (1132) | | | |

FTN/GSM-R Project
Tournament House
Passington
London
W2 1HA

Alternative Reference
See Layout Tab A3 Sheets 1 and 2

Drawing Number
NTPO\SLD\1131\1132\001

Sheet 1 of 4
Revision B



Legend

| | | | | | | | | | | | | | | | | | | | |
|--|---|-----------------------|--|------|---|----------|-----------------------------|-------|--------------------------------------|----------|-------------------------|-------|---|-------------------|-------------|------------------|-------------------------|------|---------------------------|
| | Cabinet and Verts | | Copper Joint | | Trough Duct Cable Tray | | Signal Box | | FTN Core Node | | Screen Joint Routeworks | | Manhole | | Overbridge | | Signal | | Engineer's Line Reference |
| | Cabinet with Regenerator and Verts | | Fibre Joint | | Cable - Type Identified by FTN Code Status - as per Key Below | | Electrical Control Room | | Core Node with GSM-R Colocated | | Copper Joint Routeworks | | Manhole details: Cross-To be used Filled-In use Clear-Empty | | Underbridge | | Vehicle Access Point | | Mile Post |
| | KEY Proposed Fibre & Civils Elements are shown in RED Proposed Copper Elements are shown in BLUE Proposed Screening Elements are shown in MAGENTA All Recoveries are shown in GREEN | | Screening Conductor Joint with/without Earth | | 1988m Cable | | Mid Length Sheath Gap Fibre | | FTN Access Node | | Cabinet Routeworks | | Tunnel | | Earth Farm | | Pedestrian Access Point | | Platform |
| | | | Existing Fibre Cable | | Existing Copper Cable | | Sheath Gap Copper | | FTN Access Node with GSM-R Colocated | | Fibre Joint Routeworks | | Crossing | | Gantry | | Gas Line | | HV Cable |
| | | Existing Screen Cable | | Gas | | LV Cable | | Sewer | | Telecoms | | Water | | Copper Blue Fibre | | Red Screen Green | | Mast | |
| | | Water | | Mast | | | | | | | | | | | | | | | |

Notes

| Rev | Date | Description of Revisions | Drawn | Chkd | Appr |
|-----|------------|--|-------|------|------|
| B | 09-01-2013 | Amended by NWR to incorporate final Stage 2 detail | PT | PB | GH |
| AB2 | 23/08/11 | FJ 08 Amended, Electronic Signatures Added, As-Built | AB | DP | PP |
| AB1 | 07/05/10 | As Built | AB | DP | PP |
| A | 24/11/09 | Final Issue | MT | AEL | SW |
| DA | 23/09/08 | 1st Issue | MT | AEL | SW |
| Rev | Date | Description of Revisions | Drawn | Chkd | Appr |

Contractor(s)

As Built

ELR & Mileage
SDP1

| | | | | |
|----------|-----------------------|-------|------|------------|
| Designed | Andy Bone | Sign. | Date | 23/08/2011 |
| Drawn | Andy Bone | Sign. | Date | 23/08/2011 |
| Checked | Dave Peakman | Sign. | Date | 23/08/2011 |
| Approved | Prakash Patel (C.R.E) | Sign. | Date | 23/08/2011 |

Project
FTN/GSM-R Project
Stage 2 As-Built

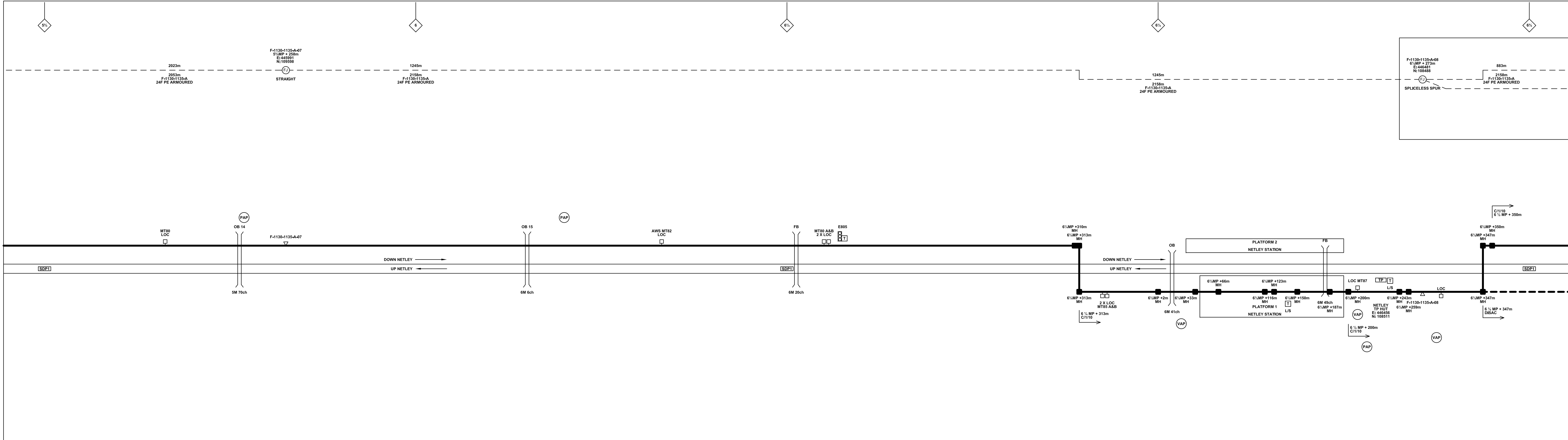
Drawing Title
Woolston Station (1131) to
Bursledon (1132)

FTN/GSM-R Project
Tournament House
Passington
London
W2 1HA

Alternative Reference
See Layout Tab A3 Sheets 3 and 4

Drawing Number
NTPO\SLD\1131\1132\001

Revision
2 of 4
B



Legend

| | | | | | | | | | |
|--|--|-------------------------------------|--------------------------------------|------------------------------------|-------------------------|---|-------------|-------------------------|---------------------------|
| Cabinet and Verts | Copper Joint | Trough Duct Cable Tray | Signal Box | FTN Core Node | Screen Joint Routeworks | Manhole | Overbridge | Signal | Engineer's Line Reference |
| Cabinet with Regenerator and Verts | Fibre Joint | Cable - Type Identified by FTN Code | Electrical Control Room | Core Node with GSM-R Colocated | Copper Joint Routeworks | Manhole details: Cross-To be used Filled-In use Clear-Empty | Underbridge | Vehicle Access Point | Mile Post |
| KEY Proposed Fibre & Civils Elements are shown in RED Proposed Copper Elements are shown in BLUE Proposed Screening Elements are shown in MAGENTA All Recoveries are shown in GREEN | Screening Conductor Joint with/without Earth | Manhole | Mid Length Sheath Gap Fibre | FTN Access Node | Cabinet Routeworks | Tunnel | Earth Farm | Pedestrian Access Point | Platform |
| | Sheath Gap Copper | Fibre Joint Routeworks | FTN Access Node with GSM-R Colocated | Fibre Joint Routeworks | Fibre Joint Routeworks | Buffer Stop | Telephone | Crossing | Gantry |
| | | Cable Pull | | Copper Blue Fibre Red Screen Green | | Mast | | Gas Line | HV Cable |
| | | | | | | | | LV Cable | Sewer |
| | | | | | | | | Telecoms | Water |

Notes

| | | | | | |
|-----|------------|--|-------|------|------|
| B | 09-01-2013 | Amended by NWR to incorporate final Stage 2 detail | PT | PB | GH |
| AB2 | 23/08/11 | FJ 08 Amended, Electronic Signatures Added, As-Built | AB | DP | PP |
| AB1 | 07/05/10 | As Built | AB | DP | PP |
| A | 24/11/09 | Final Issue | MT | AEL | SW |
| DA | 23/09/08 | 1st Issue | MT | AEL | SW |
| Rev | Date | Description of Revisions | Drawn | Chkd | Appr |

Contractor(s)

As Built

ELR & Mileage
SDP1

Scale(s)
NTS

| | | | | |
|----------|-----------------------|-------|------|------------|
| Designed | Andy Bone | Sign. | Date | 23/08/2011 |
| Drawn | Andy Bone | Sign. | Date | 23/08/2011 |
| Checked | Dave Peakman | Sign. | Date | 23/08/2011 |
| Approved | Prakash Patel (C.R.E) | Sign. | Date | 23/08/2011 |

Project
FTN/GSM-R Project
Stage 2 As-Built

Drawing Title
Woolston Station (1131) to
Bursledon (1132)

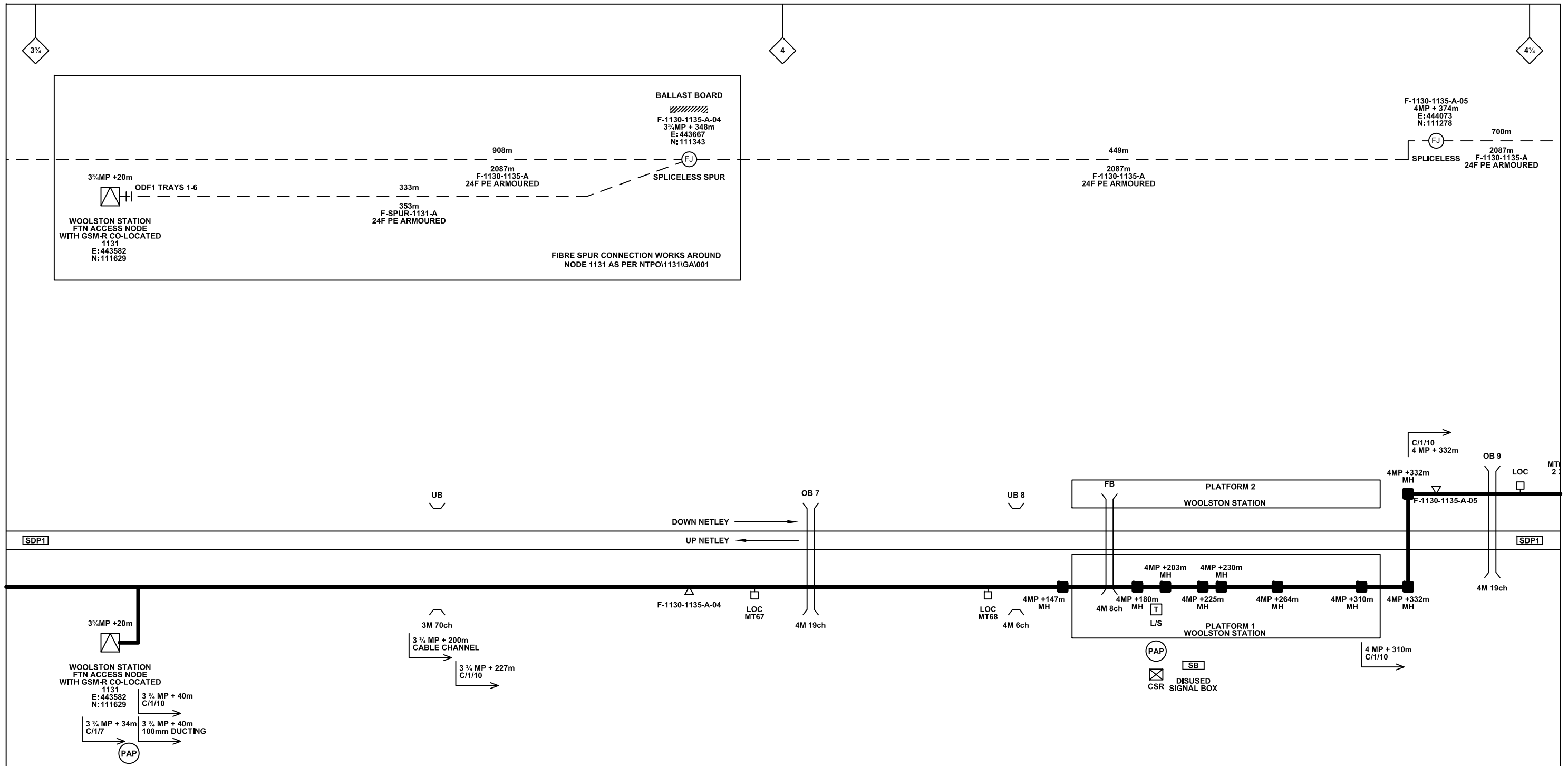
Alternative Reference
See Layout Tab A3 Sheets 5 and 6

Drawing Number
NTPO\SLD\1131\1132\001

Revision
B

Sheet
3 of 4

Sheet Size 841x297



Legend

| | | | | | | | | | | |
|---|--|-------------------------------------|--------------------------------------|--------------------------------|-------------------------|-------------|-------------------------|---------------------------|----------|----------|
| Cabinet and Verts | Copper Joint | Trough Duct Cable Tray | Signal Box | FTN Core Node | Screen Joint Routeworks | Overbridge | Signal | Engineer's Line Reference | Crossing | Gas Line |
| Cabinet with Regenerator and Verts | Fibre Joint | Cable - Type Identified by FTN Code | Electrical Control Room | Core Node with GSM-R Colocated | Copper Joint Routeworks | Underbridge | Vehicle Access Point | Mile Post | HV Cable | LV Cable |
| KEY | Screening Conductor Joint with/without Earth | Manhole | Mid Length Sheath Gap Fibre | FTN Access Node | Cabinet Routeworks | Tunnel | Pedestrian Access Point | Platform | Sewer | Telecoms |
| Proposed Fibre & Civils Elements are shown in RED | All Existing Elements are shown in BLACK | Sheath Gap Copper | FTN Access Node with GSM-R Colocated | Fibre Joint Routeworks | Earth Farm | Buffer Stop | Telephone | Cable Pull | Water | Mast |
| Proposed Copper Elements are shown in BLUE | ----- Existing Fibre Cable | | | | | | | | | |
| Proposed Screening Elements are shown in MAGENTA | ----- Existing Copper Cable | | | | | | | | | |
| All Recoveries are shown in GREEN | ----- Existing Screen Cable | | | | | | | | | |

Notes

| | | | | | |
|-----|------------|--|-------|------|------|
| B | 09-01-2013 | Amended by NWR to incorporate final Stage 2 detail | PT | PB | GH |
| AB2 | 23/08/11 | FJ 08 Amended, Electronic Signatures Added, As-Built | AB | DP | PP |
| AB1 | 07/05/10 | As Built | AB | DP | PP |
| A | 24/11/09 | Final Issue | MT | AEL | SW |
| DA | 23/09/08 | 1st Issue | MT | AEL | SW |
| Rev | Date | Description of Revisions | Drawn | Chkd | Appr |

Contractor(s)

As Built

Scale(s) NTS

ELR & Mileage SDP1

| | | | | |
|---------------|--|-------|------|------------|
| Designed | Andy Bone | Sign. | Date | 23/08/2011 |
| Drawn | Andy Bone | Sign. | Date | 23/08/2011 |
| Checked | Dave Peakman | Sign. | Date | 23/08/2011 |
| Approved | Prakash Patel (C.R.E) | Sign. | Date | 23/08/2011 |
| Project | FTN/GSM-R Project Stage 2 As-Built | | | |
| Drawing Title | Woolston Station (1131) to Bursledon (1132) | | | |

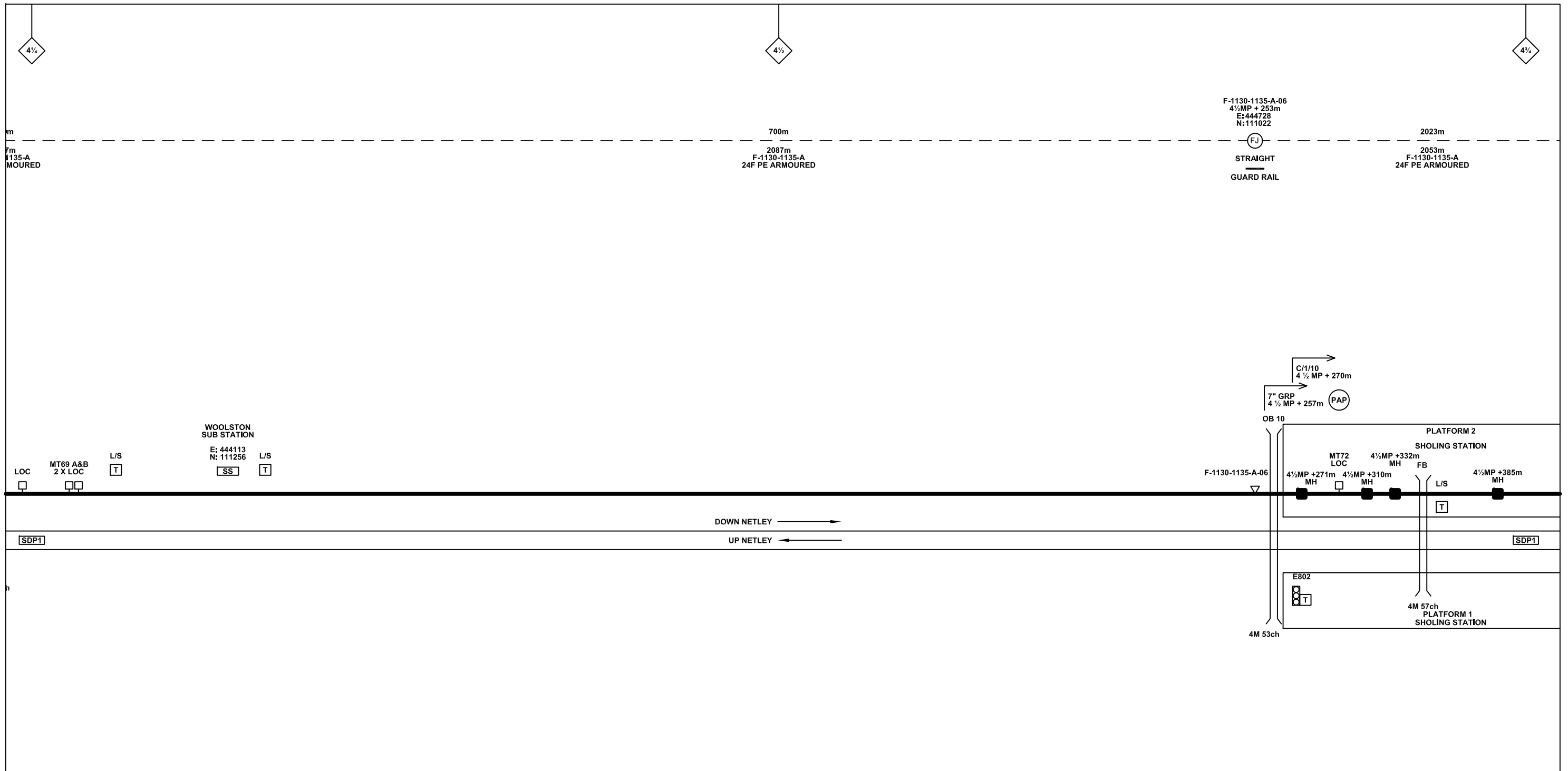
FTN/GSM-R Project
Tournament House
Paddington
London
W2 1HA

Alternative Reference See Layout Tab 841 x 297 Sheet 1

Drawing Number NTPO\SLD\1131\1132\001

Sheet 1 of 7

Revision B



Legend

| | | | | | | | | | | |
|--|--|--------------------------------------|-----------------------------|--------------------------------|-------------------------|-------------|-----------|---------------------------|-------------------------|----------------------------|
| Cabinet and Verts | Copper Joint | Trough Duct Cable Tray | Signal Box | FTN Core Node | Screen Joint Routeworks | Overbridge | Signal | Engineer's Line Reference | Crossing | GAS — GAS — GAS — Gas Line |
| Cabinet with Regenerator and Verts | Fibre Joint | Cable — Type Identified by FTN Code | Electrical Control Room | Core Node with GSM-R Colocated | Copper Joint Routeworks | Underbridge | VAP | Mile Post | HV — HV — HV — HV Cable | LV — LV — LV — LV Cable |
| KEY Proposed Fibre & Civils Elements are shown in RED Proposed Copper Elements are shown in BLUE Proposed Screening Elements are shown in MAGENTA All Recoveries are shown in GREEN | Screening Conductor Joint with/without Earth | Manhole | Mid Length Sheath Gap Fibre | FTN Access Node | Cabinet Routeworks | Tunnel | PAP | Platform | SEW — SEW — SEW — Sewer | W — W — W — Water |
| | Existing Fibre Cable | FTN Access Node with GSM-R Colocated | Sheath Gap Copper | Fibre Joint Routeworks | Earth Farm | Buffer Stop | Telephone | Cable Pull | Mast | |

Notes

| Rev | Date | Description of Revisions | Drawn | Chkd | Appr |
|-----|------------|--|-------|------|------|
| B | 09-01-2013 | Amended by NWR to incorporate final Stage 2 detail | PT | PB | GH |
| AB2 | 23/08/11 | FJ 08 Amended, Electronic Signatures Added, As-Built | AB | DP | PP |
| AB1 | 07/05/10 | As Built | AB | DP | PP |
| A | 24/11/09 | Final Issue | MT | AEL | SW |
| DA | 23/09/08 | 1st Issue | MT | AEL | SW |

Contractor(s)

Status: **As Built**

Scale(s): NTS

ELR & Mileage: SDP1

| | | | | |
|---------------|---|-------|------|------------|
| Designed | Andy Bone | Sign. | Date | 23/08/2011 |
| Drawn | Andy Bone | Sign. | Date | 23/08/2011 |
| Checked | Dave Peakman | Sign. | Date | 23/08/2011 |
| Approved | Prakash Patel (C.R.E) | Sign. | Date | 23/08/2011 |
| Project | FTN/GSM-R Project Stage 2 As-Built | | | |
| Drawing Title | Woolston Station (1131) to Bursledon (1132) | | | |

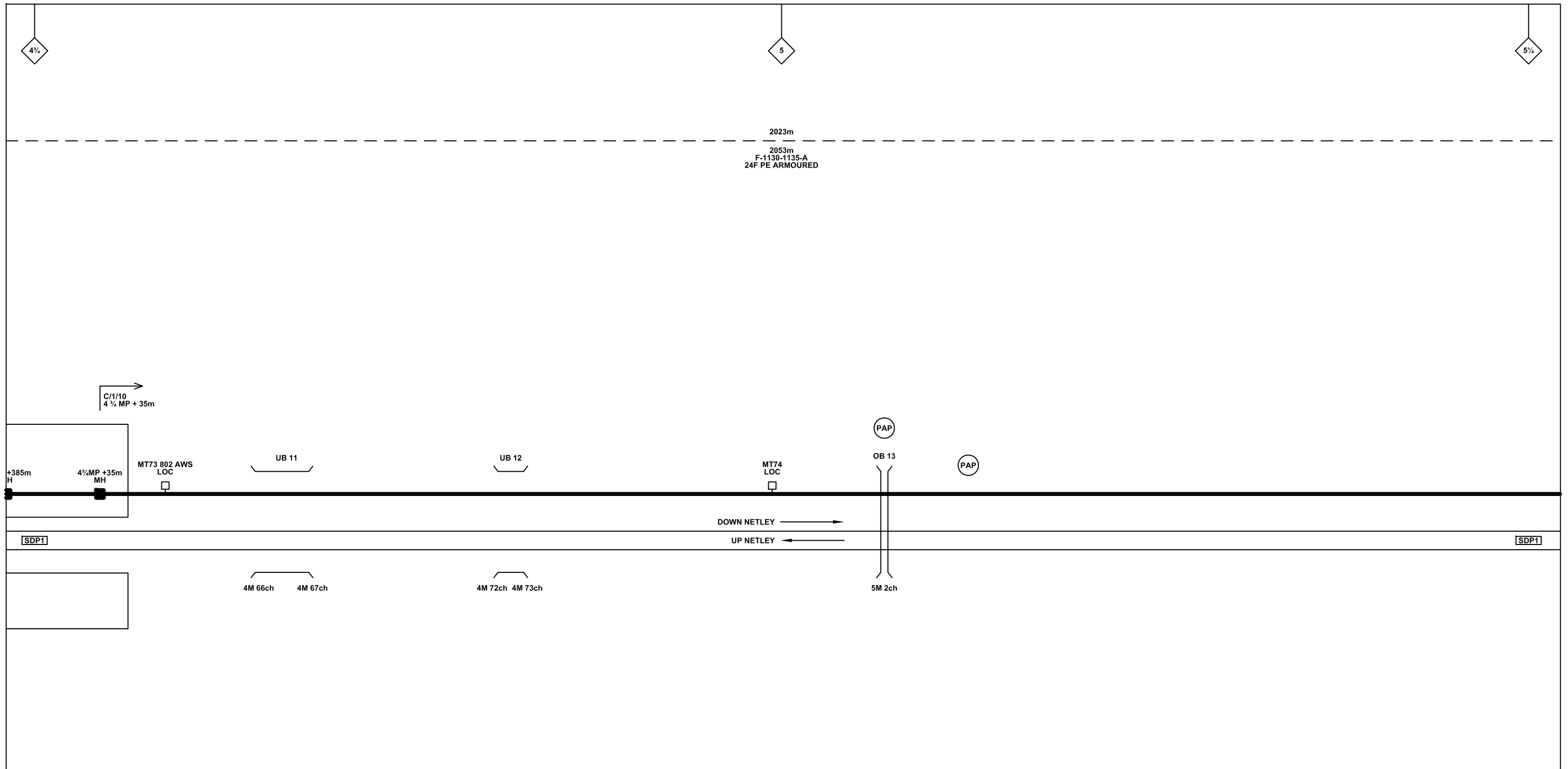
FTN/GSM-R Project
Tournament House
London
W2 1HA

Alternative Reference: See Layout Tab 841 x 297 Sheet 1

Drawing Number: NTPO\SLD\1131\1132\001

Sheet: 2 of 7

Revision: B



Legend

| | | | | | | | | | | |
|--|--|-------------------------------------|-----------------------------|--------------------------------------|-------------------------|---|-------------------------|---------------------------|-------------------------|----------------------------|
| Cabinet and Verts | Copper Joint | Trough Duct Cable Tray | Signal Box | FTN Core Node | Screen Joint Routeworks | Overbridge | Signal | Engineer's Line Reference | Crossing | GAS — GAS — GAS — Gas Line |
| Cabinet with Regenerator and Verts | Fibre Joint | Cable - Type Identified by FTN Code | Electrical Control Room | Core Node with GSM-R Colocated | Copper Joint Routeworks | Underbridge | Vehicle Access Point | Mile Post | HV — HV — HV — HV Cable | LV — LV — LV — LV Cable |
| KEY Proposed Fibre & Civils Elements are shown in RED Proposed Copper Elements are shown in BLUE Proposed Screening Elements are shown in MAGENTA All Recoveries are shown in GREEN | Screening Conductor Joint with/without Earth | Status - as per Key Below | Manhole | FTN Access Node | Cabinet Routeworks | Manhole details: Cross-To be used, Filled-In use, Clear-Empty | Pedestrian Access Point | Platform | SEW — SEW — SEW — Sewer | TEL — TEL — TEL — Telecoms |
| All Existing Elements are shown in BLACK | Existing Fibre Cable | Existing Copper Cable | Mid Length Sheath Gap Fibre | FTN Access Node with GSM-R Colocated | Fibre Joint Routeworks | Tunnel | Earth Farm | Buffer Stop | v — v — v — Water | Mast |

Notes

| Rev | Date | Description of Revisions | Drawn | Chkd | Appr |
|-----|------------|--|-------|------|------|
| B | 09-01-2013 | Amended by NWR to incorporate final Stage 2 detail | PT | PB | GH |
| AB2 | 23/08/11 | FJ 08 Amended, Electronic Signatures Added, As-Built | AB | DP | PP |
| AB1 | 07/05/10 | As Built | AB | DP | PP |
| A | 24/11/09 | Final Issue | MT | AEL | SW |
| DA | 23/09/08 | 1st Issue | MT | AEL | SW |

Contractor(s)

Status: **As Built**

Scale(s): NTS

ELR & Mileage: SDP1

| | | | | |
|---------------|---|-------|------|------------|
| Designed | Andy Bone | Sign. | Date | 23/08/2011 |
| Drawn | Andy Bone | Sign. | Date | 23/08/2011 |
| Checked | Dave Peakman | Sign. | Date | 23/08/2011 |
| Approved | Prakash Patel (C.R.E) | Sign. | Date | 23/08/2011 |
| Project | FTN/GSM-R Project Stage 2 As-Built | | | |
| Drawing Title | Woolston Station (1131) to Bursledon (1132) | | | |

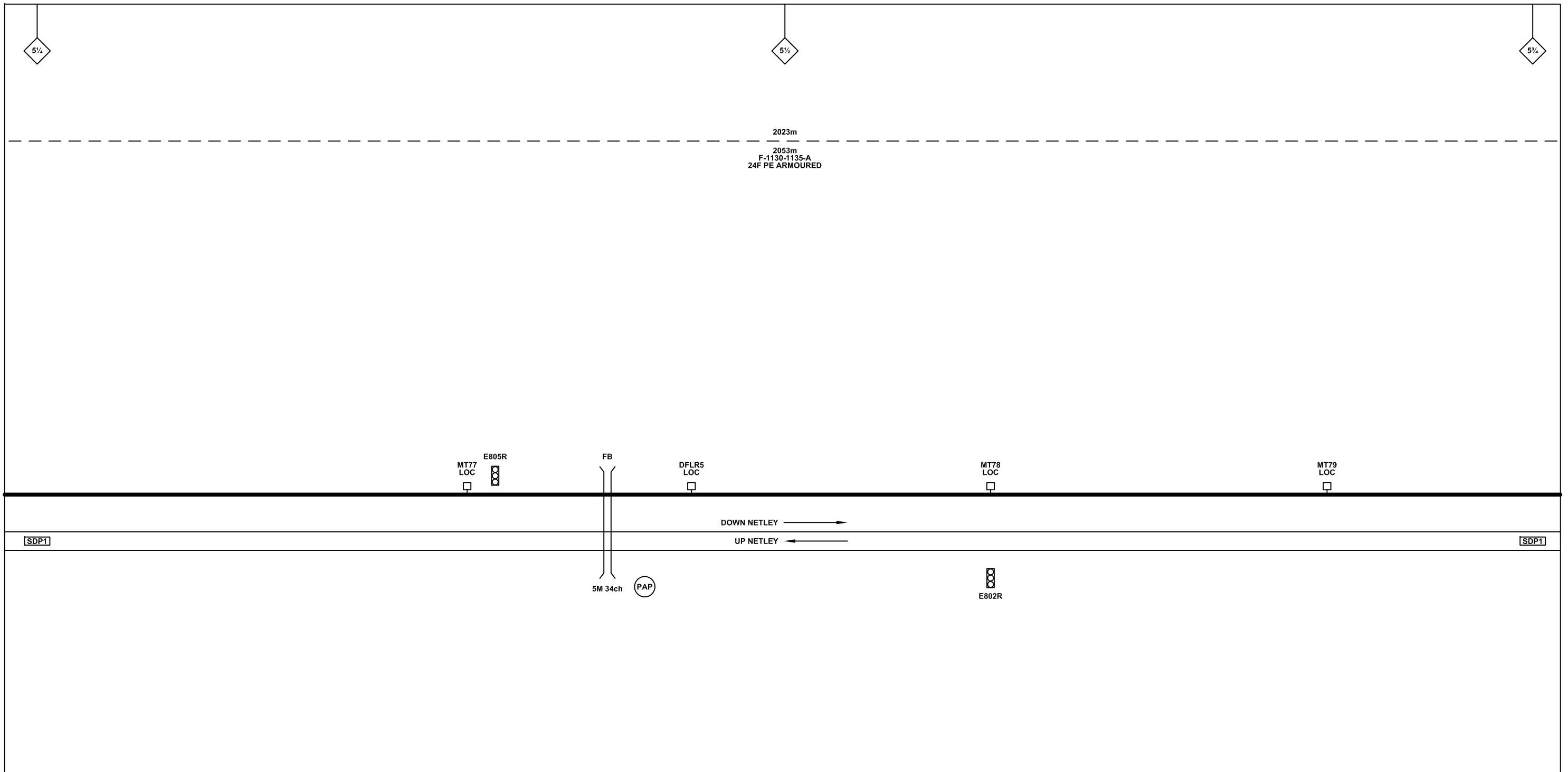
FTN/GSM-R Project
Tournament House
Paddington
London
W2 1HA

Alternative Reference: See Layout Tab 841 x 297 Sheet 2

Drawing Number: NTPO\SLD\1131\1132\001

Sheet: 3 of 7

Revision: B



Legend

| | | | | | | | | | | |
|--|--|-------------------------------------|-----------------------------|--------------------------------------|-------------------------|---|-------------------------|---------------------------|----------|----------|
| Cabinet and Verts | Copper Joint | Trough Duct Cable Tray | Signal Box | FTN Core Node | Screen Joint Routeworks | Overbridge | Signal | Engineer's Line Reference | Crossing | Gas Line |
| Cabinet with Regenerator and Verts | Fibre Joint | Cable - Type Identified by FTN Code | Electrical Control Room | Core Node with GSM-R Colocated | Copper Joint Routeworks | Manhole | Vehicle Access Point | Mile Post | HV Cable | LV Cable |
| KEY Proposed Fibre & Civils Elements are shown in RED Proposed Copper Elements are shown in BLUE Proposed Screening Elements are shown in MAGENTA All Recoveries are shown in GREEN | Screening Conductor Joint with/without Earth | Status - as per Key Below | Mid Length Sheath Gap Fibre | FTN Access Node | Cabinet Routeworks | Manhole details: Cross-To be used, Filled-In use, Clear-Empty | Pedestrian Access Point | Platform | Sewer | Telecoms |
| | Existing Fibre Cable | Existing Copper Cable | Sheath Gap Copper | FTN Access Node with GSM-R Colocated | Fibre Joint Routeworks | Tunnel | Earth Farm | Gantry | Water | Mast |

| Rev | Date | Description of Revisions | Drawn | Chkd | Appr |
|-----|------------|--|-------|------|------|
| B | 09-01-2013 | Amended by NWR to incorporate final Stage 2 detail | PT | PB | GH |
| AB2 | 23/08/11 | FJ 08 Amended, Electronic Signatures Added, As-Built | AB | DP | PP |
| AB1 | 07/05/10 | As Built | AB | DP | PP |
| A | 24/11/09 | Final Issue | MT | AEL | SW |
| DA | 23/09/08 | 1st Issue | MT | AEL | SW |

Contractor(s)

Status: **As Built**

Scale(s): NTS

ELR & Mileage: SDP1

| | | | | |
|---------------|---|-------|------|------------|
| Designed | Andy Bone | Sign. | Date | 23/08/2011 |
| Drawn | Andy Bone | Sign. | Date | 23/08/2011 |
| Checked | Dave Peakman | Sign. | Date | 23/08/2011 |
| Approved | Prakash Patel (C.R.E) | Sign. | Date | 23/08/2011 |
| Project | FTN/GSM-R Project Stage 2 As-Built | | | |
| Drawing Title | Woolston Station (1131) to Bursledon (1132) | | | |

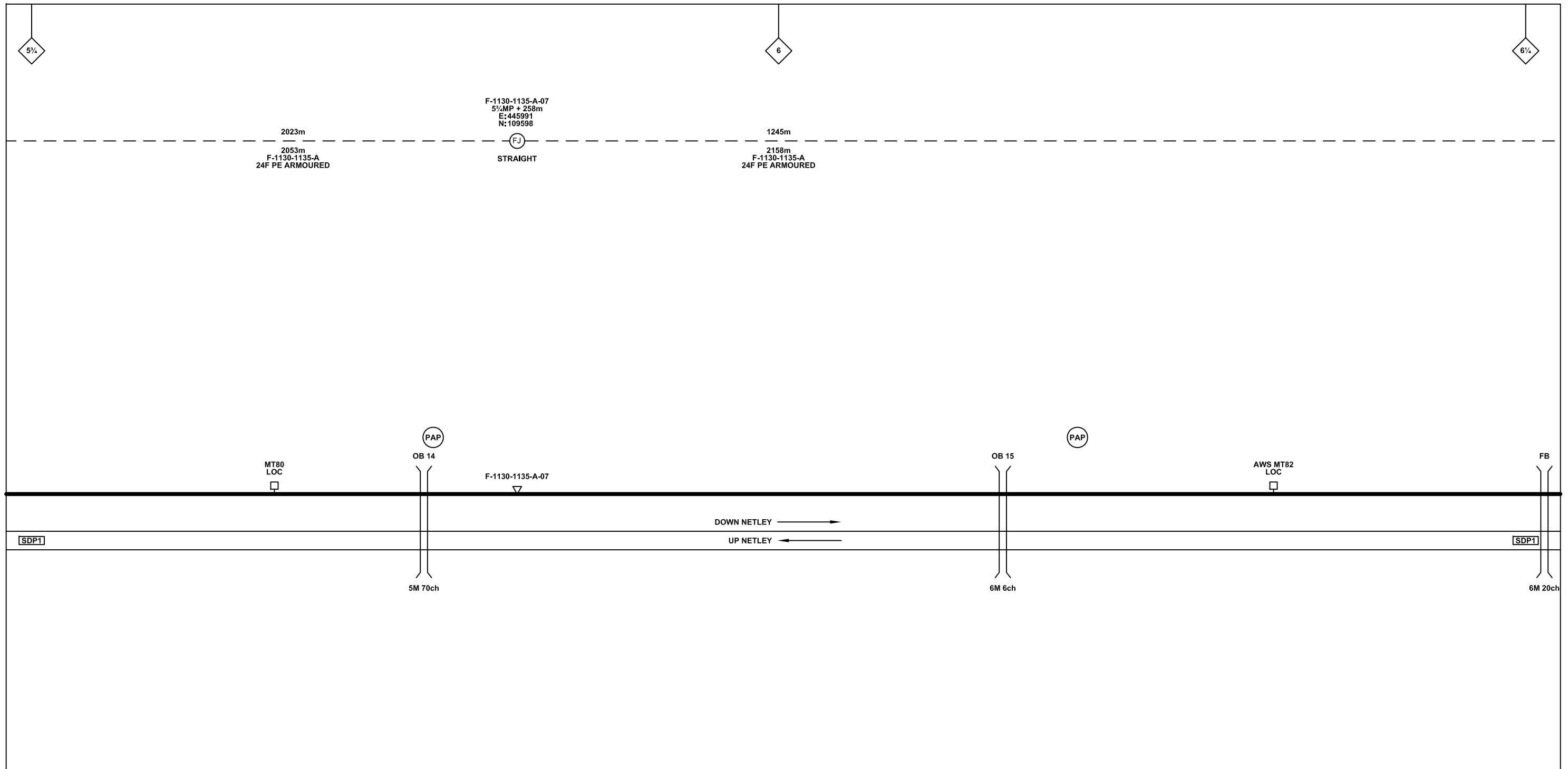
FTN/GSM-R Project
Tournament House
Paddington
London
W2 1HA

Alternative Reference: See Layout Tab 841 x 297 Sheet 2

Drawing Number: NTPO\SLD\1131\1132\001

Sheet: 4 of 7

Revision: B



Legend

| | | | | | | | | | | |
|--|--|-------------------------------------|-----------------------------|--------------------------------------|-------------------------|---|-------------------------|---------------------------|----------|----------|
| Cabinet and Verts | Copper Joint | Trough Duct Cable Tray | Signal Box | FTN Core Node | Screen Joint Routeworks | Overbridge | Signal | Engineer's Line Reference | Crossing | Gas Line |
| Cabinet with Regenerator and Verts | Fibre Joint | Cable - Type Identified by FTN Code | Electrical Control Room | Core Node with GSM-R Colocated | Copper Joint Routeworks | Underbridge | Vehicle Access Point | Mile Post | HV Cable | LV Cable |
| KEY Proposed Fibre & Civils Elements are shown in RED Proposed Copper Elements are shown in BLUE Proposed Screening Elements are shown in MAGENTA All Recoveries are shown in GREEN | Screening Conductor Joint with/without Earth | Status - as per Key Below | Manhole | FTN Access Node | Cabinet Routeworks | Manhole details: Cross-To be used, Filled-In use, Clear-Empty | Pedestrian Access Point | Platform | Sewer | Telecoms |
| | | Existing Fibre Cable | Mid Length Sheath Gap Fibre | FTN Access Node with GSM-R Colocated | Fibre Joint Routeworks | Tunnel | Earth Farm | Buffer Stop | Water | Mast |
| | | Existing Copper Cable | Sheath Gap Copper | | | | | Telephone | | |
| | | Existing Screen Cable | | | | | | | | |

Notes

| | | | | | |
|-----|------------|--|-------|------|------|
| Rev | Date | Description of Revisions | Drawn | Chkd | Appr |
| B | 09-01-2013 | Amended by NWR to incorporate final Stage 2 detail | PT | PB | GH |
| AB2 | 23/08/11 | FJ 08 Amended, Electronic Signatures Added, As-Built | AB | DP | PP |
| AB1 | 07/05/10 | As Built | AB | DP | PP |
| A | 24/11/09 | Final Issue | MT | AEL | SW |
| DA | 23/09/08 | 1st Issue | MT | AEL | SW |

Contractor(s)

Status: **As Built**

Scale(s): NTS

ELR & Mileage: SDP1

| | | | | |
|---------------|---|-------|------|------------|
| Designed | Andy Bone | Sign. | Date | 23/08/2011 |
| Drawn | Andy Bone | Sign. | Date | 23/08/2011 |
| Checked | Dave Peakman | Sign. | Date | 23/08/2011 |
| Approved | Prakash Patel (C.R.E) | Sign. | Date | 23/08/2011 |
| Project | FTN/GSM-R Project Stage 2 As-Built | | | |
| Drawing Title | Woolston Station (1131) to Bursledon (1132) | | | |

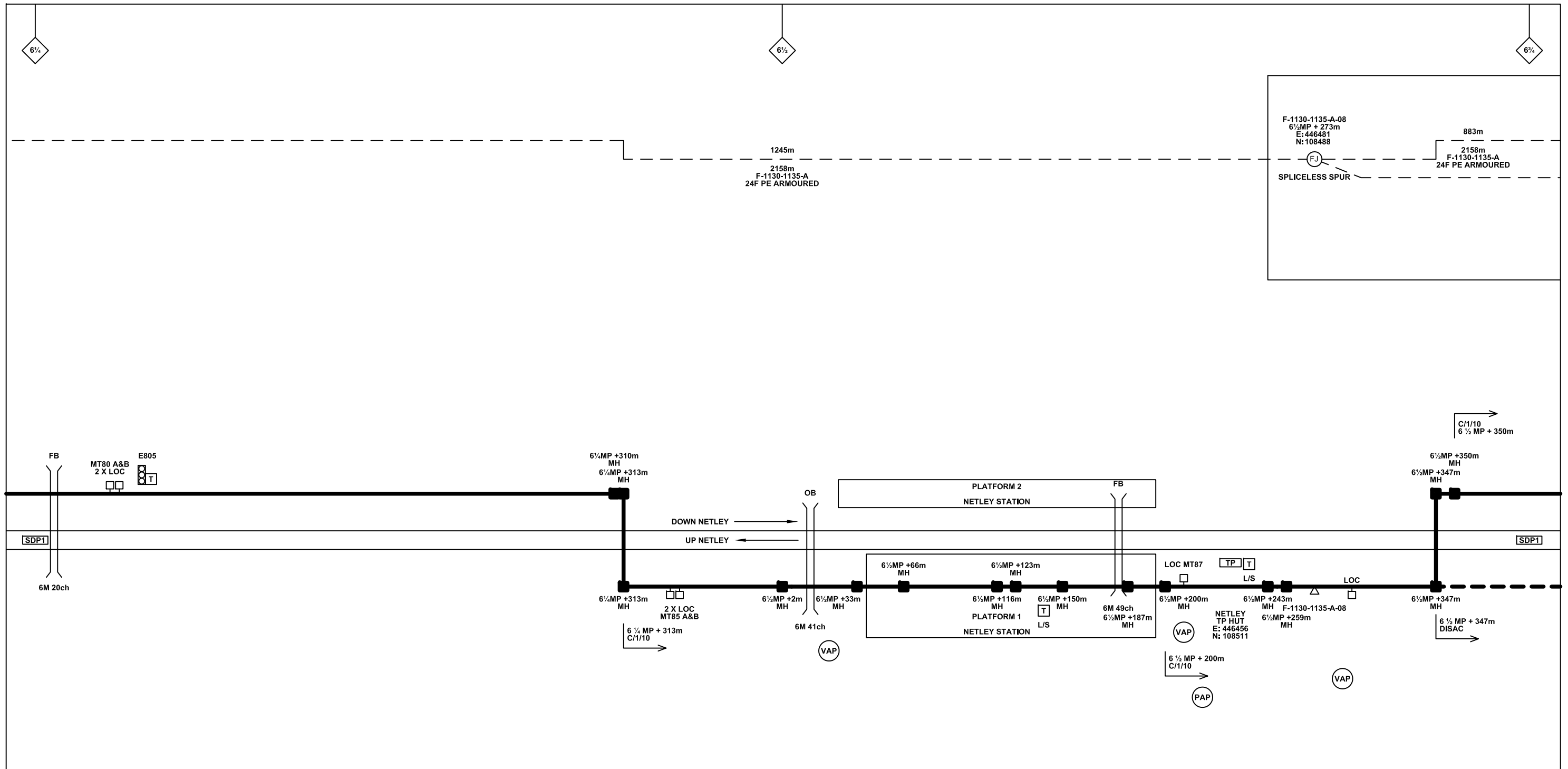
FTN/GSM-R Project
Tournament House
Paddington
London
W2 1HA

Alternative Reference: See Layout Tab 841 x 297 Sheet 3

Drawing Number: NTPO\SLD\1131\1132\001

Sheet: 5 of 7

Revision: B



Legend

| | | | | | | | | | | |
|--|--|-------------------------------------|-----------------------------|--------------------------------------|-------------------------|---|-------------------------|---------------------------|--------------------|----------------------|
| Cabinet and Verts | Copper Joint | Trough Duct Cable Tray | Signal Box | FTN Core Node | Screen Joint Routeworks | Overbridge | Signal | Engineer's Line Reference | Crossing | GAS — GAS — Gas Line |
| Cabinet with Regenerator and Verts | Fibre Joint | Cable - Type Identified by FTN Code | Electrical Control Room | Core Node with GSM-R Colocated | Copper Joint Routeworks | Underbridge | Vehicle Access Point | Mile Post | HV — HV — HV Cable | LV — LV — LV Cable |
| KEY Proposed Fibre & Civils Elements are shown in RED Proposed Copper Elements are shown in BLUE Proposed Screening Elements are shown in MAGENTA All Recoveries are shown in GREEN | Screening Conductor Joint with/without Earth | Status - as per Key Below | Manhole | FTN Access Node | Cabinet Routeworks | Manhole details: Cross-To be used, Filled-In use, Clear-Empty | Pedestrian Access Point | Platform | SEW — SEW — Sewer | TEL — TEL — Telecoms |
| All Existing Elements are shown in BLACK | Existing Fibre Cable | Existing Copper Cable | Mid Length Sheath Gap Fibre | FTN Access Node with GSM-R Colocated | Fibre Joint Routeworks | Tunnel | Earth Farm | Buffer Stop | W — W — Water | Mast |

Notes

| | | | | | |
|-----|------------|--|-------|------|------|
| B | 09-01-2013 | Amended by NWR to incorporate final Stage 2 detail | PT | PB | GH |
| AB2 | 23/08/11 | FJ 08 Amended, Electronic Signatures Added, As-Built | AB | DP | PP |
| AB1 | 07/05/10 | As Built | AB | DP | PP |
| A | 24/11/09 | Final Issue | MT | AEL | SW |
| DA | 23/09/08 | 1st Issue | MT | AEL | SW |
| Rev | Date | Description of Revisions | Drawn | Chkd | Appr |

Contractor(s)

bam nuttall

Status: **As Built**

Scale(s): NTS

ELR & Mileage: SDP1

| | | | | |
|---------------|--|-------|------|------------|
| Designed | Andy Bone | Sign. | Date | 23/08/2011 |
| Drawn | Andy Bone | Sign. | Date | 23/08/2011 |
| Checked | Dave Peakman | Sign. | Date | 23/08/2011 |
| Approved | Prakash Patel (C.R.E) | Sign. | Date | 23/08/2011 |
| Project | FTN/GSM-R Project Stage 2 As-Built | | | |
| Drawing Title | Woolston Station (1131) to Bursledon (1132) | | | |

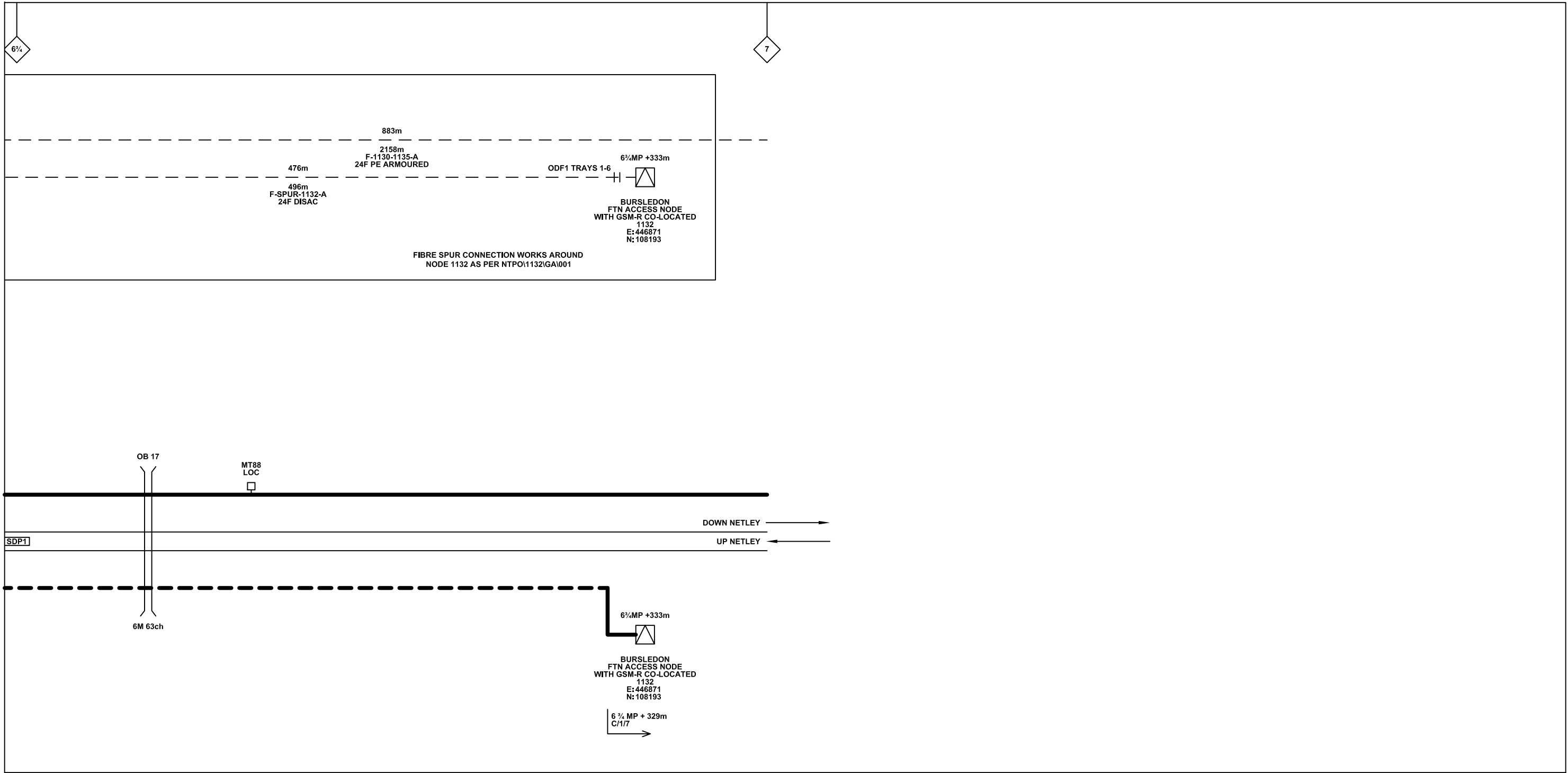
FTN/GSM-R Project
Tournament House
Paddington
London
W2 1HA

Alternative Reference: See Layout Tab 841 x 297 Sheet 3

Drawing Number: NTPO\SLD\1131\1132\001

Sheet: 6 of 7

Revision: B



Legend

| | | | | | | | | | | |
|--|--|-------------------------------------|-----------------------------|--------------------------------------|-------------------------|---|-----------------------------|---------------------------|-------------------|------------------------------------|
| Cabinet and Verts | Copper Joint | Trough Duct Cable Tray | Signal Box | FTN Core Node | Screen Joint Routeworks | Overbridge | Signal | Engineer's Line Reference | Crossing | GAS — GAS — Gas Line |
| Cabinet with Regenerator and Verts | Fibre Joint | Cable - Type Identified by FTN Code | Electrical Control Room | Core Node with GSM-R Colocated | Copper Joint Routeworks | Underbridge | VAP Vehicle Access Point | Mile Post | Gantry | HV — HV — HV Cable |
| KEY Proposed Fibre & Civils Elements are shown in RED Proposed Copper Elements are shown in BLUE Proposed Screening Elements are shown in MAGENTA All Recoveries are shown in GREEN | Screening Conductor Joint with/without Earth | Status - as per Key Below | Manhole | FTN Access Node | Cabinet Routeworks | Manhole details: Cross-To be used, Filled-In use, Clear-Empty | PAP Pedestrian Access Point | Platform | SEW — SEW — Sewer | W — W — Water |
| | | Existing Fibre Cable | Mid Length Sheath Gap Fibre | FTN Access Node with GSM-R Colocated | Fibre Joint Routeworks | Tunnel | Earth Farm | Telephone | Buffer Stop | Copper Blue Fibre Red Screen Green |
| | | Existing Copper Cable | Sheath Gap Copper | | | | | | | Mast |

Notes

| Rev | Date | Description of Revisions | Drawn | Chkd | Appr |
|-----|------------|--|-------|------|------|
| B | 09-01-2013 | Amended by NWR to incorporate final Stage 2 detail | PT | PB | GH |
| AB2 | 23/08/11 | FJ 08 Amended, Electronic Signatures Added, As-Built | AB | DP | PP |
| AB1 | 07/05/10 | As Built | AB | DP | PP |
| A | 24/11/09 | Final Issue | MT | AEL | SW |
| DA | 23/09/08 | 1st Issue | MT | AEL | SW |

Contractor(s)

bam nuttall

Status: **As Built**

Scale(s): NTS

ELR & Mileage: SDP1

| | | | | | |
|---------------|--|-------|--|------|------------|
| Designed | Andy Bone | Sign. | | Date | 23/08/2011 |
| Drawn | Andy Bone | Sign. | | Date | 23/08/2011 |
| Checked | Dave Peakman | Sign. | | Date | 23/08/2011 |
| Approved | Prakash Patel (C.R.E) | Sign. | | Date | 23/08/2011 |
| Project | FTN/GSM-R Project Stage 2 As-Built | | | | |
| Drawing Title | Woolston Station (1131) to Bursledon (1132) | | | | |

FTN/GSM-R Project
Tournament House
Paddington
London
W2 1HA

Alternative Reference: See Layout Tab 841 x 297 Sheet 4

Drawing Number: NTPO\SLD\1131\1132\001

Sheet: 7 of 7

Revision: B