

Legend

KEY												
Proposed Fibre & Civils Elements are shown in RED												
Proposed Copper Elements are shown in BLUE												
Proposed Screening Elements are shown in MAGENTA												
All Recoveries are shown in GREEN												

Notes

Rev	Date	Description of Revisions	Drawn	Chkd	Appr
C	31/01/13	As Built	RM	JH	IA
B	04.01.11	Amends as per NWR Design Review	DA	JW	CT
A	17.11.10	Redrafted from MAYA-WPDA As-built SLD.dwg	MB	JW	CT

Linbrooke
Total Network Solutions

As Built

ELR & Mileage: WPH1

Scale(s): NTS

Designed	Sign.	Date
Drawn	Mike Bonner	17.11.10
Checked	Joe Winter	17.11.10
Approved	Chris Tappenden	17.11.10

FTN / GSM-R Project Stage 2

Mayford (LDT) (MAYA) to Worpleston LDT (WPDA)

Network Rail

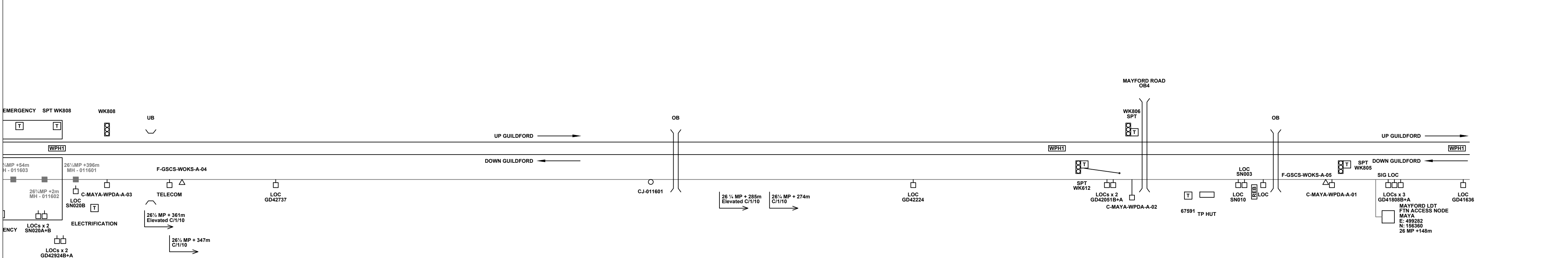
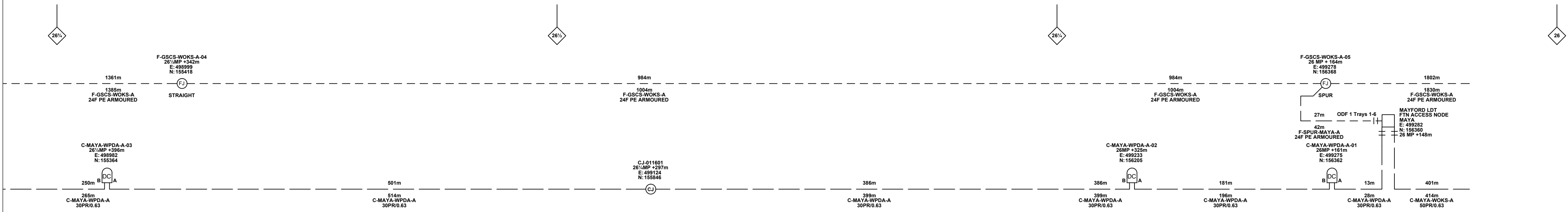
FTN/GSM-R Project
Tournament House
Paddington
London
W2 1HA

Alternative Reference: See Layout Tab A3 Sheets 1 and 2

Drawing Number: NTPOSOLDMAYAWPDA001

Sheet: 1 of 2
Revision: C

Project: FTN / GSM-R Project Stage 2



Legend

Cabinet and Verts	Copper Joint	Trough Duct Cable Tray	Signal Box	FTN Core Node	Screen Joint Routeworks	Manhole details: Cross-To be used Filled-In use Clear-Empty	Overbridge	Signal	MLNT	Engineer's Line Reference	Crossing	GAS — GAS — Gas Line	
Cabinet with Regenerator and Verts	Fibre Joint	Cable - Type Identified by FTN Code	Electrical Control Room	Core Node with GSM-R Colocated	Copper Joint Routeworks	Manhole	Underbridge	Vehicle Access Point	Mile Post	Gantry	HV — HV — HV Cable	SEW — SEW — Sewer	
KEY	Screening Conductor Joint with/without Earth	Status - as per Key Below	Mid Length Sheath Gap Fibre	FTN Access Node	Cabinet Routeworks	Manhole with Sheath Gap Copper	Pedestrian Access Point	Platform	Cable Pull	W — W — Water	TEL — TEL — Telecoms	AC Stanchion	
Proposed Fibre & Civils Elements are shown in RED	All Existing Elements are shown in BLACK	Existing Fibre Cable	Existing Copper Cable	Existing Screen Cable	Existing Fibre Cable	Existing Copper Cable	Existing Screen Cable	Existing Fibre Cable	Existing Copper Cable	Existing Screen Cable	Existing Fibre Cable	Existing Copper Cable	Existing Screen Cable

Notes

C	31/01/13	As Built	RM	JH	IA
B	04.01.11	Amends as per NWR Design Review	DA	JW	CT
A	17.11.10	Redrafted from MAYA-WPDA As-built SLD.dwg	MB	JW	CT
Rev	Date	Description of Revisions	Drawn	Chkd	Appr

Linbrooke
Total Network Solutions

As Built

ELR & Mileage: WPH1

Designed	Sign.	Date
Drawn	Sign.	Date 17.11.10
Checked	Sign.	Date 17.11.10
Approved	Sign.	Date 17.11.10
Project	FTN / GSM-R Project Stage 2	
Drawing Title	Mayford (LDT) (MAYA) to Worplesdon LDT (WPDA)	

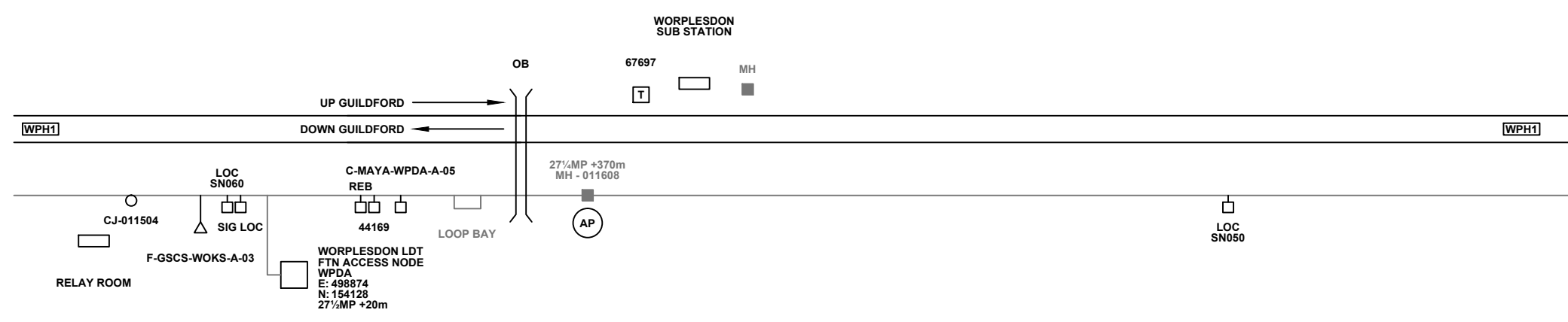
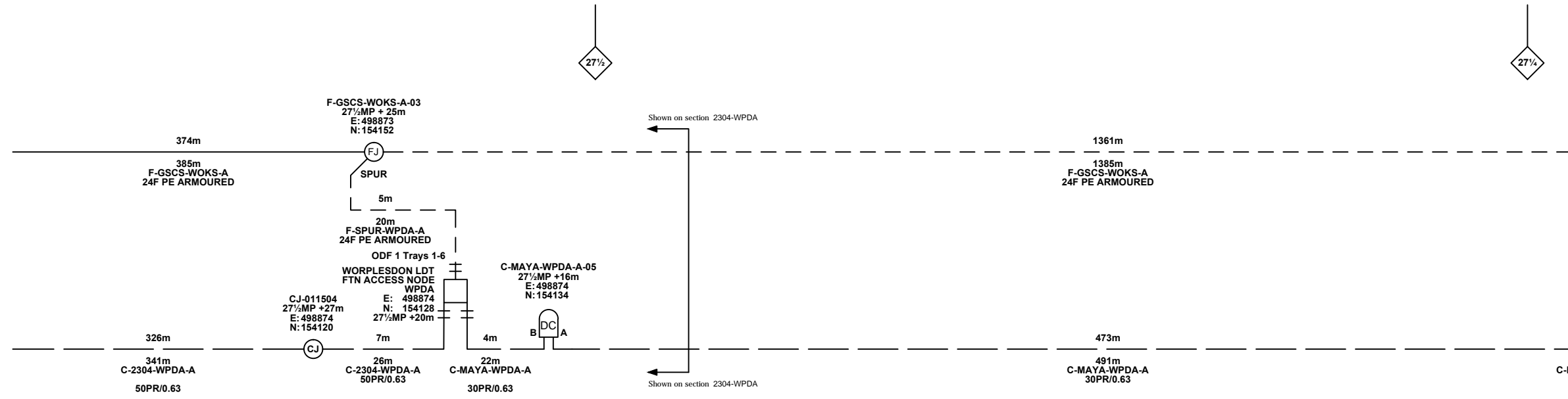
Network Rail

FTN/GSM-R Project
Tournament House
Paddington
London
W2 1HA

Alternative Reference: See Layout Tab A3 Sheets 3 and 4

Drawing Number: NTPOSOLDMAYAWPDA001

Sheet: 2 of 2
Revision: C



MAYA to WPDA Intermediate Works Bill of Quantities			
7.328	Remove Redundant Installed Cable	metre	144
7.344	Renumber DC cabinet	each	1
7.604	Cut Cable	each	1

Legend

Cabinet and Verts	Copper Joint	Trough Duct Cable Tray	Signal Box	FTN Core Node	Screen Joint Routeworks	Overbridge	Signal	Engineer's Line Reference	Crossing	GAS — GAS — Gas Line
Cabinet with Regenerator and Verts	Fibre Joint	Cable - Type Identified by FTN Code	Electrical Control Room	Core Node with GSM-R Colocated	Copper Joint Routeworks	Underbridge	Vehicle Access Point	Mile Post	Gantry	HV — HV — HV Cable
KEY	Screening Conductor Joint with/without Earth	Status - as per Key Below	Manhole	FTN Access Node	Cabinet Routeworks	Manhole details: Cross-To be used, Filled-In use, Clear-Empty	Pedestrian Access Point	Platform	TEL — TEL — Telecoms	W — W — Water
Proposed Fibre & Civils Elements are shown in RED		All Existing Elements are shown in BLACK	Mid Length Sheath Gap Fibre	FTN Access Node with GSM-R Colocated	Fibre Joint Routeworks	Tunnel	Earth Farm	Buffer Stop	Cable Pull	AC Stanchion
Proposed Copper Elements are shown in BLUE		Existing Fibre Cable	Sheath Gap Copper						Copper Blue	
Proposed Screening Elements are shown in MAGENTA		Existing Copper Cable							Fibre Red	
All Recoveries are shown in GREEN		Existing Screen Cable							Screen Green	

Notes

Rev	Date	Description of Revisions	Drawn	Chkd	Appr
C	31/01/13	As Built	RM	JH	IA
B	04.01.11	Amends as per NWR Design Review	DA	JW	CT
A	17.11.10	Redrafted from MAYA-WPDA As-built SLD.dwg	MB	JW	CT

Contractor(s)

Status: **As Built**

Scale(s): NTS, WPH1

Designed	Sign.	Date
Drawn	Sign.	Date 17.11.10
Checked	Sign.	Date 17.11.10
Approved	Sign.	Date 17.11.10
Project: FTN / GSM-R Project Stage 2		
Drawing Title: Mayford (LDT) (MAYA) to Worplesdon LDT (WPDA)		

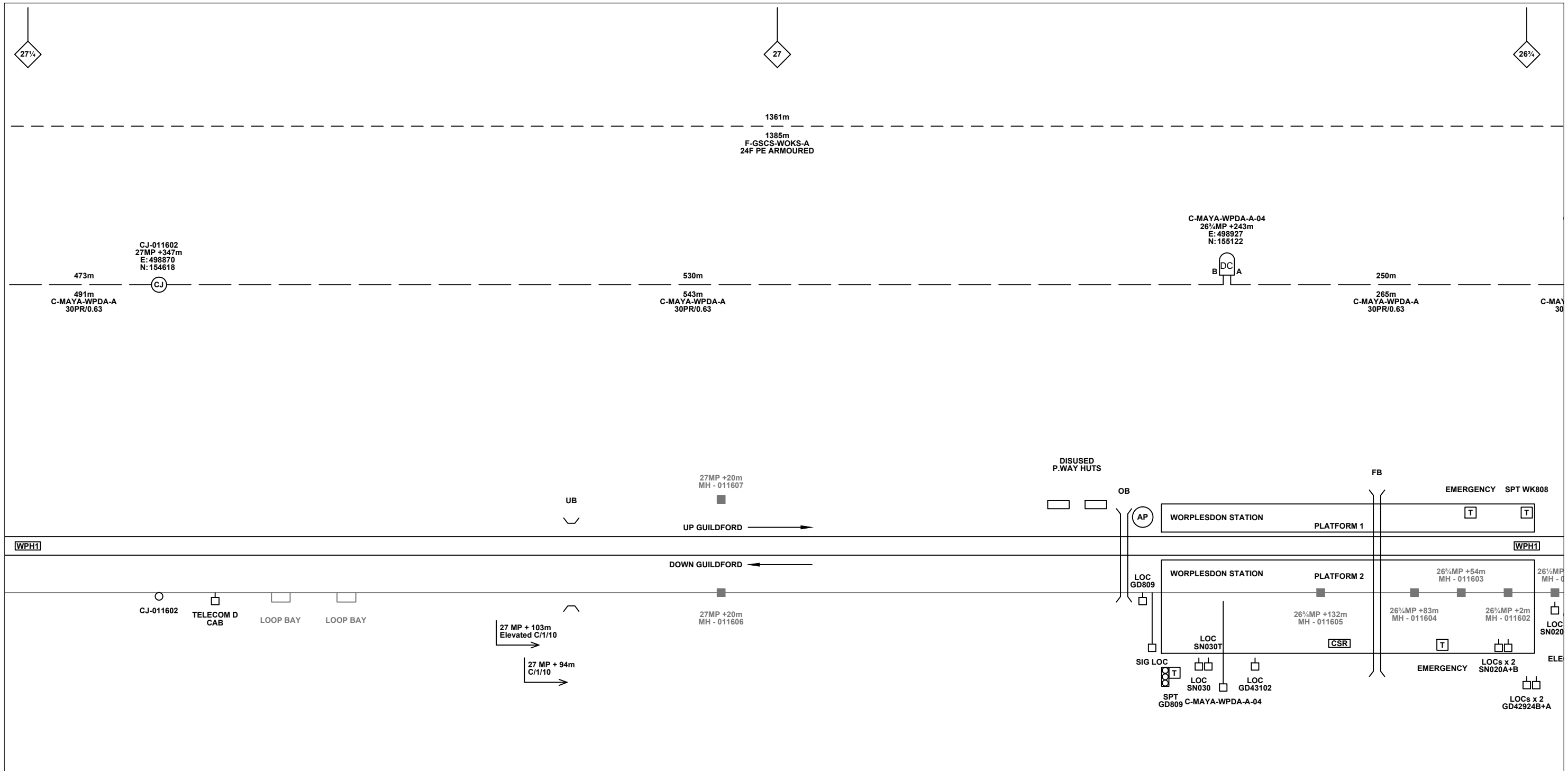
FTN/GSM-R Project
Tournament House
Paddington
London
W2 1HA

Alternative Reference: See Layout Tab 841 x 297 Sheet 1

Drawing Number: NTPOSOLDMAYAWPDA001

Sheet: 1 of 4

Revision: C



Legend

Cabinet and Verts	Copper Joint	Trough Duct Cable Tray	Signal Box	FTN Core Node	Screen Joint Routeworks	Overbridge	Signal	Engineer's Line Reference	Crossing	GAS	GAS	Gas Line
Cabinet with Regenerator and Verts	Fibre Joint	Cable - Type Identified by FTN Code	Electrical Control Room	Core Node with GSM-R Colocated	Copper Joint Routeworks	Underbridge	Vehicle Access Point	Mile Post	Gantry	HV	HV	HV Cable
KEY	Screening Conductor Joint with/without Earth	Manhole	Mid Length Sheath Gap Fibre	FTN Access Node	Cabinet Routeworks	Tunnel	Pedestrian Access Point	Platform	Buffer Stop	LV	LV	LV Cable
Proposed Fibre & Civils Elements are shown in RED	Existing Fibre Cable	Manhole	Sheath Gap Fibre	FTN Access Node with GSM-R Colocated	Fibre Joint Routeworks	Earth Farm	Telephone	Cable Pull	AC Stanchion	SEW	SEW	Sewer
Proposed Copper Elements are shown in BLUE	Existing Copper Cable	Manhole	Sheath Gap Copper	FTN Access Node with GSM-R Colocated	Fibre Joint Routeworks	Buffer Stop	Telephone	Copper Blue	AC Stanchion	TEL	TEL	Telecoms
Proposed Screening Elements are shown in MAGENTA	Existing Screen Cable	Manhole	Sheath Gap Copper	FTN Access Node with GSM-R Colocated	Fibre Joint Routeworks	Buffer Stop	Telephone	Screen Green	AC Stanchion	W	W	Water
All Recoveries are shown in GREEN	Existing Screen Cable	Manhole	Sheath Gap Copper	FTN Access Node with GSM-R Colocated	Fibre Joint Routeworks	Buffer Stop	Telephone	Screen Green	AC Stanchion	W	W	Water

Notes

Rev	Date	Description of Revisions	Drawn	Chkd	Appr
C	31/01/13	As Built	RM	JH	IA
B	04.01.11	Amends as per NWR Design Review	DA	JW	CT
A	17.11.10	Redrafted from MAYA-WPDA As-built SLD.dwg	MB	JW	CT

Contractor(s)

Status: **As Built**

Scale(s): NTS

ELR & Mileage: WPH1

Designed	Sign.	Date
Drawn	Sign.	Date 17.11.10
Checked	Sign.	Date 17.11.10
Approved	Sign.	Date 17.11.10
Project		
FTN / GSM-R Project Stage 2		
Drawing Title		
Mayford (LDT) (MAYA) to Worpleston LDT (WPDA)		

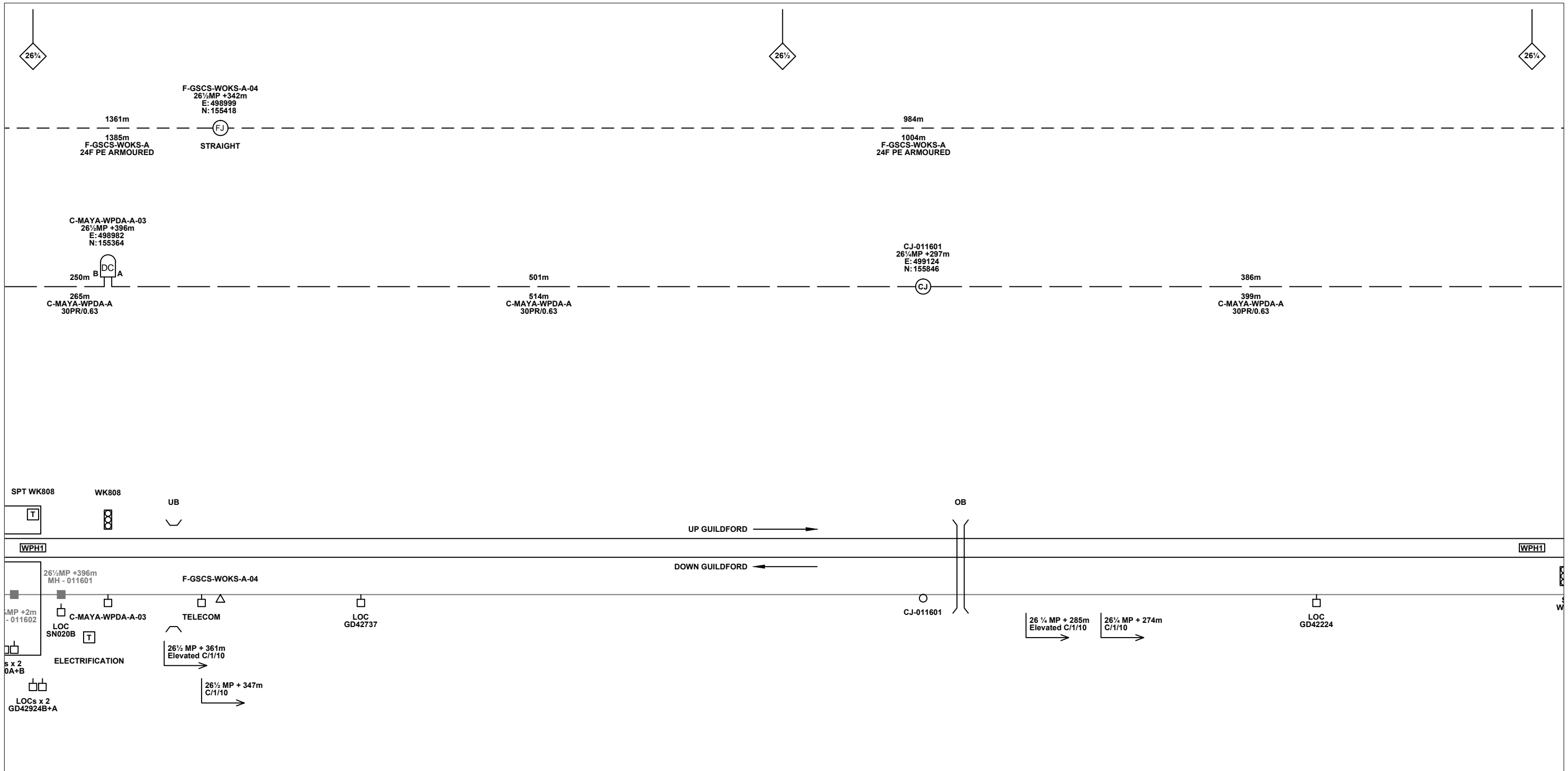
FTN/GSM-R Project
Tournament House
Paddington
London
W2 1HA

Alternative Reference: See Layout Tab 841 x 297 Sheet 1

Drawing Number: NTPOSMDMAYAWPDA001

Sheet: 2 of 4

Revision: C



Legend

Cabinet and Verts	Copper Joint	Trough Duct Cable Tray	Signal Box	FTN Core Node	Screen Joint Routeworks	Manhole details: Cross-To be used, Filled-In use, Clear-Empty	Overbridge	Signal	Engineer's Line Reference	Crossing	GAS — GAS — Gas Line
Cabinet with Regenerator and Verts	Fibre Joint	Cable - Type Identified by FTN Code	Electrical Control Room	Core Node with GSM-R Colocated	Copper Joint Routeworks	Manhole	Underbridge	Vehicle Access Point	Mile Post	Gantry	HV — HV — HV Cable
KEY	Screening Conductor Joint with/without Earth	Status - as per Key Below	Mid Length Sheath Gap Fibre	FTN Access Node	Cabinet Routeworks	Sheath Gap Copper	Tunnel	Pedestrian Access Point	Platform	Water	Cable Pull
Proposed Fibre & Civils Elements are shown in RED		All Existing Elements are shown in BLACK		FTN Access Node with GSM-R Colocated	Fibre Joint Routeworks		Earth Farm	Buffer Stop	Telephone	AC Stanchion	Screen Green
Proposed Copper Elements are shown in BLUE		Existing Fibre Cable									
Proposed Screening Elements are shown in MAGENTA		Existing Copper Cable									
All Recoveries are shown in GREEN		Existing Screen Cable									

Notes

Rev	Date	Description of Revisions	Drawn	Chkd	Appr
C	31/01/13	As Built	RM	JH	IA
B	04.01.11	Amends as per NWR Design Review	DA	JW	CT
A	17.11.10	Redrafted from MAYA-WPDA As-built SLD.dwg	MB	JW	CT

Contractor(s)

Status: **As Built**

Scale(s): NTS

ELR & Mileage: WPH1

Designed	Sign.	Date
Drawn	Sign.	Date 17.11.10
Checked	Sign.	Date 17.11.10
Approved	Sign.	Date 17.11.10
Project		
FTN / GSM-R Project Stage 2		
Drawing Title		
Mayford (LDT) (MAYA) to Worpleston LDT (WPDA)		

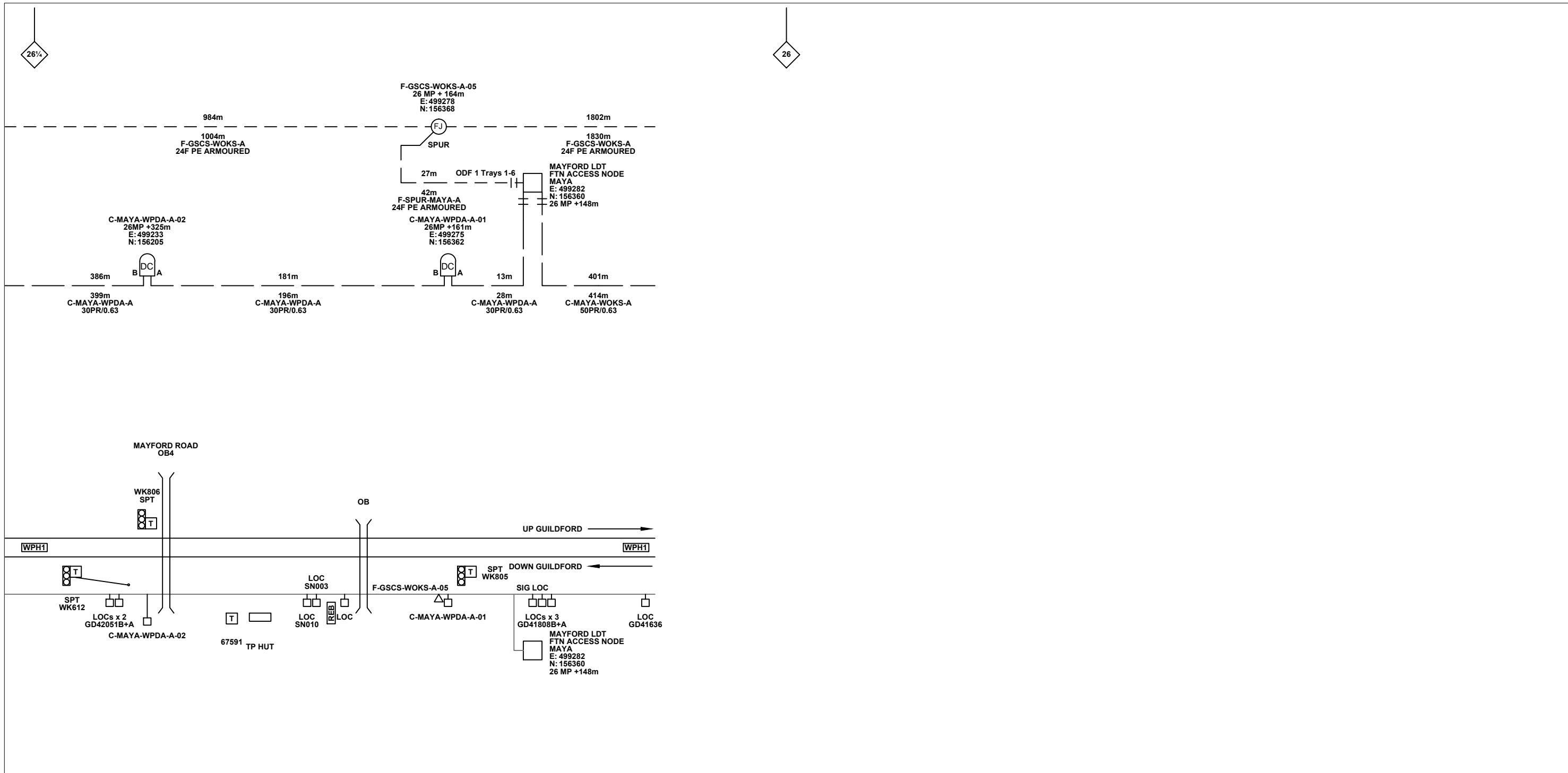
FTN/GSM-R Project
Tournament House
Paddington
London
W2 1HA

Alternative Reference: See Layout Tab 841 x 297 Sheet 2

Drawing Number: NTPOS LDMAYAWPDA001

Sheet: 3 of 4

Revision: C



Legend

Cabinet and Verts	Copper Joint	Trough Duct Cable Tray	Signal Box	FTN Core Node	Screen Joint Routeworks	Overbridge	Signal	Engineer's Line Reference	Crossing	GAS — GAS — Gas Line
Cabinet with Regenerator and Verts	Fibre Joint	Cable - Type Identified by FTN Code	Electrical Control Room	Core Node with GSM-R Colocated	Copper Joint Routeworks	Underbridge	VAP Access Point	Mile Post	Gantry	HV — HV — HV Cable
KEY	Screening Conductor Joint with/without Earth	Status - as per Key Below	Manhole	FTN Access Node	Cabinet Routeworks	Manhole details: Cross-To be used, Filled-In use, Clear-Empty	PAP Access Point	Platform	SEW — SEW — Sewer	LV — LV — LV Cable
Proposed Fibre & Civils Elements are shown in RED		All Existing Elements are shown in BLACK	Mid Length Sheath Gap Fibre	FTN Access Node with GSM-R Colocated	Fibre Joint Routeworks	Tunnel	Earth Farm	Telephone	TEL — TEL — Telecoms	W — W — Water
Proposed Copper Elements are shown in BLUE		Existing Fibre Cable	Sheath Gap Copper				Buffer Stop		Cable Pull	AC Stanchion
Proposed Screening Elements are shown in MAGENTA		Existing Copper Cable								
All Recoveries are shown in GREEN		Existing Screen Cable								

Rev	Date	Description of Revisions	Drawn	Chkd	Appr
C	31/01/13	As Built	RM	JH	IA
B	04.01.11	Amends as per NWR Design Review	DA	JW	CT
A	17.11.10	Redrafted from MAYA-WPDA As-built SLD.dwg	MB	JW	CT

Contractor(s)

Status: **As Built**

Scale(s): NTS, WPH1

Designed	Sign.	Date
Drawn	Sign.	Date 17.11.10
Checked	Sign. <i>M.L.</i>	Date 17.11.10
Approved	Sign. <i>Chris Tappenden</i>	Date 17.11.10
Project		
FTN / GSM-R Project Stage 2		
Drawing Title		
Mayford (LDT) (MAYA) to Worpleston LDT (WPDA)		

FTN/GSM-R Project
Tournament House
Paddington
London
W2 1HA

Alternative Reference: See Layout Tab 841 x 297 Sheet 2

Drawing Number: NTPOSOLDMAYAWPDA001

Sheet: 4 of 4

Revision: C