

DRAWING ROTATED 90 DEGREES FOR EASE OF COMPREHENSION

Intermediate Works Bill of Quantities			
7.360	Renumber Copper Joint	each	4

Legend

Cabinet and Verts	Copper Joint	Trough Duct Cable Tray	Signal Box	FTN Core Node	Screen Joint Routeworks	Manhole details: Cross-To be used Filled-In use Clear-Empty	Overbridge	Signal	MLNI	Engineer's Line Reference
Cabinet with Regenerator and Verts	Fibre Joint	Cable - Type Identified by FTN Code Status - as per Key Below	Electrical Control Room	Core Node with GSM-R Colocated	Copper Joint Routeworks	Manhole	Underbridge	Vehicle Access Point	Pedestrian Access Point	Mile Post
KEY	Screening Conductor Joint with/without Earth	All Existing Elements are shown in BLACK	Mid Length Sheath Gap Fibre	FTN Access Node	Cabinet Routeworks	Tunnel	Earth Form	Buffer Stop	Telephone	Crossing
Proposed Fibre & Civils Elements are shown in RED	Proposed Copper Elements are shown in BLUE	Existing Fibre Cable	Sheath Gap Copper	FTN Access Node with GSM-R Colocated	Fibre Joint Routeworks	Gantry	Cable Pull	Mast	Gas Line	HV Cable
Proposed Screening Elements are shown in MAGENTA	All Existing Elements are shown in BLACK	Existing Copper Cable	Existing Screen Cable	FTN Access Node with GSM-R Colocated	Fibre Joint Routeworks	Sewer	Fibre Red	Fibre Green	LV Cable	Telecoms
All Recoveries are shown in GREEN	Existing Fibre Cable	Existing Copper Cable	Existing Screen Cable	FTN Access Node with GSM-R Colocated	Fibre Joint Routeworks	Water	Fibre Red	Fibre Green	Water	Mast

Notes

Rev	Date	Description of Revisions	Drawn	Chkd	Appr
B	30/07/12	Stage 2 Design- First Issue	SH	JW	CT
A	05/12/08	2nd Issue	MT	PW-B	SW
DA	26/08/08	1st Issue	MT	PW-B	SW
Rev	Date	Description of Revisions	Drawn	Chkd	Appr

ndcconsultants
Unit 4 Apex Park, Wainwright Road, Worcester, Worcestershire, WR4 9FN. Tel: 01905 756000

Design
ELR & Mileage
WEY, YJP

Designed	Drawn	Checked	Approved	Project
Stephen Holder	Joe Winter	Joe Winter	Chris Tappenden	FTN/GSM-R Project
Sign.	Sign.	Sign.	Sign.	FTN/GSM-R Project
Date	Date	Date	Date	Tournament House
30/07/2012	30/07/2012	30/07/2012	30/07/2012	Passington
				London
				W2 1HA

FTN/GSM-R Project Stage 2 Design

Yeovil Junction (1087) to Yeovil Pen Mill Station (1103)

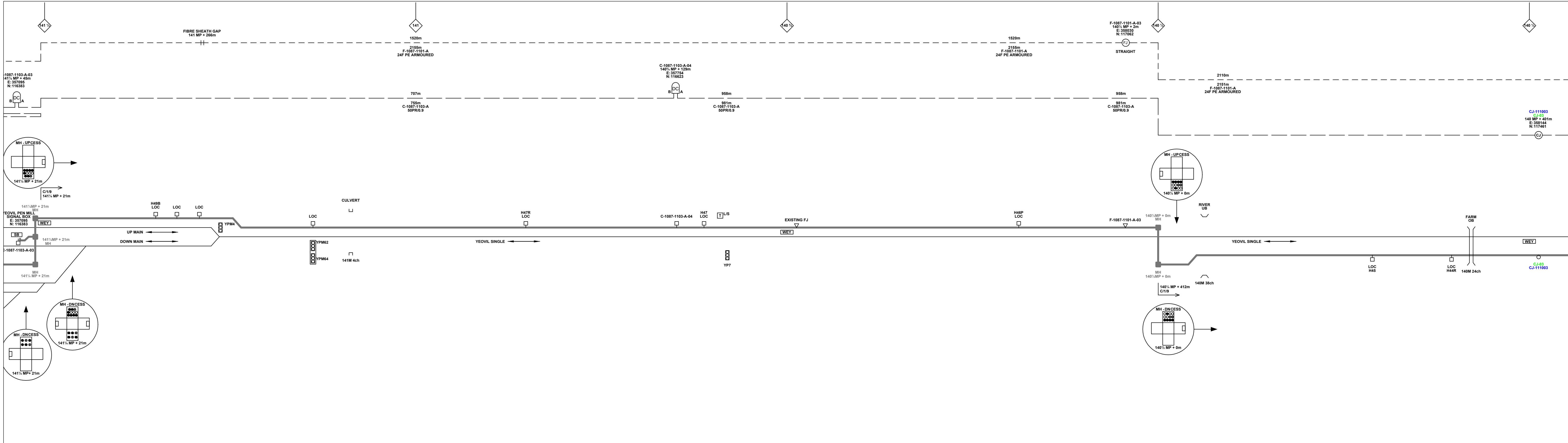
Network Rail

Alternative Reference: See Layout Tab A3 Sheets 1 and 2

Drawing Number: NTPO\SLD\1087\1103\001

Sheet 1 of 5

Revision B



Legend

	Cabinet and Verts		Copper Joint		Trough Duct Cable Tray		Signal Box		FTN Core Node		Screen Joint Routeworks		Manhole details: Cross-To be used Filled-In use Clear-Empty		Overbridge		Signal		Engineer's Line Reference		
	Cabinet with Regenerator and Verts		Fibre Joint		Electrical Control Room		Manhole		Core Node with GSM-R Colocated		Copper Joint Routeworks		Tunnel		Underbridge		Vehicle Access Point		Mile Post		
			Screening Conductor Joint with/without Earth		Cable - Type Identified by FTN Code Status - as per Key Below		Mid Length Sheath Gap Fibre		FTN Access Node		Cabinet Routeworks		Manhole		Platform		Pedestrian Access Point		Telephone		
			Manhole		Sheath Gap Copper		FTN Access Node with GSM-R Colocated		Fibre Joint Routeworks		Earth Form		Buffer Stop		Cable Pull		Mast		Gas Line		
																			HV Cable		
																				LV Cable	
																					Sewer
																					Telecoms
																					Water

Notes

B	30/07/12	Stage 2 Design- First Issue	SH	JW	CT
A	05/12/08	2nd Issue	MT	PW-B	SW
DA	26/08/08	1st Issue	MT	PW-B	SW
Rev	Date	Description of Revisions	Drawn	Chkd	Appr

ndcconsultants
 Unit 4 Apex Park, Wainwright Road, Worcester, Worcestershire, WR4 9FN. Tel: 01905 756000

Contractor(s)

Scale(s)

NTS

Design

ELR & Mileage

WEY, YJP

Designed	Stephen Holder	Sign.	[Signature]	Date	30/07/2012
Checked	Joe Winter	Sign.	[Signature]	Date	30/07/2012
Approved	Chris Tappenden	Sign.	[Signature]	Date	30/07/2012

Project

**FTN/GSM-R Project
Stage 2 Design**

Drawing Title

**Yeovil Junction (1087) to
Yeovil Pen Mill Station (1103)**

Network Rail

FTN/GSM-R Project
Tournament House
Passington
London
W2 1HA

Alternative Reference

See Layout Tab A3 Sheets 5 and 6

Drawing Number

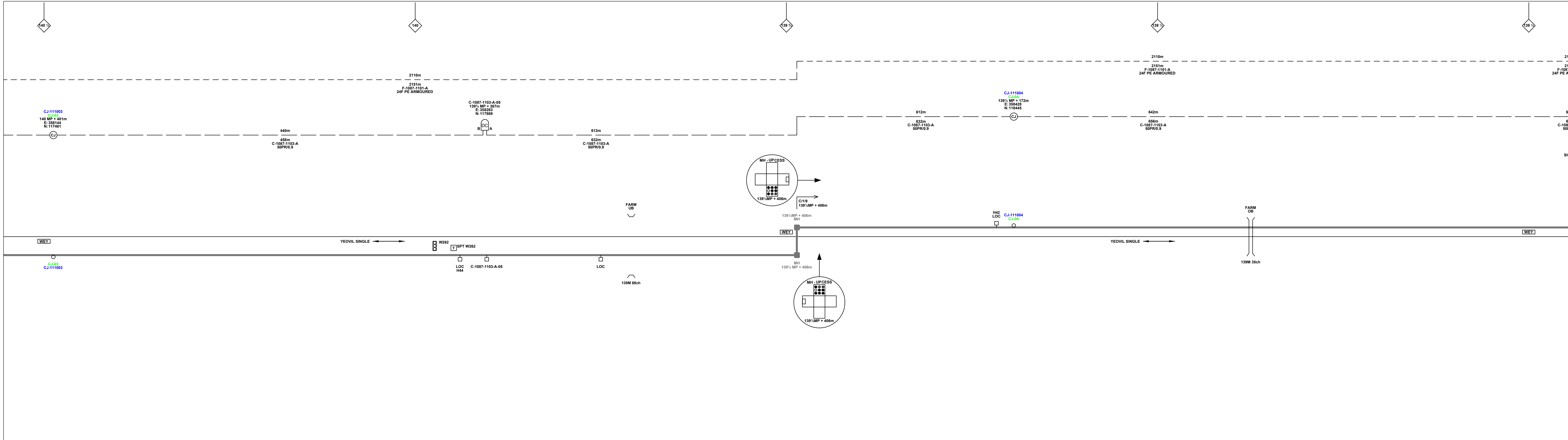
NTPO\SLD\1087\1103\001

Sheet

3 of 5

Revision

B



Legend

	Cabinet and Verts		Copper Joint		Trough Duct Cable Tray		Signal Box		FTN Core Node		Screen Joint Routeworks		Manhole details: Cross-To be used Filled-In use Clear-Empty		Overbridge		Signal		Engineer's Line Reference
	Cabinet with Regenerator and Verts		Fibre Joint		Cable - Type Identified by FTN Code Status - as per Key Below		Electrical Control Room		Core Node with GSM-R Colocated		Copper Joint Routeworks		Manhole		Underbridge		Vehicle Access Point		Mile Post
	KEY: Proposed Fibre & Civils Elements are shown in RED		Screening Conductor Joint with/without Earth		Mid Length Sheath Gap Fibre		Manhole		FTN Access Node		Cabinet Routeworks		Tunnel		Earth Form		Pedestrian Access Point		Platform
	KEY: Proposed Copper Elements are shown in BLUE		Existing Fibre Cable		Sheath Gap Copper		Manhole		FTN Access Node with GSM-R Colocated		Fibre Joint Routeworks		Cable Pull		Buffer Stop		Water		Telephone
	KEY: Proposed Screening Elements are shown in MAGENTA		Existing Copper Cable		Copper Blue Fibre		Manhole		Manhole		Screen Green		Mast		Gas Line		HV Cable		LV Cable
	KEY: All Recoveries are shown in GREEN		Existing Screen Cable		Sewer		Telecoms		Water		Mast		Mast		Gas Line		HV Cable		LV Cable

Notes

Rev	Date	Description of Revisions	Drawn	Chkd	Appr
B	30/07/12	Stage 2 Design- First Issue	SH	JW	CT
A	05/12/08	2nd Issue	MT	PW-B	SW
DA	26/08/08	1st Issue	MT	PW-B	SW
Rev	Date	Description of Revisions	Drawn	Chkd	Appr

ndcconsultants
Unit 4 Apex Park, Wainwright Road, Worcester, Worcestershire, WR4 9FN. Tel: 01905 756000

Design
ELR & Mileage
WEY, YJP

Contractor(s):
NTS

Designed	Stephen Holder	Sign.	[Signature]	Date	30/07/2012
Checked	Joe Winter	Sign.	[Signature]	Date	30/07/2012
Approved	Chris Tappenden	Sign.	[Signature]	Date	30/07/2012

FTN/GSM-R Project Stage 2 Design

Yeovil Junction (1087) to Yeovil Pen Mill Station (1103)

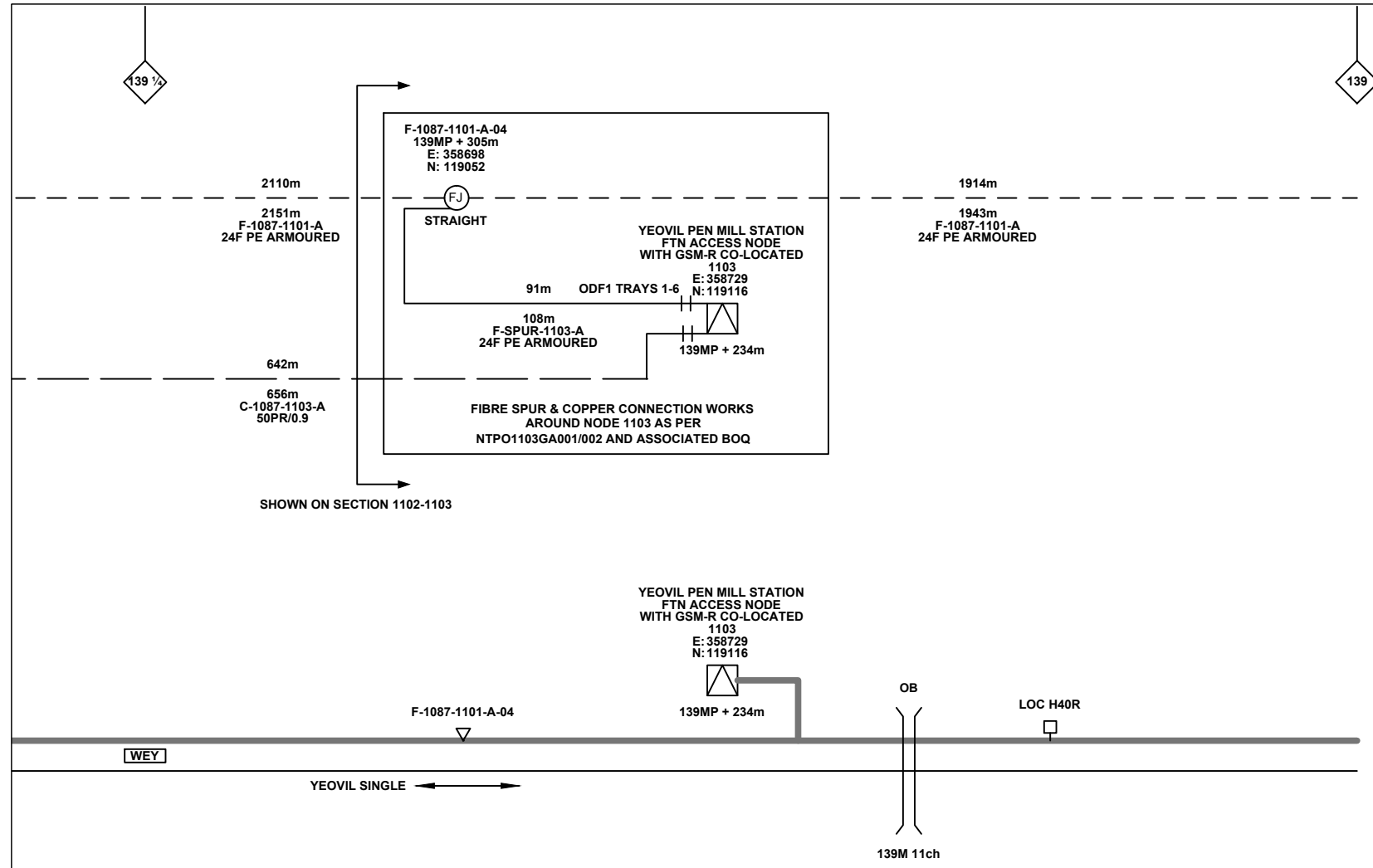
Network Rail

FTN/GSM-R Project
Tournament House
Passington
London
W2 1HA

Alternative Reference: See Layout Tab A3 Sheets 7 and 8

Drawing Number: NTPO\SLD\1087\1103\001

Sheet 4 of 5
Revision B



Legend

Cabinet and Verts	Copper Joint	Trough Duct Cable Tray	Signal Box	FTN Core Node	Screen Joint Routeworks	Manhole	Overbridge	Signal	Engineer's Line Reference
Cabinet with Regenerator and Verts	Fibre Joint	Cable - Type Identified by FTN Code Status - as per Key Below	Electrical Control Room	Core Node with GSM-R Colocated	Copper Joint Routeworks	Mid Length Sheath Gap Fibre	Underbridge	Vehicle Access Point	Mile Post
KEY	Screening Conductor Joint with/without Earth	All Existing Elements are shown in BLACK	Manhole	FTN Access Node	Cabinet Routeworks	Sheath Gap Copper	Tunnel	Pedestrian Access Point	Platform
Proposed Fibre & Civils Elements are shown in RED	Existing Fibre Cable	Existing Copper Cable	Manhole	FTN Access Node with GSM-R Colocated	Fibre Joint Routeworks	Earth Form	Manhole details: Cross-To be used Filled-In use Clear-Empty	Cable Pull	Telephone
Proposed Copper Elements are shown in BLUE	Existing Screen Cable	Existing Screen Cable	Manhole	FTN Access Node with GSM-R Colocated	Fibre Joint Routeworks	Buffer Stop	Manhole details: Cross-To be used Filled-In use Clear-Empty	Copper Blue Fibre Red Screen Green	Telephone
Proposed Screening Elements are shown in MAGENTA	Existing Screen Cable	Existing Screen Cable	Manhole	FTN Access Node with GSM-R Colocated	Fibre Joint Routeworks	Buffer Stop	Manhole details: Cross-To be used Filled-In use Clear-Empty	Copper Blue Fibre Red Screen Green	Telephone
All Recoveries are shown in GREEN	Existing Screen Cable	Existing Screen Cable	Manhole	FTN Access Node with GSM-R Colocated	Fibre Joint Routeworks	Buffer Stop	Manhole details: Cross-To be used Filled-In use Clear-Empty	Copper Blue Fibre Red Screen Green	Telephone

Notes

Rev	Date	Description of Revisions	Drawn	Chkd	Appr
B	30/07/12	Stage 2 Design- First Issue	SH	JW	CT
A	05/12/08	2nd Issue	MT	PW-B	SW
DA	26/08/08	1st Issue	MT	PW-B	SW

ndcconsultants
Unit 4 Apex Park, Wainwright Road, Worcester, Worcestershire, WR4 9FN. Tel: 01905 756000

Contractor(s)

Status Design

Scale(s) ELR & Mileage WEY, YJP

Drawn	Checked	Approved	Project	Design	Sign.	Date
Stephen Holder	Joe Winter	Chris Tappenden	FTN/GSM-R Project	Design		30/07/2012

Network Rail

FTN/GSM-R Project
Tournament House
Passington
London
W2 1HA

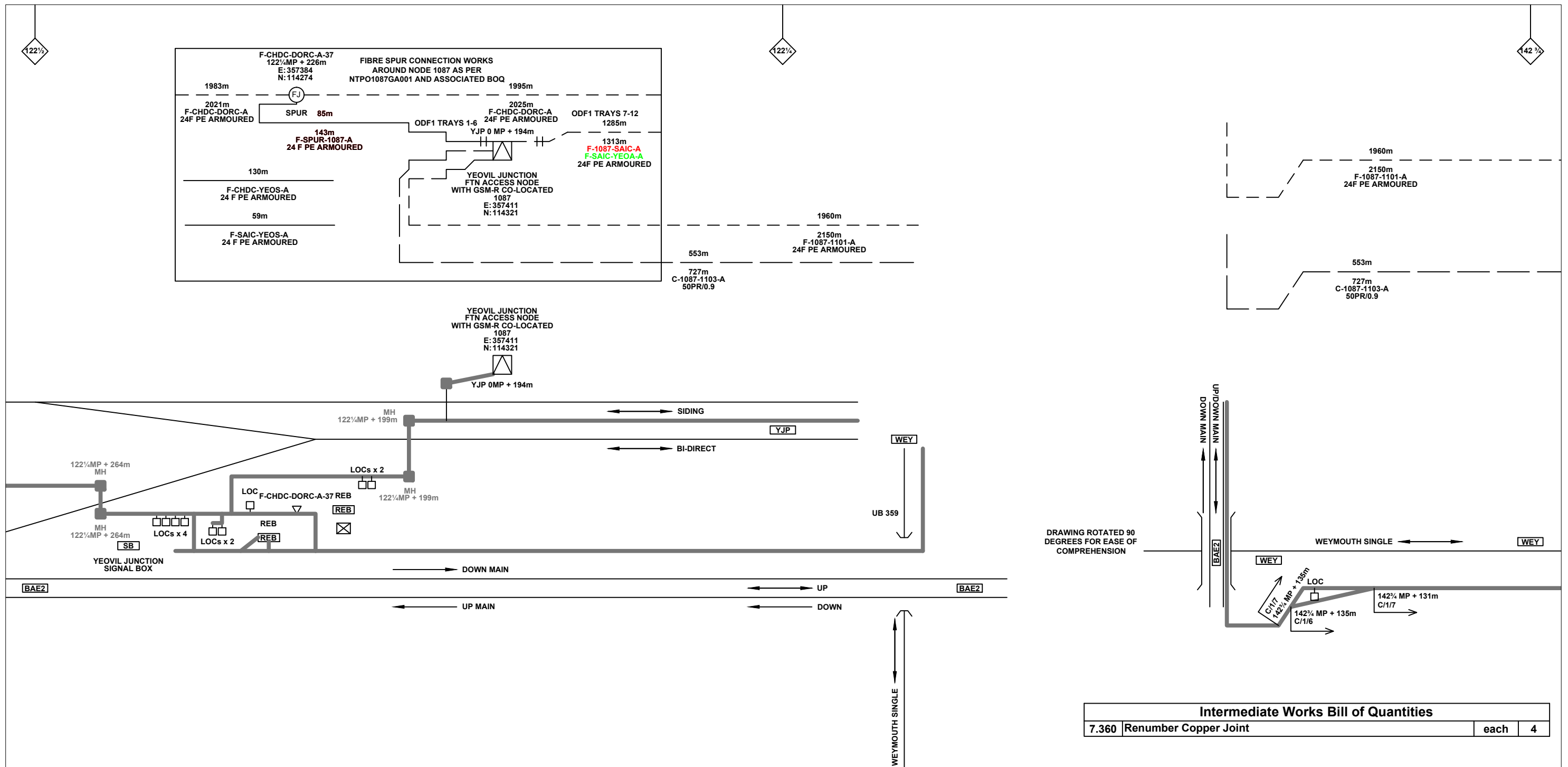
Drawing Title Yeovil Junction (1087) to Yeovil Pen Mill Station (1103)

Alternative Reference See Layout Tab A3 Sheet 9

Sheet 5 of 5

Revision B

Drawing Number NTPO\SLD\1087\1103\001




Legend

Cabinet and Verts	Copper Joint	Trough Duct Cable Tray	Signal Box	FTN Core Node	Screen Joint Routeworks	Overbridge	Signal	Engineer's Line Reference	Gas Line
Cabinet with Regenerator and Verts	Fibre Joint	Cable - Type Identified by FTN Code	Electrical Control Room	Core Node with GSM-R Colocated	Copper Joint Routeworks	Underbridge	Vehicle Access Point	Mile Post	HV Cable
KEY	Screening Conductor Joint with/without Earth	Manhole	Mid Length Sheath Gap Fibre	FTN Access Node	Cabinet Routeworks	Tunnel	Pedestrian Access Point	Platform	LV Cable
Proposed Fibre & Civils Elements are shown in RED	All Existing Elements are shown in BLACK	Sheath Gap Copper	FTN Access Node with GSM-R Colocated	Fibre Joint Routeworks	Earth Farm	Buffer Stop	Telephone	Crossing	Sewer
Proposed Copper Elements are shown in BLUE	--- Existing Fibre Cable							Gantry	Telecoms
Proposed Screening Elements are shown in MAGENTA	--- Existing Copper Cable							Cable Pull	Water
All Recoveries are shown in GREEN	--- Existing Screen Cable							Mast	

Notes

Rev	Date	Description of Revisions	Drawn	Chkd	Appr
B	30/07/12	Stage 2 Design- First Issue	SH	JW	CT
A	05/12/08	2nd Issue	MT	PW-B	SW
DA	26/08/08	1st Issue	MT	PW-B	SW

Contractor(s)




Unit 4 Apex Park, Wainwright Road, Worcester, Worcestershire, WR4 9FN. Tel: 01905 756000

Status: **Design**

Scale(s): NTS

ELR & Mileage: WEY, YJP

Designed		Sign.		Date	
Drawn	Stephen Holder	Sign.		Date	30/07/2012
Checked	Joe Winter	Sign.		Date	30/07/2012
Approved	Chris Tappenden	Sign.		Date	30/07/2012
Project: FTN/GSM-R Project Stage 2 Design					
Drawing Title: Yeovil Junction (1087) to Yeovil Pen Mill Station (1103)					



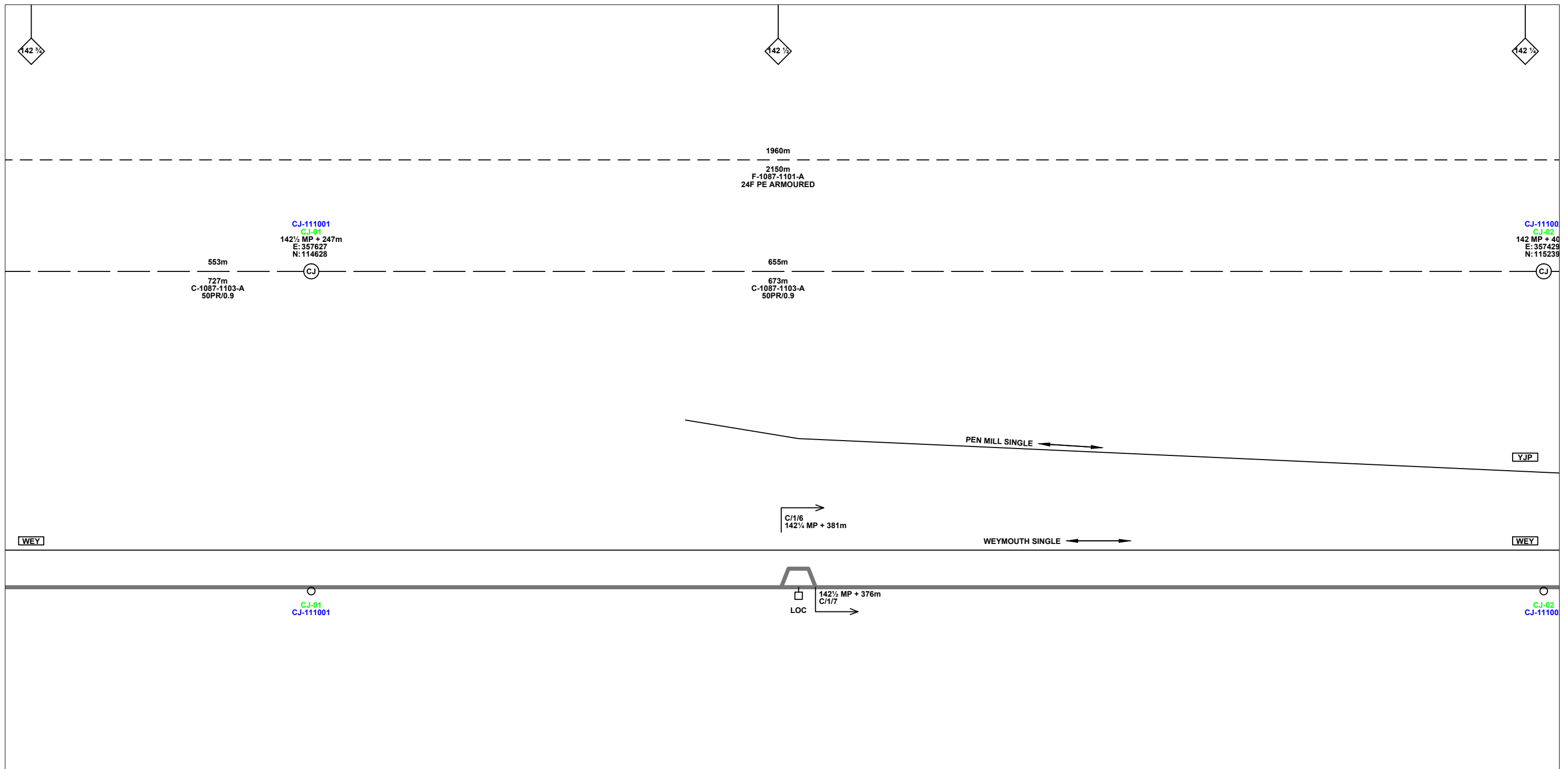
FTN/GSM-R Project
Tournament House
Paddington
London
W2 1HA

Alternative Reference: See Layout Tab 841 x 297 Sheet 1

Drawing Number: NTPO\SLD\1087\1103\001

Sheet: 1 of 9

Revision: B



Legend

Cabinet and Verts	Copper Joint	Signal Box	FTN Core Node	Screen Joint Routeworks	Overbridge	Signal	Engineer's Line Reference	Crossing	Gas Line
Cabinet with Regenerator and Verts	Fibre Joint	Electrical Control Room	Core Node with GSM-R Colocated	Copper Joint Routeworks	Underbridge	Vehicle Access Point	Mile Post	Gantry	HV Cable
KEY	Screening Conductor Joint with/without Earth	Manhole	FTN Access Node	Cabinet Routeworks	Manhole details: Cross-To be used, Filled-In use, Clear-Empty	Pedestrian Access Point	Platform	Sewer	LV Cable
Proposed Fibre & Civils Elements are shown in RED		Mid Length Sheath Gap Fibre	FTN Access Node with GSM-R Colocated	Fibre Joint Routeworks	Tunnel	Earth Farm	Telephone	Sewer	Water
Proposed Copper Elements are shown in BLUE		Sheath Gap Copper				Buffer Stop		Cable Pull	Mast
Proposed Screening Elements are shown in MAGENTA									
All Recoveries are shown in GREEN									

KEY
 Proposed Fibre & Civils Elements are shown in RED
 Proposed Copper Elements are shown in BLUE
 Proposed Screening Elements are shown in MAGENTA
 All Recoveries are shown in GREEN

All Existing Elements are shown in BLACK
 --- Existing Fibre Cable
 --- Existing Copper Cable
 --- Existing Screen Cable

Notes

Rev	Date	Description of Revisions	Drawn	Chkd	Appr
B	30/07/12	Stage 2 Design- First Issue	SH	JW	CT
A	05/12/08	2nd Issue	MT	PW-B	SW
DA	26/08/08	1st Issue	MT	PW-B	SW

Contractor(s)

Unit 4 Apex Park, Wainwright Road, Worcester, Worcestershire, WR4 9FN. Tel: 01905 756000

Status: **Design**

Scale(s): NTS

ELR & Mileage: WEY, YJP

Designed		Sign.		Date	
Drawn	Stephen Holder	Sign.		Date	30/07/2012
Checked	Joe Winter	Sign.		Date	30/07/2012
Approved	Chris Tappenden	Sign.		Date	30/07/2012
Project	FTN/GSM-R Project Stage 2 Design				
Drawing Title	Yeovil Junction (1087) to Yeovil Pen Mill Station (1103)				

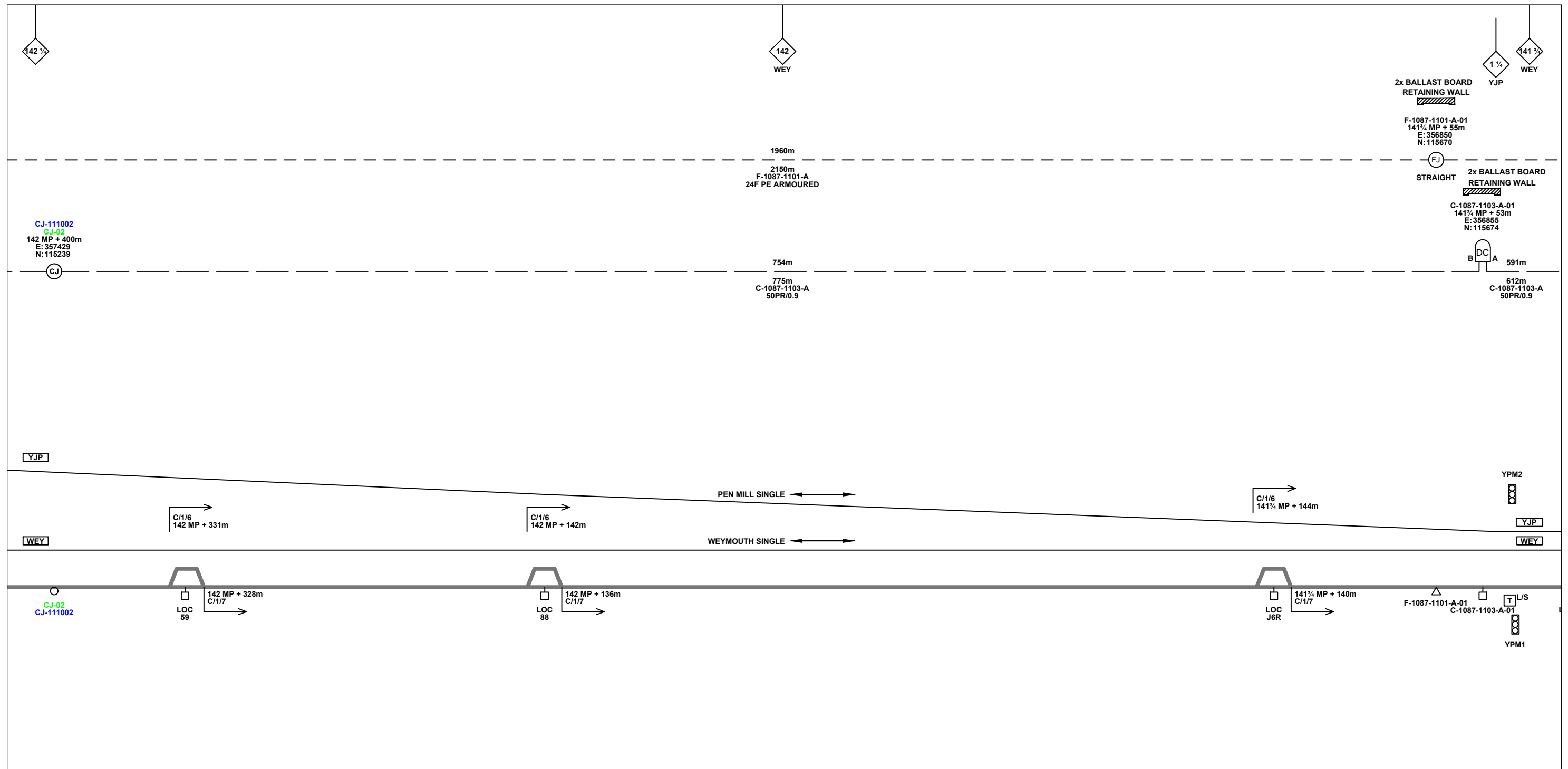
FTN/GSM-R Project
Tournament House
Paddington
London
W2 1HA

Alternative Reference: See Layout Tab 841 x 297 Sheet 1

Drawing Number: NTPO\SLD\1087\1103\001

Sheet: 2 of 9

Revision: B



Legend

Cabinet and Verts	Copper Joint	Trough Duct Cable Tray	Signal Box	FTN Core Node	Screen Joint Routeworks	Overbridge	Signal	Engineer's Line Reference	Crossing	GAS — GAS — Gas Line
Cabinet with Regenerator and Verts	Fibre Joint	Cable - Type Identified by FTN Code	Electrical Control Room	Core Node with GSM-R Colocated	Copper Joint Routeworks	Underbridge	Vehicle Access Point	Mile Post	HV — HV — HV Cable	
KEY	Screening Conductor Joint with/without Earth	Manhole	Mid Length Sheath Gap Fibre	FTN Access Node	Cabinet Routeworks	Manhole details: Cross-To be used	Pedestrian Access Point	Platform	LV — LV — LV Cable	
Proposed Fibre & Civils Elements are shown in RED		Sheath Gap Copper	FTN Access Node with GSM-R Colocated	Fibre Joint Routeworks	Tunnel	Earth Farm	Buffer Stop	Telephone	SEW — SEW — Sewer	
Proposed Copper Elements are shown in BLUE									TEL — TEL — Telecoms	
Proposed Screening Elements are shown in MAGENTA									W — W — Water	
All Recoveries are shown in GREEN									Cable Pull	
All Existing Elements are shown in BLACK									Mast	
Existing Fibre Cable										
Existing Copper Cable										
Existing Screen Cable										

Notes

Rev	Date	Description of Revisions	Drawn	Chkd	Appr
B	30/07/12	Stage 2 Design- First Issue	SH	JW	CT
A	05/12/08	2nd Issue	MT	PW-B	SW
DA	26/08/08	1st Issue	MT	PW-B	SW

Contractor(s)

Unit 4 Apex Park, Wainwright Road, Worcester, Worcestershire, WR4 9FN. Tel: 01905 756000

Status: **Design**

Scale(s): NTS

ELR & Mileage: WEY, YJP

Designed		Sign.		Date	
Drawn	Stephen Holder	Sign.		Date	30/07/2012
Checked	Joe Winter	Sign.		Date	30/07/2012
Approved	Chris Tappenden	Sign.		Date	30/07/2012
Project	FTN/GSM-R Project Stage 2 Design				
Drawing Title	Yeovil Junction (1087) to Yeovil Pen Mill Station (1103)				

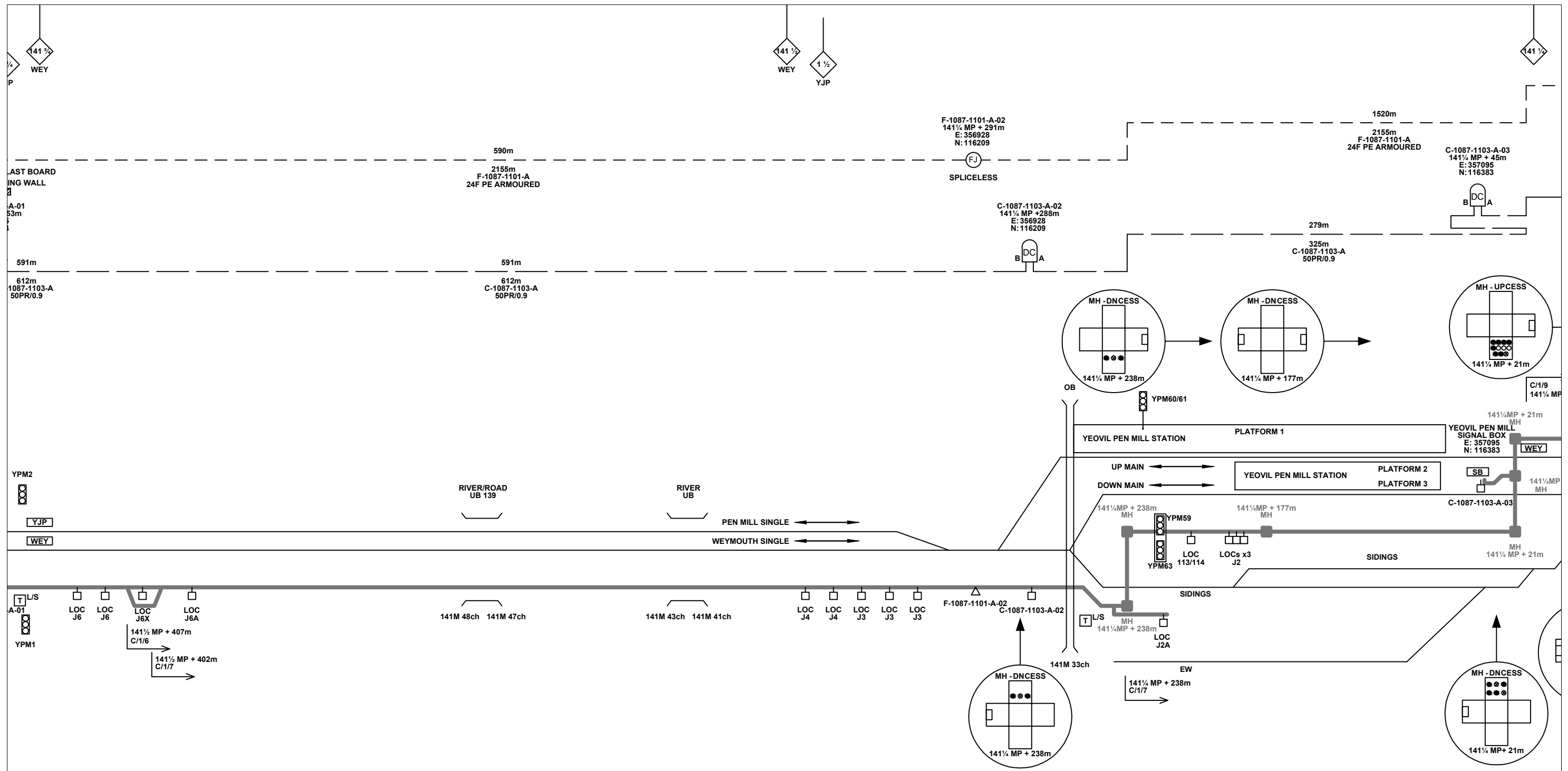
FTN/GSM-R Project
Tournament House
Paddington
London
W2 1HA

Alternative Reference: See Layout Tab 841 x 297 Sheet 2

Drawing Number: NTPO\SLD\1087\1103\001

Sheet: 3 of 9

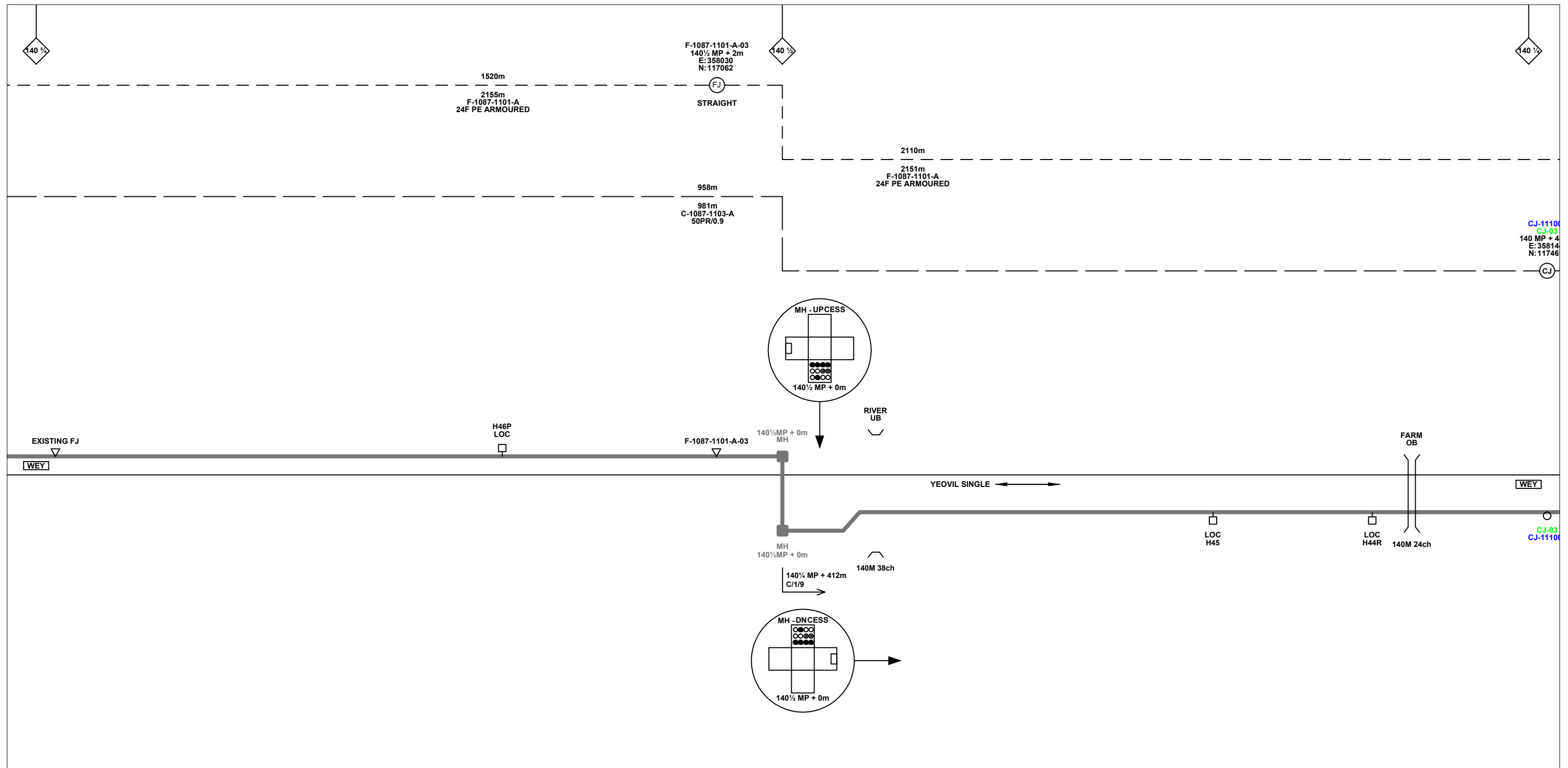
Revision: B



Legend

Cabinet and Verts	Copper Joint	Trough Duct Cable Tray	Signal Box	FTN Core Node	Screen Joint Routeworks	Overbridge	Signal	Engineer's Line Reference	Crossing	Gas Line
Cabinet with Regenerator and Verts	Fibre Joint	Cable - Type Identified by FTN Code	Electrical Control Room	Core Node with GSM-R Colocated	Copper Joint Routeworks	Underbridge	Vehicle Access Point	Mile Post	HV Cable	Sewer
KEY	Screening Conductor Joint with/without Earth	Manhole	Mid Length Sheath Gap Fibre	FTN Access Node	Cabinet Routeworks	Tunnel	Pedestrian Access Point	Platform	LV Cable	Telecoms
Proposed Fibre & Civils Elements are shown in RED	All Existing Elements are shown in BLACK	Manhole details: Cross-To be used	Sheath Gap Copper	FTN Access Node with GSM-R Colocated	Fibre Joint Routeworks	Earth Farm	Buffer Stop	Telephone	Water	Mast
Proposed Copper Elements are shown in BLUE	--- Existing Fibre Cable	Manhole details: Filled-In use								
Proposed Screening Elements are shown in MAGENTA	--- Existing Copper Cable	Manhole details: Clear-Empty								
All Recoveries are shown in GREEN	--- Existing Screen Cable									

Contractor(s)			Designed			Sign.			Date																							
 Unit 4 Apex Park, Wainwright Road, Worcester, Worcestershire, WR4 9FN. Tel: 01905 756000			Drawn			Stephen Holder			Date 30/07/2012																							
			Checked			Joe Winter			Date 30/07/2012																							
			Approved			Chris Tappenden			Date 30/07/2012																							
			Project			FTN/GSM-R Project Stage 2 Design																										
Status			Design			Drawing Title			Alternative Reference																							
NTS			ELR & Mileage			Yeovil Junction (1087) to Yeovil Pen Mill Station (1103)			See Layout Tab 841 x 297 Sheet 2																							
Scale(s)			WEY, YJP			Drawing Number			Revision																							
NTS						NTPO\SLD\1087\1103\001			B																							
<table border="1"> <tr> <th>Rev</th> <th>Date</th> <th>Description of Revisions</th> <th>Drawn</th> <th>Chkd</th> <th>Appr</th> </tr> <tr> <td>B</td> <td>30/07/12</td> <td>Stage 2 Design- First Issue</td> <td>SH</td> <td>JW</td> <td>CT</td> </tr> <tr> <td>A</td> <td>05/12/08</td> <td>2nd Issue</td> <td>MT</td> <td>PW-B</td> <td>SW</td> </tr> <tr> <td>DA</td> <td>26/08/08</td> <td>1st Issue</td> <td>MT</td> <td>PW-B</td> <td>SW</td> </tr> </table>			Rev	Date	Description of Revisions	Drawn	Chkd	Appr	B	30/07/12	Stage 2 Design- First Issue	SH	JW	CT	A	05/12/08	2nd Issue	MT	PW-B	SW	DA	26/08/08	1st Issue	MT	PW-B	SW	 FTN/GSM-R Project Tournament House Paddington London W2 1HA			Sheet 4 of 9		
Rev	Date	Description of Revisions	Drawn	Chkd	Appr																											
B	30/07/12	Stage 2 Design- First Issue	SH	JW	CT																											
A	05/12/08	2nd Issue	MT	PW-B	SW																											
DA	26/08/08	1st Issue	MT	PW-B	SW																											



CJ-1110
CJ-03
140 MP + 4
E: 35814
N: 11746

CJ-03
CJ-1110

Legend

Cabinet and Verts	Copper Joint	Trough Duct Cable Tray	Signal Box	FTN Core Node	Screen Joint Routeworks	Overbridge	Signal	Engineer's Line Reference	Crossing	GAS — GAS — GAS — Gas Line
Cabinet with Regenerator and Verts	Fibre Joint	Cable - Type Identified by FTN Code	Electrical Control Room	Core Node with GSM-R Colocated	Copper Joint Routeworks	Underbridge	VAP Vehicle Access Point	Mile Post	Gantry	HV — HV — HV — HV Cable
KEY	Screening Conductor Joint with/without Earth	Manhole	Mid Length Sheath Gap Fibre	FTN Access Node	Cabinet Routeworks	Manhole details: Cross-To be used	PAP Pedestrian Access Point	Platform	SEW — SEW — SEW — Sewer	LV — LV — LV — LV Cable
Proposed Fibre & Civils Elements are shown in RED		Status - as per Key Below	Sheath Gap Copper	FTN Access Node with GSM-R Colocated	Fibre Joint Routeworks	Tunnel	Earth Farm	Telephone	Water	Mast
Proposed Copper Elements are shown in BLUE		Existing Fibre Cable								
Proposed Screening Elements are shown in MAGENTA		Existing Copper Cable								
All Recoveries are shown in GREEN		Existing Screen Cable								

Notes

Rev	Date	Description of Revisions	Drawn	Chkd	Appr
B	30/07/12	Stage 2 Design- First Issue	SH	JW	CT
A	05/12/08	2nd Issue	MT	PW-B	SW
DA	26/08/08	1st Issue	MT	PW-B	SW

Contractor(s)

Unit 4 Apex Park, Wainwright Road, Worcester, Worcestershire, WR4 9FN. Tel: 01905 756000

Status: **Design**

Scale(s): NTS

ELR & Mileage: WEY, YJP

Designed		Sign.		Date	
Drawn	Stephen Holder	Sign.		Date	30/07/2012
Checked	Joe Winter	Sign.		Date	30/07/2012
Approved	Chris Tappenden	Sign.		Date	30/07/2012
Project	FTN/GSM-R Project Stage 2 Design				
Drawing Title	Yeovil Junction (1087) to Yeovil Pen Mill Station (1103)				

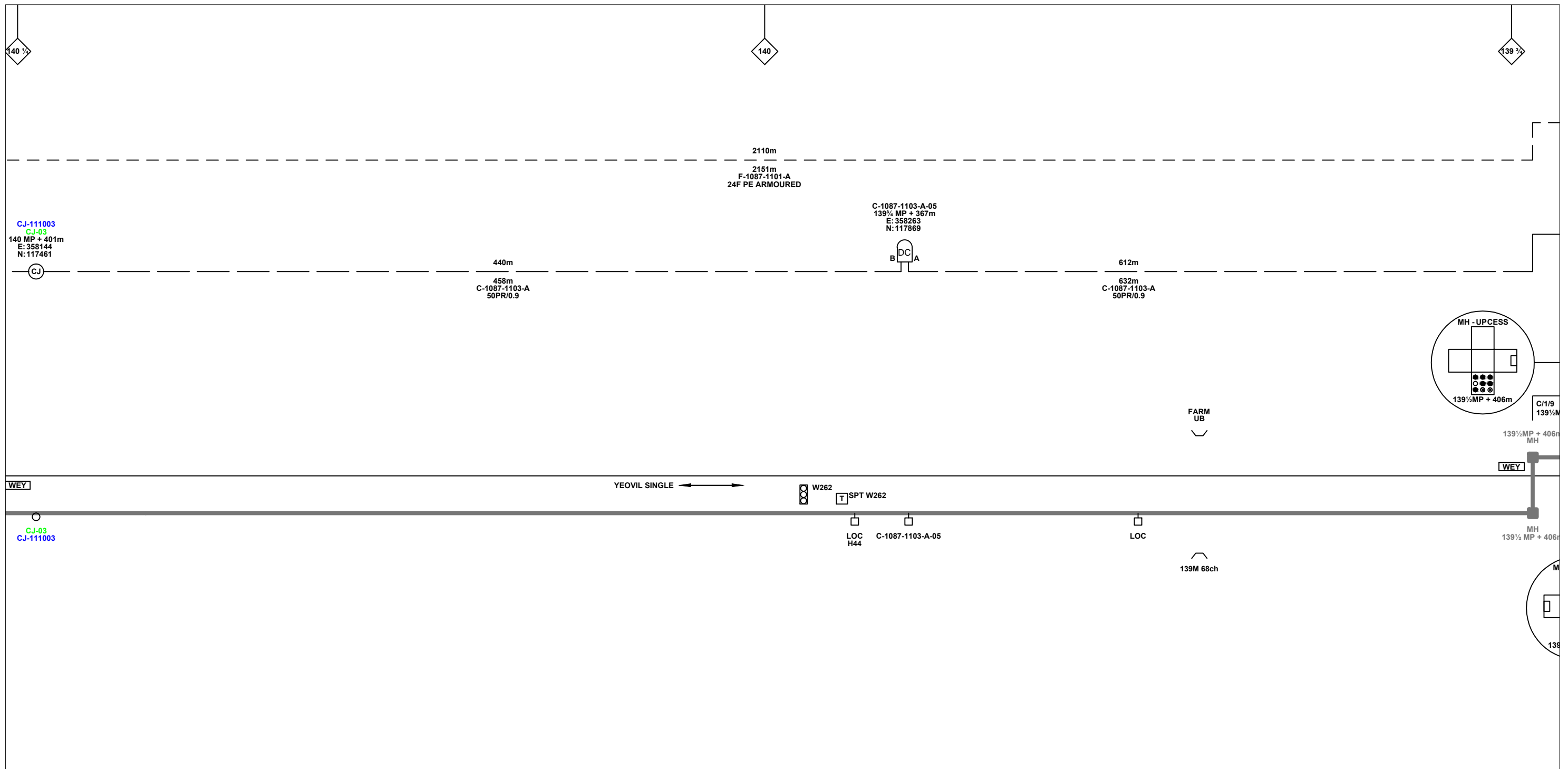
FTN/GSM-R Project
Tournament House
Paddington
London
W2 1HA

Alternative Reference: See Layout Tab 841 x 297 Sheet 3

Drawing Number: NTPO\SLD\1087\1103\001

Sheet: 6 of 9

Revision: B



Legend

Cabinet and Verts	Copper Joint	Trough Duct Cable Tray	Signal Box	FTN Core Node	Screen Joint Routeworks	Overbridge	Signal	Engineer's Line Reference	Crossing	Gas Line
Cabinet with Regenerator and Verts	Fibre Joint	Cable - Type Identified by FTN Code	Electrical Control Room	Core Node with GSM-R Colocated	Copper Joint Routeworks	Underbridge	Vehicle Access Point	Mile Post	HV Cable	LV Cable
KEY	Screening Conductor Joint with/without Earth	Manhole	Mid Length Sheath Gap Fibre	FTN Access Node	Cabinet Routeworks	Tunnel	Pedestrian Access Point	Platform	Sewer	Telecoms
Proposed Fibre & Civils Elements are shown in RED		All Existing Elements are shown in BLACK	Sheath Gap Copper	FTN Access Node with GSM-R Colocated	Fibre Joint Routeworks	Earth Farm	Buffer Stop	Telephone	Water	Mast
Proposed Copper Elements are shown in BLUE		Existing Fibre Cable								
Proposed Screening Elements are shown in MAGENTA		Existing Copper Cable								
All Recoveries are shown in GREEN		Existing Screen Cable								

Notes

Rev	Date	Description of Revisions	Drawn	Chkd	Appr
B	30/07/12	Stage 2 Design- First Issue	SH	JW	CT
A	05/12/08	2nd Issue	MT	PW-B	SW
DA	26/08/08	1st Issue	MT	PW-B	SW

Contractor(s)

Unit 4 Apex Park, Wainwright Road, Worcester, Worcestershire, WR4 9FN. Tel: 01905 756000

Status: **Design**

Scale(s): NTS

ELR & Mileage: WEY, YJP

Designed		Sign.		Date	
Drawn	Stephen Holder	Sign.		Date	30/07/2012
Checked	Joe Winter	Sign.		Date	30/07/2012
Approved	Chris Tappenden	Sign.		Date	30/07/2012
Project	FTN/GSM-R Project Stage 2 Design				
Drawing Title	Yeovil Junction (1087) to Yeovil Pen Mill Station (1103)				

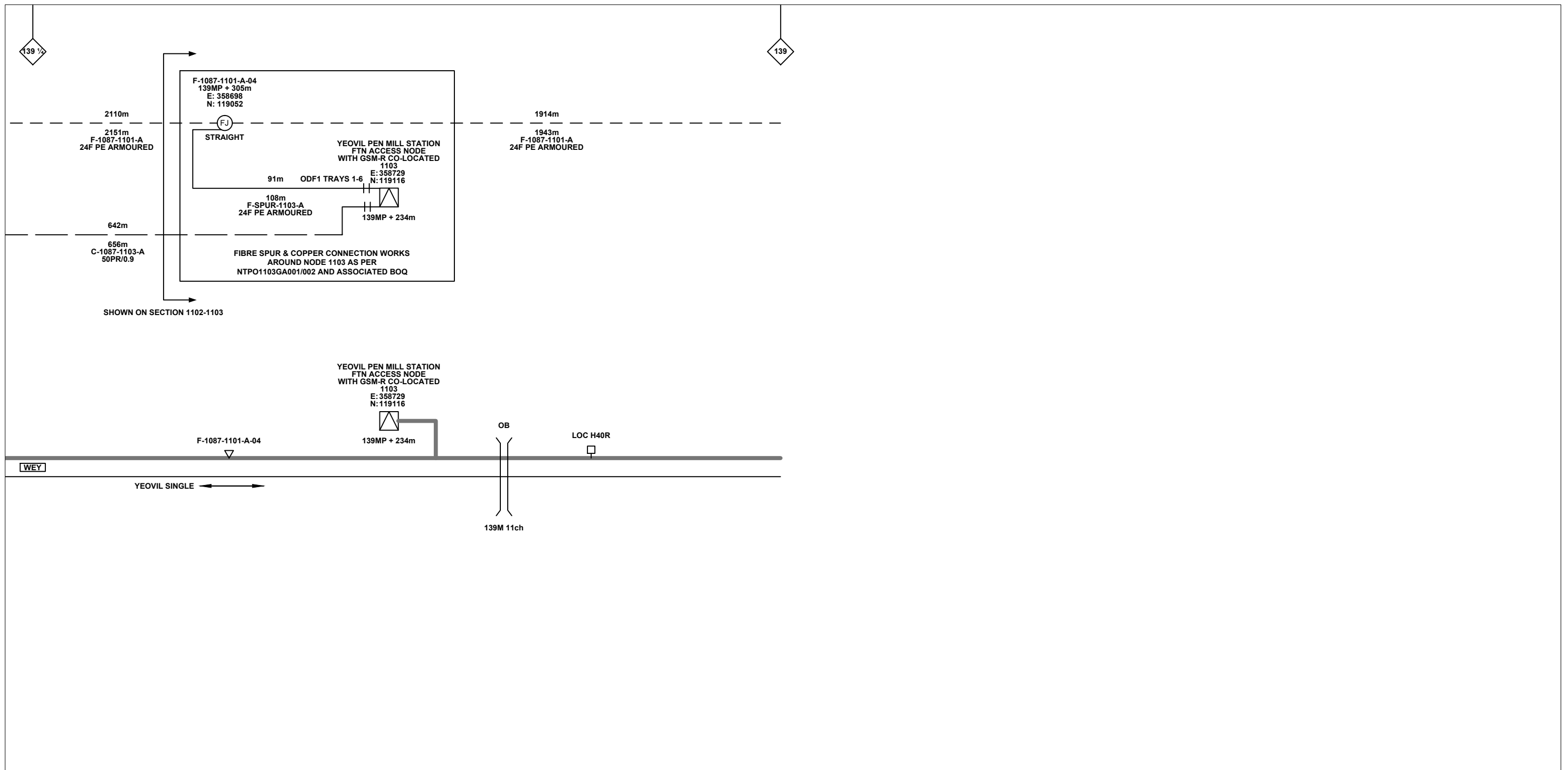
FTN/GSM-R Project
Tournament House
Paddington
London
W2 1HA

Alternative Reference: See Layout Tab 841 x 297 Sheet 4

Drawing Number: NTPO\SLD\1087\1103\001

Sheet: 7 of 9

Revision: B



Legend

Cabinet and Verts	Copper Joint	Trough Duct Cable Tray	Signal Box	FTN Core Node	Screen Joint Routeworks	Overbridge	Signal	Engineer's Line Reference	Crossing	Gas Line
Cabinet with Regenerator and Verts	Fibre Joint	Cable - Type Identified by FTN Code	Electrical Control Room	Core Node with GSM-R Colocated	Copper Joint Routeworks	Manhole	Vehicle Access Point	Mile Post	HV Cable	LV Cable
KEY	Screening Conductor Joint with/without Earth	Status - as per Key Below	Mid Length Sheath Gap Fibre	FTN Access Node	Cabinet Routeworks	Manhole details: Cross-To be used Filled-In use Clear-Empty	Pedestrian Access Point	Platform	Sewer	Telecoms
Proposed Fibre & Civils Elements are shown in RED		All Existing Elements are shown in BLACK	Sheath Gap Copper	FTN Access Node with GSM-R Colocated	Fibre Joint Routeworks	Tunnel	Earth Farm	Buffer Stop	Water	Mast
Proposed Copper Elements are shown in BLUE		--- Existing Fibre Cable								
Proposed Screening Elements are shown in MAGENTA		--- Existing Copper Cable								
All Recoveries are shown in GREEN		--- Existing Screen Cable								

Notes

Rev	Date	Description of Revisions	Drawn	Chkd	Appr
B	30/07/12	Stage 2 Design- First Issue	SH	JW	CT
A	05/12/08	2nd Issue	MT	PW-B	SW
DA	26/08/08	1st Issue	MT	PW-B	SW

Contractor(s)

Unit 4 Apex Park, Wainwright Road, Worcester, Worcestershire, WR4 9FN. Tel: 01905 756000

Status: **Design**

Scale(s): NTS

ELR & Mileage: WEY, YJP

Designed		Sign.		Date	
Drawn	Stephen Holder	Sign.		Date	30/07/2012
Checked	Joe Winter	Sign.		Date	30/07/2012
Approved	Chris Tappenden	Sign.		Date	30/07/2012
Project	FTN/GSM-R Project Stage 2 Design				
Drawing Title	Yeovil Junction (1087) to Yeovil Pen Mill Station (1103)				

FTN/GSM-R Project
Tournament House
Paddington
London
W2 1HA

Alternative Reference: See Layout Tab 841 x 297 Sheet 5

Drawing Number: NTPO\SLD\1087\1103\001

Sheet: 9 of 9

Revision: B