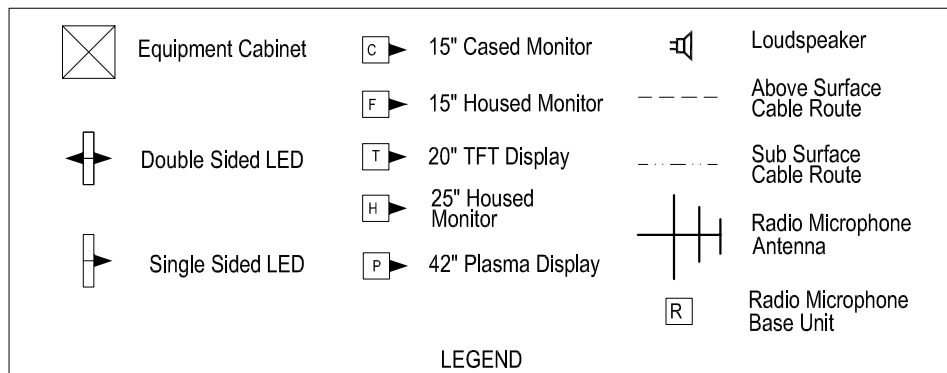


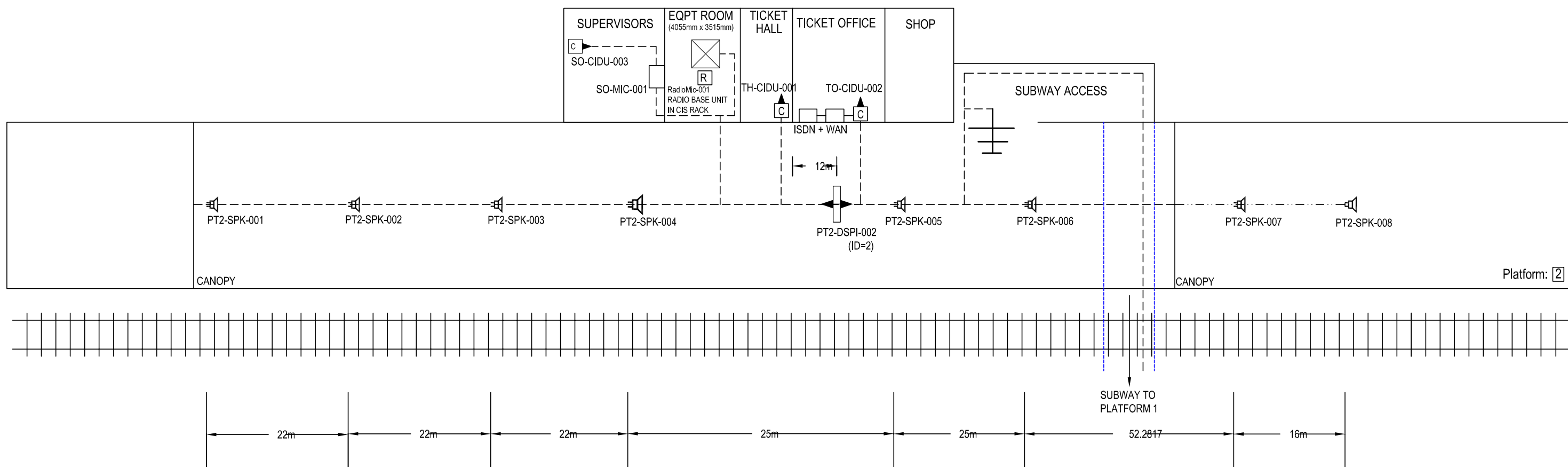
WAN	
CIRCUIT ID	KXIP600362
IP ADDRESS	10.227.65.1

"PLATFORM 1 HP ISDN"
01-264-324906
"PLATFORM 2 HP ISDN"
01-264-324913

All Equipment tags to be prefixed with "ADV-"



Equipment	Dist Board
CIS RACK	MEM CCT 3
OTHERS EXISTING	



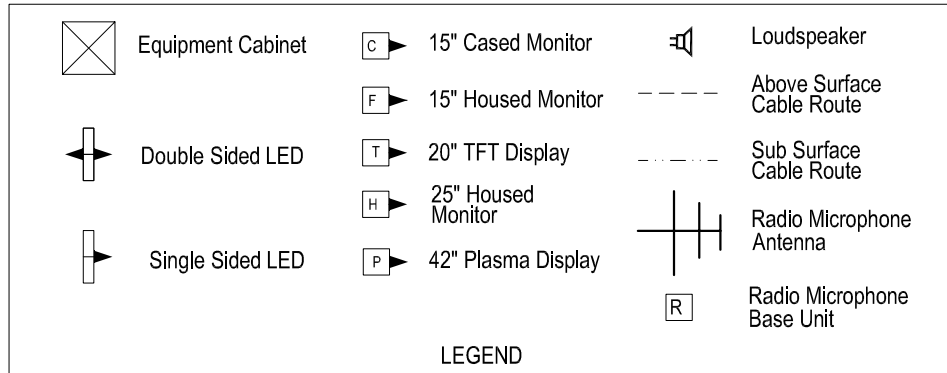
IF IN DOUBT ASK!

MATERIAL	CONSTRUCTION	DRAWN BY	D GADDU	SIGNATURE		<p>AMEY DATEL Project Offices 1st Floor, Platform 2/3 Eastleigh Station Southampton Road Eastleigh Hants SO50 9FL</p>	SITE/PROJECT		SOUTH WEST TRAINS CIS PROJECT	
		CHECKED BY	T WONG				TITLE		ANDOVER AS BUILT	
		APPD BY	A SMITH				SCALE	DRG No.	ISSUE	SHEET
		APPD BY					NTS	SM803-75510	B	1 of 2
FINISH		CAD Ref:		CONTRACTOR'S Ref:		COPYRIGHT © AMEY Rail All rights reserved. Neither this drawing or any of the information it contains may be copied or communicated to third parties without the written permission of the copyright holder.				

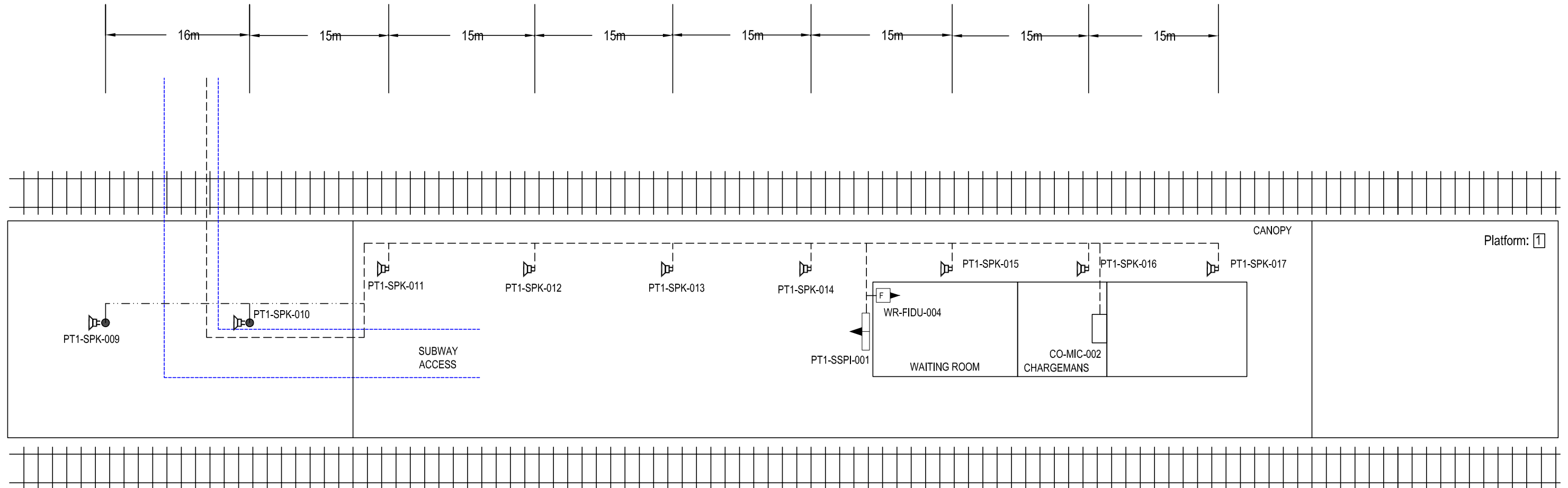
WAN	
CIRCUIT ID	KXIP600362
IP ADDRESS	10.227.65.1

"PLATFORM 1 HP ISDN"
01-264-324906
"PLATFORM 2 HP ISDN"
01-264-324913

All Equipment tags to be prefixed with "ADV-"



Equipment	Dist Board
CIS RACK	MEM CCT 3
OTHERS EXISTING	



IF IN DOUBT ASK!

MATERIAL	CONSTRUCTION	DRAWN BY	D GADDU	SIGNATURE		<p>AMEY DATEL Project Offices 1st Floor, Platform 2/3 Eastleigh Station Southampton Road Eastleigh Hants SO50 9FL</p>	SITE/PROJECT		SOUTH WEST TRAINS CIS PROJECT	
		CHECKED BY	T WONG				TITLE		ANDOVER AS BUILT	
		APPD BY	A SMITH				SCALE	DRG No.	ISSUE	SHEET
		APPD BY					NTS	SM803-75510	B	2 of 2
FINISH		CAD Ref:		CONTRACTOR'S Ref:		<p>COPYRIGHT © AMEY Rail All rights reserved. Neither this drawing or any of the information it contains may be copied or communicated to third parties without the written permission of the copyright holder</p>				