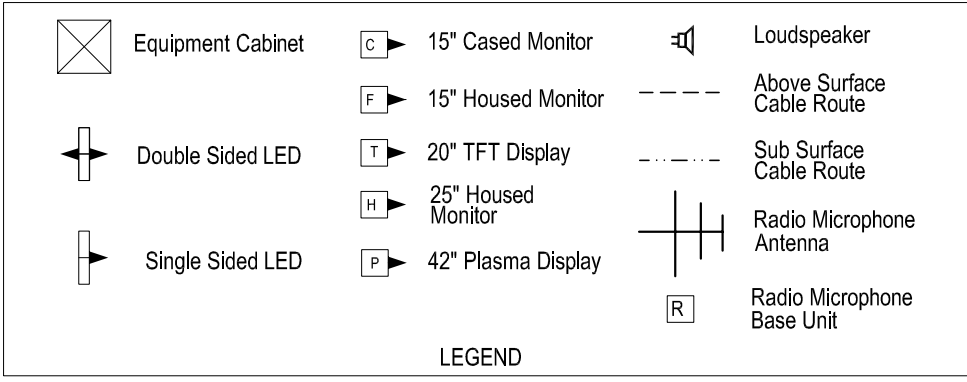


DRG No. SM803-75876

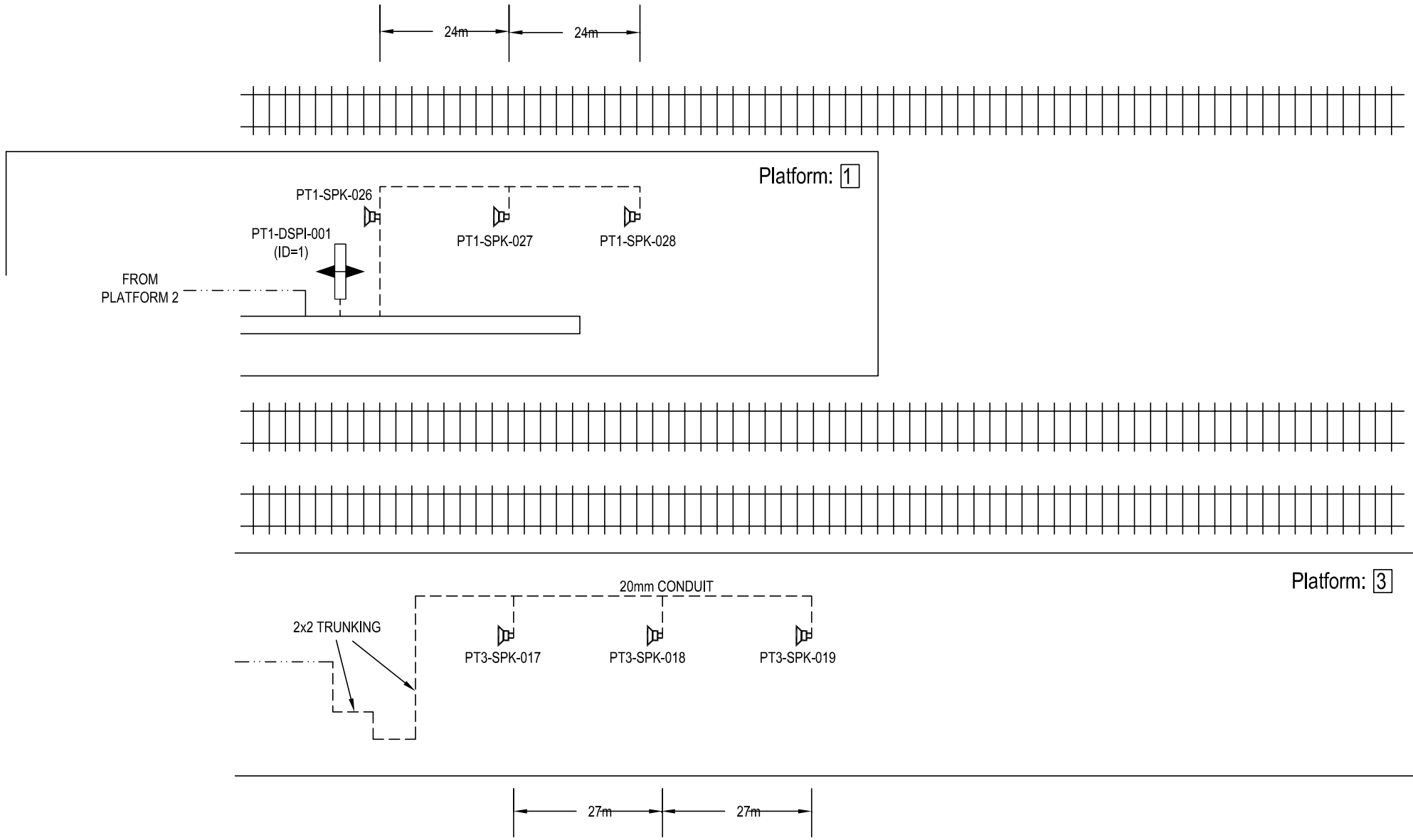
| | |
|------------|-------------|
| WAN | |
| CIRCUIT ID | MXIP201538 |
| IP ADDRESS | 10.227.69.1 |

| |
|----------------------|
| "PLATFORM 2 HP ISDN" |
| 01-202-291797 |
| "PLATFORM 3 HP ISDN" |
| 01-202-291929 |


All Equipment tags to be prefixed with "BMH-"



| Equipment | Dist Board | |
|--------------------------------|---------------|-----|
| CIS RACK | COMMS ROOM DB | 13A |
| ALL OTHERS EXISTING SPURS USED | | |



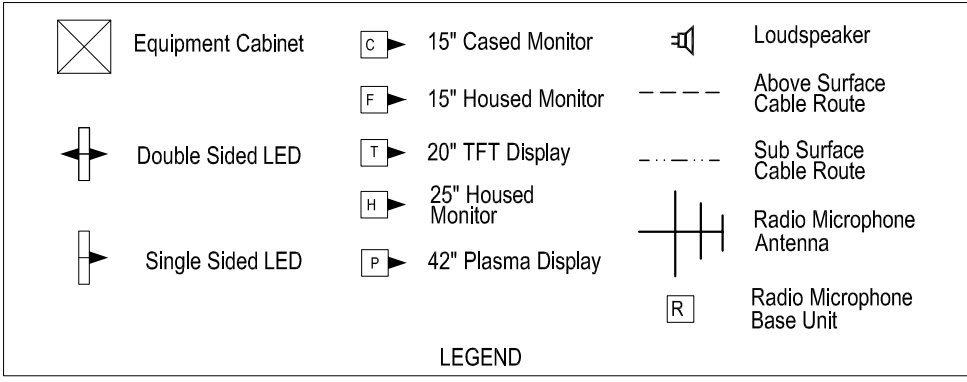
IF IN DOUBT ASK!

| | | | | | | | | | | |
|----------|--------------|-------------------|----------|-----------|------------|--|--------------|-------------|-------------------------------|--------|
| MATERIAL | CONSTRUCTION | DRAWN BY | A HATTON | SIGNATURE | |  AMEY DATEL Project Offices 1st Floor, Platform 2/3 Eastleigh Station Southampton Road Eastleigh Hants SO50 9FL | SITE/PROJECT | | SOUTH WEST TRAINS CIS PROJECT | |
| | | CHECKED BY | T WONG | DATE | 10-07-2002 | | TITLE | | BOURNEMOUTH AS BUILT | |
| FINISH | | APPD BY | A SMITH | | | COPYRIGHT © AMEY Rail All rights reserved. Neither this drawing or any of the information it contains may be copied or communicated to third parties without the written permission of the copyright holder | SCALE | DRG No. | ISSUE | SHEET |
| | | CAD Ref: | | | | | NTS | SM803-75876 | B | 1 of 3 |
| | | CONTRACTOR'S Ref: | | | | | | | | |

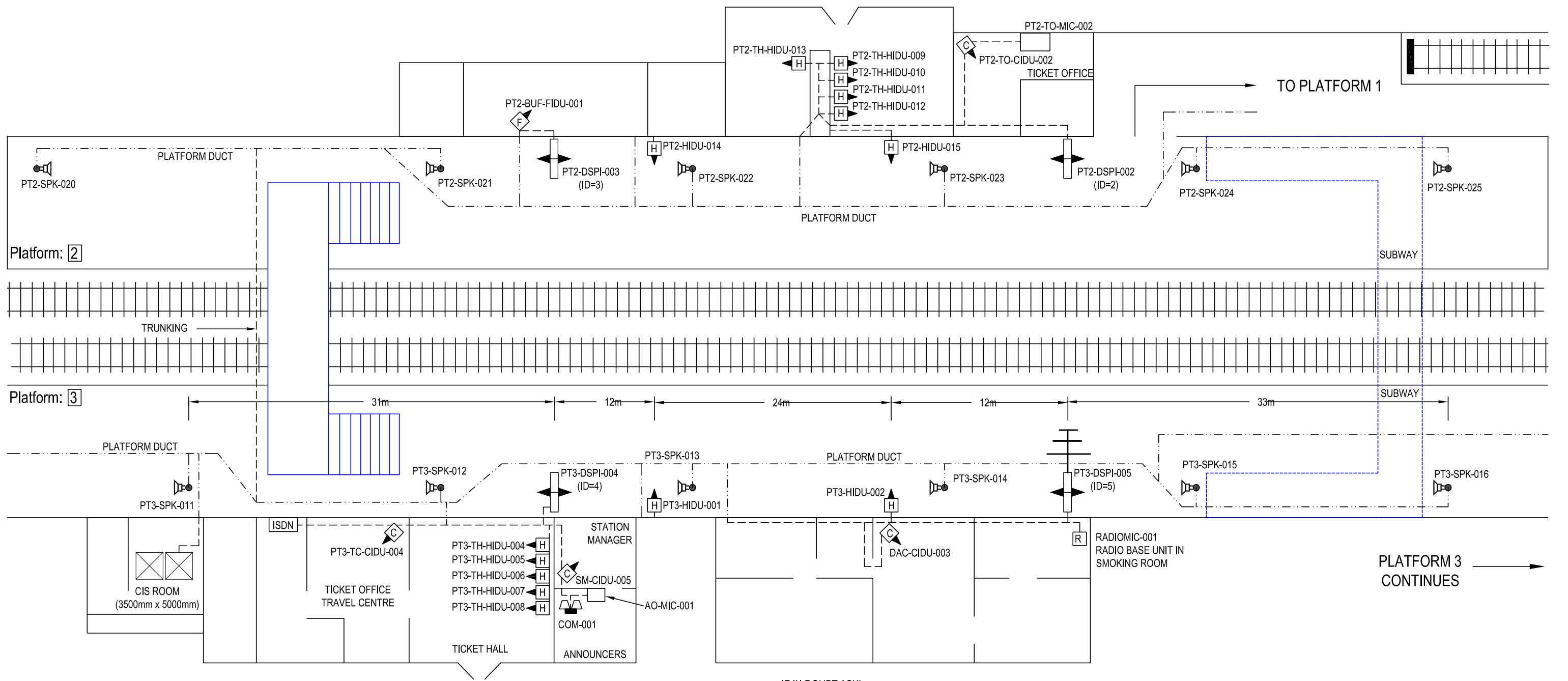
| | |
|------------|-------------|
| WAN | |
| CIRCUIT ID | MXIP201538 |
| IP ADDRESS | 10.227.69.1 |

| |
|----------------------|
| "PLATFORM 2 HP ISDN" |
| 01-202-291797 |
| "PLATFORM 3 HP ISDN" |
| 01-202-291929 |

All Equipment tags to be prefixed with "BMH-"



| Equipment | Dist Board | |
|--------------------------------|---------------|-----|
| CIS RACK | COMMS ROOM DB | 13A |
| ALL OTHERS EXISTING SPURS USED | | |



IF IN DOUBT ASK!

| | | | | | | | | | |
|----------|--------------|--------------------|-----------|------------|--|-------------------------------|-------------|-------|--------|
| MATERIAL | CONSTRUCTION | NAME | SIGNATURE | DATE | <p>AMEY DATEL Project Offices 1st Floor, Platform 2/3 Eastleigh Station Southampton Road Eastleigh Hants SO50 9FL</p> | SITE/PROJECT | | | |
| | | DRAWN BY: A HATTON | | 10-07-2002 | | SOUTH WEST TRAINS CIS PROJECT | | | |
| FINISH | | CHECKED BY: T WONG | | | <p>AMEY DATEL Project Offices 1st Floor, Platform 2/3 Eastleigh Station Southampton Road Eastleigh Hants SO50 9FL</p> | TITLE | | | |
| | | APPD BY: A SMITH | | | | BOURNEMOUTH AS BUILT | | | |
| | | CAD Ref: | | | <p>COPYRIGHT © AMEY Rail All rights reserved. Neither this drawing or any of the information it contains may be copied or communicated to third parties without the written permission of the copyright holder</p> | SCALE | DRG No. | ISSUE | SHEET |
| | | CONTRACTOR'S Ref: | | | | NTS | SM803-75876 | B | 2 of 3 |

| | |
|------------|-------------|
| WAN | |
| CIRCUIT ID | MXIP201538 |
| IP ADDRESS | 10.227.69.1 |

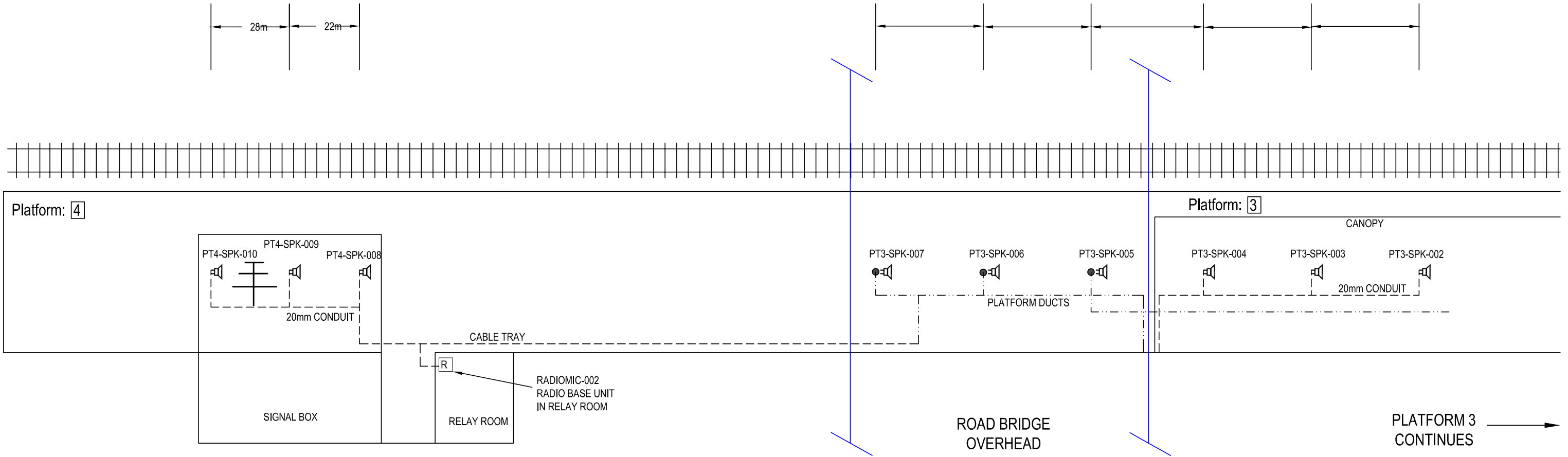
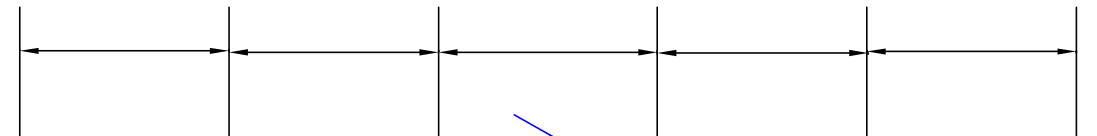
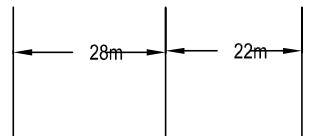
| |
|----------------------|
| "PLATFORM 2 HP ISDN" |
| 01-202-291797 |
| "PLATFORM 3 HP ISDN" |
| 01-202-291929 |

All Equipment tags to be prefixed with "BMH-"

| | | | | | |
|--|-------------------|--|--------------------|--|----------------------------|
| | Equipment Cabinet | | 15" Cased Monitor | | Loudspeaker |
| | Double Sided LED | | 15" Housed Monitor | | Above Surface Cable Route |
| | Single Sided LED | | 20" TFT Display | | Sub Surface Cable Route |
| | | | 25" Housed Monitor | | Radio Microphone Antenna |
| | | | 42" Plasma Display | | Radio Microphone Base Unit |

LEGEND

| Equipment | Dist Board | |
|--------------------------------|---------------|-----|
| CIS RACK | COMMS ROOM DB | 13A |
| ALL OTHERS EXISTING SPURS USED | | |



IF IN DOUBT ASK!

| | | | | | | | | | | |
|----------|--------------|-------------------|----------|-----------|------------|---|--------------|-------------|-------------------------------|--------|
| MATERIAL | CONSTRUCTION | DRAWN BY | A HATTON | SIGNATURE | | <p>AMEY DATEL Project Offices 1st Floor, Platform 2/3 Eastleigh Station Southampton Road Eastleigh Hants SO50 9FL</p> | SITE/PROJECT | | SOUTH WEST TRAINS CIS PROJECT | |
| | | CHECKED BY | T WONG | DATE | 10-07-2002 | | TITLE | | BOURNEMOUTH AS BUILT | |
| FINISH | CONSTRUCTION | APPD BY | A SMITH | | | <p>COPYRIGHT © AMEY Rail All rights reserved. Neither this drawing or any of the information it contains may be copied or communicated to third parties without the written permission of the copyright holder</p> | SCALE | DRG No. | ISSUE | SHEET |
| | | CAD Ref: | | | | | NTS | SM803-75876 | B | 3 of 3 |
| | | CONTRACTOR'S Ref: | | | | | | | | |