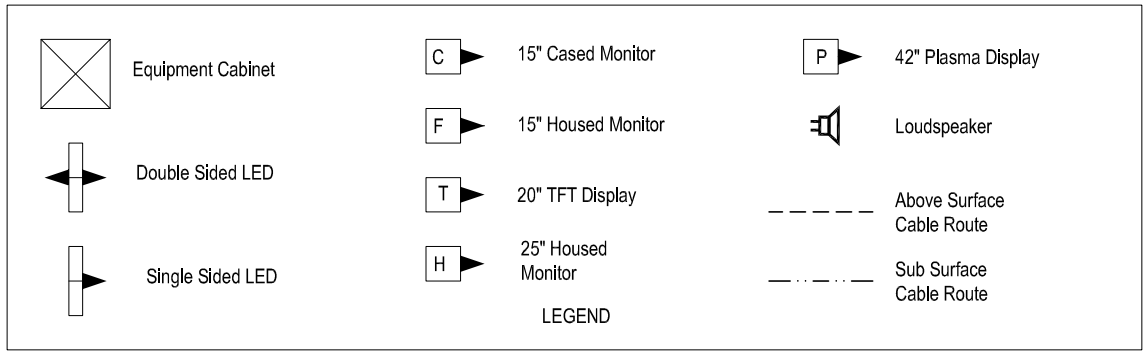


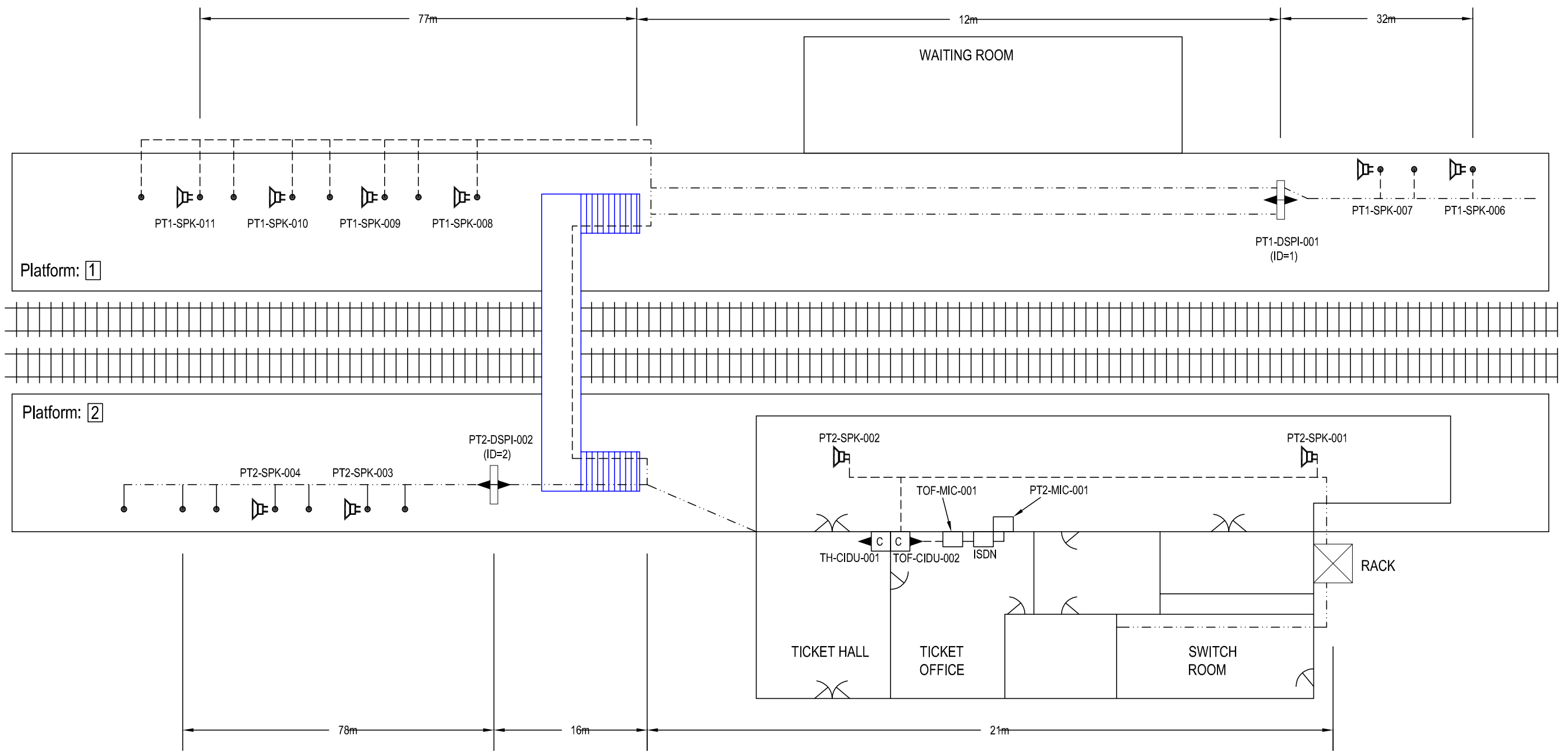
WAN	
CIRCUIT ID	KXIP600401
IP ADDRESS	10.227.124.1

"PLATFORM 1 HP ISDN"
01-344-874831
"PLATFORM 2 HP ISDN"
01-344-874832

All Equipment tags to be prefixed with "SNG-"



Equipment	Dist Board	
PLATFORM 1 MEMSHIELD BOARD SUPPLIED FROM GP 31 WAY CRABTREE ON C40A BREAKER 6		
PT2-DSPI-001	GP 31WAY CCT3	C16A
PT1-DSPI-002	GP 7WAY CCT1	B10A
CIS RACK	6WAY POLESTAR CCT3	C20A
TH-CIDU-001	GP 18WAY CCT7	C16A
TOF-CIDU-002	GP 18WAY CCT7	C16A



IF IN DOUBT ASK!

Date of Last Modification: 25 April 2003	CONSTRUCTION	DRAWN BY	J STEVENS	SIGNATURE		AMEY DATEL Project Offices 1st Floor, Platform 2/3 Eastleigh Station Southampton Road Eastleigh Hants SO50 9FL	SITE/PROJECT		SOUTH WEST TRAINS CIS PROJECT	
		CHECKED BY	T WONG	DATE	25-04-2003		TITLE		SUNNINGDALE AS BUILT	
This Drawing Supersedes Any Previous Drawings	FINISH	APPD BY	A SMITH			COPYRIGHT © AMEY Rail All rights reserved. Neither this drawing or any of the information it contains may be copied or communicated to third parties without the written permission of the copyright holder	SCALE	DRG No.	ISSUE	SHEET
		CAD Ref:					NTS	SM803-75671	C	1 of 1
		CONTRACTOR'S Ref:								