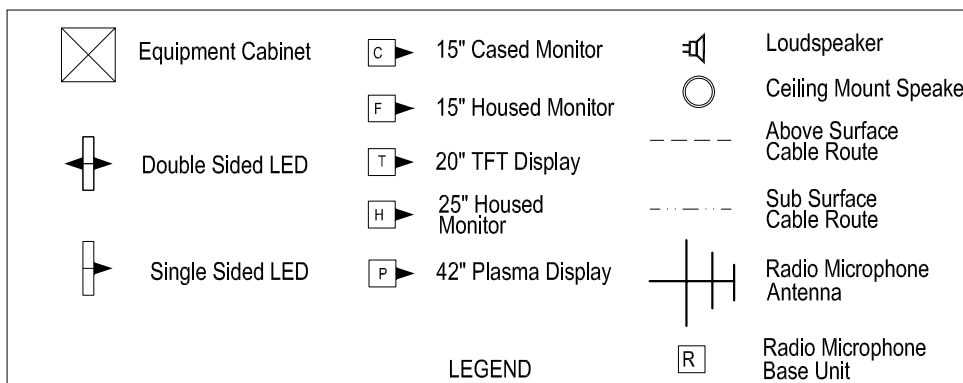


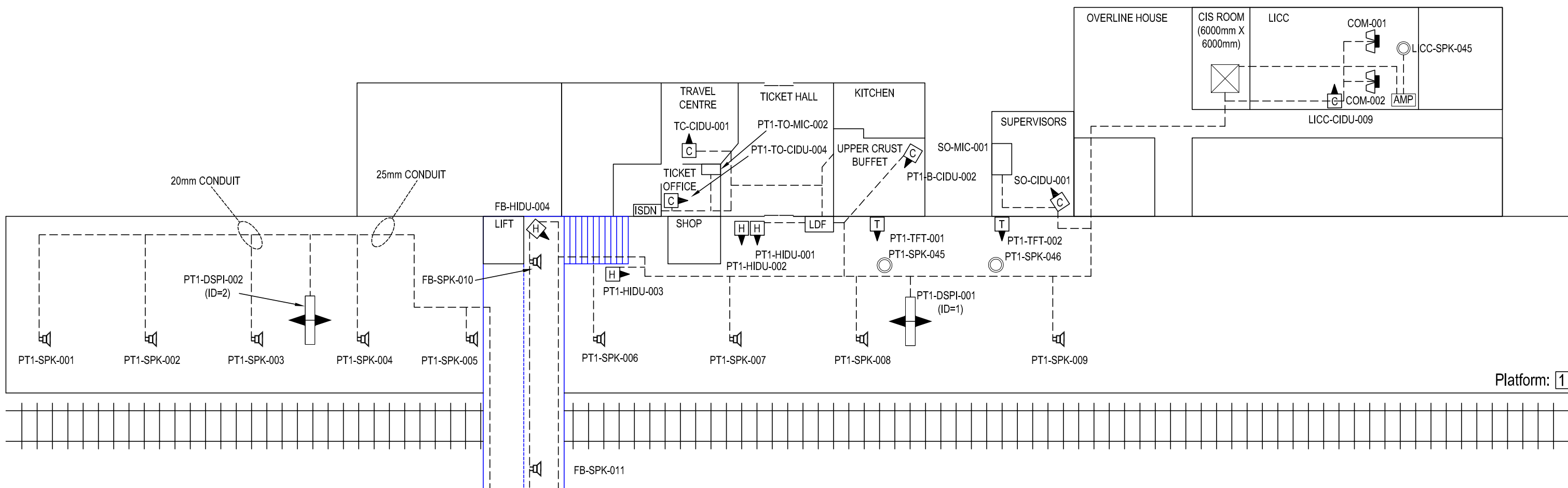
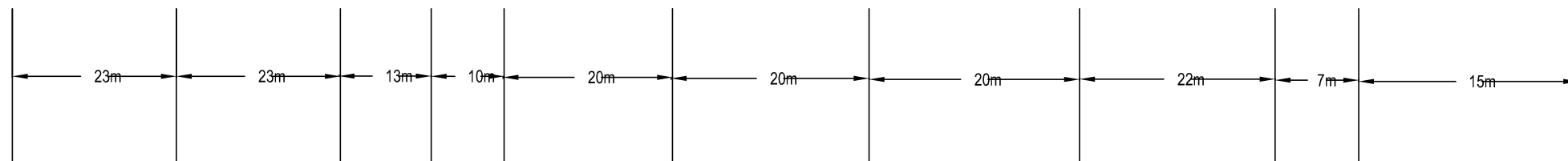
"PLATFORM 1A HP ISDN"
02380-238116
"PLATFORM 1B/2 HP ISDN"
02380-238117
"PLATFORM 3 HP ISDN"
02380-233833

WAN	
CIRCUIT ID	MXIP201561
IP ADDRESS	10.227.201.1

All Equipment tags to be prefixed with "SOU-"




Equipment	Dist Board	
EXISTING USED		



Platform: 1

IF IN DOUBT ASK!

Date of Last Modification: 19 August 2005	CONSTRUCTION	NAME	SIGNATURE	DATE	 AMEY DATEL Project Offices 1st Floor, Platform 2/3 Eastleigh Station Southampton Road Eastleigh Hants SO50 9FL	SITE/PROJECT			
		DRAWN BY: J SUMNER		19-08-2005		SOUTH WEST TRAINS CIS PROJECT			
DRAWING UP ISSUED - Additional equipment added as part of small works order		CHECKED BY: T WONG			TITLE SOUTHAMPTON CENTRAL AS BUILT	TITLE			
		APPD BY: V WILLIAMSON				SOUTHAMPTON CENTRAL AS BUILT			
		CAD Ref:			COPYRIGHT © AMEY Rail All rights reserved. Neither this drawing or any of the information it contains may be copied or communicated to third parties without the written permission of the copyright holder	SCALE	DRG No.	ISSUE	SHEET
		CONTRACTOR'S Ref:				NTS	SM803-75932	E	1 of 3

DRG No. SM803-75932

"PLATFORM 1A HP ISDN"
02380-238116
"PLATFORM 1B/2 HP ISDN"
02380-238117
"PLATFORM 3 HP ISDN"
02380-233833

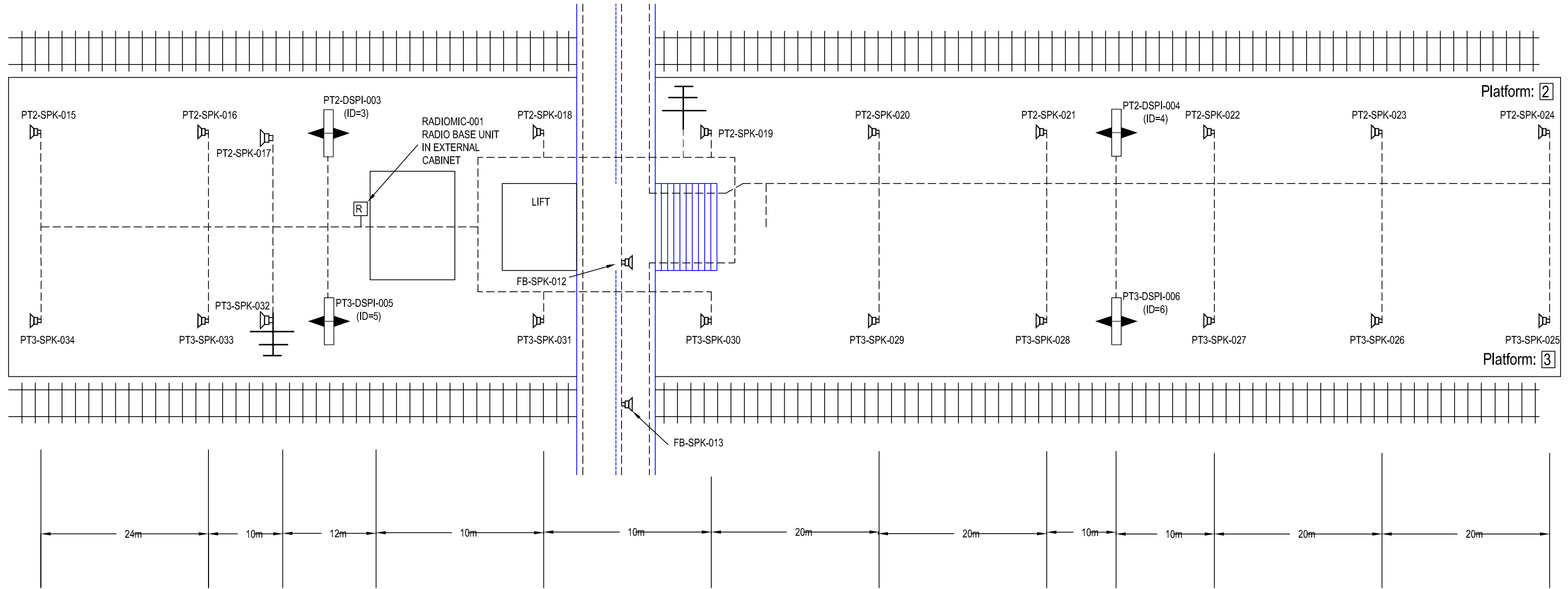
WAN	
CIRCUIT ID	MXIP201561
IP ADDRESS	10.227.201.1

All Equipment tags to be prefixed with "SOU-"

LEGEND

	Equipment Cabinet		15" Cased Monitor		Loudspeaker
	Double Sided LED		15" Housed Monitor		Ceiling Mount Speaker
	Single Sided LED		20" TFT Display		Above Surface Cable Route
			25" Housed Monitor		Sub Surface Cable Route
			42" Plasma Display		Radio Microphone Antenna
					Radio Microphone Base Unit

Equipment	Dist Board	
EXISTING SPURS		



IF IN DOUBT ASK!

Date of Last Modification: 19 August 2005
 DRAWING UP ISSUED - Additional equipment added as part of small works order

CONSTRUCTION	NAME	SIGNATURE	DATE
DRAWN BY	J SUMNER		19-08-2005
CHECKED BY	T WONG		
APPD BY	V WILLIAMSON		
APPD BY			

AMEY DATEL Project
 Offices
 1st Floor, Platform
 2/3
 Eastleigh Station
 Southampton Road
 Eastleigh
 Hants
 SO50 9FL

SITE/PROJECT	SOUTH WEST TRAINS CIS PROJECT		
TITLE	SOUTHAMPTON CENTRAL AS BUILT		

CAD Ref:
 CONTRACTOR'S Ref:

CAD Ref:	
CONTRACTOR'S Ref:	

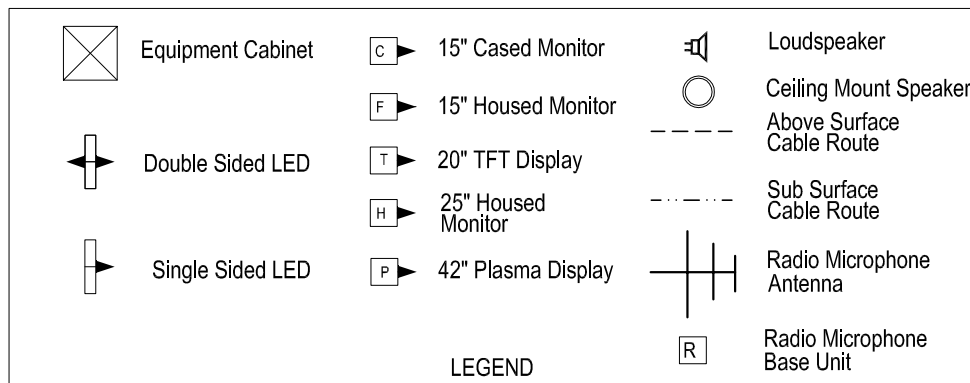
COPYRIGHT © AMEY Rail
 All rights reserved. Neither this drawing or any of the information it contains may be copied or communicated to third parties without the written permission of the copyright holder

SCALE	DRG No.	ISSUE	SHEET
NTS	SM803-75932	D	2 of 3

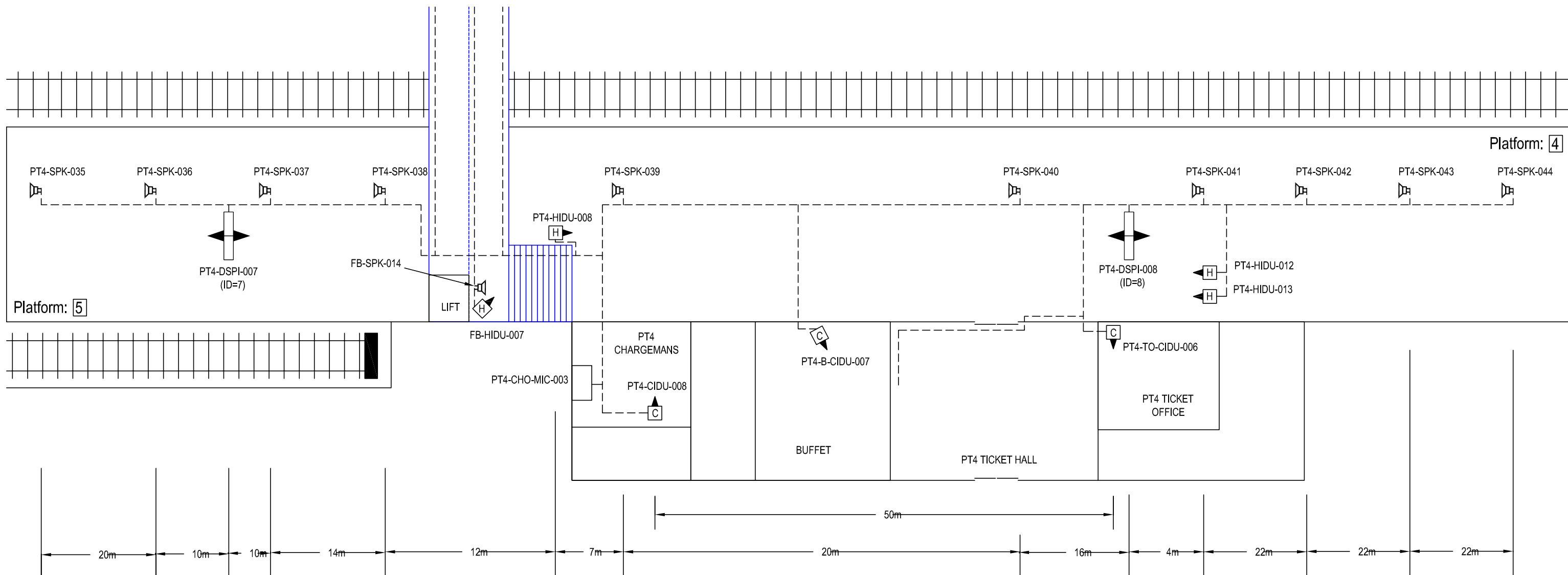
WAN	
CIRCUIT ID	MXIP201561
IP ADDRESS	10.227.201.1

All Equipment tags to be prefixed with "SOU-"

"PLATFORM 1 HP ISDN"	02380-238116
"PLATFORM 2 HP ISDN"	02380-238117
"PLATFORM 4 HP ISDN"	02380-233833



Equipment	Dist Board	
EXISTING SPURS		



IF IN DOUBT ASK!

Date of Last Modification: 19 August 2005

DRAWING UP ISSUED - Additional equipment added as part of small works order

CONSTRUCTION

	NAME	SIGNATURE	DATE
DRAWN BY	J SUMNER		19-08-2005
CHECKED BY	T WONG		
APPD BY	V WILLIAMSON		
APPD BY			
CAD Ref:			
CONTRACTOR'S Ref:			



AMEY DATEL Project
 Offices
 1st Floor, Platform
 2/3
 Eastleigh Station
 Southampton Road
 Eastleigh
 Hants
 SO50 9FL

SITE/PROJECT

SOUTH WEST TRAINS CIS PROJECT

TITLE

SOUTHAMPTON CENTRAL
 AS BUILT

SCALE

NTS

DRG No.

SM803-75932

ISSUE

D

SHEET

3 of 3