

WAN	
CIRCUIT ID	KXIP600417
IP ADDRESS	10.227.125.1

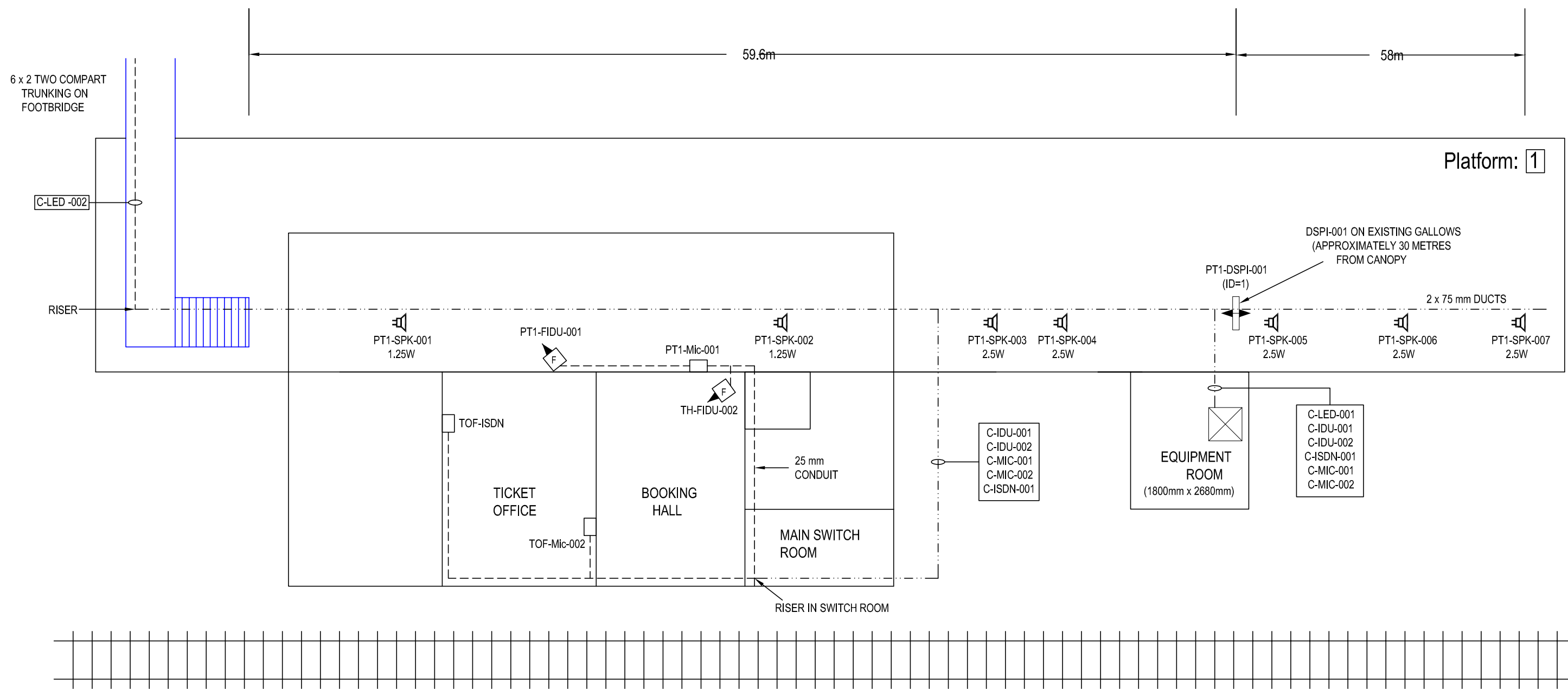
All Equipment tags to be prefixed with "VIR-"

"PLATFORM 1 HP ISDN"
01-344-843202
"PLATFORM 2 HP ISDN"
01-344-843331
"PLATFORM 2 HP ISDN"
01-344-841052

LEGEND

	Equipment Cabinet		15" Cased Monitor		42" Plasma Display
	Double Sided LED		15" Housed Monitor		Loudspeaker
	Single Sided LED		20" TFT Display		Above Surface Cable Route
			25" Housed Monitor		Sub Surface Cable Route

Equipment	Dist Board	
TH-FIDU-002	GP2 C'TREE CCT9	10A
PT1-FIDU-001	GP3 C'TREE CCT1	20A
PT1-DSPI-001	GP1 C'TREE CCT5	10A
CIS RACK	9WAY P'STAR CCT3	32A



IF IN DOUBT ASK!

MATERIAL	CONSTRUCTION	NAME	SIGNATURE	DATE	<p>AMEY DATEL Project Offices 1st Floor, Platform 2/3 Eastleigh Station Southampton Road Eastleigh Hants SO50 9FL</p>	SITE/PROJECT		
		DRAWN BY		27-05-2002		SOUTH WEST TRAINS CIS PROJECT		
FINISH		CHECKED BY			<p>COPYRIGHT © AMEY Rail All rights reserved. Neither this drawing or any of the information it contains may be copied or communicated to third parties without the written permission of the copyright holder</p>	TITLE		
		APPD BY				VIRGINIA WATER AS BUILT		
		CAD Ref:			SCALE	DRG No.	ISSUE	SHEET
		CONTRACTOR'S Ref:			NTS	SM803-75676	B	1 of 3

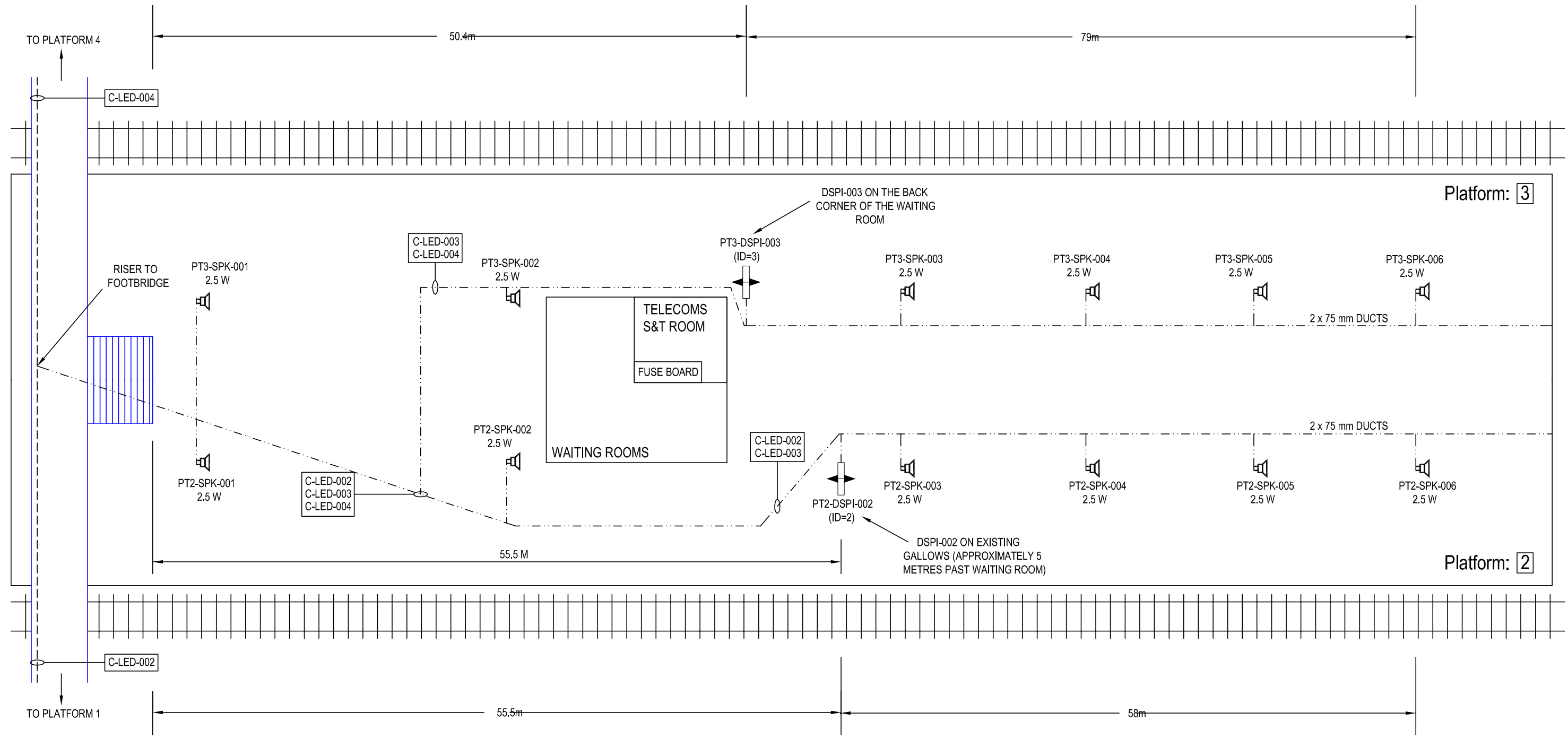
WAN	
CIRCUIT ID	KXIP600417
IP ADDRESS	10.227.125.1

All Equipment tags to be prefixed with "VIR-"

"PLATFORM 1 HP ISDN"
01-344-843202
"PLATFORM 2 HP ISDN"
01-344-843331
"PLATFORM 2 HP ISDN"
01-344-841052

	Equipment Cabinet		15" Cased Monitor		42" Plasma Display
	Double Sided LED		15" Housed Monitor		Loudspeaker
	Single Sided LED		20" TFT Display		Above Surface Cable Route
			25" Housed Monitor		Sub Surface Cable Route
LEGEND					

Equipment	Dist Board	
PT2-DSPI-002	PT3 GP1 6WAY C'TREE CCT5	30A
PT3-DSPI-003	PT3 GP1 6WAY C'TREE CCT5	30A



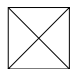





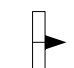

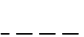


MATERIAL	CONSTRUCTION	DRAWN BY	D GADDU	SIGNATURE		AMEY DATEL Project Offices 1st Floor, Platform 2/3 Eastleigh Station Southampton Road Eastleigh Hants SO50 9FL	SITE/PROJECT		SOUTH WEST TRAINS CIS PROJECT	
		CHECKED BY	T WONG	DATE	27-05-2002		TITLE	VIRGINIA WATER AS BUILT		
FINISH		APPD BY	A SMITH				SCALE	DRG No.	ISSUE	SHEET
		CAD Ref:					NTS	SM803-75676	B	2 of 3
		CONTRACTOR'S Ref:								

COPYRIGHT © AMEY Rail
All rights reserved. Neither this drawing or any of the information it contains may be copied or communicated to third parties without the written permission of the copyright holder

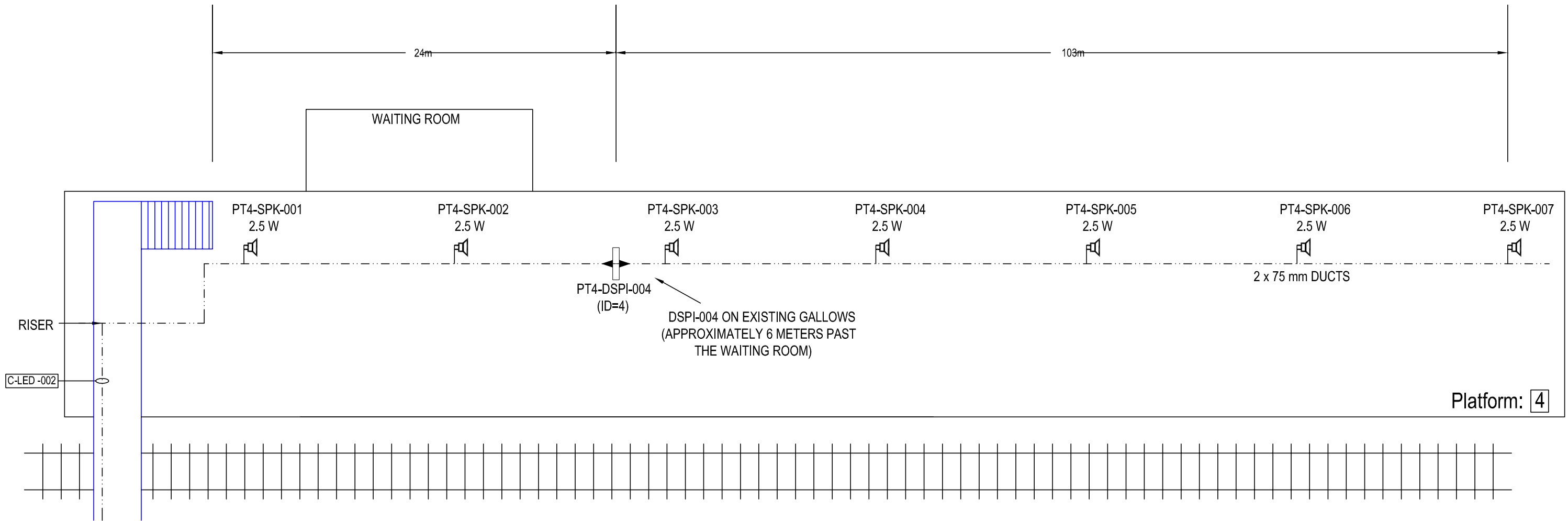
WAN	
CIRCUIT ID	KXIP600417
IP ADDRESS	10.227.125.1

All Equipment tags to be prefixed with "VIR-"


"PLATFORM 1 HP ISDN"
01-344-843202
"PLATFORM 2 HP ISDN"
01-344-843331
"PLATFORM 2 HP ISDN"
01-344-841052

 Equipment Cabinet	 15" Cased Monitor	 42" Plasma Display
 Double Sided LED	 15" Housed Monitor	 Loudspeaker
 Single Sided LED	 20" TFT Display	 Above Surface Cable Route
	 25" Housed Monitor	 Sub Surface Cable Route
	LEGEND	

Equipment	Dist Board	
PT4-DSPI-004	MAIN DIST BOARD PT1 CCT16	5A



IF IN DOUBT ASK!

MATERIAL	CONSTRUCTION	DRAWN BY	D GADDU	SIGNATURE		 AMEY DATEL Project Offices 1st Floor, Platform 2/3 Eastleigh Station Southampton Road Eastleigh Hants SO50 9FL	SITE/PROJECT		SOUTH WEST TRAINS CIS PROJECT	
		CHECKED BY	T WONG	DATE	27-05-2002		TITLE		VIRGINIA WATER AS BUILT	
FINISH		APPD BY	A SMITH			COPYRIGHT © AMEY Rail All rights reserved. Neither this drawing or any of the information it contains may copied or communicated to third parties without the written permission of the copyright holder	SCALE	DRG No.	ISSUE	SHEET
		CAD Ref:					NTS	SM803-75676	B	3 of 3
		CONTRACTOR'S Ref:								